

SUMMIT AT POWDER MOUNTAIN PHASE 1D

LOCATED IN THE NORTH HALF OF SECTION 8, T 7N, R 2E, S16M,
WEBER COUNTY, UTAH.

BASIS OF BEARINGS PER WEBER COUNTY
N 84°55'51" W 1381.07'

NORTHWEST CORNER SECTION 6, TOWNSHIP 7 NORTH, RANGE 2 EAST SALT LAKE BASE AND MERIDIAN FOUND 1944 GLO BRASS CAP (CLOSING CORNER 17.68' SOUTH)

EAST QUARTER CORNER SECTION 6, TOWNSHIP 7 NORTH, RANGE 2 EAST SALT LAKE BASE AND MERIDIAN FOUND 1941 GLO BRASS CAP

SOUTH QUARTER CORNER SECTION 5, TOWNSHIP 7 NORTH, RANGE 2 EAST SALT LAKE BASE AND MERIDIAN FOUND 1944 GLO BRASS CAP

SOUTHEAST CORNER SECTION 6, TOWNSHIP 7 NORTH, RANGE 2 EAST SALT LAKE BASE AND MERIDIAN (CALCULATED)

SOUTH 01°09'02" WEST 2468.72'

SOUTH 87°16'21" WEST 2721.32'

NORTH 87°49'19" WEST 1394.94' (TIE)

NORTH 87°49'19" WEST 2719.88'

NORTH 87°16'21" WEST 2721.32'

SOUTHWEST CORNER SECTION 6, TOWNSHIP 7 NORTH, RANGE 2 EAST SALT LAKE BASE AND MERIDIAN FOUND 1944 GLO BRASS CAP

SOUTHWEST CORNER SECTION 5, TOWNSHIP 7 NORTH, RANGE 2 EAST SALT LAKE BASE AND MERIDIAN (CALCULATED)

SOUTHWEST CORNER SECTION 6, TOWNSHIP 7 NORTH, RANGE 2 EAST SALT LAKE BASE AND MERIDIAN (CALCULATED)

SOUTH 688.70' (TIE)

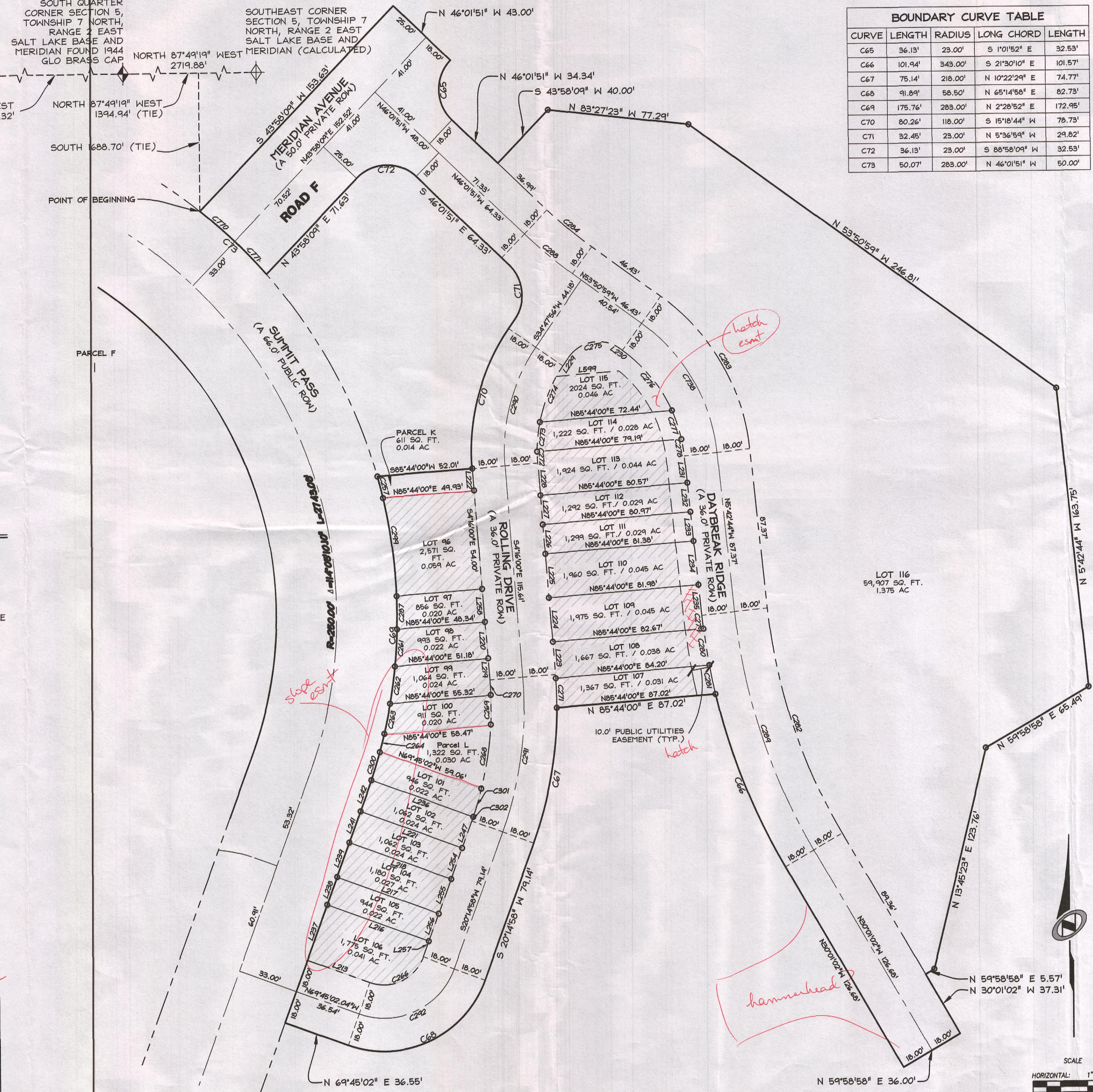
POINT OF BEGINNING

LEGEND

- BOUNDARY LINE
- LOT LINE
- - - SECTION LINE
- - - QUARTER SECTION LINE
- - - COUNTY LINE
- - - ADJOINER DEED LINES
- - - AREA TIE LINES
- ◆ CALCULATED SECTION CORNER AS NOTED
- ◆ SECTION CORNER AS NOTED
- SET 5/8" X 2' REBAR WITH PLASTIC CAP
- ▨ BUILDABLE AREA
- ▧ EASEMENT

SUMMIT AT POWDER MOUNTAIN PHASE 1D
LOTS 57-62, 87-116 AND PARCEL J

LOCATED IN SECTION 8 OF TOWNSHIP 7 NORTH, RANGE 2 EAST, SALT LAKE BASE AND MERIDIAN, WEBER COUNTY, UTAH



BOUNDARY CURVE TABLE

CURVE	LENGTH	RADIUS	LONG CHORD	LENGTH
C65	36.13'	23.00'	S 1°01'52" E	32.53'
C66	101.94'	343.00'	S 21°30'10" E	101.57'
C67	75.14'	218.00'	N 10°22'29" E	74.77'
C68	91.84'	58.50'	N 65°14'58" E	82.73'
C69	175.76'	283.00'	N 2°28'52" E	172.95'
C70	80.26'	118.00'	S 15°18'44" W	78.73'
C71	32.45'	23.00'	N 5°36'59" W	29.82'
C72	36.13'	23.00'	S 88°58'09" W	32.53'
C73	50.07'	283.00'	N 46°01'51" W	50.00'

LINE TABLE

LINE	LENGTH	DIRECTION
L213	36.04'	N 69°45'02" W
L216	59.03'	N 69°45'02" W
L217	59.03'	N 69°45'02" W
L218	59.01'	N 69°45'02" W
L219	11.80'	S 4°16'00" E
L220	20.00'	S 4°16'00" E
L221	59.01'	N 69°45'02" W
L222	11.81'	S 4°16'00" E
L223	17.88'	S 4°16'00" E
L224	24.00'	S 4°16'00" E
L225	24.00'	S 4°16'00" E
L226	16.00'	S 4°16'00" E
L227	16.00'	S 4°16'00" E
L228	17.72'	S 4°16'00" E
L229	5.27'	S 34°47'56" W
L230	1.63'	N 53°50'59" W
L231	14.71'	N 5°42'44" W
L232	16.01'	N 5°42'44" W
L233	16.01'	N 5°42'44" W
L234	24.01'	N 5°42'44" W

LINE TABLE

LINE	LENGTH	DIRECTION
L235	16.65'	N 5°42'44" W
L236	59.10'	S 69°45'02" E
L247	15.64'	N 20°14'58" E
L254	18.00'	N 20°14'58" E
L255	20.00'	N 20°14'58" E
L256	16.00'	N 20°14'58" E
L257	9.00'	N 20°14'58" E
L258	18.00'	N 4°16'00" W

CURVE TABLE

CURVE	LENGTH	RADIUS	LONG CHORD	LENGTH
C264	10.26'	283.00'	N 14°28'03" E	10.26'
C266	36.13'	23.00'	N 65°14'58" E	32.53'
C268	35.21'	182.00'	N 8°54'51" E	35.15'
C269	16.07'	182.00'	N 0°50'43" E	16.06'
C270	8.20'	182.00'	N 2°58'31" W	8.20'
C271	16.02'	218.00'	N 1°36'19" W	16.02'
C273	16.28'	82.00'	S 5°48'32" W	16.25'
C274	33.35'	82.00'	S 23°08'50" W	33.12'
C275	31.84'	20.00'	S 80°28'29" W	28.62'
C276	43.06'	82.00'	N 38°48'24" W	42.57'
C277	16.50'	82.00'	N 17°59'59" W	16.47'
C279	7.36'	343.00'	S 6°19'38" E	7.36'
C280	20.06'	343.00'	S 8°37'04" E	20.06'
C281	16.13'	343.00'	S 11°38'27" E	16.13'
C282	130.23'	307.00'	S 17°51'53" E	129.26'
C283	99.14'	118.00'	N 29°46'51" W	96.25'
C284	31.66'	232.00'	S 49°56'25" E	31.63'
C288	34.12'	250.00'	S 49°56'25" E	34.04'
C289	137.86'	325.00'	S 17°51'53" E	136.83'
C290	68.18'	100.00'	S 15°15'58" W	66.87'

CURVE TABLE

CURVE	LENGTH	RADIUS	LONG CHORD	LENGTH
C291	85.58'	200.00'	S 7°59'29" W	84.93'
C292	63.62'	40.50'	S 65°14'58" W	57.28'
C299	66.34'	283.00'	S 8°35'44" E	66.19'
C301	16.03'	182.00'	S 16°58'54" W	16.03'
C302	2.36'	264.15'	S 20°14'58" W	2.36'
C738	84.02'	100.00'	N 29°46'51" W	81.57'
C770	25.03'	283.00'	S 48°33'54" E	25.02'
C771	25.03'	283.00'	S 43°29'49" E	25.02'

SCALE
HORIZONTAL: 1" = 30'
VERTICAL: 1" = 30'

RECORDED #
STATE OF UTAH, COUNTY OF WEBER,
RECORDED AND FILED AT THE
REQUEST OF:
ENTRY NO.:
DATE: TIME:
BOOK: PAGE:
FEE \$
WEBER COUNTY RECORDER

Sheet 2 of 2

NV5

NOTLE VERTICAL FIVE
5217 SOUTH STATE STREET, SUITE 300 HURRY: UT 84107
801.743.1300 TEL 801.743.0300 FAX WWW.NV5.COM