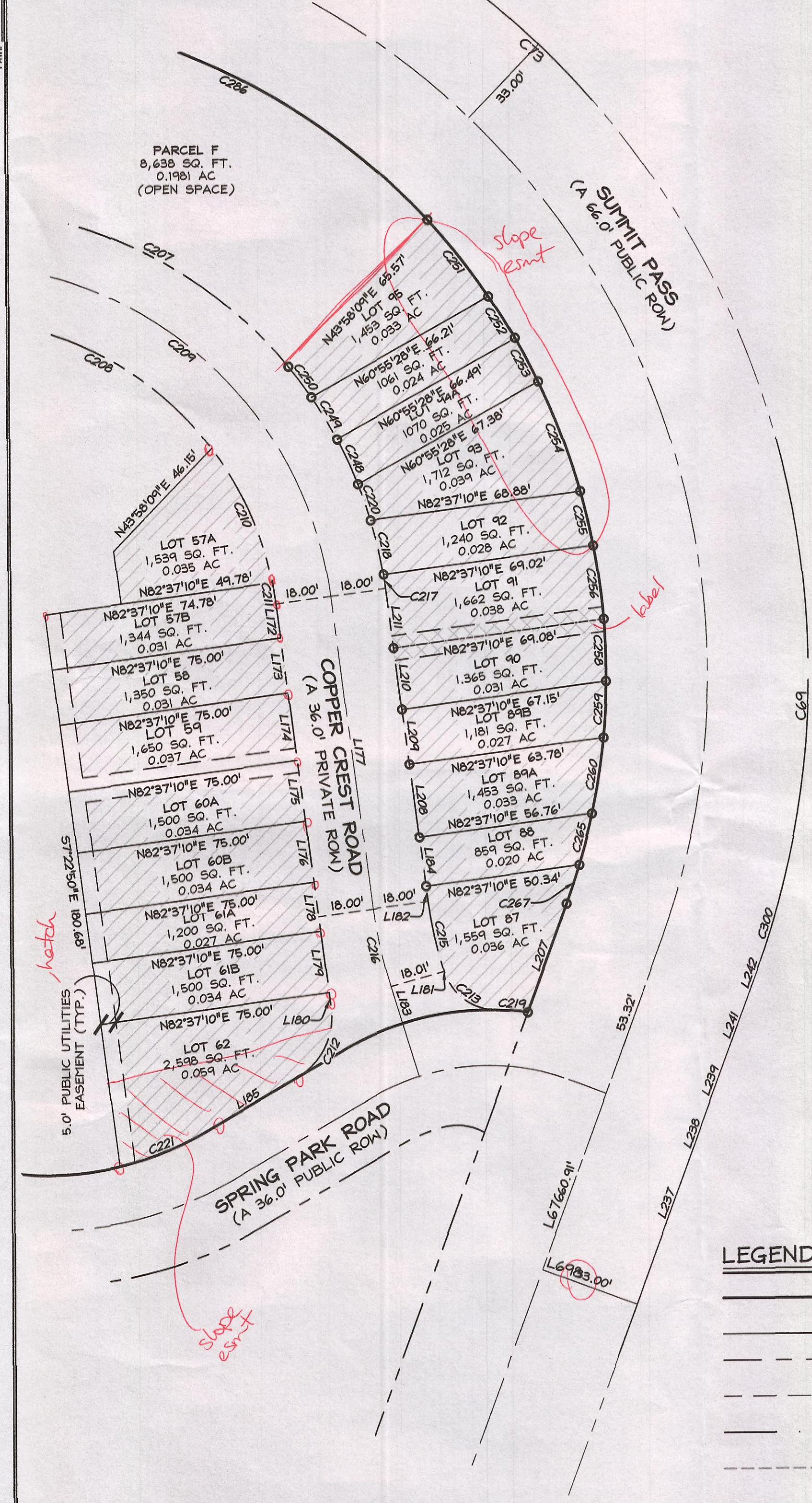


SUMMIT AT POWDER MOUNTAIN PHASE 1C

LOCATED IN THE NORTH HALF OF SECTION 8, T 7N, R 2E, S1B1M,
WEBER COUNTY, UTAH.

DRAWING NAME: PLATTING NEW
DATE: 10/20/2023
SERVER: PLATTING NEW
PAR: 10/20/2023



LINE	LENGTH	DIRECTION
L150	76.37'	S 16°40'20" E
L151	150.90'	S 16°40'20" E
L152	34.27'	S 16°40'20" E
L153	79.01'	N 42°22'41" W
L154	52.33'	N 66°28'34" W
L155	165.00'	N 66°28'34" W
L156	8.63'	N 66°28'34" W
L157	46.14'	N 48°29'04" W
L158	49.24'	N 48°29'04" W
L159	93.74'	S 81°19'28" E
L160	93.74'	N 81°19'28" E
L161	57.11'	S 81°19'28" E
L162	36.62'	S 81°19'28" E
L163	64.70'	S 70°13'16" E
L164	64.70'	N 70°13'16" W
L165	32.06'	S 70°13'16" E
L166	32.64'	S 70°13'16" E
L167	32.71'	N 84°03'51" E
L168	138.80'	S 84°03'51" W
L169	40.00'	N 84°03'51" E

LINE	LENGTH	DIRECTION
L170	40.00'	N 84°03'51" E
L171	26.09'	N 84°03'51" E
L172	11.11'	N 72°25'0" W
L173	18.00'	N 72°25'0" W
L174	22.00'	N 72°25'0" W
L175	20.00'	N 72°25'0" W
L176	20.00'	N 72°25'0" W
L177	102.39'	N 72°25'0" W
L178	16.00'	N 72°25'0" W
L179	20.00'	S 72°25'0" E
L180	4.86'	S 72°25'0" E
L181	58.04'	S 52°40'58" E
L182	4.92'	S 72°25'0" E
L183	12.59'	N 17°14'09" W
L184	16.00'	N 72°25'0" W
L185	34.38'	S 59°58'41" W
L186	59.72'	N 52°40'58" E
L187	27.89'	N 77°52'47" W
L188	37.37'	N 77°52'47" W
L189	60.00'	N 77°52'47" W

LINE	LENGTH	DIRECTION
L190	19.14'	N 77°52'47" W
L191	33.20'	S 76°22'37" W
L192	36.54'	S 76°22'37" W
L193	47.52'	S 76°22'37" W
L194	5.04'	N 78°24'40" W
L195	5.04'	S 78°24'40" E
L196	117.26'	N 76°22'37" W
L197	46.57'	S 77°52'47" E
L198	61.71'	S 77°52'47" E
L199	36.12'	S 77°52'47" E
L200	1.68'	S 52°40'58" E
L201	58.04'	S 52°40'58" E
L202	111.93'	S 52°26'14" W
L203	126.69'	N 76°28'35" W
L204	128.38'	N 16°46'15" E
L205	97.33'	S 1°35'20" W
L206	116.81'	N 26°45'20" E
L207	17.40'	N 20°16'24" E
L208	24.00'	N 72°25'0" W
L209	18.00'	N 72°25'0" W

LINE	LENGTH	DIRECTION
L359	48.65'	N 33°31'24" W
L360	81.49'	N 16°46'15" E
L361	27.23'	S 81°19'28" E
L362	75.91'	S 12°35'17" W
L363	75.91'	S 12°35'17" W
L364	54.44'	N 85°55'50" W
L365	65.35'	S 6°50'25" E
L366	65.65'	N 85°55'50" W
L367	74.42'	N 12°35'17" E
L369	1.01'	S 70°13'16" E
L370	24.54'	N 70°13'16" E
L371	60.94'	S 6°50'25" E
L372	26.67'	N 83°04'35" E
L373	43.33'	N 12°07'13" E
L374	29.59'	N 77°52'47" W
L375	41.88'	N 12°07'13" E
L377	40.50'	S 12°34'07" W
L378	33.56'	N 77°52'47" W
L379	40.42'	N 12°34'07" E
L381	41.46'	S 8°08'39" W
L382	33.98'	N 77°52'47" W

LINE	LENGTH	DIRECTION
L335	77.71'	S 42°22'41" E
L337	23.19'	N 66°28'34" W
L339	104.60'	S 58°07'34" W
L341	96.62'	N 39°06'53" E
L342	69.25'	N 45°30'01" W
L343	29.44'	N 66°28'34" W
L344	103.82'	S 39°06'53" W
L345	103.41'	S 66°28'34" E
L346	77.48'	N 37°24'48" E
L347	1.98'	N 66°28'34" W
L348	111.74'	S 37°24'48" W
L349	101.30'	S 52°04'52" E
L350	121.94'	N 37°55'08" E
L351	58.82'	S 56°28'36" W
L352	81.94'	N 52°04'52" W
L353	82.50'	N 37°55'08" E
L354	1.91'	S 48°29'04" E
L355	65.66'	N 56°28'36" E
L357	63.48'	S 16°46'15" W
L358	72.64'	N 76°28'35" W

LINE	LENGTH	DIRECTION
L210	20.00'	N 72°25'0" W
L211	19.48'	N 72°25'0" W
L240	160.34'	N 83°44'18" W
L243	31.05'	N 84°03'51" E
L244	9.02'	N 84°03'51" E
L245	37.44'	S 77°52'47" E
L246	30.21'	N 83°04'35" E
L317	90.00'	N 77°34'14" E
L319	50.61'	S 16°40'20" E
L320	90.02'	S 74°24'41" W
L321	48.91'	N 16°40'20" W
L323	90.39'	S 68°00'36" W
L324	100.24'	N 16°40'20" W
L325	90.02'	N 74°24'41" E
L326	90.16'	S 16°40'20" E
L327	80.34'	S 52°14'21" W
L329	80.14'	N 68°00'36" E
L331	90.17'	N 40°25'04" E
L333	70.45'	S 42°22'41" W
L334	90.29'	S 52°14'21" W

LINE	LENGTH	DIRECTION
L383	42.15'	N 8°08'39" E
L385	45.82'	S 3°43'11" W
L386	52.88'	S 0°42'17" E
L387	2.65'	S 84°03'51" W
L388	32.17'	N 77°52'47" W
L389	47.29'	N 3°43'11" E
L390	34.37'	S 84°03'51" W
L391	51.96'	N 0°42'17" E
L393	50.15'	S 5°07'44" E
L394	30.77'	S 84°03'51" W
L395	50.01'	N 5°07'44" W
L397	27.71'	N 84°03'51" E
L398	50.00'	S 5°56'09" E
L399	30.00'	S 84°03'51" W
L400	50.00'	N 5°56'09" E
L401	30.00'	N 84°03'51" E
L402	50.00'	S 5°56'09" E
L403	30.00'	S 84°03'51" W
L404	50.00'	N 5°56'09" E
L405	30.00'	N 84°03'51" E

LINE	LENGTH	DIRECTION
L406	50.00'	S 5°56'09" E
L407	24.08'	S 84°03'51" W
L408	50.00'	N 5°56'09" E
L409	21.09'	N 84°03'51" W
L410	50.03'	N 77°52'47" W
L412	44.09'	S 58°47'33" E
L413	46.56'	S 31°12'27" W
L415	50.27'	N 0°42'17" E
L416	32.93'	N 77°52'47" W
L417	45.36'	S 12°07'13" W
L419	48.60'	N 21°35'13" E
L420	27.92'	N 77°52'47" W
L421	45.00'	S 5°56'09" E
L422	22.89'	S 77°52'47" E
L424	45.05'	N 13°55'36" E
L425	45.00'	S 12°07'13" W
L426	27.37'	N 77°52'47" W
L427	45.00'	N 12°07'13" E
L428	50.30'	N 5°56'09" E
L429	27.92'	S 77°52'47" E

LINE	LENGTH	DIRECTION
L430	50.00'	S 12°07'13" W
L431	14.14'	N 77°52'47" W
L433	50.01'	S 8°47'27" W
L434	50.01'	N 1°26'42" E
L435	50.01'	S 1°26'42" W
L436	50.01'	S 5°54'02" W
L437	50.01'	S 5°54'02" E
L438	50.01'	N 13°14'46" W
L439	50.00'	N 13°14'46" W
L440	25.33'	S 76°22'37" W
L441	50.00'	S 13°37'23" E
L442	25.00'	N 76°22'37" E
L443	50.00'	N 13°37'23" W
L444	26.54'	S 76°22'37" W
L445	50.00'	S 13°37'23" E
L446	26.54'	N 76°22'37" E
L447	42.68'	N 77°52'47" W
L448	65.08'	N 8°11'08" E
L450	41.57'	S 77°52'47" E
L451	65.00'	S 12°07'13" W

LINE	LENGTH	DIRECTION
L452	51.24'	N 77°52'47" W
L453	65.00'	S 12°07'13" W
L454	45.32'	S 77°52'47" E
L455	65.27'	N 17°19'26" E
L456	31.55'	N 77°52'47" W
L457	65.27'	S 17°19'26" W
L458	55.64'	S 77°52'47" E
L459	64.01'	N 20°16'39" E
L460	64.46'	N 20°16'39" E
L462	70.16'	S 37°19'02" W
L463	39.51'	N 52°40'58" E
L464	70.19'	N 37°19'02" E
L465	48.04'	S 52°40'58" E
L466	70.19'	S 37°19'02" W
L467	48.04'	N 52°40'58" W
L468	26.75'	N 52°40'58" E
L469	70.27'	N 37°19'02" E
L471	57.51'	S 18°13'54" W
L472	36.53'	N 90°00'00" W
L473	7.67'	S 78°24'40" E

LINE	LENGTH	DIRECTION
L474	30.10'	S 78°24'40" E
L475	30.20'	S 13°37'23" E
L476	27.70'	S 89°52'57" W
L477	3.30'	S 78°24'40" E
L580	51.67'	N 85°55'50" W
L581	42.52'	N 76°22'37" E
L582	78.81'	S 10°59'59" W
L583	80.98'	N 10°59'59" E
L584	88.18'	S 11°35'20" W
L585	87.24'	N 11°35'20" E
L586	61.21'	S 11°35'20" W
L587	68.21'	N 26°45'20" E
L588	60.59'	N 54°33'35" W
L589	67.00'	S 39°25'43" W
L590	54.34'	S 1°51'41" W
L591	64.50'	N 39°32'48" E
L592	64.39'	N 54°33'35" W
L593	59.01'	S 49°20'31" W
L594	49.86'	S 0°07'03" E
L595	56.06'	N 88°44'21" E

LINE	LENGTH	DIRECTION
L596	73.86'	S 41°27'32" W
L597	67.89'	N 0°07'03" E
L598	71.64'	N 76°22'37" E
L599	60.21'	N 35°26'25" E
L660	92.49'	N 54°33'35" W
L661	62.18'	S 26°45'20" W
L662	57.51'	N 81°21'59" E
L663	17.44'	S 2°50'09" W
L664	39.89'	N 74°44'51" W
L665	62.17'	N 88°32'16" W
L666	41.14'	S 1°01'28" W
L667	41.82'	S 67°41'09" W
L668	35.51'	N 81°56'14" W
L669	51.04'	S 61°03'33" W
L670	42.46'	S 53°43'28" W
L671	69.38'	S 25°20'45" W
L672	33.18'	S 77°52'47" E
L673	65.02'	N 84°03'51" E
L674	74.82'	S 78°43'54" E
L675	42.13'	N 5°56'09" E

CURVE	LENGTH	RADIUS	LONG CHORD	LENGTH
C179	99.60'	603.42'	S 11°56'38" E	99.48'
C180	159.37'	433.00'	S 27°13'00" E	158.47'
C181	34.89'	433.00'	S 40°04'10" E	34.88'
C182	54.44'	433.00'	S 45°58'49" E	54.41'
C183	40.00'	433.00'	S 58°01'45" E	127.21'
C184	115.24'	367.00'	N 57°28'49" W	114.77'
C185	88.08'	433.00'	S 54°18'44" E	87.93'
C186	120.43'	75.00'	N 35°19'21" W	107.90'
C187	58.96'	433.00'	S 64°02'26" E	58.91'
C188	58.92'	95.00'	S 15°22'27" E	57.94'
C189	120.43'	75.00'	N 35°19'21" W	107.90'
C190	25.68'	18.00'	S 10°23'05" E	23.55'
C191	29.92'	57.00'	S 66°17'14" E	29.58'
C192	77.59'	95.00'	S 57°25'26" E	75.36'
C193	26.09'	382.00'	N 79°22'05" W	26.08'
C194	81.00'	418.00'	N 75°46'22" W	80.88'
C195	77.52'	400.00'	N 75°46'22" W	77.39'
C196	47.94'	382.00'	N 73°49'00" W	47.91'
C197	10.90'	482.00'	S 70°52'09" E	10.90'
C198	25.19'	518.00'	S 71°36'51" E	25.18'

CURVE	LENGTH	RADIUS	LONG CHORD	LENGTH
C199	40.00'	518.00'	S 75°13'09" E	39.99'
C200	40.00'	518.00'	S 79°38'37" E	39.99'
C201	40.00'	518.00'	S 84°04'05" E	39.99'
C202	224.40'	500.00'	N 83°04'43" W	222.52'
C203	40.00'	518.00'	S 88°29'33" E	39.99'
C204	40.00'	518.00'	N 87°05'00" E	39.99'
C2				