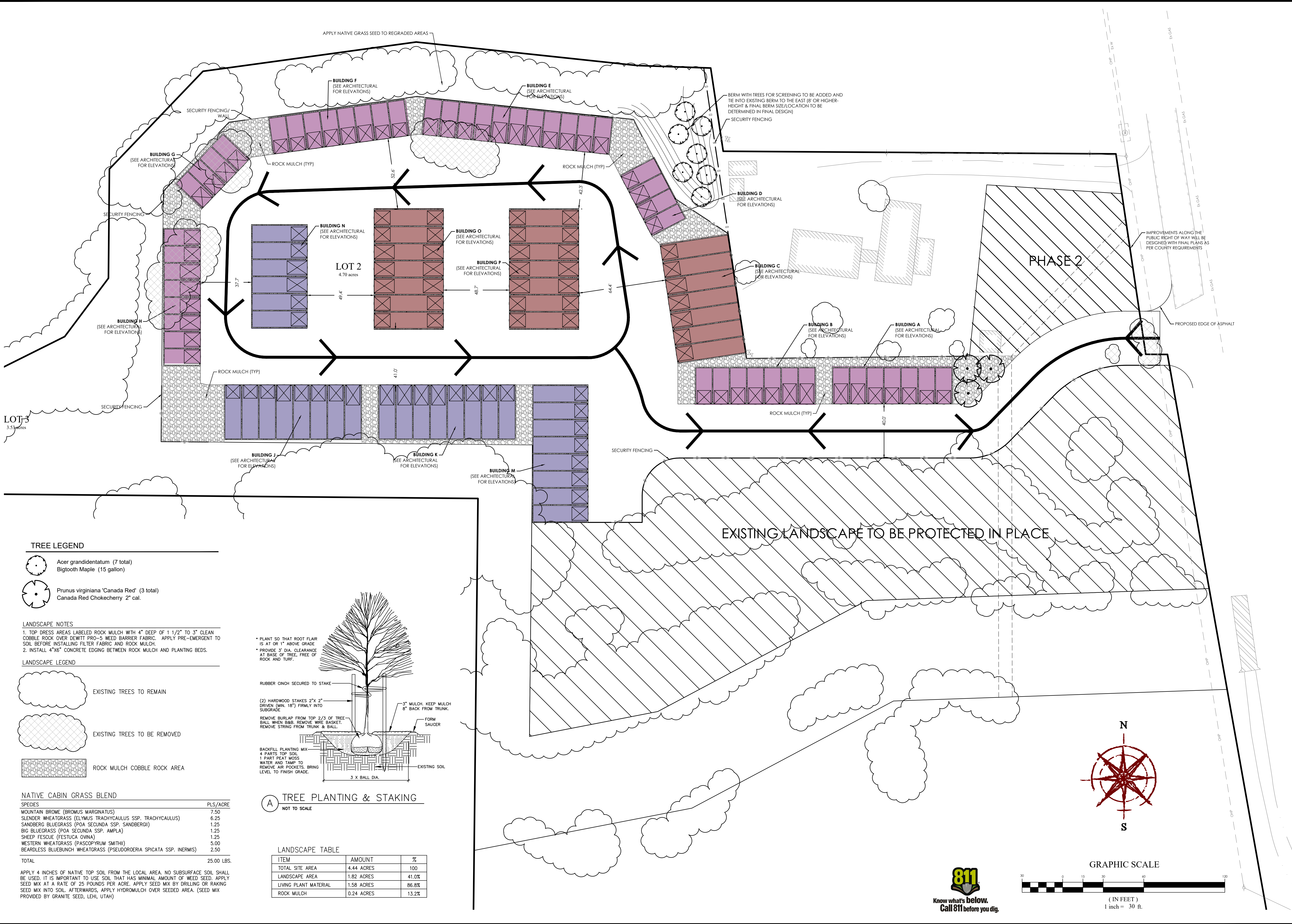


**EDEN BOAT & RV STORAGE PH. 1**  
 EDEN, UTAH  
**LANDSCAPE PLAN**



**TREE LEGEND**

- Acer grandidentatum (7 total)
- Bigtooth Maple (15 gallon)
- Prunus virginiana 'Canada Red' (3 total)
- Canada Red Chokecherry 2" cal.

**LANDSCAPE NOTES**

1. TOP DRESS AREAS LABELED ROCK MULCH WITH 4" DEEP OF 1 1/2" TO 3" CLEAN COBBLE ROCK OVER DEWITT PRO-5 WEED BARRIER FABRIC. APPLY PRE-EMERGENT TO SOIL BEFORE INSTALLING FILTER FABRIC AND ROCK MULCH.
2. INSTALL 4"x6" CONCRETE EDGING BETWEEN ROCK MULCH AND PLANTING BEDS.

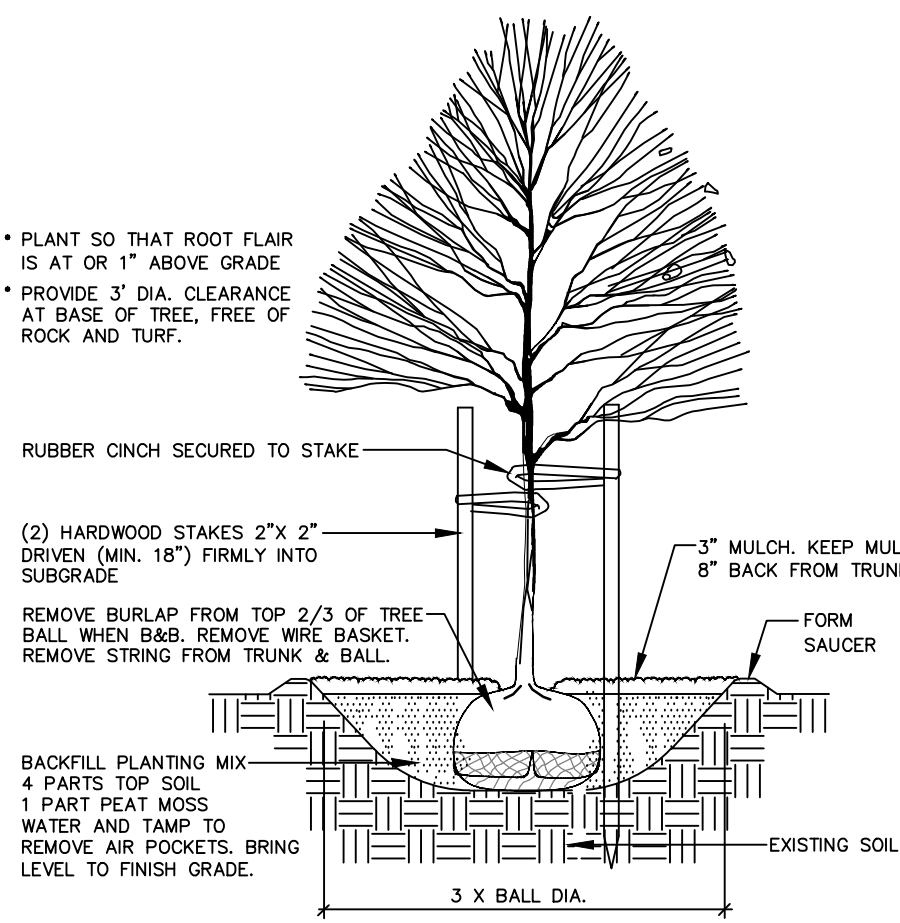
**LANDSCAPE LEGEND**

- EXISTING TREES TO REMAIN
- EXISTING TREES TO BE REMOVED
- ROCK MULCH COBBLE ROCK AREA

**NATIVE CABIN GRASS BLEND**

SPECIES	PLS./ACRE
MOUNTAIN BROWE (BROMUS MARGINATUS)	7.50
SLENDER WHEATGRASS (ELYMUS TRACHYCAULUS SSP. TRACHYCAULUS)	6.25
SANDBERG BLUEGRASS (POA SECUNDA SSP. SANDBERGI)	1.25
BIG BLUEGRASS (POA SECUNDA SSP. AMPLA)	1.25
SHEEP FESCUE (FESTUCA OVINA)	1.25
WESTERN WHEATGRASS (PASOPHYRUM SMITHII)	5.00
BEARDLESS BLUEBUNCH WHEATGRASS (PSEUDOROGERIA SPICATA SSP. INERMIS)	2.50
<b>TOTAL</b>	<b>25.00 LBS.</b>

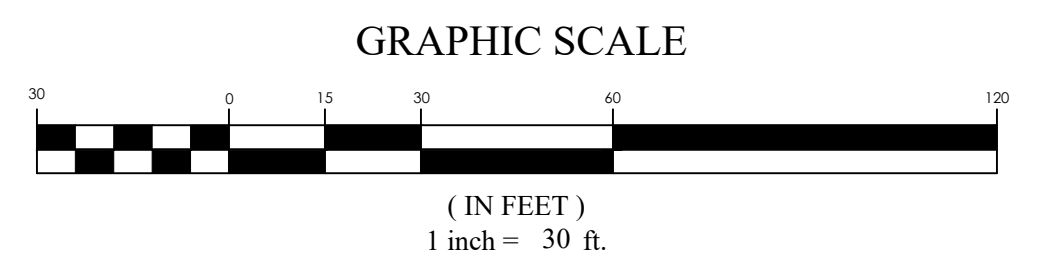
APPLY 4 INCHES OF NATIVE TOP SOIL FROM THE LOCAL AREA. NO SUBSURFACE SOIL SHALL BE USED. IT IS IMPORTANT TO USE SOIL THAT HAS MINIMAL AMOUNT OF WEED SEED. APPLY SEED MIX AT A RATE OF 25 POUNDS PER ACRE. APPLY SEED MIX BY DRILLING OR RAKING SEED MIX INTO SOIL. AFTERWARDS, APPLY HYDROMULCH OVER SEEDING AREA. (SEED MIX PROVIDED BY GRANITE SEED, LEHI, UTAH)



**A TREE PLANTING & STAKING**  
 NOT TO SCALE

**LANDSCAPE TABLE**

ITEM	AMOUNT	%
TOTAL SITE AREA	4.44 ACRES	100
LANDSCAPE AREA	1.82 ACRES	41.0%
LIVING PLANT MATERIAL	1.58 ACRES	86.8%
ROCK MULCH	0.24 ACRES	13.2%



**REVISION BLOCK**

#	DATE	DESCRIPTION
1		
2		
3		
4		
5		
6		

**LANDSCAPE PLAN**

Scale: 1"=30' Drawn: AW  
 Date: 06/17/20 Job #: 19-0205  
 Sheet: L-1