

SUMMIT EDEN
PHASE 1 PRUD SUBMITTAL

POWDER MOUNTAIN, WEBER COUNTY, UTAH



DATE:	JANUARY 25, 2013
PROJECT:	1301
DRAWN BY:	
REVIEW BY:	
VERSION:	PRUD
REVISIONS:	

SHEET TITLE:
RIDGE NEST 1

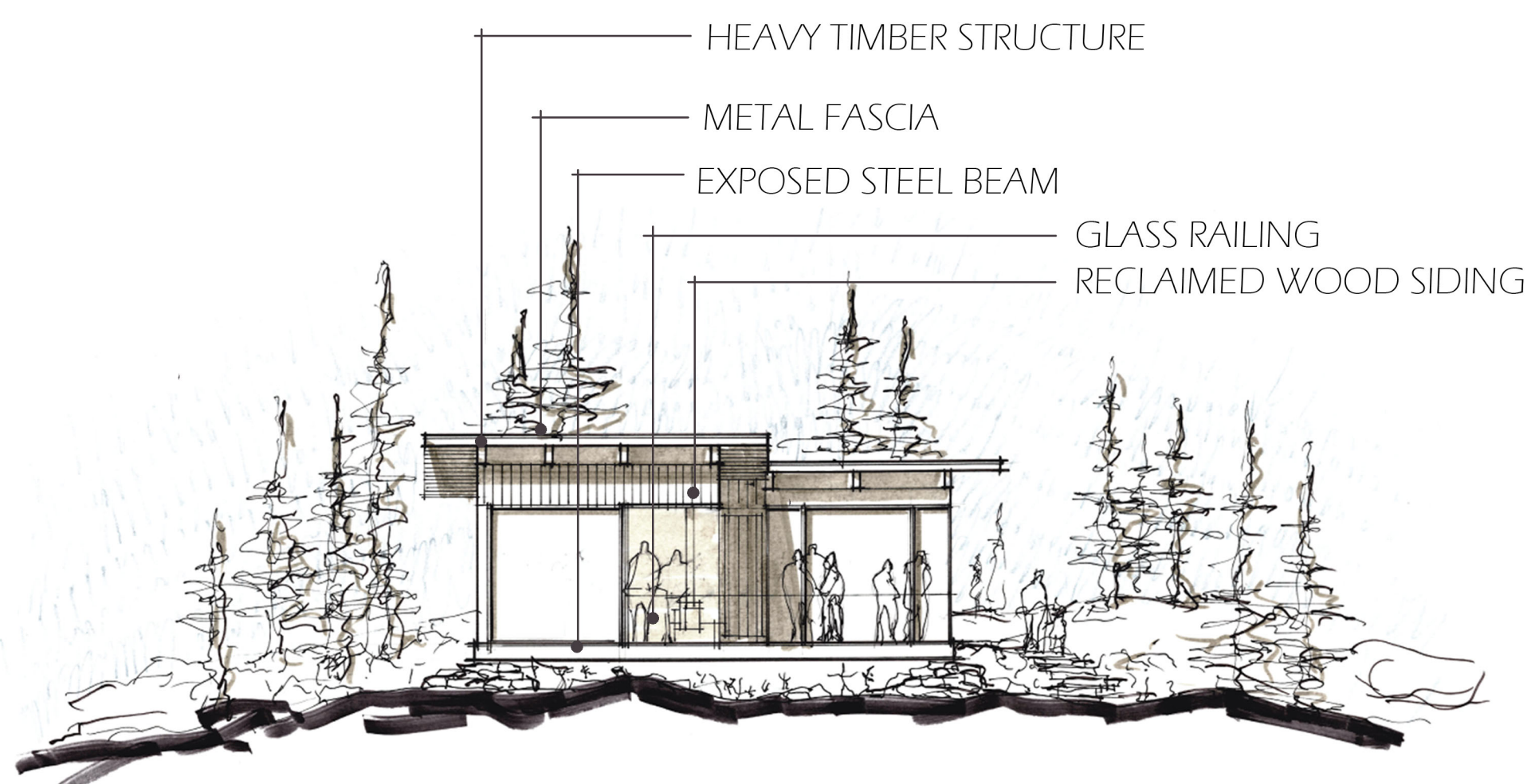
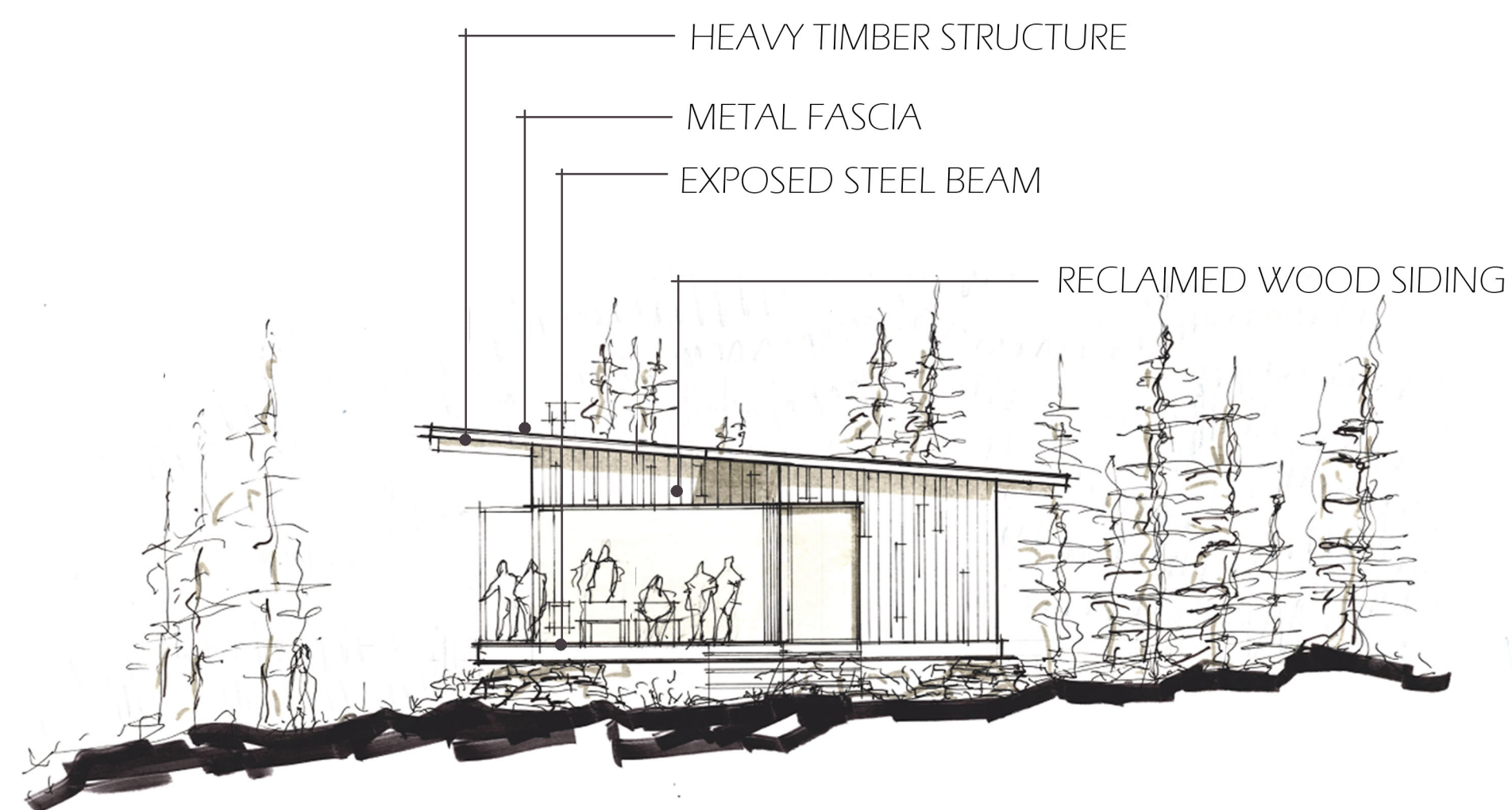
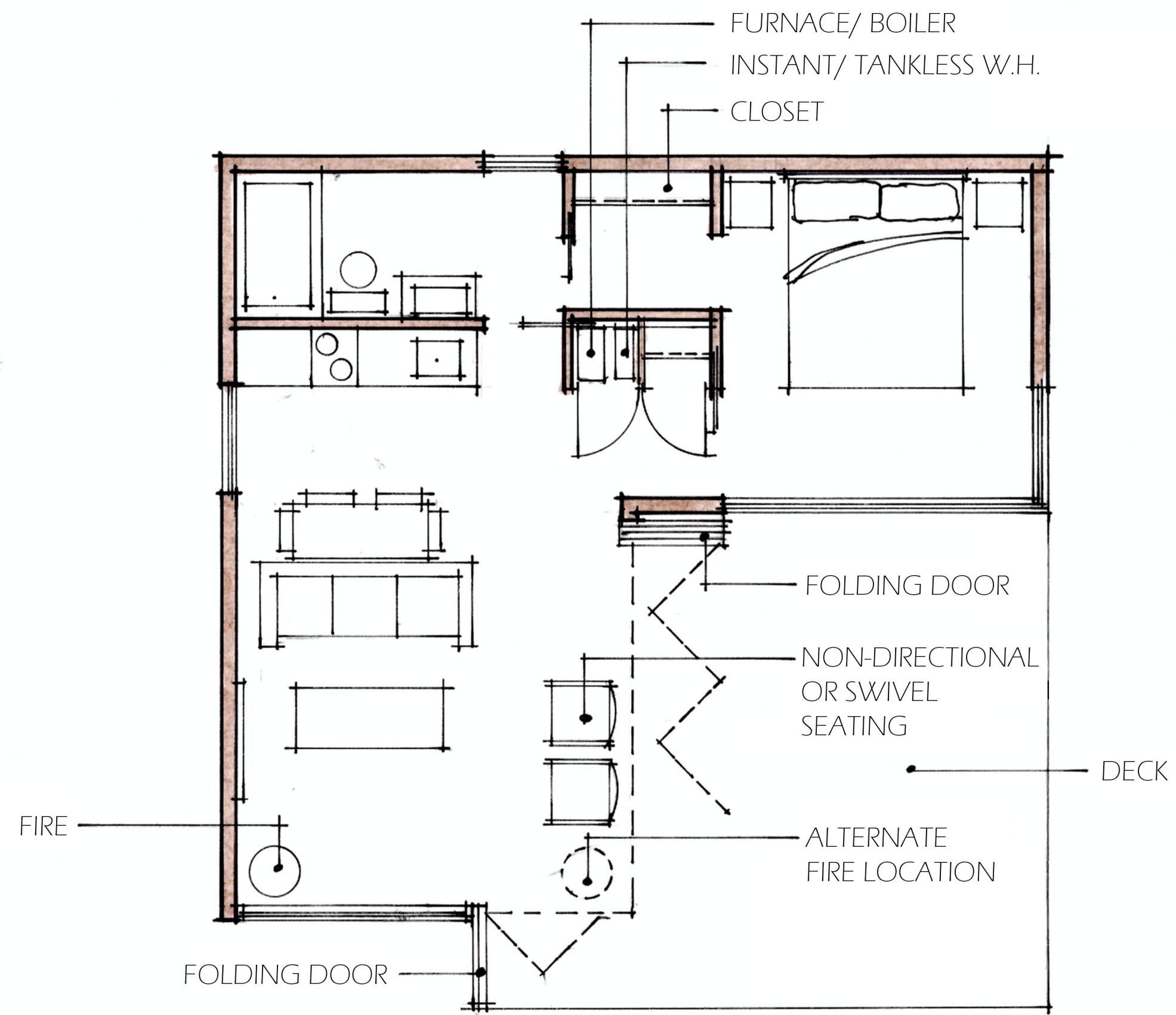
SHEET NUMBER:

A1.1

RIDGE NEST 1



NOTE: THESE DRAWINGS ARE CONCEPTUAL AND THEMATIC IN NATURE. THEY ARE INTENDED TO ILLUSTRATE GENERAL DESIGN STYLE, MATERIALS AND FORMS. THEY ARE NOT FINAL BUILDING CONFIGURATIONS OR FOOTPRINTS. ALL BUILDINGS WITHIN PHASE 1 WILL FOLLOW APPROVED SUMMIT EDEN CCR'S AND DESIGN GUIDELINES.



RIDGE NEST 2



SUMMIT EDEN
PHASE 1 PRUD SUBMITTAL

POWDER MOUNTAIN, WEBER COUNTY, UTAH



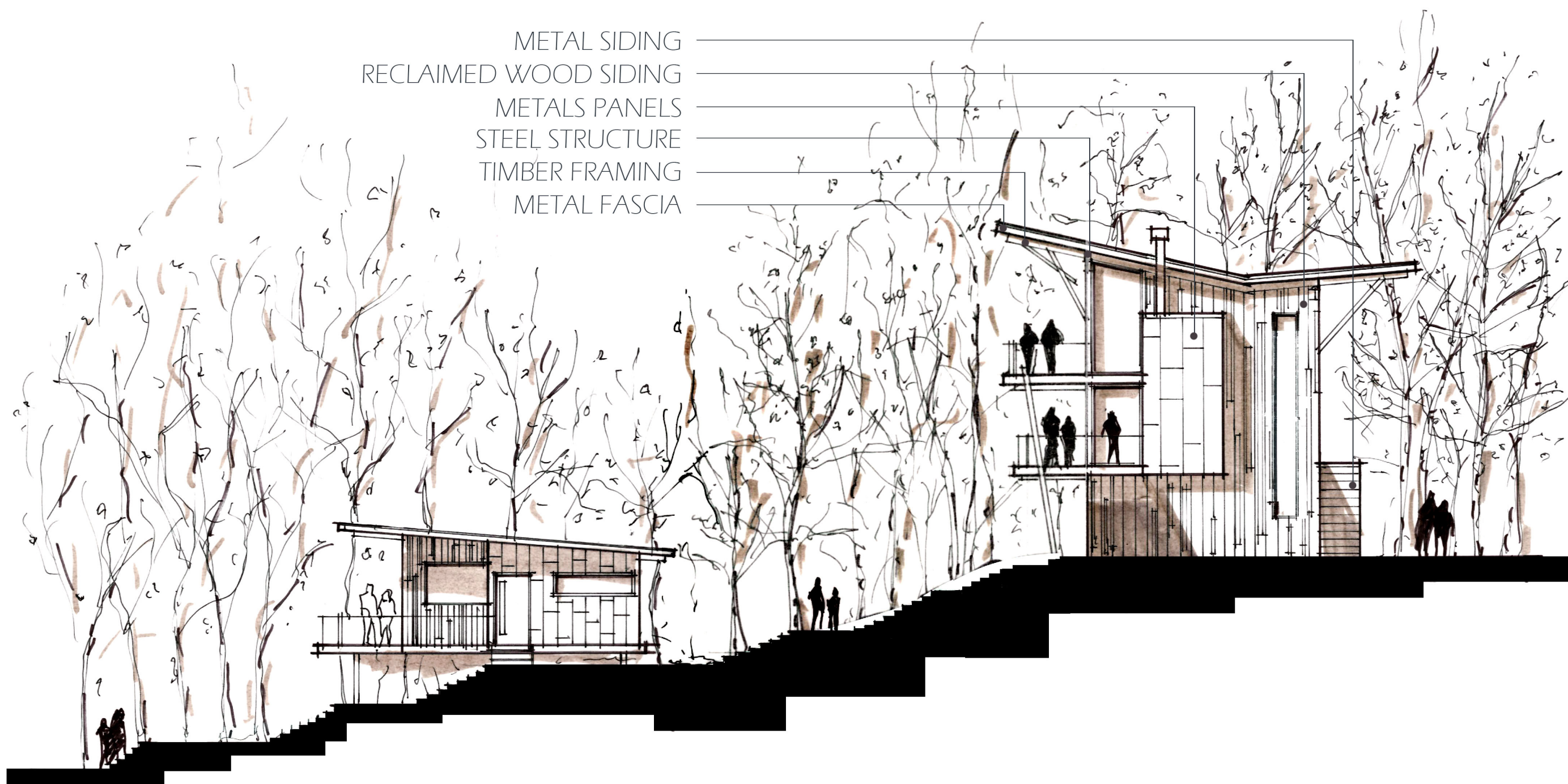
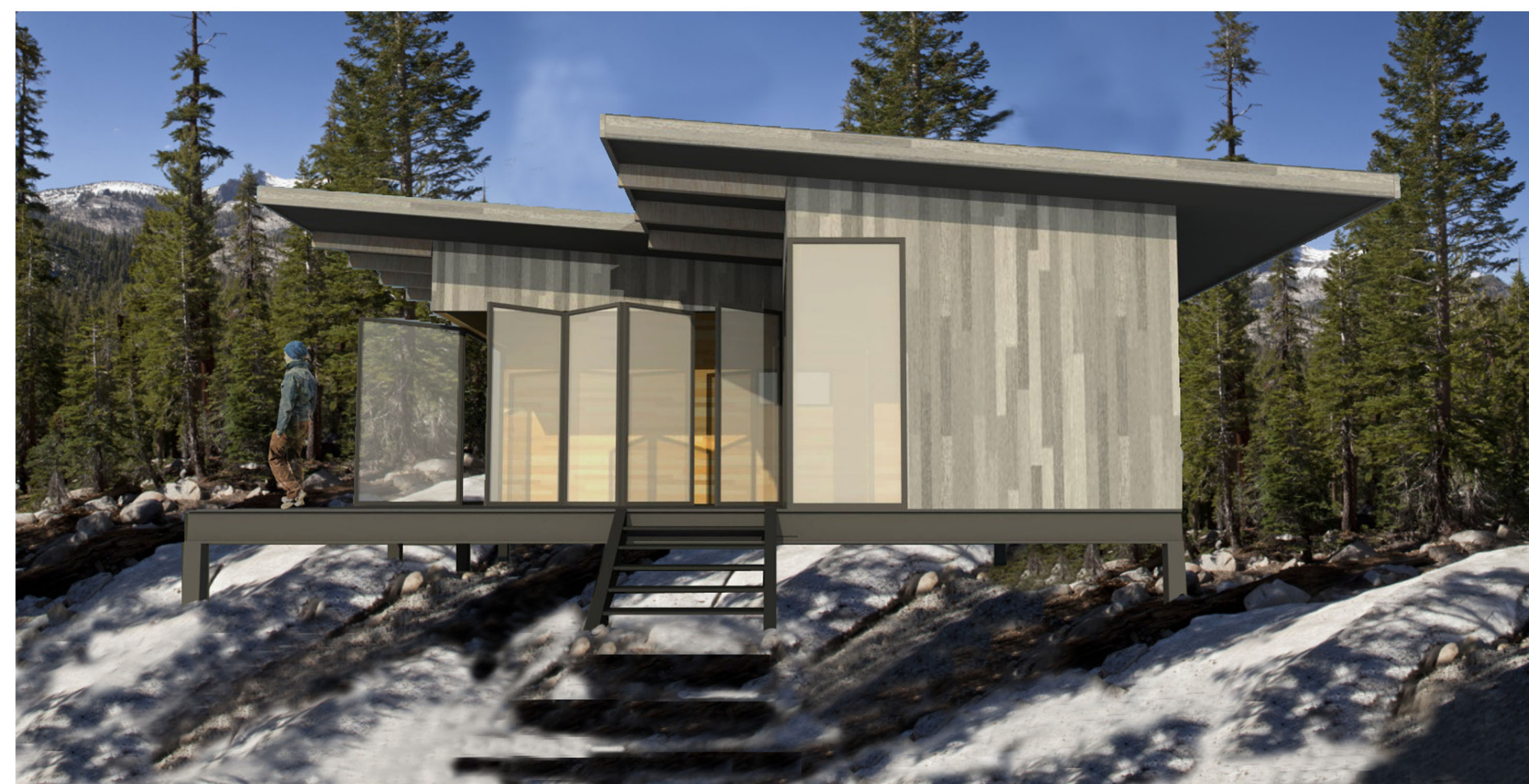
DATE:	JANUARY 25, 2013
PROJECT:	1301
DRAWN BY:	
REVIEW BY:	
VERSION:	PRUD
REVISIONS:	

SHEET TITLE:
RIDGE
NEST 2

SHEET NUMBER:

A1.2

NOTE: THESE DRAWINGS ARE CONCEPTUAL AND THEMATIC IN NATURE. THEY ARE INTENDED TO ILLUSTRATE GENERAL DESIGN STYLE, MATERIALS AND FORMS. THEY ARE NOT FINAL BUILDING CONFIGURATIONS OR FOOTPRINTS. ALL BUILDINGS WITHIN PHASE 1 WILL FOLLOW APPROVED SUMMIT EDEN CCR'S AND DESIGN GUIDELINES.



- METAL SIDING
- RECLAIMED WOOD SIDING
- METALS PANELS
- STEEL STRUCTURE
- TIMBER FRAMING
- METAL FASCIA



VILLAGE NESTS

NOTE: THESE DRAWINGS ARE CONCEPTUAL AND THEMATIC IN NATURE. THEY ARE INTENDED TO ILLUSTRATE GENERAL DESIGN STYLE, MATERIALS AND FORMS. THEY ARE NOT FINAL BUILDING CONFIGURATIONS OR FOOTPRINTS. ALL BUILDINGS WITHIN PHASE 1 WILL FOLLOW APPROVED SUMMIT EDEN CCRS AND DESIGN GUIDELINES.

SUMMIT EDEN
 PHASE 1 PRUD SUBMITTAL

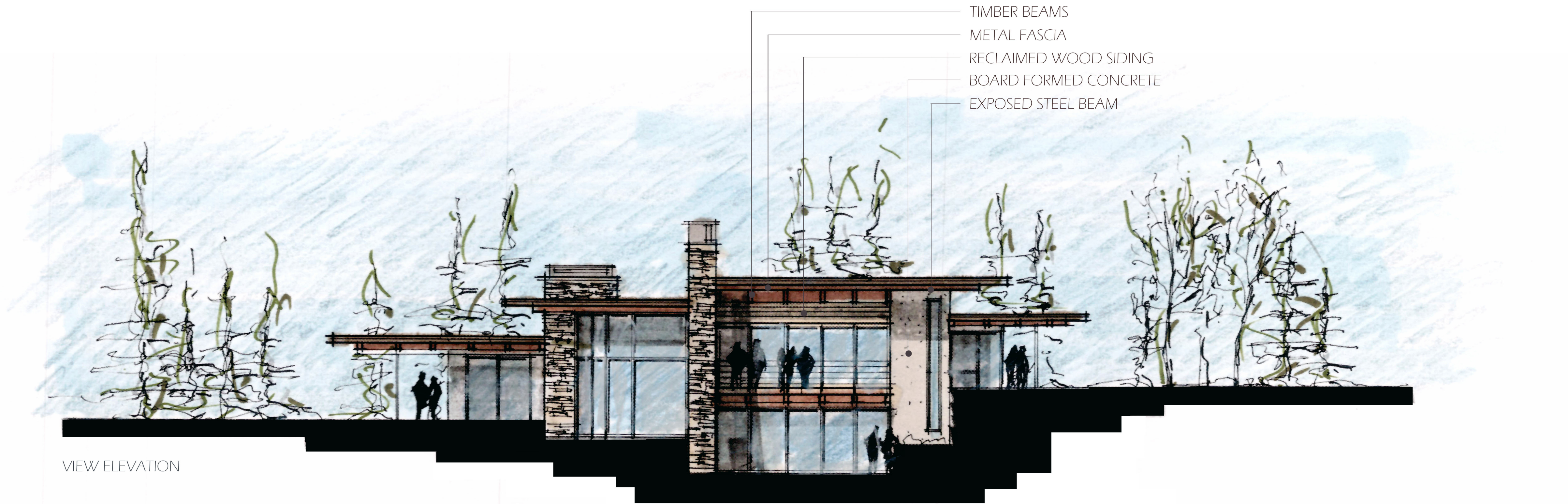
POWDER MOUNTAIN, WEBER COUNTY, UTAH



DATE:	JANUARY 25, 2013
PROJECT:	1301
DRAWN BY:	
REVIEW BY:	
VERSION:	PRUD
REVISIONS:	

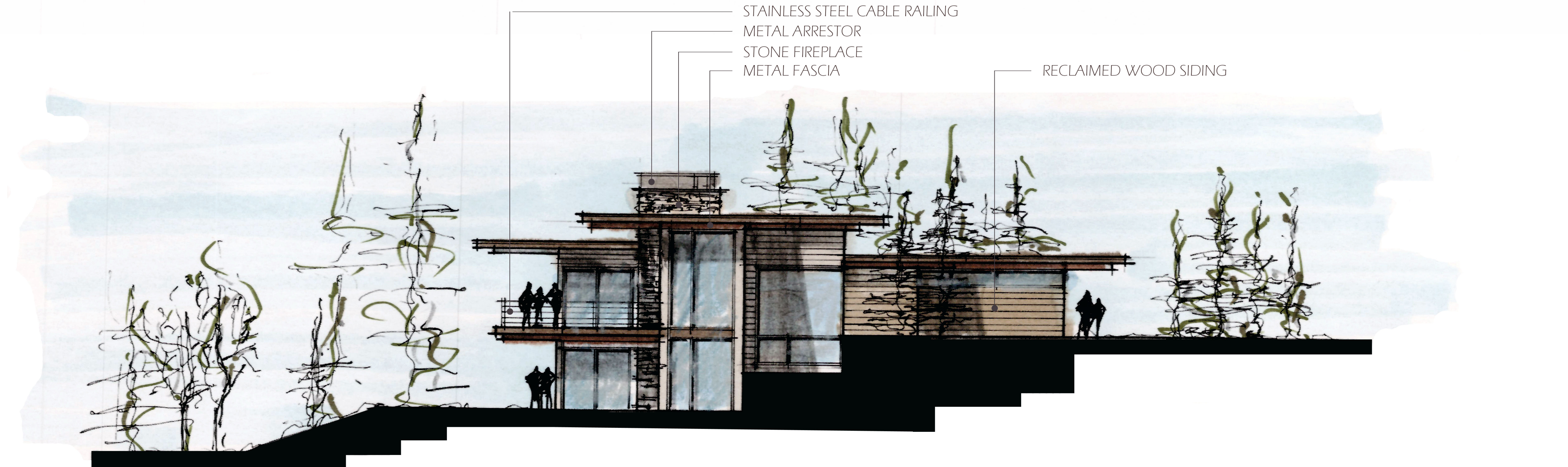
SHEET TITLE:
 VILLAGE NESTS

SHEET NUMBER:
A1.3



VIEW ELEVATION

- TIMBER BEAMS
- METAL FASCIA
- RECLAIMED WOOD SIDING
- BOARD FORMED CONCRETE
- EXPOSED STEEL BEAM



SIDE ELEVATION

- STAINLESS STEEL CABLE RAILING
- METAL ARRESTOR
- STONE FIREPLACE
- METAL FASCIA
- RECLAIMED WOOD SIDING

CABIN RESIDENCE



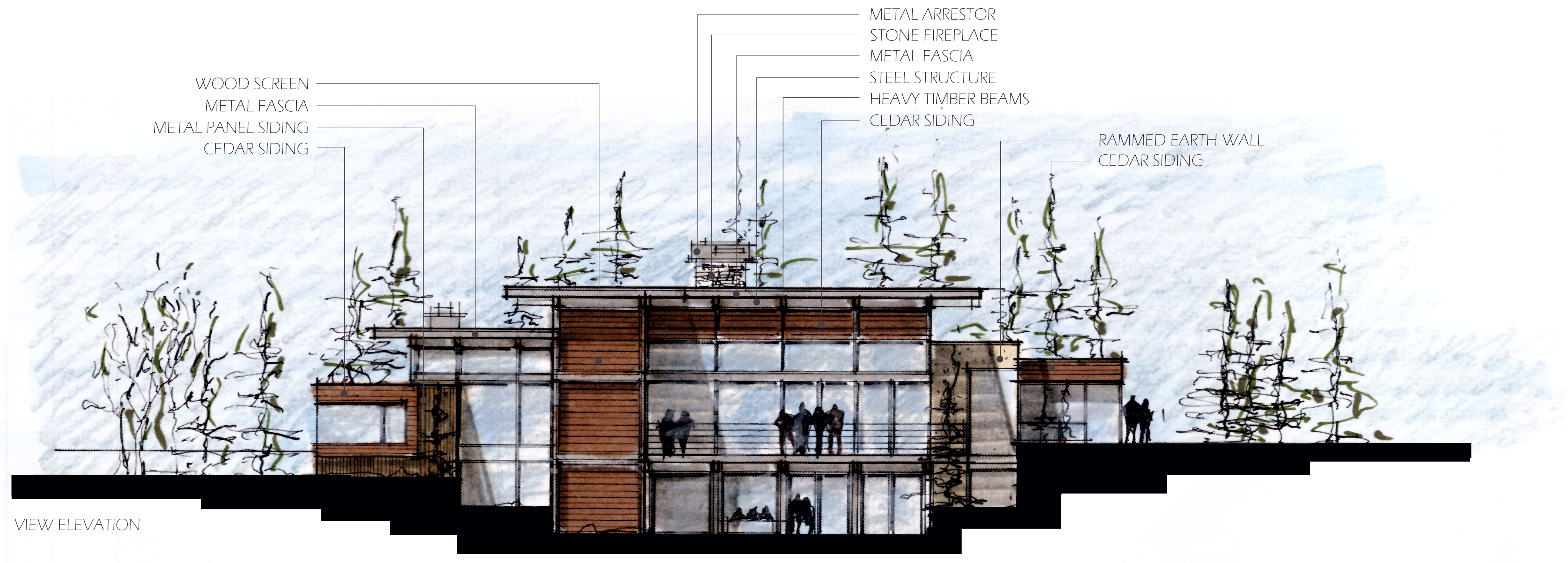
NOTE: THESE DRAWINGS ARE CONCEPTUAL AND THEMATIC IN NATURE. THEY ARE INTENDED TO ILLUSTRATE GENERAL DESIGN STYLE, MATERIALS AND FORMS. THEY ARE NOT FINAL BUILDING CONFIGURATIONS OR FOOTPRINTS. ALL BUILDINGS WITHIN PHASE 1 WILL FOLLOW APPROVED SUMMIT EDEN CCR'S AND DESIGN GUIDELINES.



DATE:	JANUARY 25, 2013
PROJECT:	1301
DRAWN BY:	
REVIEW BY:	
VERSION:	PRUD
REVISIONS:	

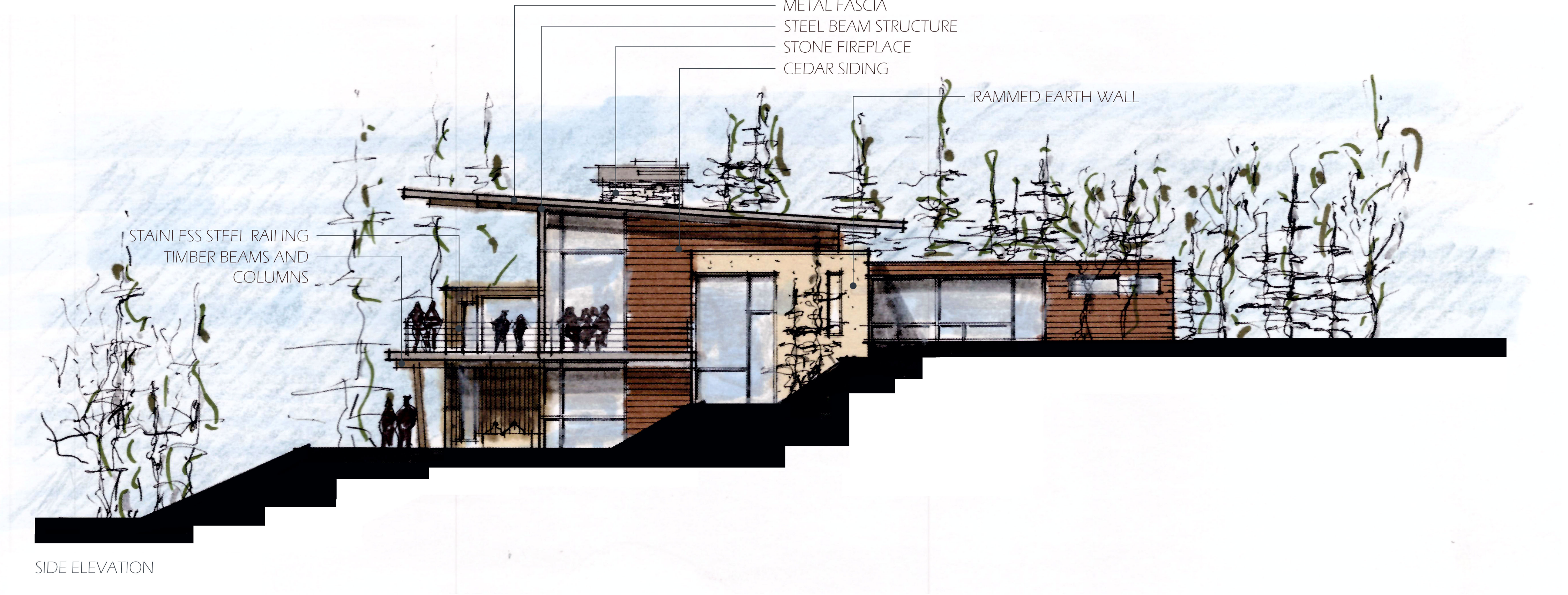
SHEET TITLE:
CABIN RESIDENCE

SHEET NUMBER:
A1.4



VIEW ELEVATION

- WOOD SCREEN
- METAL FASCIA
- METAL PANEL SIDING
- CEDAR SIDING
- METAL ARRESTOR
- STONE FIREPLACE
- METAL FASCIA
- STEEL STRUCTURE
- HEAVY TIMBER BEAMS
- CEDAR SIDING
- RAMMED EARTH WALL
- CEDAR SIDING



SIDE ELEVATION

- METAL FASCIA
- STEEL BEAM STRUCTURE
- STONE FIREPLACE
- CEDAR SIDING
- RAMMED EARTH WALL

- STAINLESS STEEL RAILING
- TIMBER BEAMS AND COLUMNS

ESTATE RESIDENCE



NOTE: THESE DRAWINGS ARE CONCEPTUAL AND THEMATIC IN NATURE. THEY ARE INTENDED TO ILLUSTRATE GENERAL DESIGN STYLE, MATERIALS AND FORMS. THEY ARE NOT FINAL BUILDING CONFIGURATIONS OR FOOTPRINTS. ALL BUILDINGS WITHIN PHASE 1 WILL FOLLOW APPROVED SUMMIT EDEN CCR'S AND DESIGN GUIDELINES.



DATE:	JANUARY 25, 2013
PROJECT:	1301
DRAWN BY:	
REVIEW BY:	
VERSION:	PRUD
REVISIONS:	

SHEET TITLE:
ESTATE RESIDENCE

SHEET NUMBER:
A1.5



DATE:	JANUARY 25, 2013
PROJECT:	1301
DRAWN BY:	
REVIEW BY:	
VERSION:	PRUD
REVISIONS:	

SHEET TITLE:
VILLAGE CORE STREETSCAPES

SHEET NUMBER:
A1.6

- METAL FASCIA & SOFFIT
- NATURAL STONE CLADDING
- STANDING SEAM ZINC ROOF
- STAINED MARINE-GRADE PLYWOOD
- STAINLESS STEEL GUARD
- RECLAIMED WOOD DECK

- STAINED RECLAIMED WOOD SIDING
- GLASS CANOPY W/ STAINLESS STEEL TIES
- GLASS GUARD
- ZINC FASCIA & SOFFIT
- CHARRED WOOD SIDING
- TENSILE FABRIC CANOPY

- GLASS OR CABLE GUARD
- RECLAIMED WOOD SIDING, SOFFIT & DECK
- COR-TEN STEEL ROOF CLADDING OVER WATER-PROOF MEMBRANE ROOF SYSTEM
- COR-TEN STEEL WALL CLADDING



EAST ELEVATION

- GALVANIZED STEEL CANOPY
- CORRUGATED METAL SIDING
- RECLAIMED BRICK
- HAND-TROWELED CEMENT PLASTER
- GLAZING
- METAL PANEL

- ARCHITECTURAL CONCRETE
- CHARRED WOOD SIDING
- ANODIZED ALUMINUM CANOPY
- STAINLESS STEEL CABLE GUARD
- SALVAGED/RE-USED BUILDING
- POWDER COATED STEEL DECK STRUCTURE

- INTERLOCKING ZINC PANEL SIDING & ROOF
- INSULATED RAMMED EARTH WALLS
- GLASS GUARD
- RETRACTABLE FABRIC CANOPY
- SAND-SET STONE PAVERS
- GLAZING

- STRUCTURAL GLAZED SYSTEM
- GLASS GUARD
- INSULATED RAMMED EARTH WALLS
- RECLAIMED WOOD SIDING, SOFFIT & DECK
- INTERLOCKING ZINC PANEL SIDING & ROOF
- GLASS OR CABLE GUARD

- SALVAGED STONE CLADDING
- SALVAGED/RE-USED BUILDING
- METAL PANEL DOOR
- POWDER COATED GUARD
- ARCHITECTURAL CONCRETE
- CHARRED WOOD SIDING

- PAVED SIDEWALK
- NATURAL STONE PATIO & STAIR
- STAINLESS STEEL GUARD
- BLACK ZINC VERTICAL SEAM PANEL
- METAL PANEL W/ GLAZED VIEWPORTS
- HAND TROWELED CEMENT PLASTER



WEST ELEVATION
 SCALE: 1:20 +/-

- NATURAL STONE PATIO
- BOARD-FORMED CONCRETE
- METAL PANEL DOOR
- STAINLESS STEEL GUARD
- GLAZING
- COR-TEN STEEL WALL CLADDING

- STAINED/RECLAIMED WOOD SIDING
- BLACK ANODIZED PERFORATED GUARD
- NATURAL STONE CLADDING
- BLACK ANODIZED METAL DOOR
- RECLAIMED BRICK & STONE
- PAINTED WOOD

- ZINC-CLAD AWNING
- STAINLESS STEEL GUARD
- STAINED MARINE-GRADE PLYWOOD
- STANDING SEAM ZINC ROOF
- ZINC PANEL
- CABLE GUARD

VILLAGE CORE STREETSCAPES



NOTE: THESE DRAWINGS ARE CONCEPTUAL AND THEMATIC IN NATURE. THEY ARE INTENDED TO ILLUSTRATE GENERAL DESIGN STYLE, MATERIALS AND FORMS. THEY ARE NOT FINAL BUILDING CONFIGURATIONS OR FOOTPRINTS. ALL BUILDINGS WITHIN PHASE 1 WILL FOLLOW APPROVED SUMMIT EDEN CCRS AND DESIGN GUIDELINES.

SOUTH



NORTH



VILLAGE CORE ROOF PLAN & SIDE ELEVATIONS



NOTE: THESE DRAWINGS ARE CONCEPTUAL AND THEMATIC IN NATURE. THEY ARE INTENDED TO ILLUSTRATE GENERAL DESIGN STYLE, MATERIALS AND FORMS. THEY ARE NOT FINAL BUILDING CONFIGURATIONS OR FOOTPRINTS. ALL BUILDINGS WITHIN PHASE 1 WILL FOLLOW APPROVED SUMMIT EDEN CCPS AND DESIGN GUIDELINES.

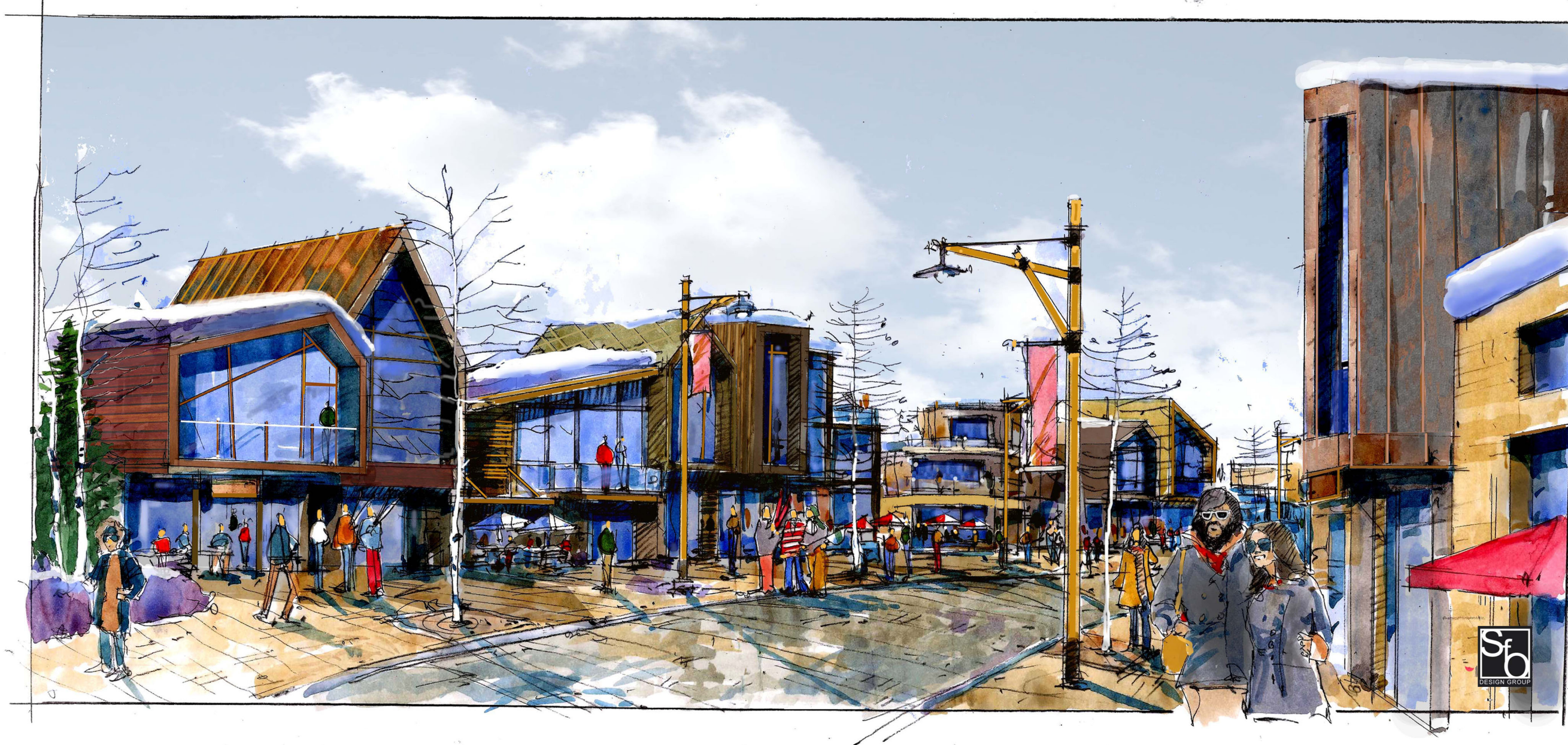


DATE:	JANUARY 25, 2013
PROJECT:	1301
DRAWN BY:	
REVIEW BY:	
VERSION:	PRUD
REVISIONS:	

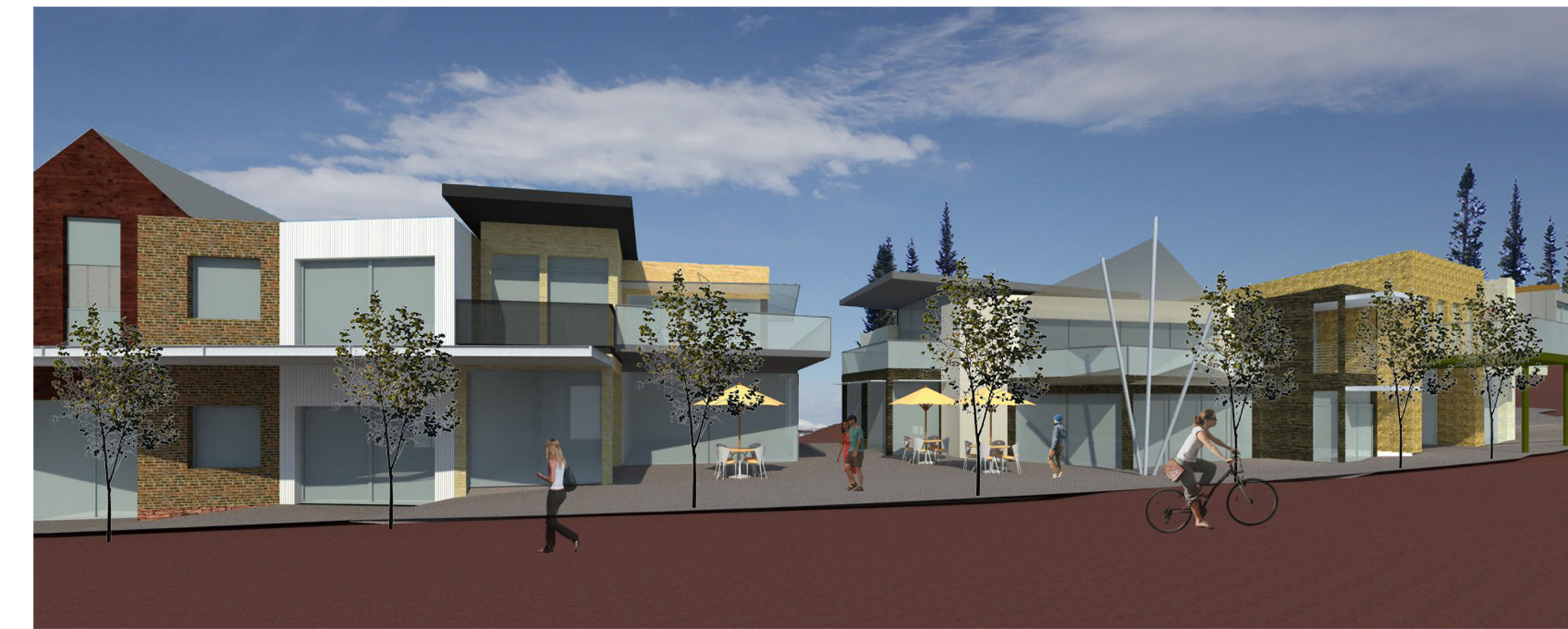
SHEET TITLE:
 VILLAGE CORE ROOF
 PLAN & SIDE ELEVATIONS

SHEET NUMBER:

A1.7



UPPER STREETScape



MID-BLOCK PLAZA



LOWER STREETScape

VILLAGE CORE VIGNETTES



NOTE: THESE DRAWINGS ARE CONCEPTUAL AND THEMATIC IN NATURE. THEY ARE INTENDED TO ILLUSTRATE GENERAL DESIGN STYLE, MATERIALS AND FORMS. THEY ARE NOT FINAL BUILDING CONFIGURATIONS OR FOOTPRINTS. ALL BUILDINGS WITHIN PHASE 1 WILL FOLLOW APPROVED SUMMIT EDEN CCR'S AND DESIGN GUIDELINES.



DATE: JANUARY 25, 2013

PROJECT: 1301

DRAWN BY:

REVIEW BY:

VERSION: PRUD

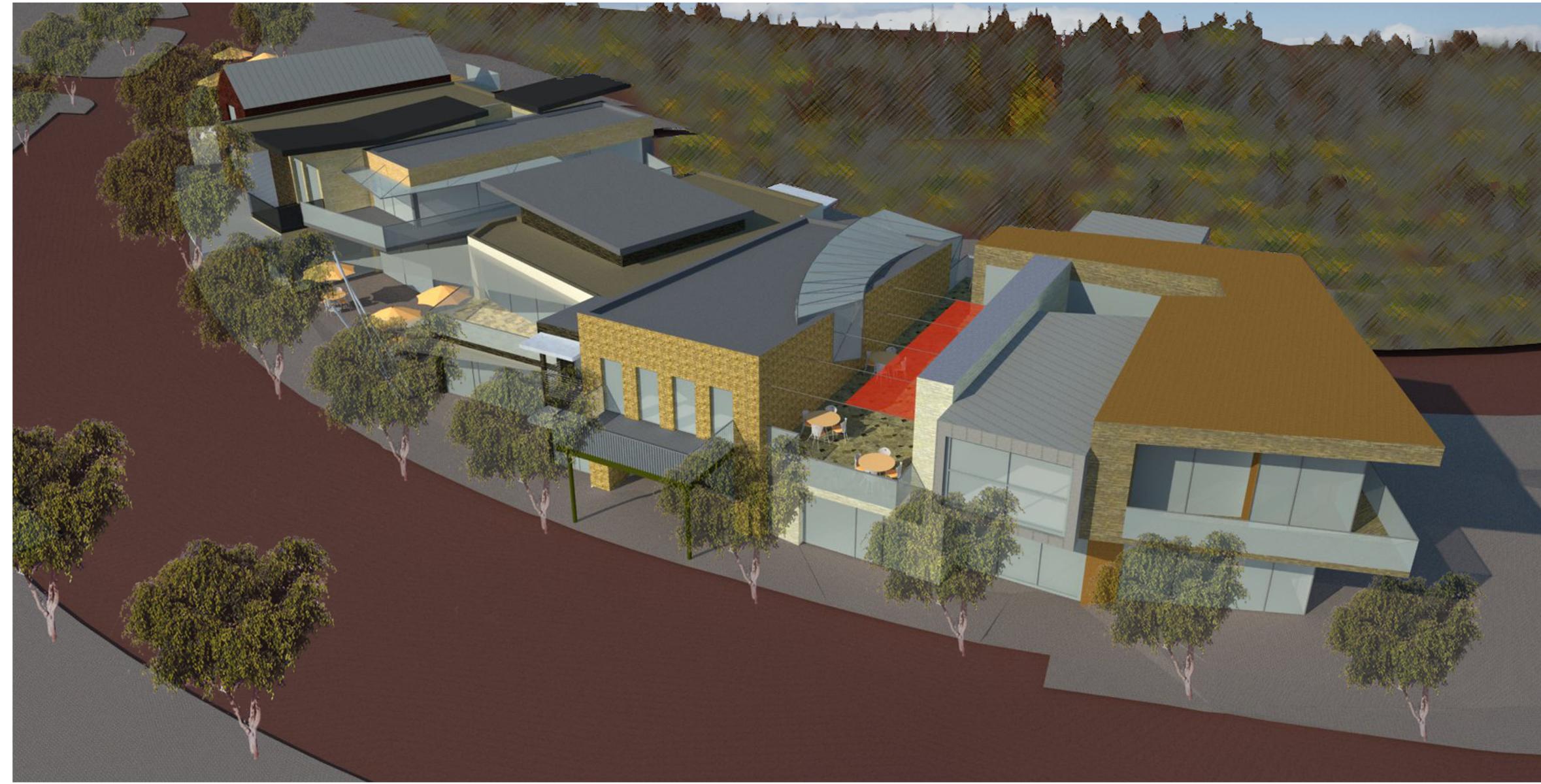
REVISIONS:

SHEET TITLE:

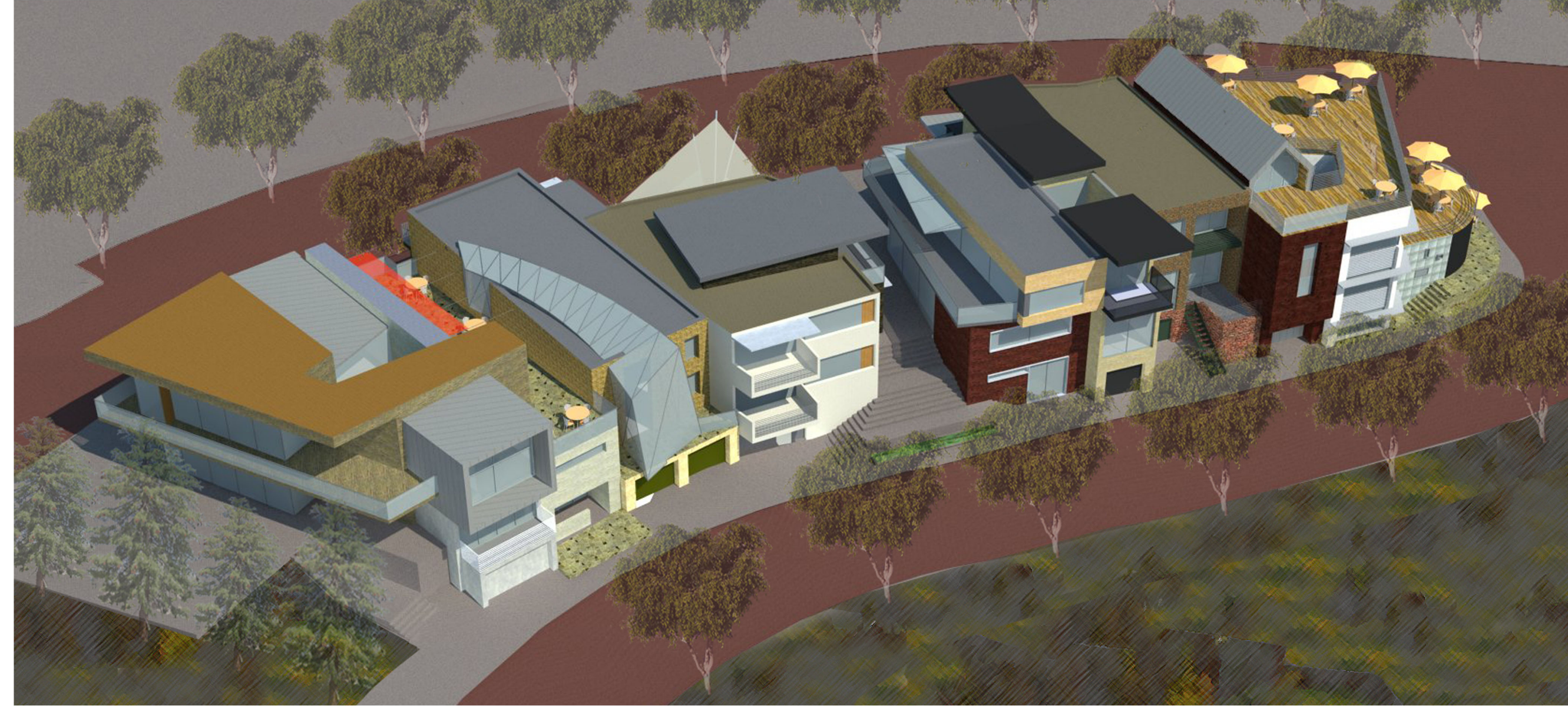
VILLAGE CORE
VIGNETTES

SHEET NUMBER:

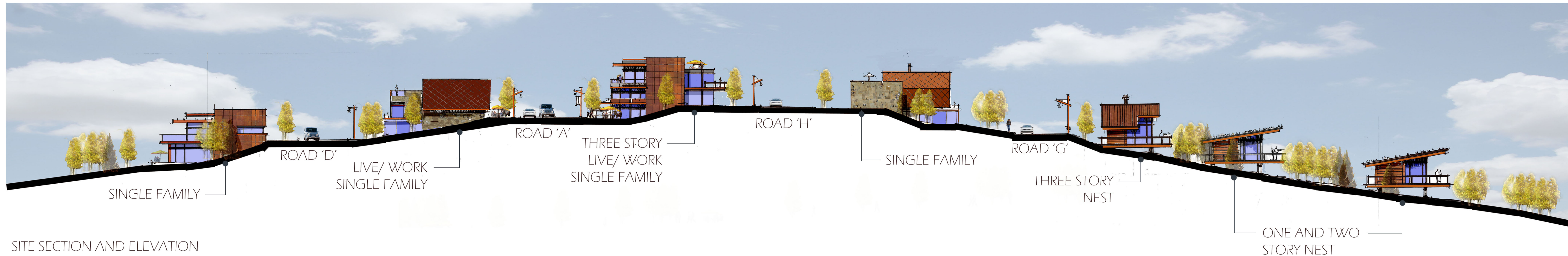
A1.8



VIEW FROM NORTHEAST



VIEW FROM NORTHWEST



SITE SECTION AND ELEVATION

VILLAGE CORE SECTION AND VIGNETTES



NOTE: THESE DRAWINGS ARE CONCEPTUAL AND THEMATIC IN NATURE. THEY ARE INTENDED TO ILLUSTRATE GENERAL DESIGN STYLE, MATERIALS AND FORMS. THEY ARE NOT FINAL BUILDING CONFIGURATIONS OR FOOTPRINTS. ALL BUILDINGS WITHIN PHASE 1 WILL FOLLOW APPROVED SUMMIT EDEN CCR'S AND DESIGN GUIDELINES.



DATE:	JANUARY 25, 2013
PROJECT:	1301
DRAWN BY:	
REVIEW BY:	
VERSION:	PRUD
REVISIONS:	

SHEET TITLE:
VILLAGE CORE SECTION
AND VIGNETTES

SHEET NUMBER:

A1.9