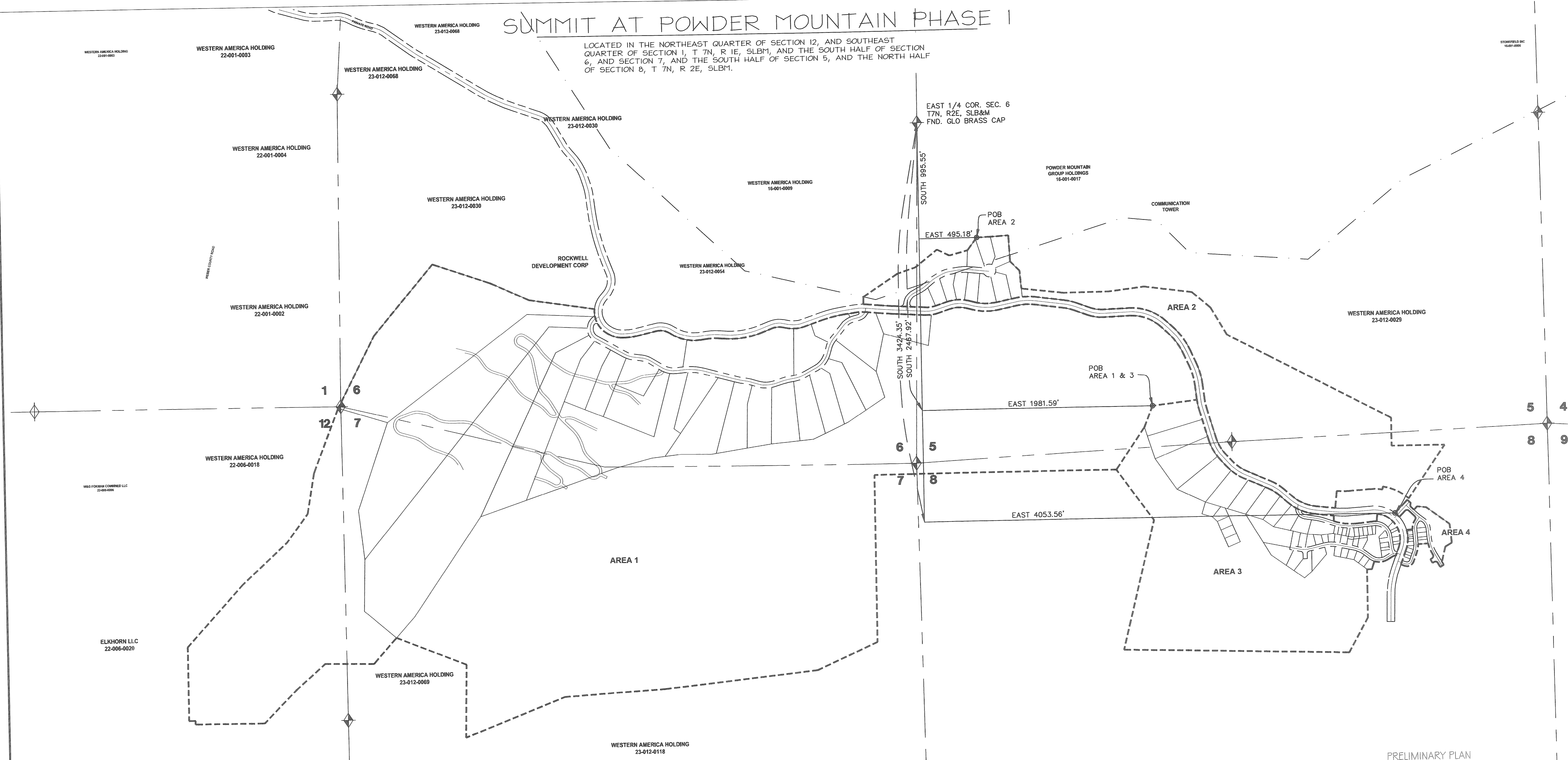
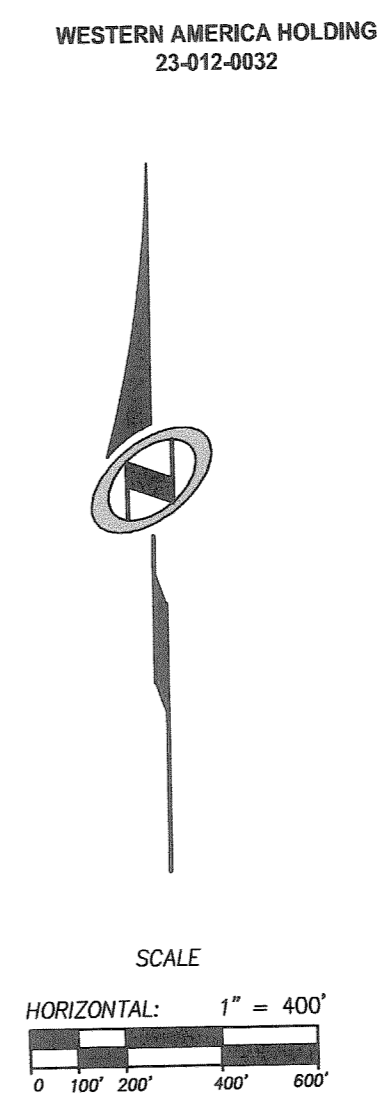


SUMMIT AT POWDER MOUNTAIN PHASE 1

LOCATED IN THE NORTHEAST QUARTER OF SECTION 12, AND SOUTHEAST QUARTER OF SECTION 1, T 7N, R 1E, SLBM, AND THE SOUTH HALF OF SECTION 6, AND SECTION 7, AND THE SOUTH HALF OF SECTION 5, AND THE NORTH HALF OF SECTION 8, T 7N, R 2E, SLBM.



- LEGEND**
- EASEMENT
 - COUNTY LINE
 - SECTION LINE
 - BOUNDARY LINE
 - PARCEL LINE
 - SECTION CORNER TIES
 - BA BUILD AREA
 - AC ACRES



PRELIMINARY PLAN
FOR REVIEW ONLY!

SUMMIT AT POWDER MOUNTAIN PHASE 1

BOUNDARY OVERVIEW

LOCATED IN THE NORTHEAST QUARTER OF SECTION 12, AND SOUTHEAST QUARTER OF SECTION 1, T 7N, R 1E, SLBM, AND THE SOUTH HALF OF SECTION 6, AND SECTION 7, AND THE SOUTH HALF OF SECTION 5, AND THE NORTH HALF OF SECTION 8, T 7N, R 2E, SLBM.

Sheet **2** of 11

N/V/5 **NOLTE VERTICALFIVE**
5217 SOUTH STATE STREET, SUITE 300 MURRAY, UT 84107
801.743.1300 TEL. 801.743.0300 FAX WWW.NOLTE.COM

RECORDED #

STATE OF UTAH, COUNTY OF WEBER, RECORDED AND FILED AT THE
REQUEST OF: _____ ENTRY NO: _____

DATE: _____ TIME: _____ BOOK: _____ PAGE: _____

FEE \$ _____ WEBER COUNTY RECORDER