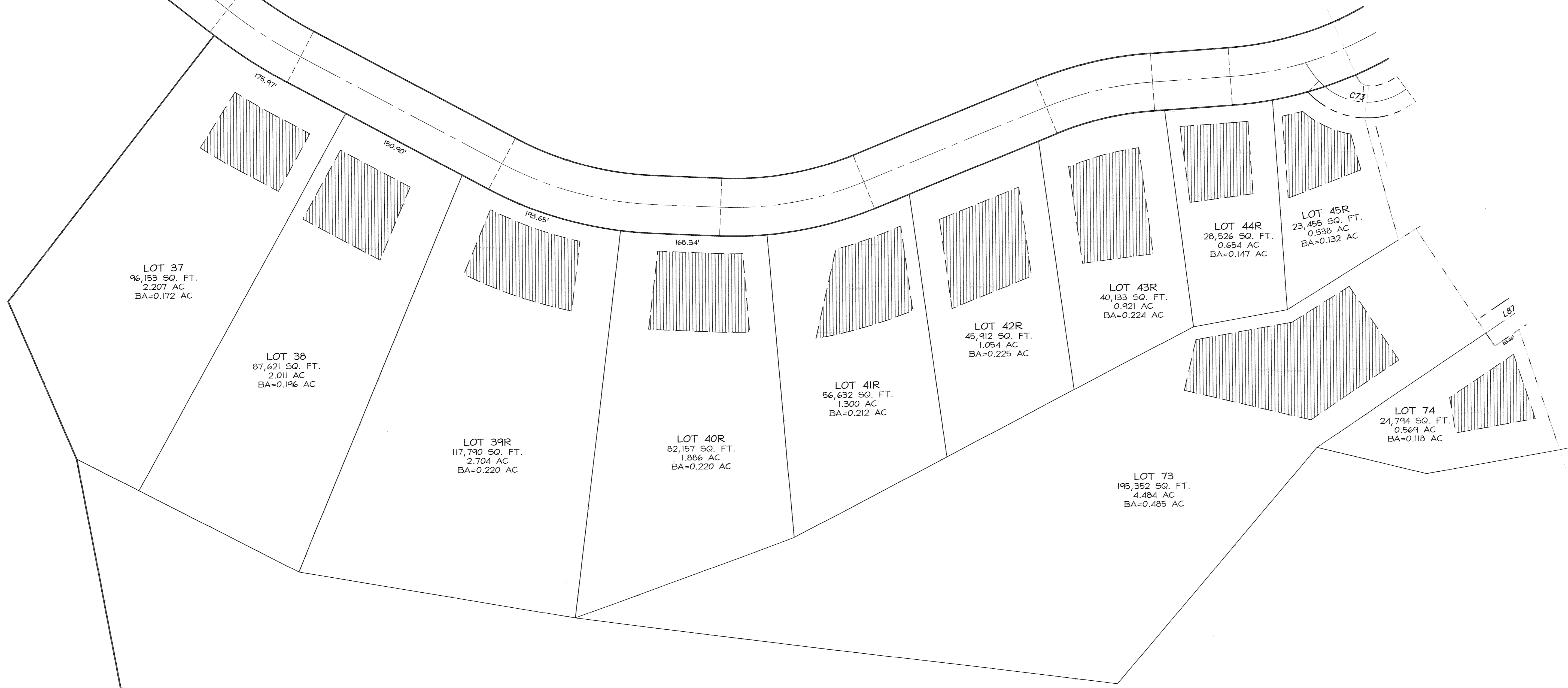


# SUMMIT AT POWDER MOUNTAIN PHASE I

LOCATED IN THE NORTHEAST QUARTER OF SECTION 12, AND SOUTHEAST QUARTER OF SECTION 1, T 7N, R 1E, SLBM, AND THE SOUTH HALF OF SECTION 6, AND SECTION 7, AND THE SOUTH HALF OF SECTION 5, AND THE NORTH HALF OF SECTION 8, T 7N, R 2E, SLBM.



PRELIMINARY PLAN  
FOR REVIEW ONLY!

## SUMMIT AT POWDER MOUNTAIN PHASE I

LOTS 37-45R, 73, 74.

LOCATED IN THE NORTHEAST QUARTER OF SECTION 12, AND SOUTHEAST QUARTER OF SECTION 1, T 7N, R 1E, SLBM, AND THE SOUTH HALF OF SECTION 6, AND SECTION 7, AND THE SOUTH HALF OF SECTION 5, AND THE NORTH HALF OF SECTION 8, T 7N, R 2E, SLBM.

Sheet 9 of 11

**NV|5** **NOLTE VERTICALFIVE**  
 5217 SOUTH STATE STREET, SUITE 300 MURRAY, UT 84107  
 801.743.1300 TEL. 801.743.0300 FAX WWW.NOLTE.COM

RECORDED #  
 STATE OF UTAH, COUNTY OF WEBER, RECORDED AND FILED AT THE  
 REQUEST OF: \_\_\_\_\_ ENTRY NO: \_\_\_\_\_  
 DATE: \_\_\_\_\_ TIME: \_\_\_\_\_ BOOK: \_\_\_\_\_ PAGE: \_\_\_\_\_  
 FEE \$ \_\_\_\_\_ WEBER COUNTY RECORDER

- LEGEND**
- RIGHT OF WAY
  - BOUNDARY LINE
  - ▨ BUILD AREA
  - ▩ EASEMENT
  - BA BUILD AREA
  - AC ACRES

