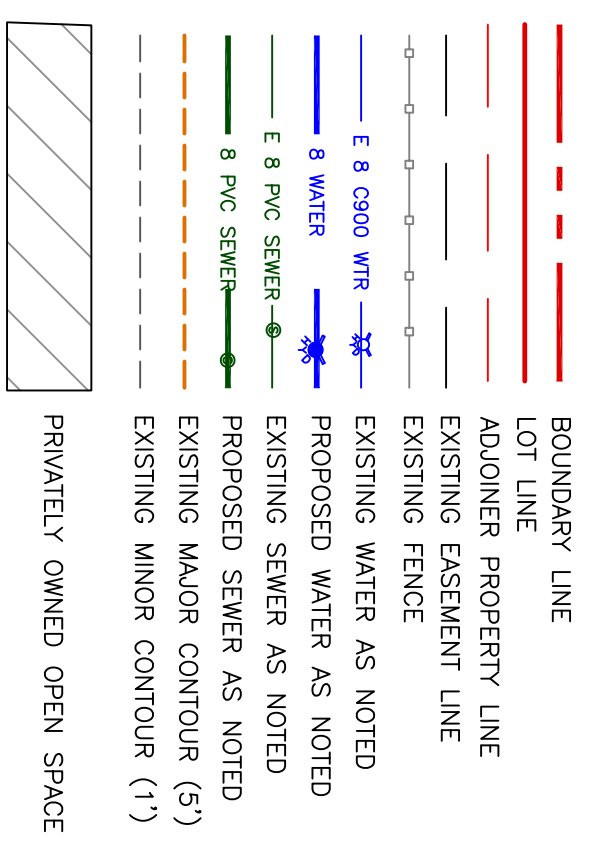


# SUNSET MEADOWS

PART OF THE NORTH HALF OF SECTION 28, TOWNSHIP 6 NORTH, RANGE 2 WEST, SALT LAKE BRISLIE AND MERIDIAN WEBER COUNTY, UTAH  
**PRELIMINARY PLAT PHASE 1&2**

SCALE: 1" = 80' (2X/34 PLAN SET)



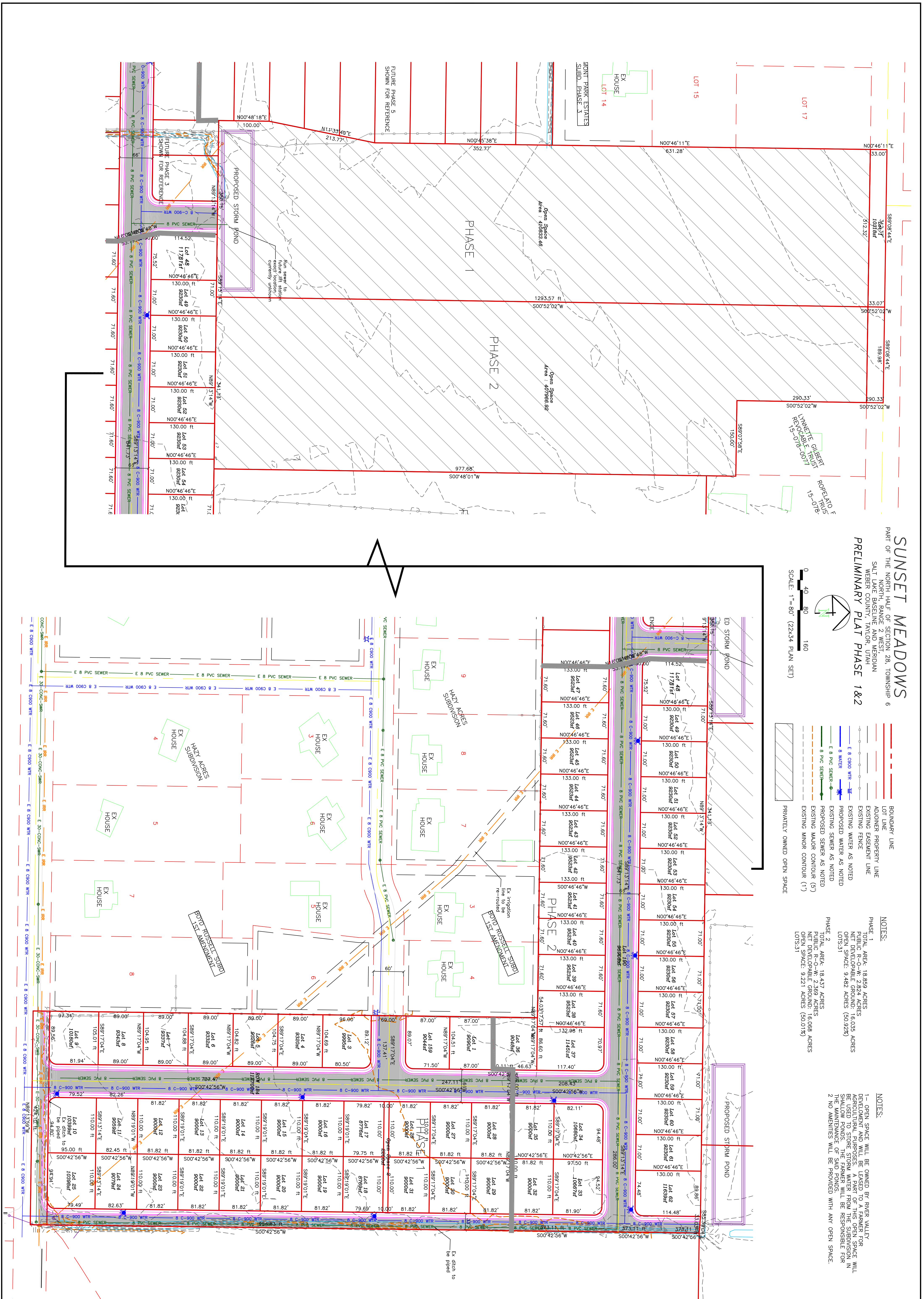
**NOTES:**

PHASE 1  
 TOTAL AREA: 18,859 ACRES  
 PUBLIC R-O-W: 2,824 ACRES  
 NET DEVELOPABLE GROUND: 16,035 ACRES  
 OPEN SPACE: 9,482 ACRES (50.82%)  
 LOTS:31

PHASE 2  
 TOTAL AREA: 18,437 ACRES  
 PUBLIC R-O-W: 2,369 ACRES  
 NET DEVELOPABLE GROUND: 16,068 ACRES  
 OPEN SPACE: 9,221 ACRES (50.01%)  
 LOTS:31

**NOTES:**

1- OPEN SPACE WILL BE OWNED BY RIVERS VALLEY DEVELOPMENT AND WILL BE RESERVED FOR AGRICULTURAL PURPOSES. A PART OF THIS OPEN SPACE WILL BE USED TO STORE STORM WATER FROM THE SUBDIVISION IN SHALLOW PONDS. THE FARMER WILL BE RESPONSIBLE FOR THE MAINTENANCE OF SAID PONDS. THE FARMER WILL BE PROVIDED WITH ANY OPEN SPACE. 2- NO ADVERTISEMENTS WILL BE PROVIDED WITH ANY OPEN SPACE.



PROJECT TITLE  
**SUNSET MEADOWS**

DRAWING TITLE  
**PRELIMINARY PLAT PHASE 1&2**

DATE: MARCH 2020  
 DRAWING NO. 2

No.	REVISIONS/ SUBMISSIONS	DATE

REVIEWED: \_\_\_\_\_ DRAWN: \_\_\_\_\_  
 CAD FILE: \_\_\_\_\_ PROJECT NO.: \_\_\_\_\_

**CONFIDENTIALITY AND COPYRIGHT NOTICE**

UNAUTHORIZED USE, DISCLOSURE, OR COPYING OF THIS DRAWING IS PROHIBITED.

CONSTRUCTION DOCUMENTS THAT ARE DISTRIBUTED FOR BIDDING PURPOSES SHALL NOT BE RETURNED AND SHALL BE DESTROYED WITHIN 30 DAYS AFTER THE BID OPENING BY THE PLAN HOLDER.

COPYRIGHT 2005

**ALLIANCE CONSULTING ENGINEERS**

150 EAST 200 NORTH SUITE P  
 LOGAN, UTAH 84321  
 (435)755-5121  
 alliancelogan@yahoo.com

REGISTERED PROFESSIONAL ENGINEER  
 NO. 38821  
 MARCH 2020  
 STATE OF UTAH