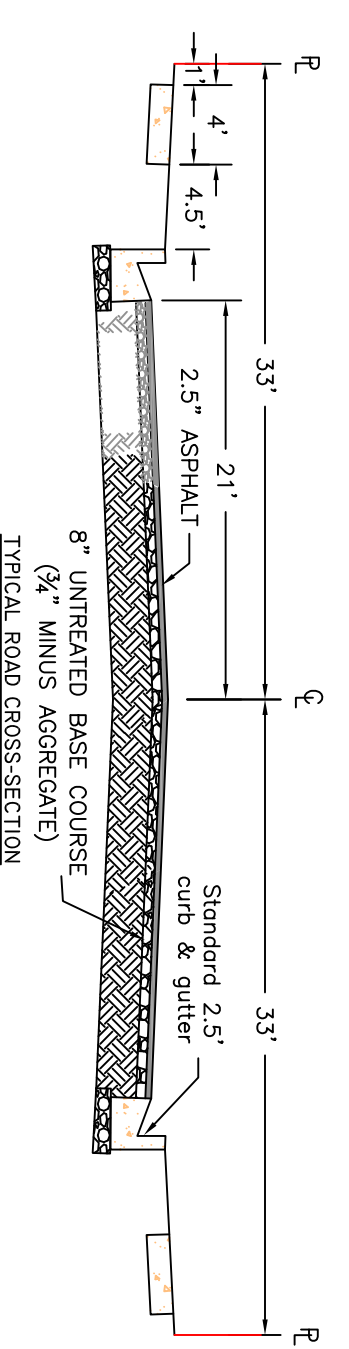
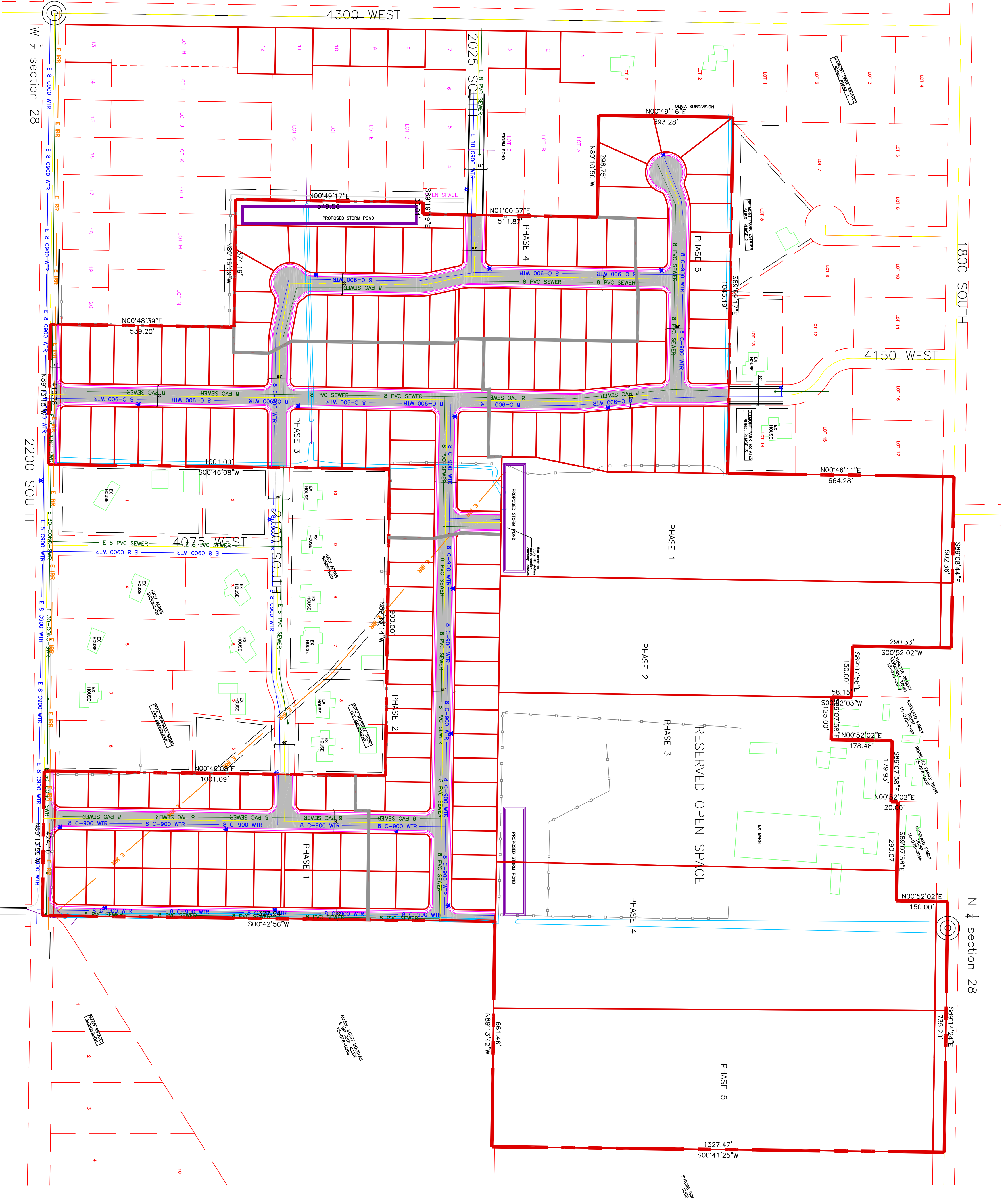
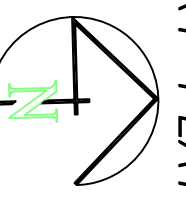
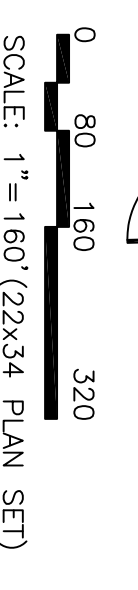


**SUNSET MEADOWS**  
 PART OF THE NORTH HALF OF SECTION 28, TOWNSHIP 6  
 NORTH, RANGE 2 WEST,  
 SALT LAKE BASIN AND MERIDIAN  
 WEBER COUNTY, TAYLOR, UTAH  
**PRELIMINARY PLAT MASTERPLAN**

- NOTES:**
- TOTAL AREA: 109.62 ACRES  
 R-O-W AREA IN 1800 SOUTH AND 2200 SOUTH: 1.57 ACRES  
 NET DEVELOPABLE GROUND: 98.96 ACRES (104 LOTS)  
 OPEN SPACE: 57.09 ACRES (62.08%)  
 LOTS: 156
  - MID BLOCK PATHWAY: 0.12 ACRES PHASES.
  - PROJECT TO BE BUILT IN MULTIPLE PHASES.  
 470 North 2450 West  
 Tremonton, Utah 84337



PROJECT TITLE  
**SUNSET MEADOWS**

DRAWING TITLE  
**PRELIMINARY PLAT MASTERPLAN**

DATE: MARCH 2020  
 DRAWING NO. 1

No.	REVISIONS/ SUBMISSIONS	DATE

REVIEWED: \_\_\_\_\_ DRAWN: \_\_\_\_\_  
 CAD FILE: \_\_\_\_\_ PROJECT NO.: \_\_\_\_\_

**CONFIDENTIALITY AND COPYRIGHT NOTICE**

UNAUTHORIZED USE, DISCLOSURE, OR COPYING OF THIS DRAWING IS PROHIBITED.

CONSTRUCTION DOCUMENTS THAT ARE DISTRIBUTED FOR BIDDING PURPOSES SHALL NOT BE RETURNED AND SHALL BE DESTROYED WITHIN 30 DAYS AFTER THE BID OPENING BY THE PLAN HOLDER.

**COPYRIGHT 2005**

**ALLIANCE CONSULTING ENGINEERS**

150 EAST 200 NORTH SUITE P  
 LOGAN, UTAH 84321  
 (435)755-5121  
 alliancelogan@yahoo.com

