



MID MOUNTAIN LODGE

HIDDEN LAKE LODGE

PROPOSED TANK SITE

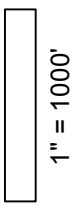
16" PIPELINE

PROPOSED WELL SITE

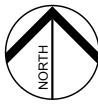
FIGURE NO:

1

SCALE:



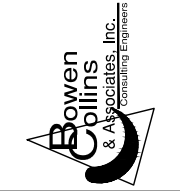
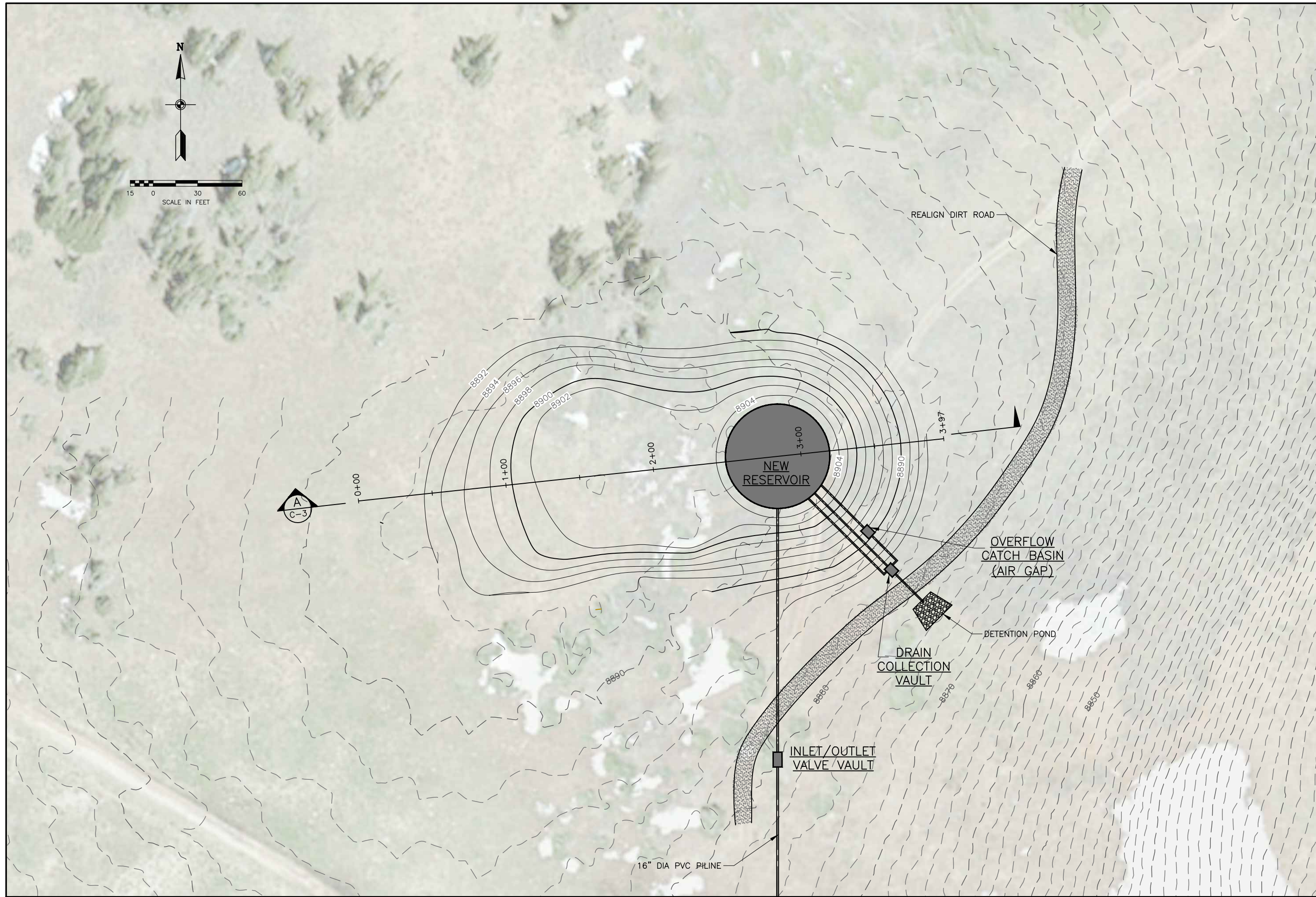
NORTH:



VICINITY MAP

SUMMIT MOUNTAIN HOLDING GROUP
POWDER MOUNTAIN TANK
AND WELL PUMP STATION

Bowen Collins
& Associates, Inc.
CONSULTING ENGINEERS



NO.	DATE	REV. BY	DESCRIPTION

VERIFY SCALE
 BAR IS ONE INCH ON ORIGINAL DRAWING

EARL'S PEAK WATER PROJECT
SUMMIT GROUP
 WEBER COUNTY, UTAH

DESIGN: J. BECKMAN
 DRAWN: R. GARCIA

REVIEW: CHECKED / APPROVED

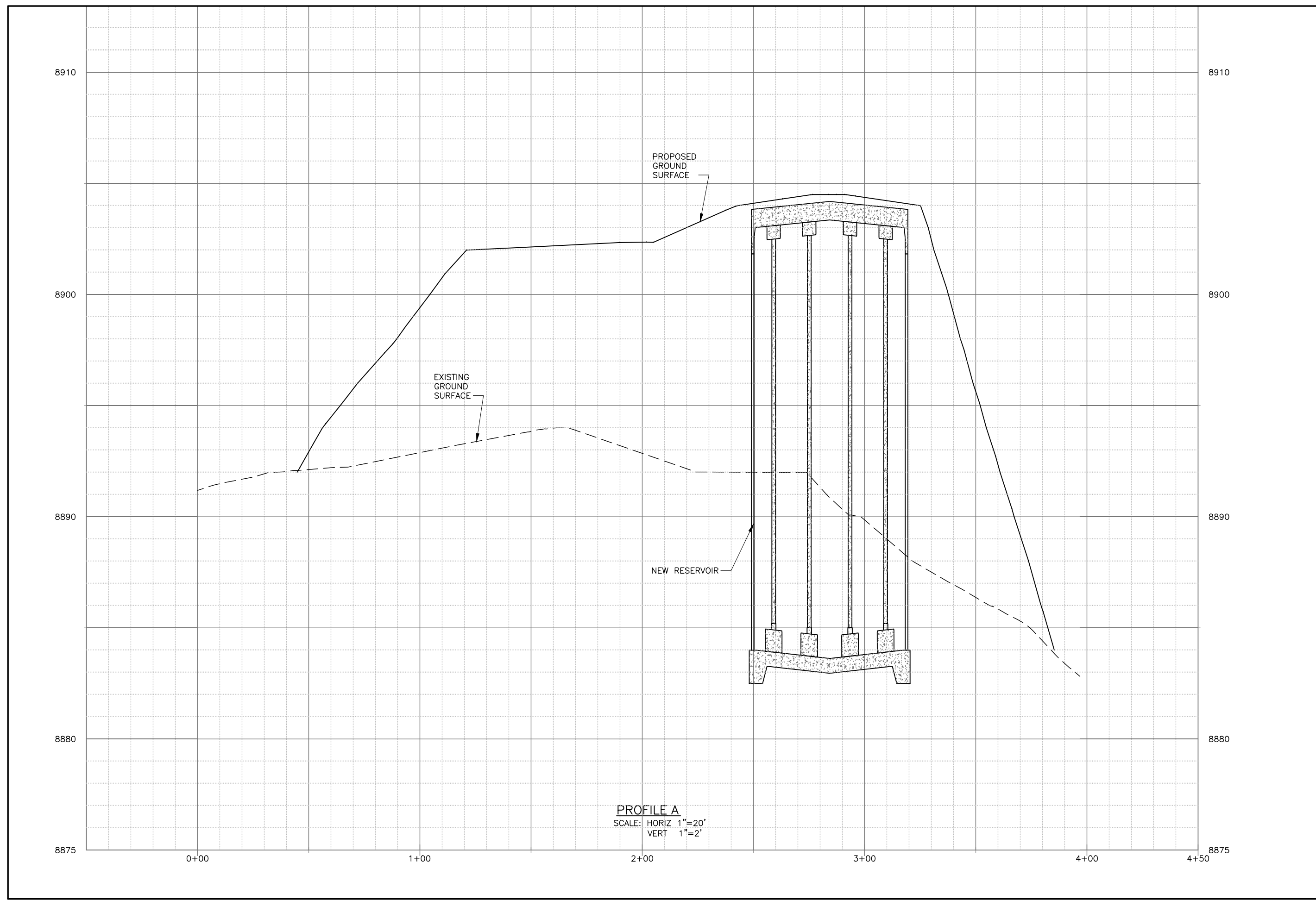
CIVIL

FINAL GRADING PLAN

DATE: JANUARY 2013 PROJECT NUMBER: 347-12-1

DRAWING NO. **C-1**

SHEET ____ OF ____



PROFILE A
 SCALE: HORIZ 1"=20'
 VERT 1"=2'

Bowen Collins & Associates, Inc.
 Consulting Engineers

EARL'S PEAK WATER PROJECT
SUMMIT GROUP
 WEBER COUNTY, UTAH

FINAL GRADING PROFILE

CIVIL

DATE: JANUARY 2013 PROJECT NUMBER: 347-12-1

DRAWING NO. **C-3**

SHEET ____ OF ____

NO.	DATE	REV. BY	DESCRIPTION

DESIGN: J. BECKMAN
 DRAWN: R. GARCIA

REVIEW: _____
 CHECKED: _____
 APPROVED: _____

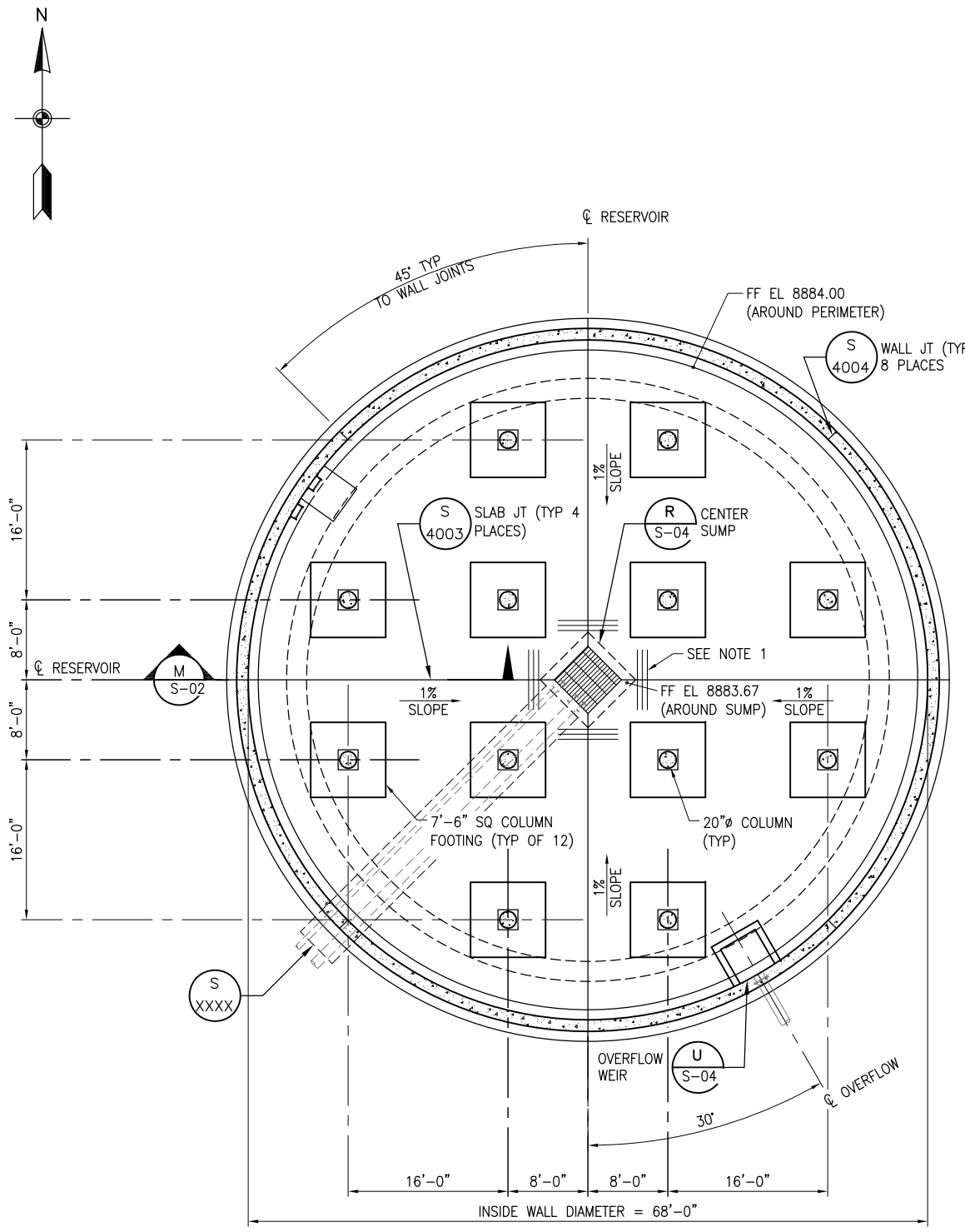
VERIFY SCALE
 BAR IS ONE INCH ON ORIGINAL DRAWING

NO.	DATE	REV. BY	DESCRIPTION

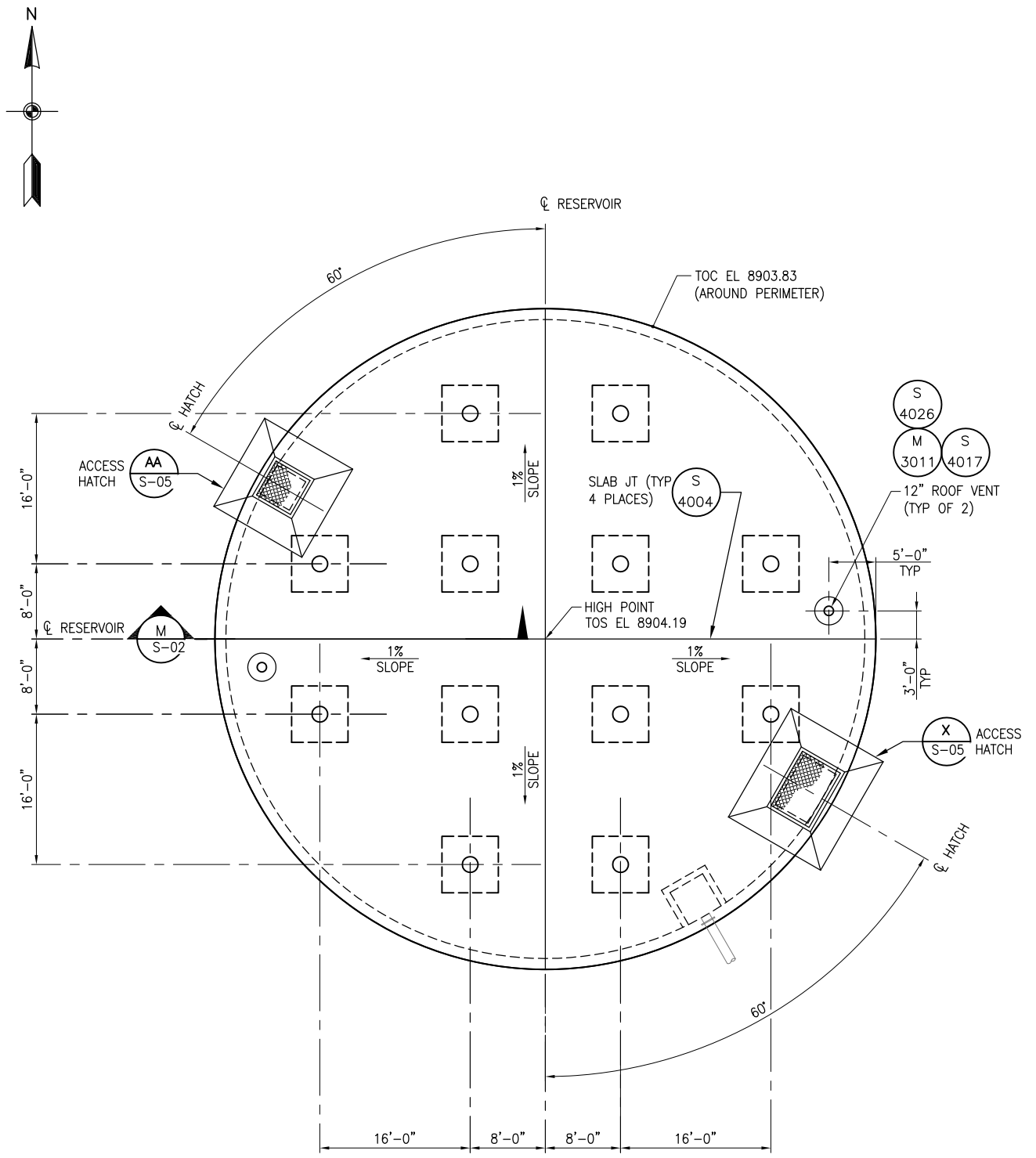
SUMMIT, LLC		WEBER COUNTY, UTAH	
EARL'S PEAK WATER PROJECT			
DESIGN	R. DAVIS	REVIEW	CHECKED
DESIGN	R. DAVIS	REVIEW	APPROVED

STRUCTURAL	PROJECT NUMBER
RESERVOIR AND FOUNDATION ROOF PLAN	347-12-01
DATE: JANUARY, 2013	

DRAWING NO.	FIGURE 2
SHEET	OF XX



ROOF PLAN
SCALE: 1/8"=1'-0"



FOUNDATION PLAN
SCALE: 1/8"=1'-0"

- NOTES:
- PROVIDE 3-#5 x 6'-0" LG DIAGONAL BARS AT 6" SPACING IN EACH FACE OF BASE SLAB AT RE-ENTRANT CORNERS.

30% REVIEW

NO.	DATE	REV. BY	DESCRIPTION

VERIFY SCALE
BAR IS ONE INCH ON ORIGINAL DRAWING

EARL'S PEAK WATER PROJECT
WEBER COUNTY, UTAH

SUMMIT, LLC

DESIGN: R. DAVIS
CHECKED: R. DAVIS
APPROVED: R. DAVIS

STRUCTURAL

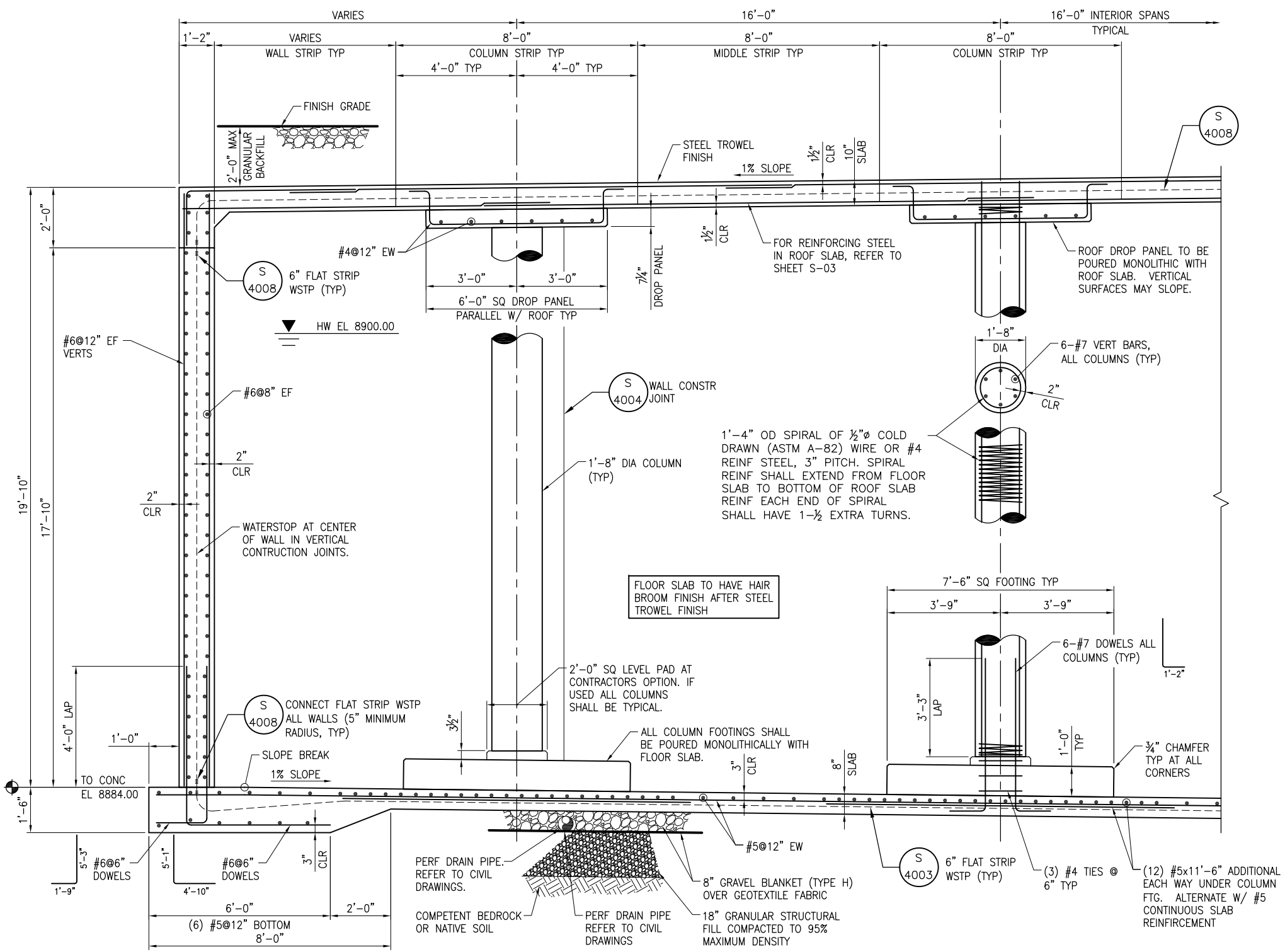
RESERVOIR SECTION

PROJECT 347-12-01
NUMBER

DATE: JANUARY, 2013

DRAWING NO. **FIGURE 3**

SHEET OF **XX**



RESERVOIR SECTION
SCALE: 1/2"=1'-0"
M
S-01

RESERVOIR GENERAL NOTES:

- ROOF SLAB DESIGNED FOR A SUPERIMPOSED SOIL DEAD LOAD OF 250 PSF PLUS 280 PSF SNOW PLUS 120 PSF LIVE LOAD.
- ALL STRUCTURAL CONCRETE SHALL DEVELOP A MINIMUM COMPRESSIVE STRENGTH OF 4500 PSI AT 28 DAYS.
- ALL REINFORCEMENT STEEL SHALL BE ASTM DESIGNATION A615 GRADE 60.
- COVERAGE FOR REINFORCING BARS, EXCEPT WHERE OTHERWISE SHOWN, SHALL BE: 3" FOR COLUMNS AND CONCRETE PLACED AGAINST GROUND; 2" FOR INTERIOR WALL SURFACES EXPOSED TO WATER AND EXTERIOR WALL SURFACES WHICH ARE FORMED AND BACKFILLED; 1 1/2" FOR TOP AND BOTTOM OF ROOF SLABS.
- LAPS FOR REINFORCING BARS, EXCEPT WHERE OTHERWISE SHOWN OR NOTED, SHALL BE CLASS B SPLICES. LAPS IN HORIZONTAL STEEL SHALL BE STAGGERED UNLESS SHOWN OTHERWISE.
- DOWELS, PIPES, WATERSTOPS AND OTHER INSTALLED MATERIALS OR ACCESSORIES SHALL BE HELD SECURELY IN POSITION WHICH CONCRETE IS BEING PLACED.
- DESIGN: INTERNATIONAL BUILDING CODE (2006), AMERICAN CONCRETE INSTITUTE (ACI 318-05), (ACI 350-06) AND (ACI 350.3-06).
- ALL KEYWAYS AND CONSTRUCTION JOINTS IN CONCRETE SHALL BE CLEANED FOR BOND. CONSTRUCTION JOINTS BETWEEN FOOTINGS AND WALLS SHALL BE COVERED WITH POLYETHYLENE-COATED BURLAP MATS WHICH SHALL BE KEPT WET WITH WATER UNTIL CONCRETE IN WALLS IS PLACED. NO CURING COMPOUND SHALL BE APPLIED IN CONSTRUCTION JOINTS BETWEEN FOOTINGS AND WALLS.
- REINFORCING BARS AND ACCESSORIES SHALL NOT BE IN CONTACT WITH ANY PIPE, PIPE FLANGE OR METAL PART EMBEDDED IN CONCRETE. A MINIMUM OF 2" CLEARANCE SHALL BE PROVIDED IN ALL CASES, UNLESS OTHERWISE SHOWN.
- FOOTINGS ARE DESIGNED FOR A NET SOILS PRESSURE OF 4200 PSF MAX. FOR DEAD LOAD PLUS LIVE LOAD, PER SOILS INVESTIGATION RECOMMENDATIONS BY IGES (PROJECT NO. 01628-003 DATED NOVEMBER 9, 2012).
- ALL ROOF OPENING DIMENSIONS ARE GIVEN TO THE CENTERLINE OF THE OPENING.
- FOR ROOF SLAB REINFORCEMENT, SEE SHEET S-3.
- TOP AND BOTTOM RING FOOTING TRANSVERSE BARS SHALL BE PLACED RADIALLY TO THE CENTER OF THE RESERVOIR.

WATERSTOP NOTES:

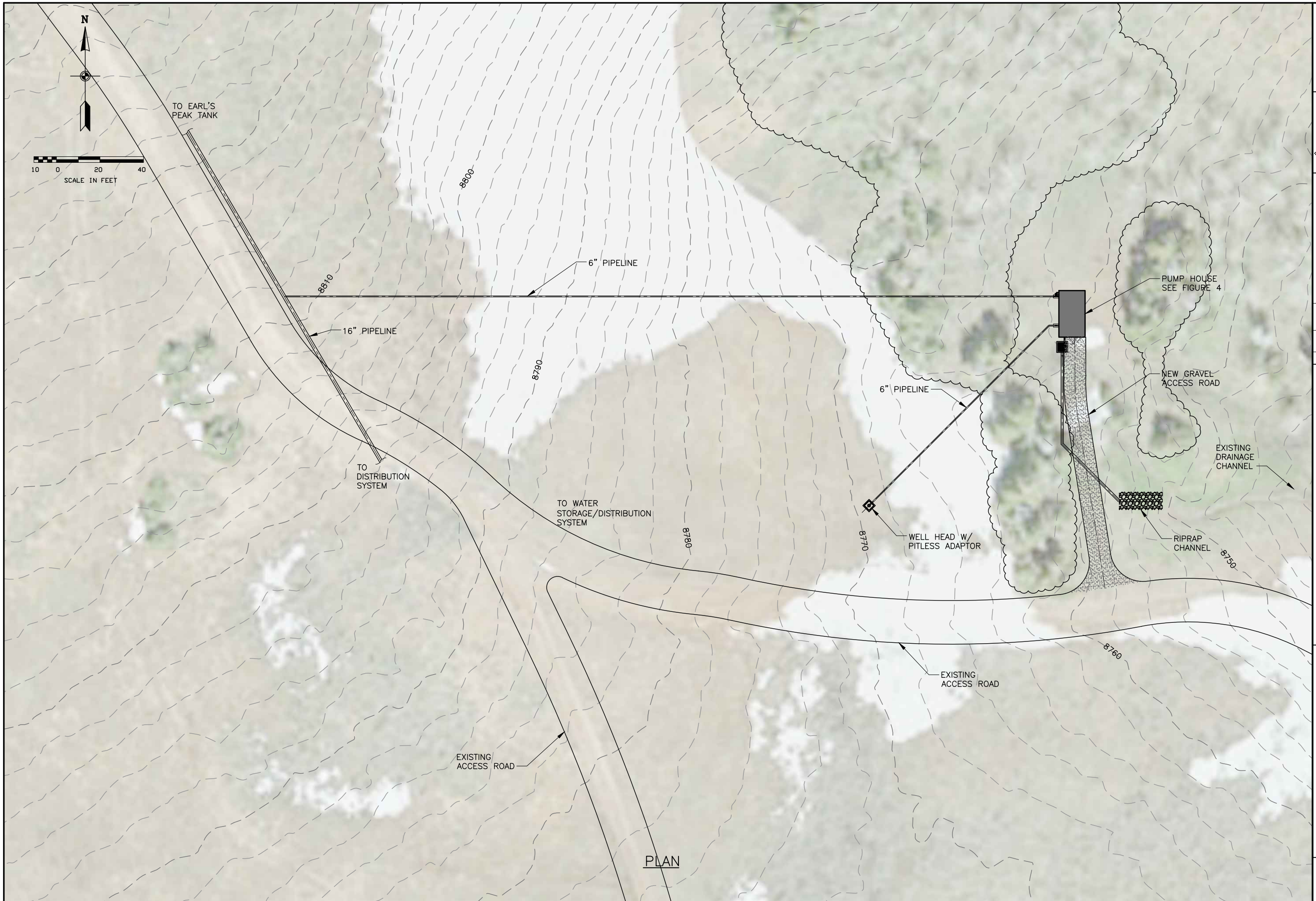
- AT ALL SLAB CONSTRUCTION JOINTS, CONCRETE SHALL BE WORKED UNDER WATERSTOPS BY HAND, MAKING SURE THAT ALL AIR AND ROCK POCKETS ARE REMOVED.



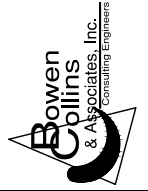
EXISTING TANK SITE (1 of 2)



EXISTING TANK SITE (2 of 2)



PLAN



30% REVIEW

NO.	DATE	REV. BY	DESCRIPTION

EARL'S PEAK WATER PROJECT
SUMMIT GROUP
 WEBER COUNTY, UTAH

VERIFY SCALE
 BAR IS ONE INCH ON ORIGINAL DRAWING

DESIGN	REVIEW	APPROVED
DESIGN R. OBERG	CHECKED	
DRAWN R. GARCIA	APPROVED	

WELL PUMP STATION SITE PLAN

DATE: JANUARY 2013 PROJECT NUMBER 347-12-1

DRAWING NO. **C-2**

SHEET ___ OF ___

30% REVIEW

NO.	DATE	REV. BY	DESCRIPTION

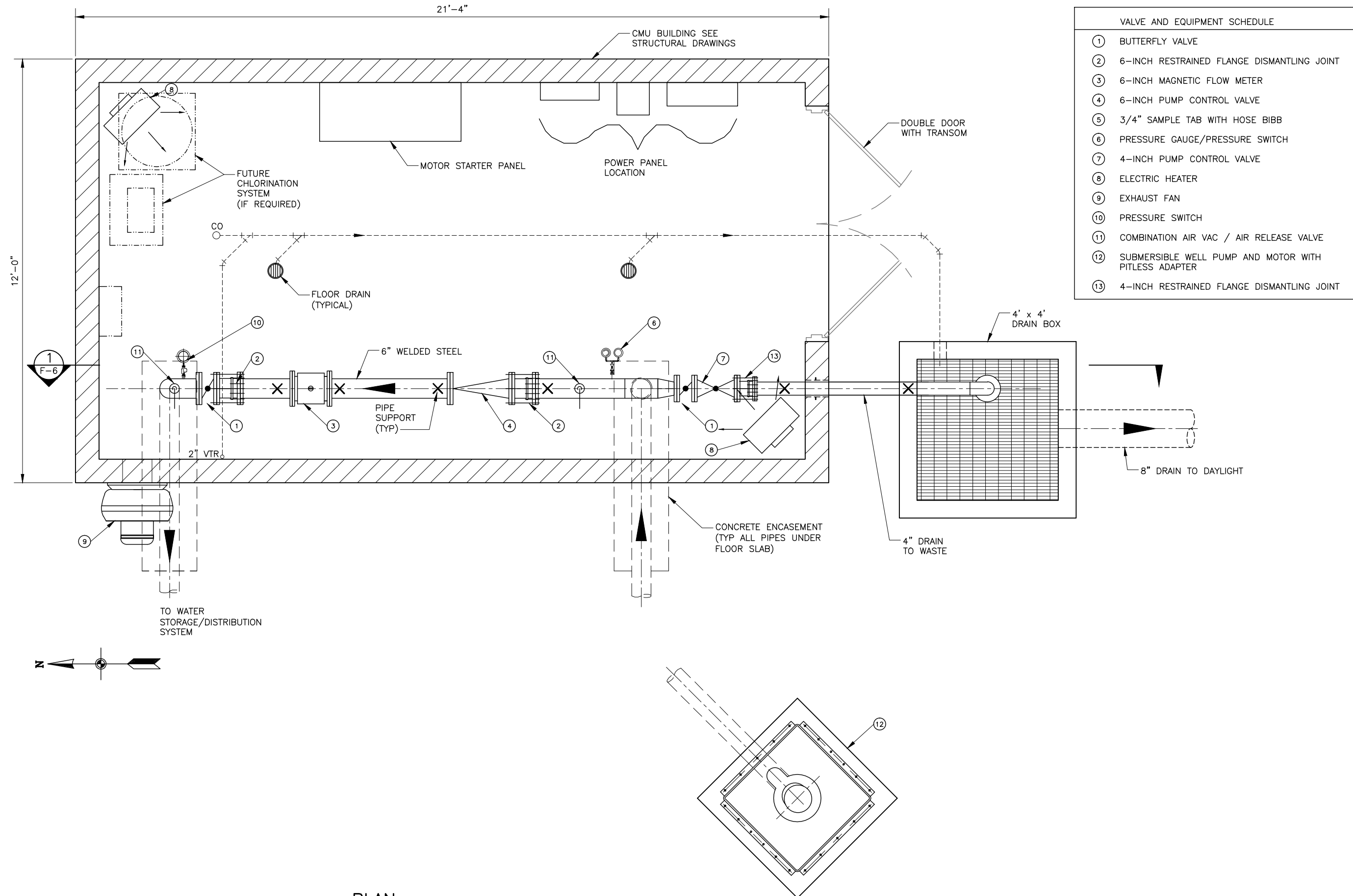
VERIFY SCALE
 BAR IS ONE INCH ON ORIGINAL DRAWING

EARL'S PEAK WATER PROJECT
SUMMIT GROUP
 WEBER COUNTY, UTAH

DESIGN: R. OBERG
 DRAWN: R. GARCIA

MECHANICAL
WELL PUMP STATION
 DATE: JANUARY 2013
 PROJECT NUMBER: 347-12-1

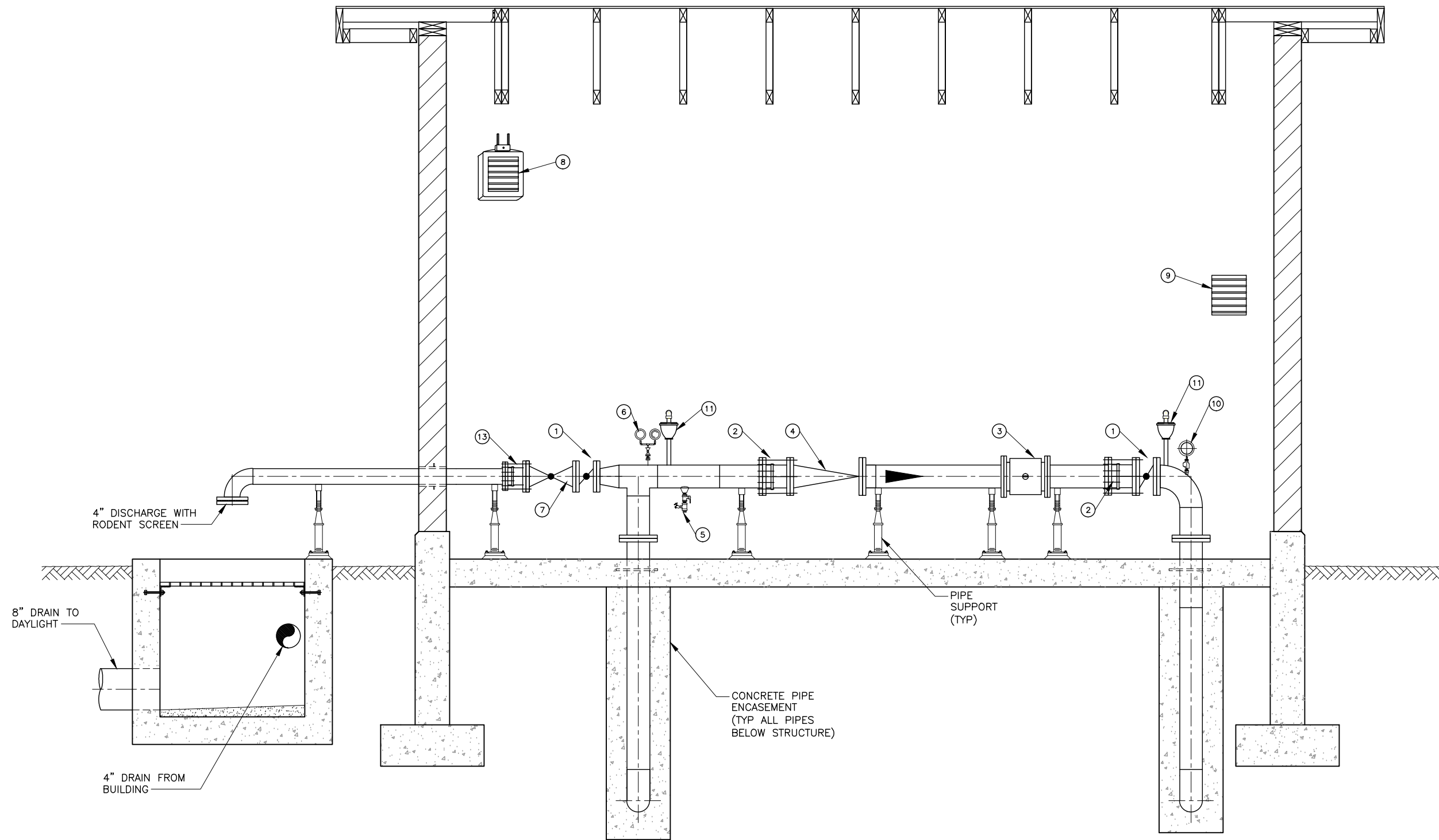
DRAWING NO.
FIGURE-5
 SHEET ____ OF ____



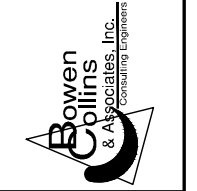
VALVE AND EQUIPMENT SCHEDULE

- ① BUTTERFLY VALVE
- ② 6-INCH RESTRAINED FLANGE DISMANTLING JOINT
- ③ 6-INCH MAGNETIC FLOW METER
- ④ 6-INCH PUMP CONTROL VALVE
- ⑤ 3/4" SAMPLE TAB WITH HOSE BIBB
- ⑥ PRESSURE GAUGE/PRESSURE SWITCH
- ⑦ 4-INCH PUMP CONTROL VALVE
- ⑧ ELECTRIC HEATER
- ⑨ EXHAUST FAN
- ⑩ PRESSURE SWITCH
- ⑪ COMBINATION AIR VAC / AIR RELEASE VALVE
- ⑫ SUBMERSIBLE WELL PUMP AND MOTOR WITH PITLESS ADAPTER
- ⑬ 4-INCH RESTRAINED FLANGE DISMANTLING JOINT

PLAN
 SCALE: 3/4"=1'-0"



SECTION 1
 SCALE: 3/4" = 1'-0"
 F-5



30% REVIEW

NO.	DATE	REV. BY	DESCRIPTION

EARL'S PEAK WATER PROJECT
 SUMMIT GROUP
 WEBER COUNTY, UTAH

VERIFY SCALE
 BAR IS ONE INCH ON ORIGINAL DRAWING

DESIGN R. OBERG
 DRAWN R. GARCIA

REVIEW
 CHECKED
 APPROVED

MECHANICAL
 WELL PUMP STATION

DATE: JANUARY 2013
 PROJECT NUMBER 347-12-1

DRAWING NO.
 FIGURE-6
 SHEET ___ OF ___



PHOTO OF SIMILAR TYPE BUILDING