

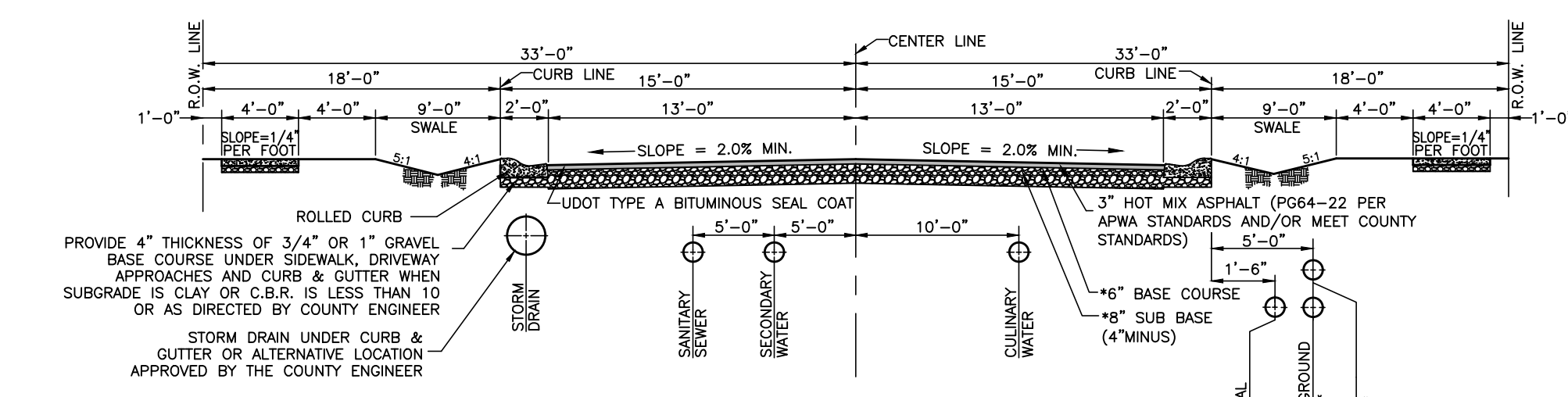
VICINITY MAP
SCALE: NONE

LEGEND

- SECTION CORNER
- BOUNDARY LINE
- LOT LINE
- - - ADJOINING PROPERTY
- - - EASEMENTS
- - - SECTION TIE LINE
- SS- PROPOSED SANITARY SEWER LINE
- EX.SS- EXISTING SANITARY SEWER LINE
- IRR- PROPOSED IRRIGATION WATER LINE
- EX.IRR- EXISTING IRRIGATION WATER LINE (SIZE VARIES)
- W- PROPOSED CULINARY WATER LINE (SIZE VARIES)
- EX.W- EXISTING CULINARY WATER LINE
- X- EXISTING FENCE LINE
- EXISTING STRUCTURE
- PROPOSED FIRE HYDRANT
- EXISTING FIRE HYDRANT
- PROPOSED SANITARY SEWER MANHOLE
- EXISTING MANHOLE
- PLUG W/ 2" BLOW-OFF
- AIR-VAC ASSEMBLY
- EXISTING POWER POLE
- PP P.U.E. = PUBLIC UTILITY EASEMENT
- FH = FIRE HYDRANT

CURVE TABLE

#	RADIUS	ARC LENGTH	CHD LENGTH	TANGENT	CHD BEARING	DELTA
C1	333.00'	144.89'	143.75'	73.61'	S76°51'54"E	24°55'49"
C2	300.00'	130.53'	129.51'	66.32'	S76°51'54"E	24°55'49"
C3	267.00'	27.75'	27.73'	13.89'	S86°21'11"E	5°57'15"
C4	267.00'	88.43'	88.03'	44.62'	S73°53'17"E	18°58'34"
C5	333.00'	111.53'	111.01'	56.29'	S73°59'41"E	19°11'23"
C6	333.00'	32.60'	32.58'	16.31'	S86°23'38"E	5°36'30"
C7	300.00'	129.84'	128.83'	65.95'	S76°47'56"E	24°47'53"
C8	267.00'	115.56'	114.66'	58.70'	S76°47'56"E	24°47'53"
C9	30.00'	22.08'	21.58'	11.57'	S21°53'10"W	42°10'06"
C10	55.00'	126.87'	100.56'	124.02'	S23°06'50"E	132°10'06"
C11	55.00'	126.87'	100.56'	124.02'	N24°43'04"E	132°10'06"
C12	30.00'	22.08'	21.58'	11.57'	N20°16'56"W	42°10'06"



Street Section (66' R.O.W.)
SCALE: NONE
*VERIFY LOCATION WITH PHONE, GAS AND POWER COMPANIES.

NORTH QUARTER CORNER OF SECTION 29, TOWNSHIP 6 NORTH, RANGE 2 WEST, SALT LAKE BASE AND MERIDIAN, U.S. SURVEY, FOUND WEBER COUNTY SURVEY BRASS CAP MONUMENT STAMPED 1960

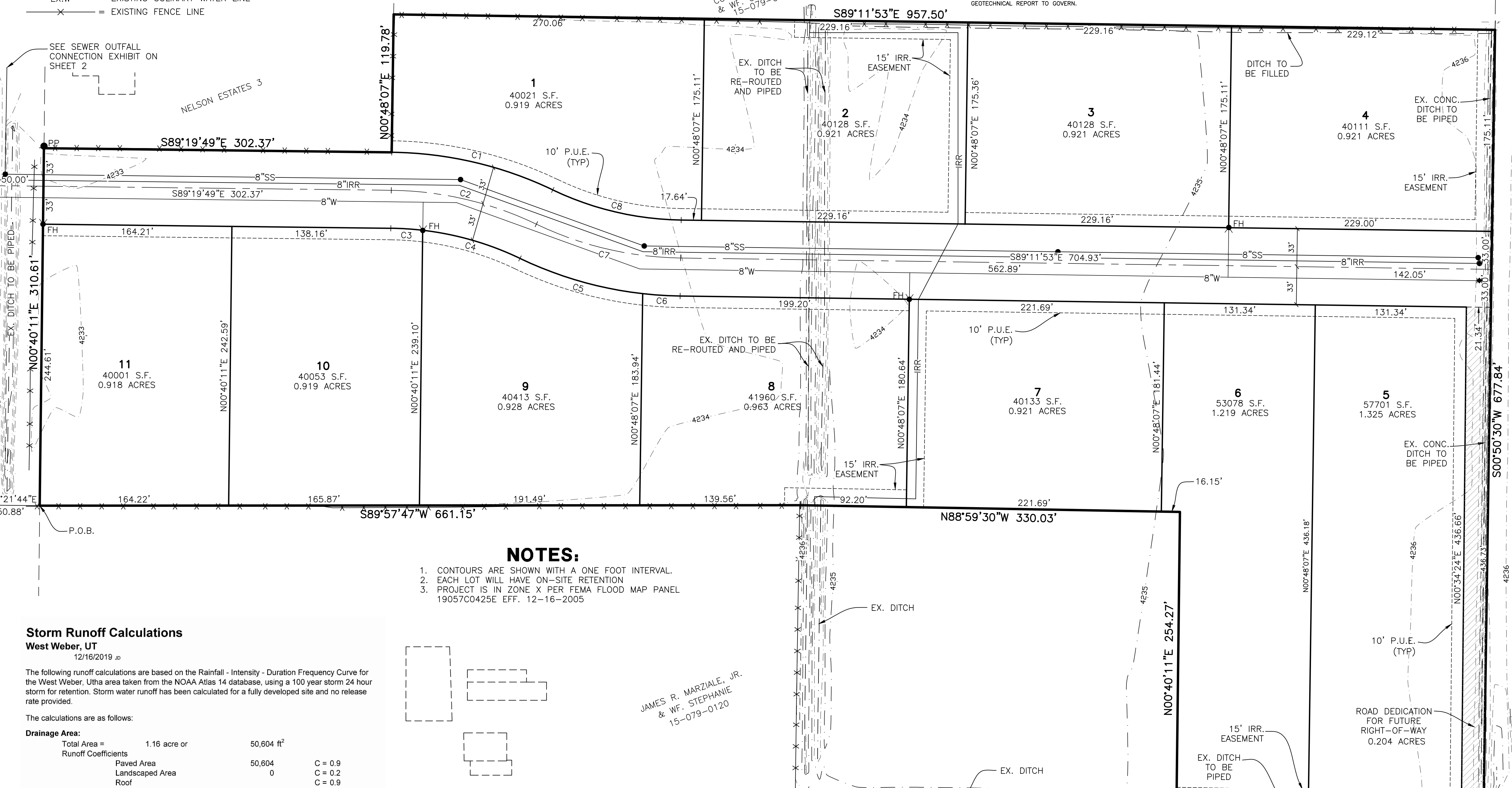
SEE SEWER OUTFALL CONNECTION EXHIBIT ON SHEET 2

NELSON ESTATES 3

CONN. L. FAMILIAR & W.F. CHRISTINE A. 15-079-0091

JAMES R. MARZIALE, JR. & W.F. STEPHANE 15-079-0120

JUSKO, LENA M TRUSTEE 15-079-0002



- NOTES:**
1. CONTOURS ARE SHOWN WITH A ONE FOOT INTERVAL.
 2. EACH LOT WILL HAVE ON-SITE RETENTION
 3. PROJECT IS IN ZONE X PER FEMA FLOOD MAP PANEL 19057C0425E EFF. 12-16-2005

Storm Runoff Calculations
West Weber, UT
12/16/2019

The following runoff calculations are based on the Rainfall - Intensity - Duration Frequency Curve for the West Weber, Utah area taken from the NOAA Atlas 14 database, using a 100 year storm 24 hour storm for retention. Storm water runoff has been calculated for a fully developed site and no release rate provided.

The calculations are as follows:

Drainage Area:
Total Area = 1.16 acre or 50,604 ft²

Runoff Coefficients	Area	C
Paved Area	50,604	C = 0.9
Landscaped Area	0	C = 0.2
Roof	0	C = 0.9
Weighted Runoff Coefficient		C = 0.56

Volume of Run-off for 100-year Storm Event:

time (min)	time (sec)	i (in./hr.)	Q (cfs)	Vol. in (cf)	Vol. out (cf)	Difference (cf)
0	0	0.00	0.00	0	0	0
5	300	6.5	4.25	1275	0	1275
10	600	4.95	3.24	1941	0	1941
15	900	4.09	2.67	2406	0	2406
30	1800	2.75	1.80	3235	0	3235
60	3600	1.7	1.11	4000	0	4000
120	7200	0.928	0.61	4367	0	4367
180	10800	0.633	0.41	4469	0	4469
360	21600	0.353	0.23	4984	0	4984
720	43200	0.215	0.14	6071	0	6071
1440	86400	0.119	0.08	6720	0	6720

SUMMARY:
The required storage volume is **6,720** cubic feet

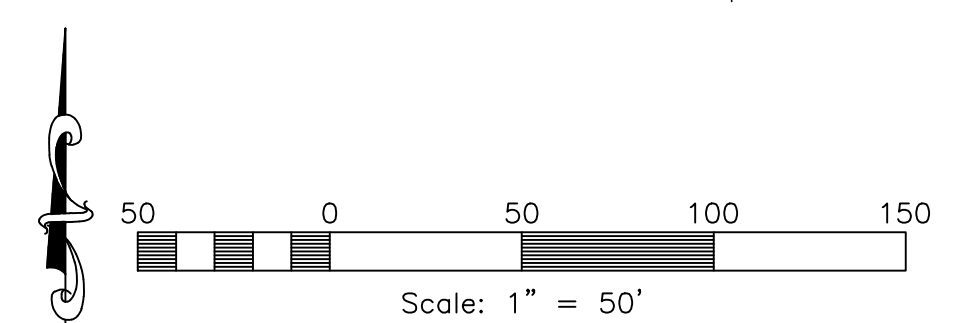
BOUNDARY DESCRIPTION

PART OF THE SOUTHEAST QUARTER OF SECTION 29, TOWNSHIP 6 NORTH, RANGE 2 WEST, SALT LAKE BASE & MERIDIAN, U.S. SURVEY, MORE PARTICULARLY DESCRIBED AS FOLLOWS:

BEGINNING AT A POINT WEST RIGHT-OF-WAY LINE OF 4700 WEST STREET, SAID POINT BEING N00°38'16"E 1579.30 FEET AND S89°21'44"E 50.88 FEET FROM THE SOUTH QUARTER CORNER OF SAID SECTION 29; THENCE N00°40'11"E 310.61 FEET; THENCE S89°19'49"E 302.37 FEET; THENCE N00°48'07"E 119.78 FEET; THENCE S89°11'53"E 957.50 FEET; THENCE S00°50'30"W 677.84 FEET; THENCE N88°59'30"W 266.99 FEET; THENCE N00°40'11"E 254.27 FEET; THENCE N88°59'30"W 330.03 FEET; THENCE S89°57'47"W 661.15 FEET TO THE POINT OF BEGINNING, CONTAINING 566265 SQUARE FEET OR 13.000 ACRES MORE OR LESS

DESIGN SPECS

AVERAGE LOT SIZE: 43,473 S.F.
AVERAGE FRONTAGE: 199.41 FT.



Kastle Acres

Weber County, Utah

Reeve & Associates, Inc.
5160 S. 1500 W., RIVERDALE, UTAH 84405
TEL: (801) 821-3100 FAX: (801) 821-2666 www.reeve-assoc.com
LAND PLANNERS • CIVIL ENGINEERS • LAND SURVEYORS
TRAFFIC ENGINEERS • STRUCTURAL ENGINEERS • LANDSCAPE ARCHITECTS

REVISIONS

DATE	DESCRIPTION

Kastle Acres
PART OF THE SE 1/4 OF SECTION 29, T.6N., R.2W., S.11B. & M., U.S. SURVEY
WEBER COUNTY, UTAH

Preliminary Plan

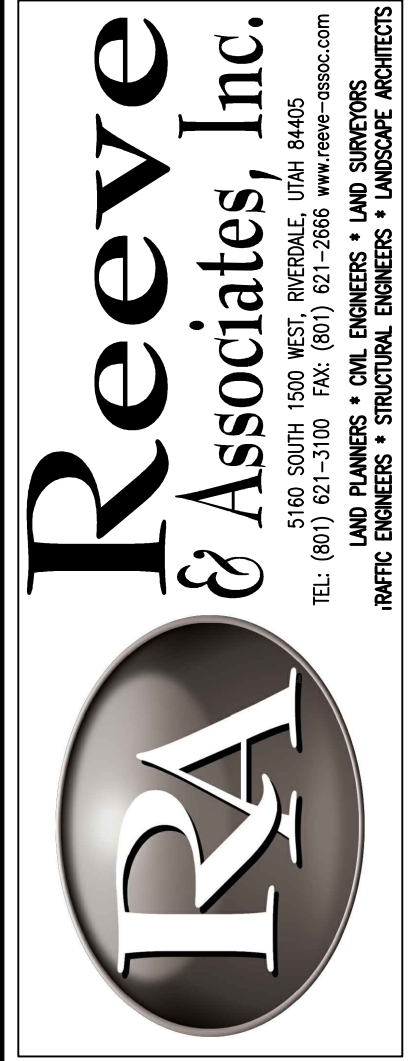
Project Info.
Engineer: N. Reeve
Designer: C. Gave
Begin Date: 12-17-19
Name: KASTLE ACRES
Number: 5918-15



Kastle Acres

Weber County, Utah

Developer:
 Layne Kap
 244 W. South Weber Dr.
 South Weber, UT 84405
 (801) 725-5510



Reeve & Associates, Inc.
 5160 SOUTH 1500 WEST RIVERDALE, UTAH 84405
 TEL: (801) 821-3100 FAX: (801) 821-2666 www.reeve-associates.com
 LAND PLANNERS • CIVIL ENGINEERS • LAND SURVEYORS
 PUBLIC ENGINEERS • STRUCTURAL ENGINEERS • LANDSCAPE ARCHITECTS

REVISIONS	DATE	DESCRIPTION

Kastle Acres
 PART OF THE SE 1/4 OF SECTION 29, T.6N., R.2W., S.11B. & M., U.S. SURVEY
 WEBER COUNTY, UTAH

Sewer Outfall Connection Exhibit

Project Info.
 Engineers: N. Reeve
 Designer: C. Cove
 Begin Date: 12-17-19
 Name: KASTLE ACRES
 Number: 5918-15

Sheet	2
2	Sheets