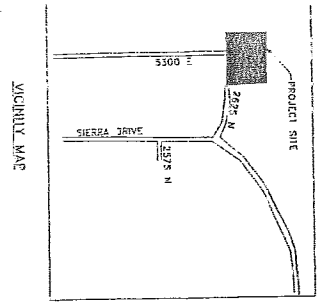




# LANCE ROY LANCE SUBDIVISION

A PART OF THE N.E. 1/4 OF SEC. 34, T.7N., R.1E., S.L.B. & M.  
WEBER COUNTY, UTAH  
NOVEMBER 2008

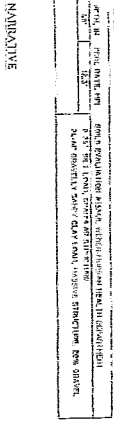


# Exhibit B

SCALE: 1" = 50'

- EXISTING EASEMENTS
- EXISTING EASEMENTS
- EXISTING EASEMENTS
- EXISTING EASEMENTS

EXISTING EASEMENTS



**NARRATIVE**

THIS IS THE GENERAL PLAN OF THE PROJECT AS SET FORTH IN THE SUBDIVISION MAP. THE SUBDIVISION MAP IS SUBJECT TO THE LOCAL ORDINANCES OF THE CITY OF SALT LAKE CITY AND THE STATE OF UTAH.

**AGRICULTURAL NOTE**

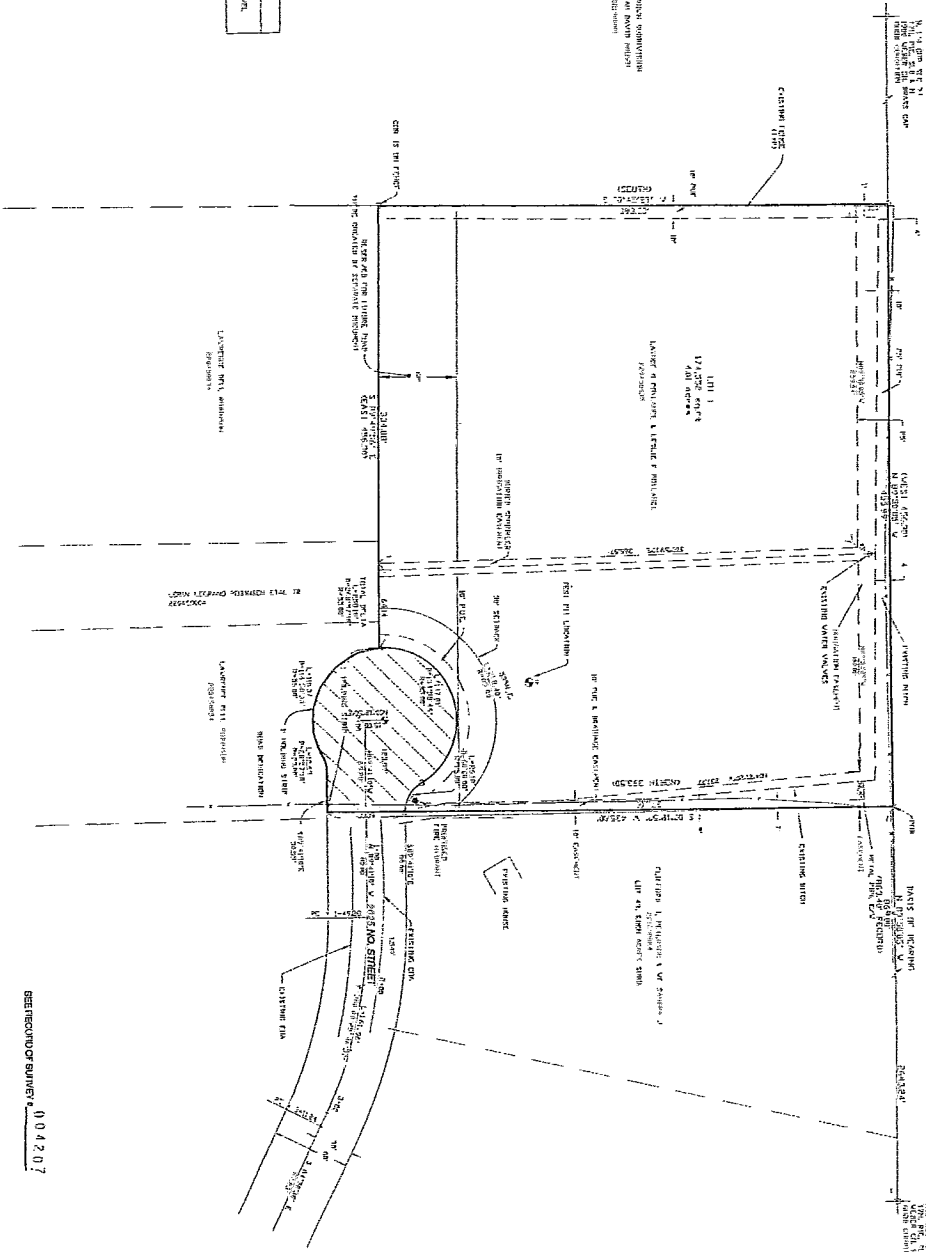
IF THE PROJECT IS TO BE USED FOR AGRICULTURAL PURPOSES, THE SUBDIVISION MAP MUST BE APPROVED BY THE AGRICULTURE COMMISSION OF THE STATE OF UTAH. THE AGRICULTURE COMMISSION OF THE STATE OF UTAH IS A BOARD OF SEVEN MEMBERS APPOINTED BY THE GOVERNOR OF THE STATE OF UTAH.

**WEBER COUNTY COMMISSION ACCEPTANCE**

I HEREBY CERTIFY THAT THE SUBDIVISION MAP HAS BEEN REVIEWED AND APPROVED BY THE WEBER COUNTY COMMISSION ON NOVEMBER 20, 2008.

*Kevin M. Bostick*  
Webber County Commission

*Kevin M. Bostick*  
Webber County Commission



RECORDED BY 004207

**SURVEYOR'S CERTIFICATE**

I, the undersigned, being a duly licensed and sworn Surveyor of the State of Utah, do hereby certify that the foregoing is a true and correct copy of the original subdivision map as filed in my office on November 20, 2008, and that the same has been approved by the County Engineer of Weber County, Utah, on the same date.

*Kevin M. Bostick*  
Surveyor

**OWNER'S DECLARATION**

I, the undersigned, being the owner of the land hereinafter described, do hereby declare that the foregoing is a true and correct copy of the original subdivision map as filed in my office on November 20, 2008, and that the same has been approved by the County Engineer of Weber County, Utah, on the same date.

*Kevin M. Bostick*  
Owner

**BOUNDARY DESCRIPTION**

THE BOUNDARY BETWEEN THE PROJECT AND THE ADJACENT PROPERTY OF THE CITY OF SALT LAKE CITY IS DESCRIBED AS FOLLOWS:

1. A CORNER OF LAND BOUNDARY SURVEY

2. A CORNER OF LAND BOUNDARY SURVEY

3. A CORNER OF LAND BOUNDARY SURVEY

NO.	DATE	BY	REVISIONS
1	11/20/08	Kevin M. Bostick	Initial Survey

**WEBER COUNTY ENGINEER**

I HEREBY CERTIFY THAT THE FOREGOING MAP HAS BEEN REVIEWED AND APPROVED BY THE WEBER COUNTY ENGINEER ON NOVEMBER 20, 2008.

*Kevin M. Bostick*  
Weber County Engineer

NO.	DATE	BY	REVISIONS
1	11/20/08	Kevin M. Bostick	Initial Survey

**WEBER COUNTY PLANNING COMMISSION APPROVAL**

I HEREBY CERTIFY THAT THE FOREGOING MAP HAS BEEN REVIEWED AND APPROVED BY THE WEBER COUNTY PLANNING COMMISSION ON NOVEMBER 20, 2008.

*Kevin M. Bostick*  
Weber County Planning Commission

NO.	DATE	BY	REVISIONS
1	11/20/08	Kevin M. Bostick	Initial Survey

**WEBER COUNTY SURVEYOR**

I HEREBY CERTIFY THAT THE FOREGOING MAP HAS BEEN REVIEWED AND APPROVED BY THE WEBER COUNTY SURVEYOR ON NOVEMBER 20, 2008.

*Kevin M. Bostick*  
Weber County Surveyor