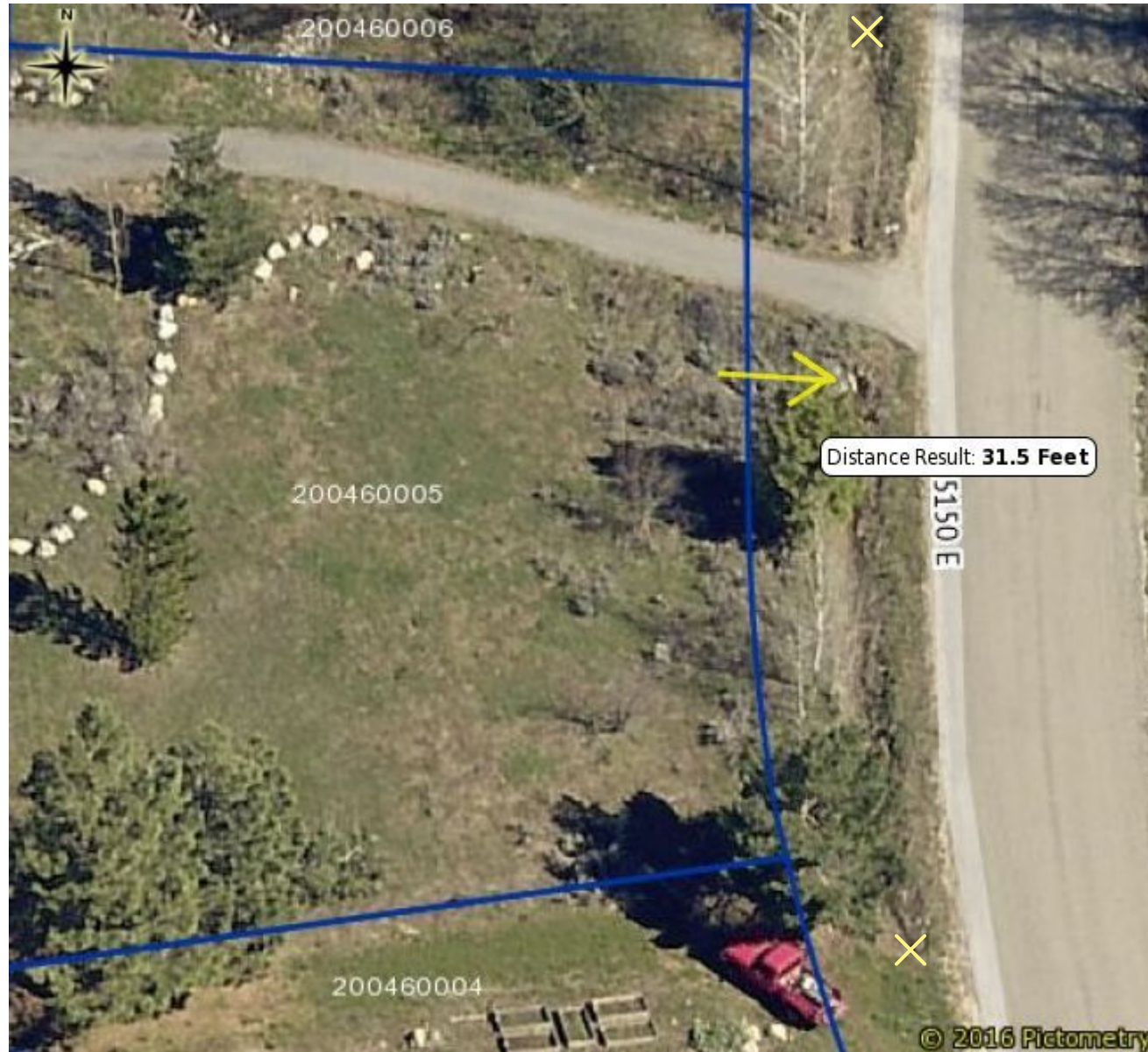


Rattlesnake drainage culvert



Rattlesnake drainage after flowing diagonally across lot 200460006's deep swale changes direction abruptly at upper X and flows down a simple 2 foot deep roadside swale or ditch passing through 14" culverts (see arrow pointing to culvert opening and second X entry) under 5 additional driveways on its way to a culvert under SR-158 where it fans out into a field. 5150 East aka Radford Lane runs down hill to SR-158 allowing runoff to run rapidly and safely not pool or dam up. No further easement is indicated after the drainage reaches 5150 East and high water is only about 6 inches. Thus my request to reduce the easement across 200460006 to 35' seems justified.