

Ex 5 End of choose your own exchange

Leg 6

Timing: 11 am to 6pm

Starts at the top of Avon Pass Road and Ends at Liberty Park. Runners will run on the shoulder of the road against traffic



ROAD CLOSURE Barricade

162

158

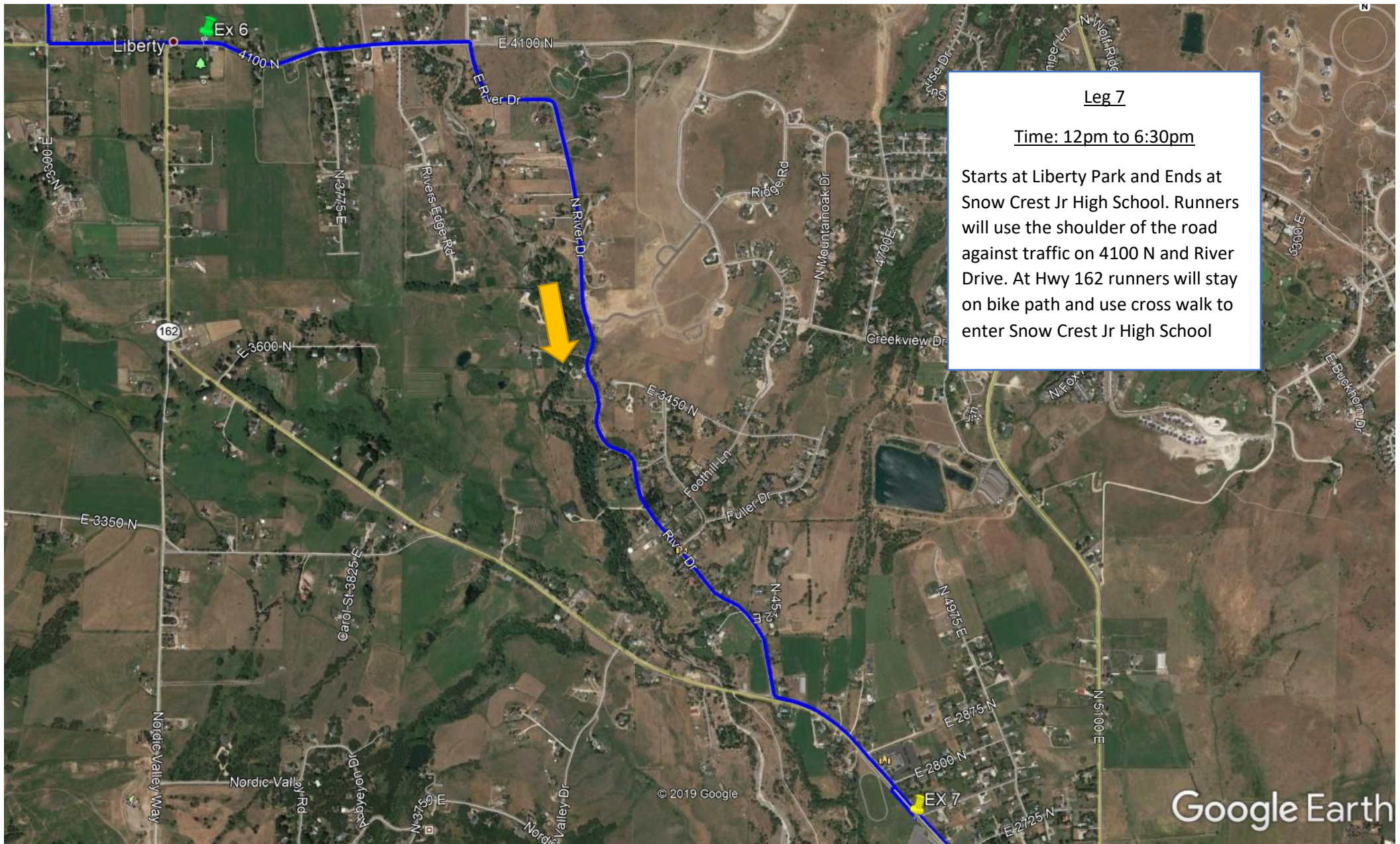
canyon Rd

4100 N Liberty

Ex 6

N 3300 E

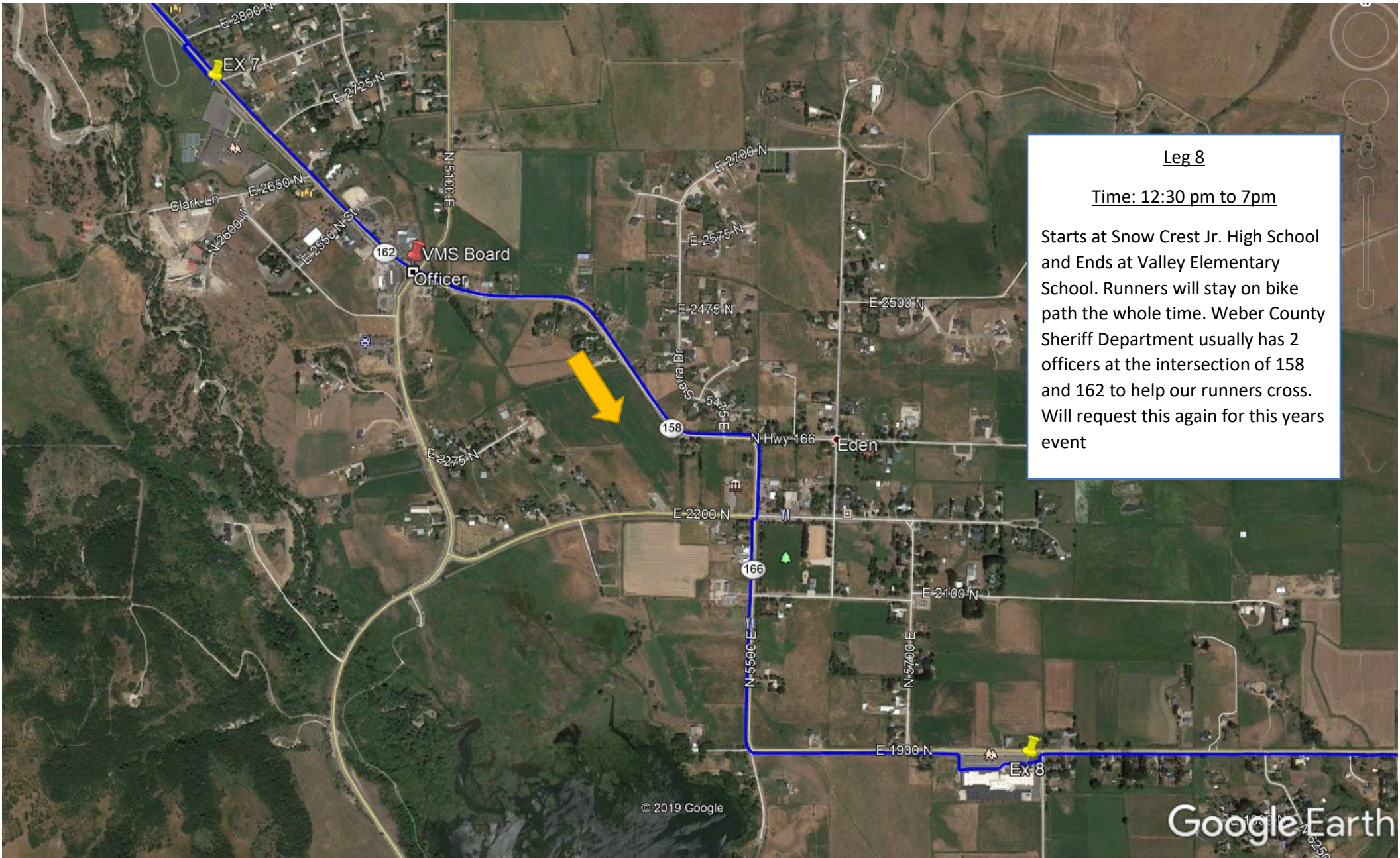
N 3600 E



Leg 7

Time: 12pm to 6:30pm

Starts at Liberty Park and Ends at Snow Crest Jr High School. Runners will use the shoulder of the road against traffic on 4100 N and River Drive. At Hwy 162 runners will stay on bike path and use cross walk to enter Snow Crest Jr High School



Leg 8

Time: 12:30 pm to 7pm

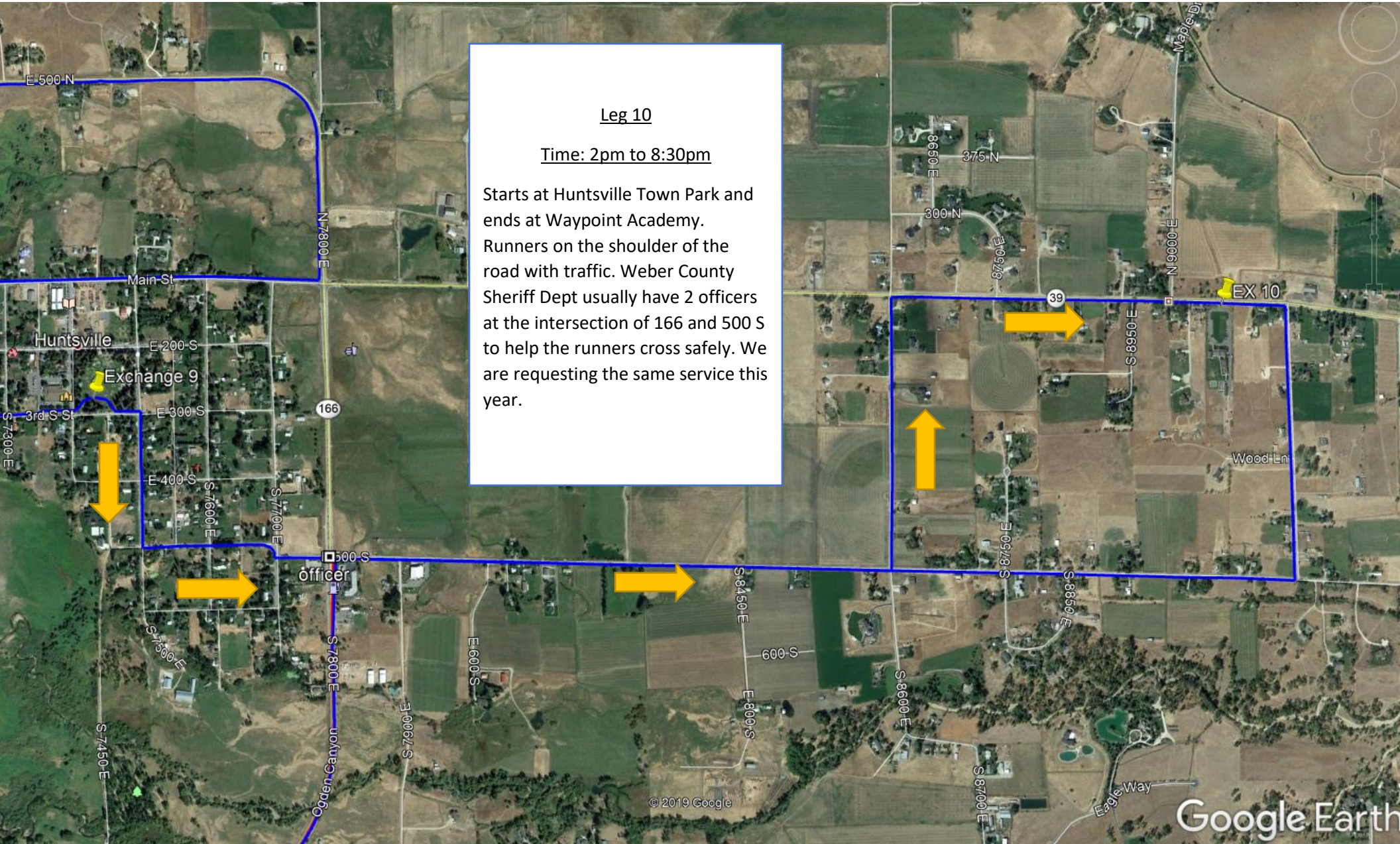
Starts at Snow Crest Jr. High School and Ends at Valley Elementary School. Runners will stay on bike path the whole time. Weber County Sheriff Department usually has 2 officers at the intersection of 158 and 162 to help our runners cross. Will request this again for this years event



Leg 9

Time: 1pm to 8pm

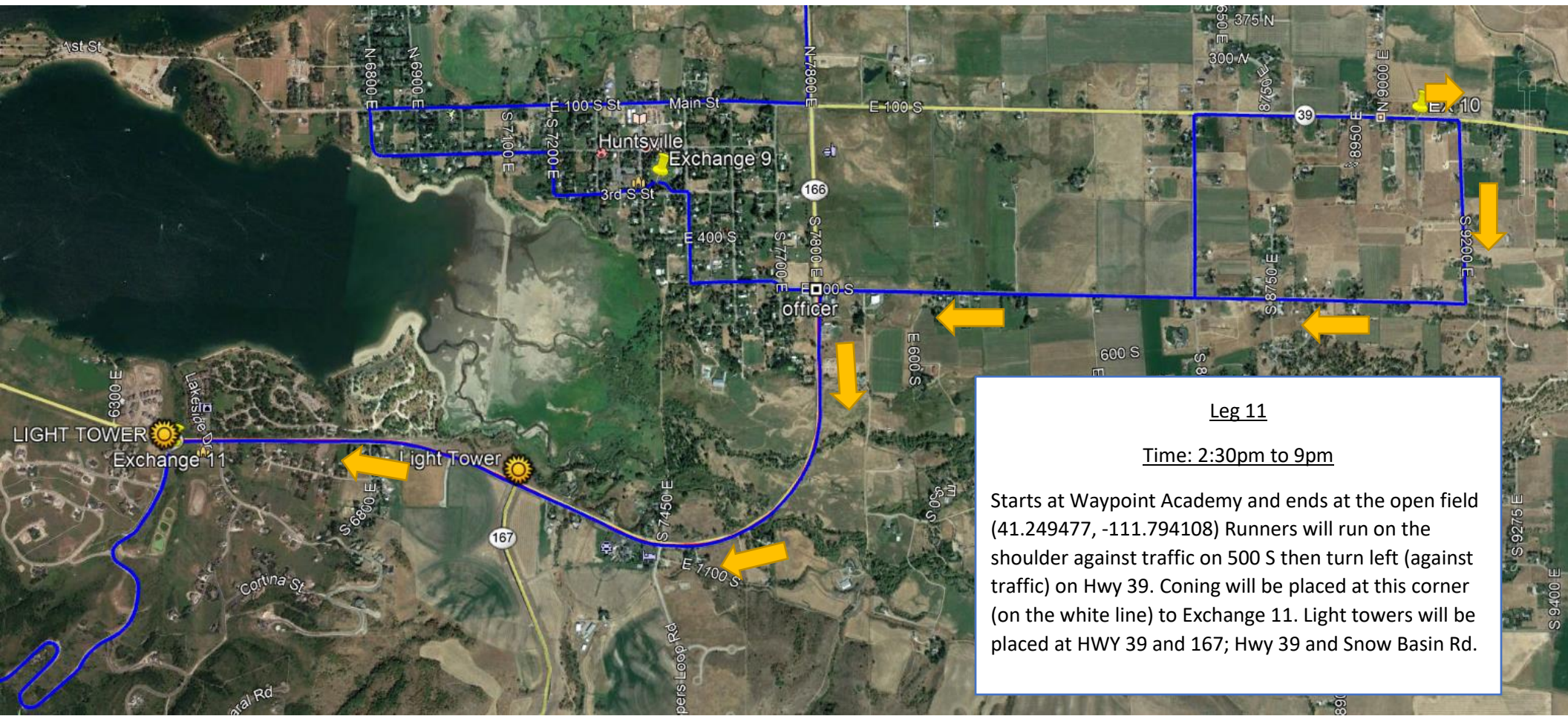
Starts at Valley Elementary School and ends at Huntsville Town Park. Runners will stay on the bike path from the school all the way to 100 S in Huntsville. Runners will use the shoulder of the road, against traffic in Huntsville till they arrive at the park. 1 water station will be placed on this leg near the corner of 7100 E and 500 N. The water station is a 6 ft table with 3 water coolers on it. Water will be filled at Liberty Park.



Leg 10

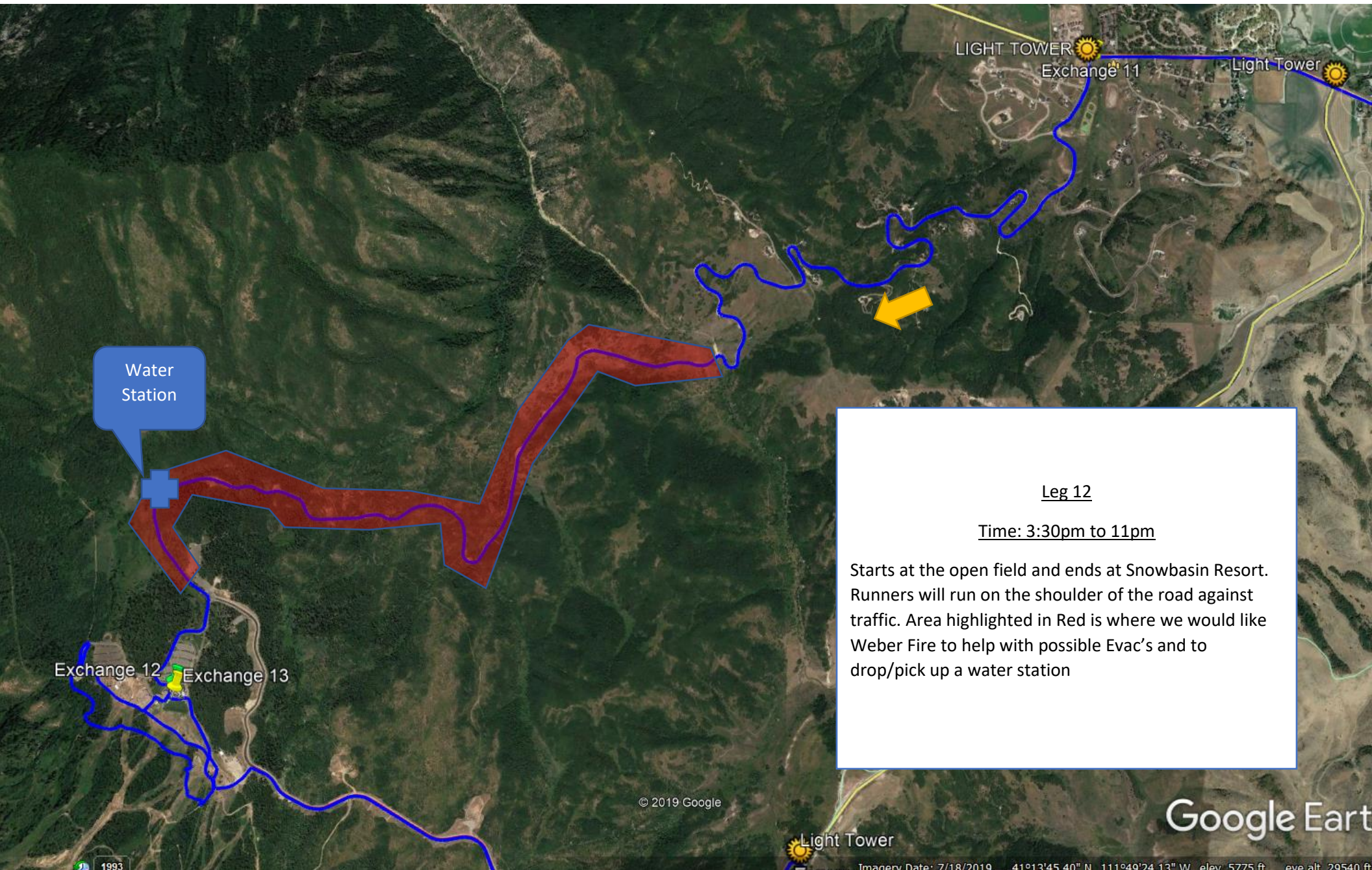
Time: 2pm to 8:30pm

Starts at Huntsville Town Park and ends at Waypoint Academy. Runners on the shoulder of the road with traffic. Weber County Sheriff Dept usually have 2 officers at the intersection of 166 and 500 S to help the runners cross safely. We are requesting the same service this year.



Leg 11
Time: 2:30pm to 9pm

Starts at Waypoint Academy and ends at the open field (41.249477, -111.794108) Runners will run on the shoulder against traffic on 500 S then turn left (against traffic) on Hwy 39. Coning will be placed at this corner (on the white line) to Exchange 11. Light towers will be placed at HWY 39 and 167; Hwy 39 and Snow Basin Rd.



Water Station

Leg 12
Time: 3:30pm to 11pm
Starts at the open field and ends at Snowbasin Resort. Runners will run on the shoulder of the road against traffic. Area highlighted in Red is where we would like Weber Fire to help with possible Evac's and to drop/pick up a water station

Exchange 12 Exchange 13

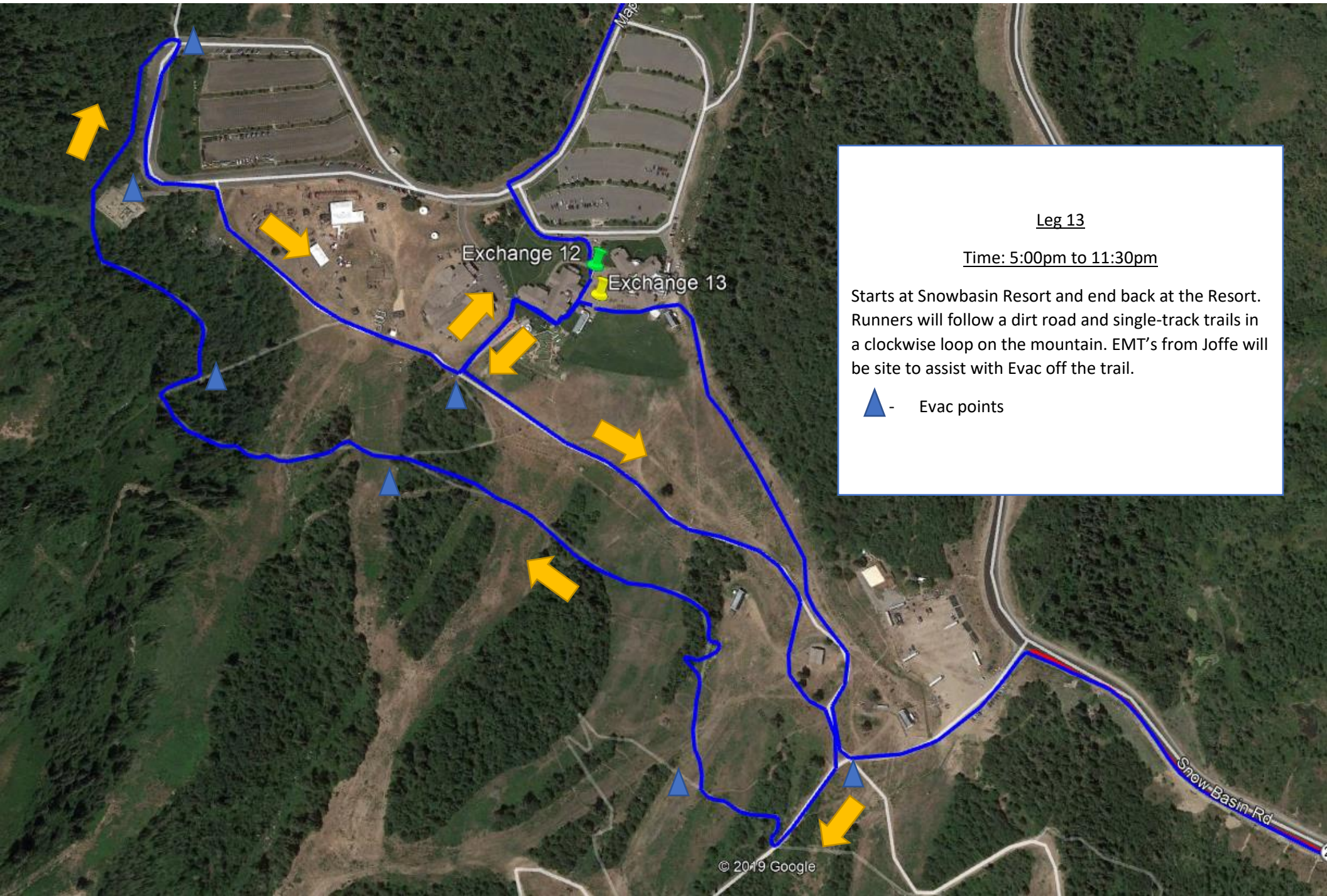
© 2019 Google

Light Tower

Google Earth

1993

Imagery Date: 7/18/2019 41°13'45.40" N 111°49'24.13" W elev 5775 ft eye alt 29540 ft



Leg 13

Time: 5:00pm to 11:30pm

Starts at Snowbasin Resort and end back at the Resort. Runners will follow a dirt road and single-track trails in a clockwise loop on the mountain. EMT's from Joffe will be site to assist with Evac off the trail.

▲ - Evac points

Exchange 12 Exchange 13

226

Light Tower

CONING- LANE CLOSURE

Leg 14

Time: 5:30 pm to 12:00am

Starts at Snowbasin Resort and ends at the bottom of HWY 167. Runners will be on the shoulder against traffic on HWY 226 heading to 167. Weber County Sheriff Department usually has 1 officer at the intersection of Hwy 226 and 167 to help runners cross safely. Runners will be on the south side of 226 and will need to cross 167 before turning right to head down the hill. We are requesting this same service again this year. Further- a Light tower will be placed at this intersection to increase visibility.

Green Pond

167

© 2019 Google

Google Earth

1993

Imagery Date: 7/18/2010 41°12'06.84" N 111°52'05.18" W elev: 6621 ft eye alt: