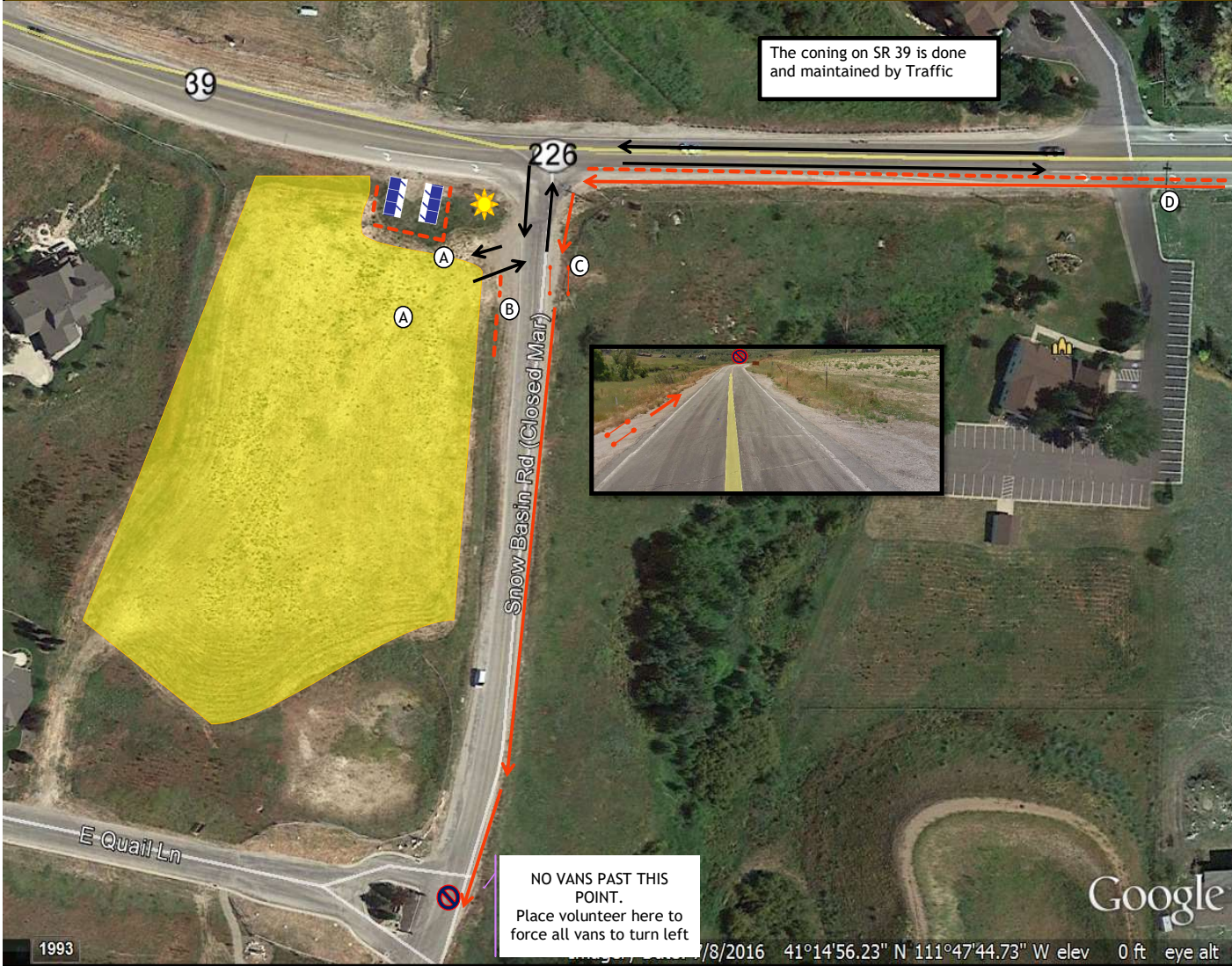


Exchange 11 Venue:	Field	Location: Ogden Canyon Rd (SR-39) & Old Snowbasin	Venue Contact:	Night Time Hours 7:45 PM - 6:30 AM
Max Parking Space Peak Parking Needs Peak Time	150 48 4:31 PM	Volunteer Shift Time Shift 1 Shift 2 Shift 3	Key: Chute Cones & Tape Van's Path Runner's Path	Toilets Volunteer Police Officer Parking Light Tower
		Start End 1:30 PM 6:15PM 5:45 PM 10:00 PM		

Overview



Overview Notes

CHUTE PLACEMENT	Place chute on shoulder as far off the road as possible
PARKING INSTRUCTIONS	Vans should be directed into the field- no street parking
TRAFFIC CONCERNS	Old Snowbasin Road is closed to Van traffic. Vans must proceed to Snowbasin via Trappers Loop.
VAN/RUNNER FLOW	Runners approach exchange on the south side of SR-39. The runners need to continue along the east side of Old Snowbasin road. Place chute on East side of Old Snowbasin Road. Teams should be corralled on west side behind coning. Only the next runner should cross the road.
PORT-A-POTTIE PLACEMENT	
PRIVATE PROPERTY CONCERNS	
OTHER DETAIL NOTES	Exchange Bin, Binder, and cones on site should be cleaned up and stacked by Portable toilets for Course Set Up to pick up once the exchange has closed

Volunteer Duties

A	Manage parking flow. Only the next runner is allowed to cross the road and wait by the chute. Help runner cross road safely. when slow, manage toilets & clean up exchange	2
B	Manage runner cross from parking lot to chute. Only the next runner up or the run who has just finished is allowed by the chute. Please keep crowds behind the cones by the parking lot.	1
C	Manage Chute, cross team off team list. Help Volunteer B by encouraging only the next runner should be at the chute	1
D	Radioing incoming runner to volunteer at chute	1
		5