

SCALE: 1" = 40'
DATE: 12-5-2019
DESIGN: WJS
DRAWN: WJS
CHECKED: TMN

PLAN AND PROFILE
 POLE PATCH PHASE 3
 JESSIE CREEK DRIVE
 WEBER COUNTY, UTAH

GARDNER ENGINEERING
 CIVIL - LAND PLANNING
 MUNICIPAL - LAND SURVEYING
 5150 SOUTH 375 EAST OGDEN, UT
 OFFICE: 801-476-0202 FAX: 801-476-0066

Know what's below. 811
Call 811 before you dig.
BLUE STAKES OF UTAH
 UTILITY NOTIFICATION CENTER, INC.
www.bluestakes.org
 1-800-662-4111

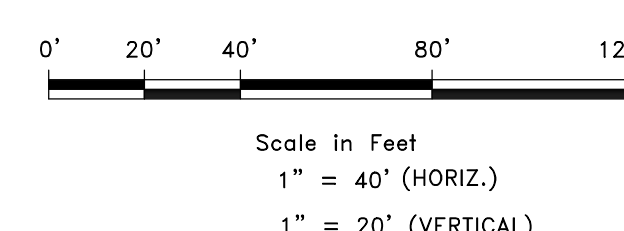
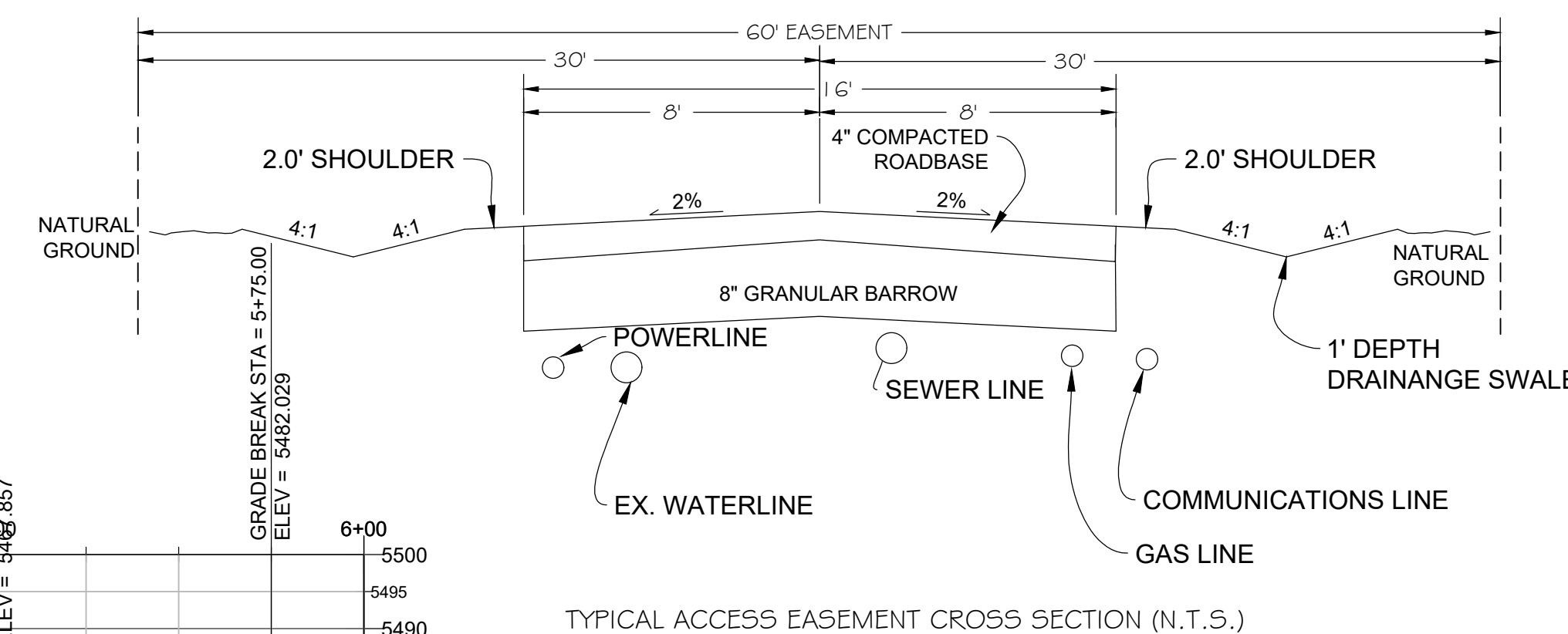
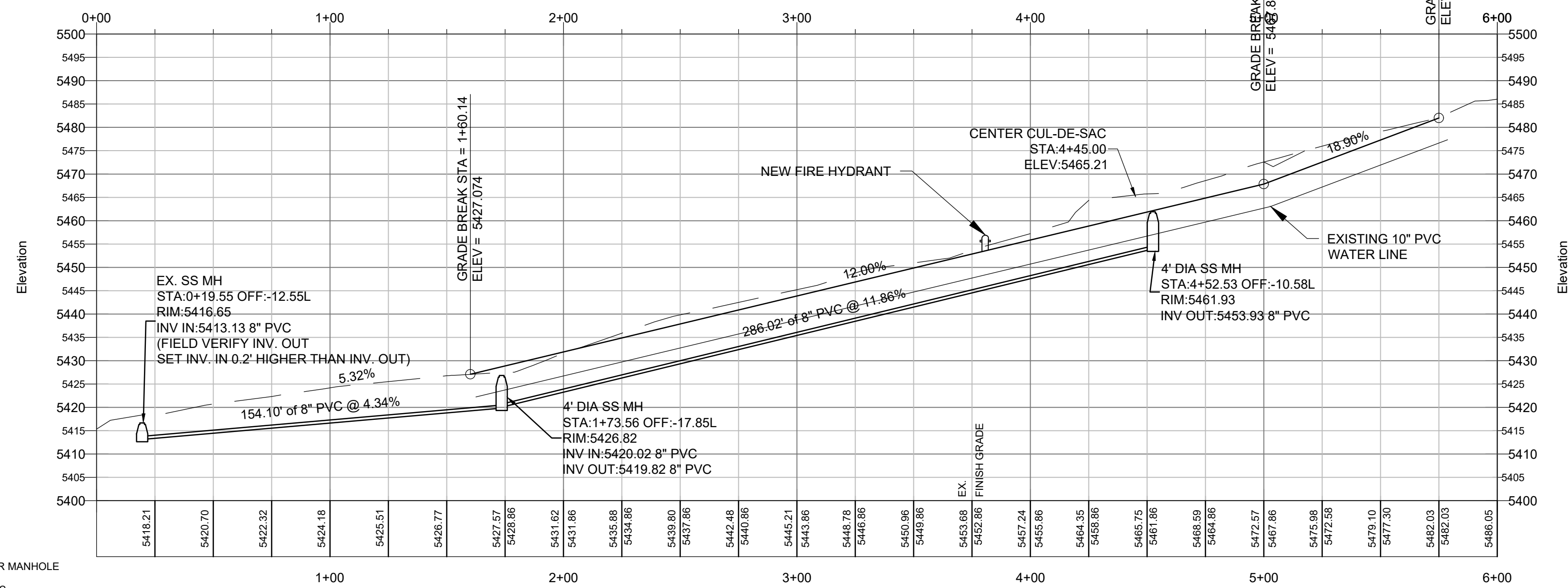
UTILITY DISCLAIMER

THE CONTRACTOR IS SPECIFICALLY CAUTIONED THAT EXISTING UNDERGROUND UTILITIES AND IMPROVEMENTS ARE SHOWN IN THEIR APPROXIMATE LOCATIONS BASED UPON RECORD INFORMATION AVAILABLE AT THE TIME OF PREPARATION OF PLANS. LOCATIONS MAY NOT HAVE BEEN VERIFIED IN THE FIELD AND NO GUARANTEE IS MADE AS TO ACCURACY OR COMPLETENESS OF THE INFORMATION SHOWN. IT SHALL BE RESPONSIBILITY OF THE CONTRACTOR TO DETERMINE THE EXISTENCE AND LOCATION OF THOSE UTILITIES SHOWN ON THESE PLANS OR INDICATED IN THE FIELD BY LOCATING SERVICES. ANY ADDITIONAL COSTS INCURRED AS A RESULT OF CONTRACTOR'S FAILURE TO VERIFY LOCATIONS OF EXISTING UTILITIES PRIOR TO BEGINNING OF CONSTRUCTION IN THEIR VICINITY SHALL BE BORNE BY THE CONTRACTOR AND ASSUMED INCLUDED IN THE CONTRACT.

LEGEND

	BOUNDARY LINE		FIRE HYDRANT
	ADJOINER LINE		WATER METER
	SETBACK LINE		EX FIBER OPTIC
	PUE LINE		SANITARY SEWER MANHOLE
	CENTER LINE		UTILITY LATERALS
	EX FENCE LINE		EX POWER
	SEWER LINE		
	EX FENCE LINE		
	STORM DRAIN LINE		
	WATER LINE		
	IRRIGATION WATER LINE		
	EX GAS		

JESSIE CREEK DRIVE PROFILE



ALL IMPROVEMENTS TO CONFORM TO CURRENT CITY STANDARDS AND SPECIFICATIONS
 CULINARY WATER IMPROVEMENTS TO CONFORM TO THE WATER UTILITY'S STANDARDS AND SPECIFICATIONS

CE1-01