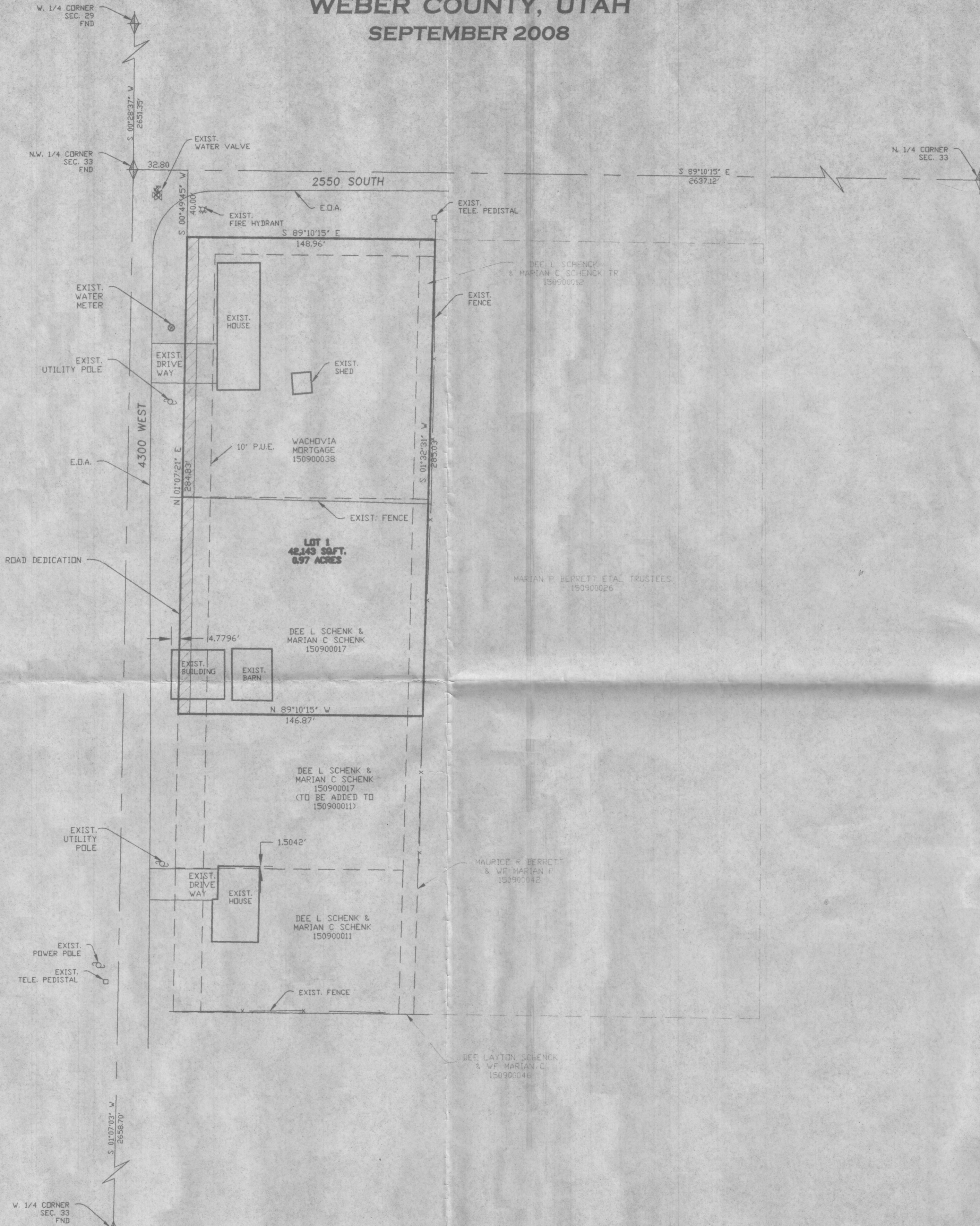


# DEE SCHENCK SUBDIVISION

## A PART OF THE N. E. 1/4 OF SEC. 33 T. 6 N., R. 2 E., S.L.B. & M.

### WEBER COUNTY, UTAH

#### SEPTEMBER 2008



SCALE: 1" = 40'

○ = 5/8" x 24" REBAR WITH CAP STAMPED 172737

#### NARRATIVE

THE PURPOSE OF THIS SURVEY WAS TO COMBINE SEVERAL PARCELS AND CREATE A 1 LOT SUBDIVISION WITH THE REMAINING PARCELS BEING TRANSFERRED TO THE MOST SOUTHERLY REMAINING PARCEL (150900011). BASIS OF BEARING IS UTAH STATE PLANE BEARING.

#### WEBER-MORGAN HEALTH DEPARTMENT

I HEREBY CERTIFY THAT THE SOILS, PERCOLATION RATES, AND SITE CONDITION FOR THIS SUBDIVISION HAVE BEEN INVESTIGATED BY THIS OFFICE AND ARE APPROVED FOR ON-SITE WASTEWATER DISPOSAL SYSTEMS.

SIGNED THIS \_\_\_\_\_ DAY OF \_\_\_\_\_, 20\_\_

\_\_\_\_\_  
DIRECTOR, WEBER-MORGAN HEALTH DEPARTMENT.

#### WEBER COUNTY PLANNING COMMISSION APPROVAL

THIS IS TO CERTIFY THAT THIS SUBDIVISION PLAT WAS DULY APPROVED BY THE WEBER COUNTY PLANNING COMMISSION ON THE \_\_\_\_\_ DAY OF \_\_\_\_\_, 20\_\_

\_\_\_\_\_  
CHAIRMAN, WEBER COUNTY PLANNING COMMISSION

#### WEBER COUNTY ENGINEER

I HEREBY CERTIFY THAT THE REQUIRED PUBLIC IMPROVEMENT STANDARDS AND DRAWINGS FOR THIS SUBDIVISION CONFORM WITH COUNTY STANDARDS AND THE AMOUNT OF THE FINANCIAL GUARANTEE IS SUFFICIENT FOR THE INSTALLATION OF THESE IMPROVEMENTS.

SIGNED THIS \_\_\_\_\_ DAY OF \_\_\_\_\_, 20\_\_

\_\_\_\_\_  
SIGNATURE

#### WEBER COUNTY SURVEYOR

I HEREBY CERTIFY THAT THE WEBER COUNTY SURVEYOR'S OFFICE HAS REVIEWED THIS PLAT FOR MATHEMATICAL CORRECTNESS, SECTION CORNER DATA, AND FOR HARMONY WITH LINES AND MONUMENTS ON RECORD IN COUNTY OFFICES. THE APPROVAL OF THIS PLAT BY THE WEBER COUNTY SURVEYOR DOES NOT RELIEVE THE LICENSED LAND SURVEYOR WHO EXECUTED THIS PLAT FROM THE RESPONSIBILITIES AND/OR LIABILITIES ASSOCIATED THEREWITH.

SIGNED THIS \_\_\_\_\_ DAY OF \_\_\_\_\_, 20\_\_

\_\_\_\_\_  
SIGNATURE

#### WEBER COUNTY ATTORNEY

I HAVE EXAMINED THE FINANCIAL GUARANTEE AND OTHER DOCUMENTS ASSOCIATED WITH THIS SUBDIVISION PLAT AND IN MY OPINION THEY CONFORM WITH THE COUNTY ORDINANCE APPLICABLE THERETO AND NOW IN FORCE AND EFFECT.

SIGNED THIS \_\_\_\_\_ DAY OF \_\_\_\_\_, 20\_\_

\_\_\_\_\_  
SIGNATURE

#### WEBER COUNTY COMMISSION ACCEPTANCE

THIS IS TO CERTIFY THAT THIS SUBDIVISION PLAT, THE DEDICATION OF STREETS AND OTHER PUBLIC WORKS AND FINANCIAL GUARANTEE OF PUBLIC IMPROVEMENTS ASSOCIATED WITH THIS SUBDIVISION THEREON ARE HEREBY APPROVED AND ACCEPTED BY THE COMMISSIONERS OF WEBER COUNTY, UTAH THIS \_\_\_\_\_ DAY OF \_\_\_\_\_, 20\_\_

ATTEST:  
TITLE: CHAIRMAN, WEBER COUNTY COMMISSION

#### SURVEYORS CERTIFICATE

I, DOUG L. GRAHAM, HOLDING LICENSE NUMBER 172737 IN ACCORDANCE WITH TITLE 36, CHAPTER 22, PROFESSIONAL ENGINEERS AND LAND SURVEYORS LICENSING ACT, HAVE COMPLETED A SURVEY OF THE PROPERTY DESCRIBED ON THE PLAT IN ACCORDANCE WITH SECTION 17-23-17 AND HAVE VERIFIED ALL MEASUREMENTS AND PLACED MONUMENTS AS REPRESENTED ON THE PLAT.

I DO ALSO HEREBY CERTIFY THAT THIS PLAT OF \_\_\_\_\_ DEE SCHENCK SUBDIVISION IN WEBER COUNTY, UTAH, HAS BEEN CORRECTLY DRAWN TO SCALE AND IS A TRUE AND CORRECT REPRESENTATION OF THE FOLLOWING DESCRIPTION OF LANDS INCLUDED IN SAID SUBDIVISION, BASED ON DATA COMPILED FROM RECORDS IN THE WEBER COUNTY RECORDERS OFFICE, WEBER COUNTY SURVEYORS OFFICE AND OF A SURVEY MADE ON THE GROUND, AND I FURTHER CERTIFY THAT ALL LOTS MEET CURRENT LOT WIDTH AND AREA REQUIREMENTS FOR WEBER COUNTY ZONING.

SIGNED THIS \_\_\_\_\_ DAY OF \_\_\_\_\_, 20\_\_

#### OWNERS DEDICATION

WE, THE UNDERSIGNED OWNERS OF THE HEREIN DESCRIBED TRACT OF LAND, DO HEREBY SET APART AND SUBDIVIDE THE SAME INTO LOTS AND STREETS AS SHOWN HEREON AND NAME SAID TRACT \_\_\_\_\_ DEE SCHENCK SUBDIVISION.

AND DO HEREBY DEDICATE TO PUBLIC USE ALL THOSE PARTS OR PORTIONS OF SAID TRACT OF LAND DESIGNATED AS STREETS, THE SAME TO BE USED AS PUBLIC THOROUGHFARES FOREVER. ALSO GRANT AND DEDICATE A PERPETUAL RIGHT AND EASEMENT OVER, UPON AND UNDER THE LANDS DESIGNATED HEREON AS PUBLIC UTILITY, STORM WATER DETENTION PONDS DRAINAGE EASEMENTS, THE SAME TO BE USED FOR THE INSTALLATION, MAINTENANCE AND OPERATION OF PUBLIC UTILITY SERVICE LINE, STORM DRAINAGE FACILITIES OR FOR THE PERPETUAL PRESERVATION OF WATER CHANNELS IN THEIR NATURAL STATE WHICHEVER IS APPLICABLE AS MAY BE AUTHORIZED BY THE GOVERNING AUTHORITY, WITH NO BUILDINGS OR STRUCTURES BEING ERRECTED WITHIN SUCH EASEMENTS.

SIGNED THIS \_\_\_\_\_ DAY OF \_\_\_\_\_, 20\_\_

#### ACKNOWLEDGMENT

STATE OF UTAH )  
COUNTY OF WEBER )

ON THIS \_\_\_\_\_ DAY OF \_\_\_\_\_, 20\_\_, PERSONALLY APPEARED BEFORE ME, THE UNDERSIGNED NOTARY PUBLIC, THE SIGNERS OF THE ABOVE OWNERS DEDICATION \_\_\_\_\_ IN NUMBER, WHO DULY ACKNOWLEDGED TO ME THAT THEY SIGNED IT FREELY AND VOLUNTARILY AND FOR THE PURPOSES THEREIN MENTIONED.

COMMISSION EXPIRES \_\_\_\_\_ NOTARY PUBLIC \_\_\_\_\_

#### BOUNDARY DESCRIPTION

A PART OF THE NORTHEAST QUARTER OF SECTION 33, TOWNSHIP 6 NORTH RANGE 2 EAST, SALT LAKE BASE AND MERIDIAN, U.S. SURVEY, BEGINNING AT A POINT SOUTH 89°10'15" EAST 32.80 FEET, SOUTH 00°49'45" WEST 40.00 FEET FROM THE NORTHWEST QUARTER CORNER OF SAID SECTION, RUNNING THENCE SOUTH 89°10'15" EAST 148.96 FEET, THENCE SOUTH 01°32'31" WEST 285.03 FEET, THENCE NORTH 89°10'15" WEST 146.87 FEET, THENCE NORTH 01°07'21" EAST 284.83 FEET TO THE POINT OF BEGINNING, CONTAINS 0.97 ACRES.

<b>LANDMARK SURVEYING, INC.</b> A COMPLETE LAND SURVEYING SERVICE 4646 S. 3500 W. WA-3, WEST HAVEN, UTAH 84401 PHONE 801-731-4075 FAX 801-731-8596		WEBER COUNTY RECORDER	
		ENTRY # _____	FEE _____
CLIENT: DEE SCHENCK		FILED FOR RECORD & RECORDED	
LOCATION: PART OF THE N.W. 1/4 OF SEC. 33 T.6N, R.2E., S.L.B.&M.		THIS _____ DAY OF _____, 20__	
SURVEYED: MAY 2004		AT _____ IN BOOK _____ OF _____	
REVISIONS:		PAGE _____	
09-10-08 K.T.	DRAWN BY: K.T.	WEBER COUNTY RECORDER	
	CHECKED BY: D.L.G.	BY _____	
	DATE: 09-09-08	DEPUTY	
	FILE: 3057finkaley.dwg		