

THIS PLAT IS PROVIDED, WITHOUT CHARGE, FOR YOUR INFORMATION IT IS NOT INTENDED TO SHOW ALL MATTERS RELATED TO THE PROPERTY INCLUDING, BUT NOT LIMITED TO, AREA, DIMENSIONS, EASEMENTS, ENCROACHMENTS, OR LOCATION OF BOUNDARIES IT IS NOT A PART OF, NOR DOES IT MODIFY, THE COMMITMENT OR POLICY TO WHICH IT IS ATTACHED THE COMPANY ASSUMES NO LIABILITY FOR ANY MATTER RELATED TO THIS SKETCH REFERENCE SHOULD BE MADE TO AN ACCURATE SURVEY FOR FURTHER INFORMATION

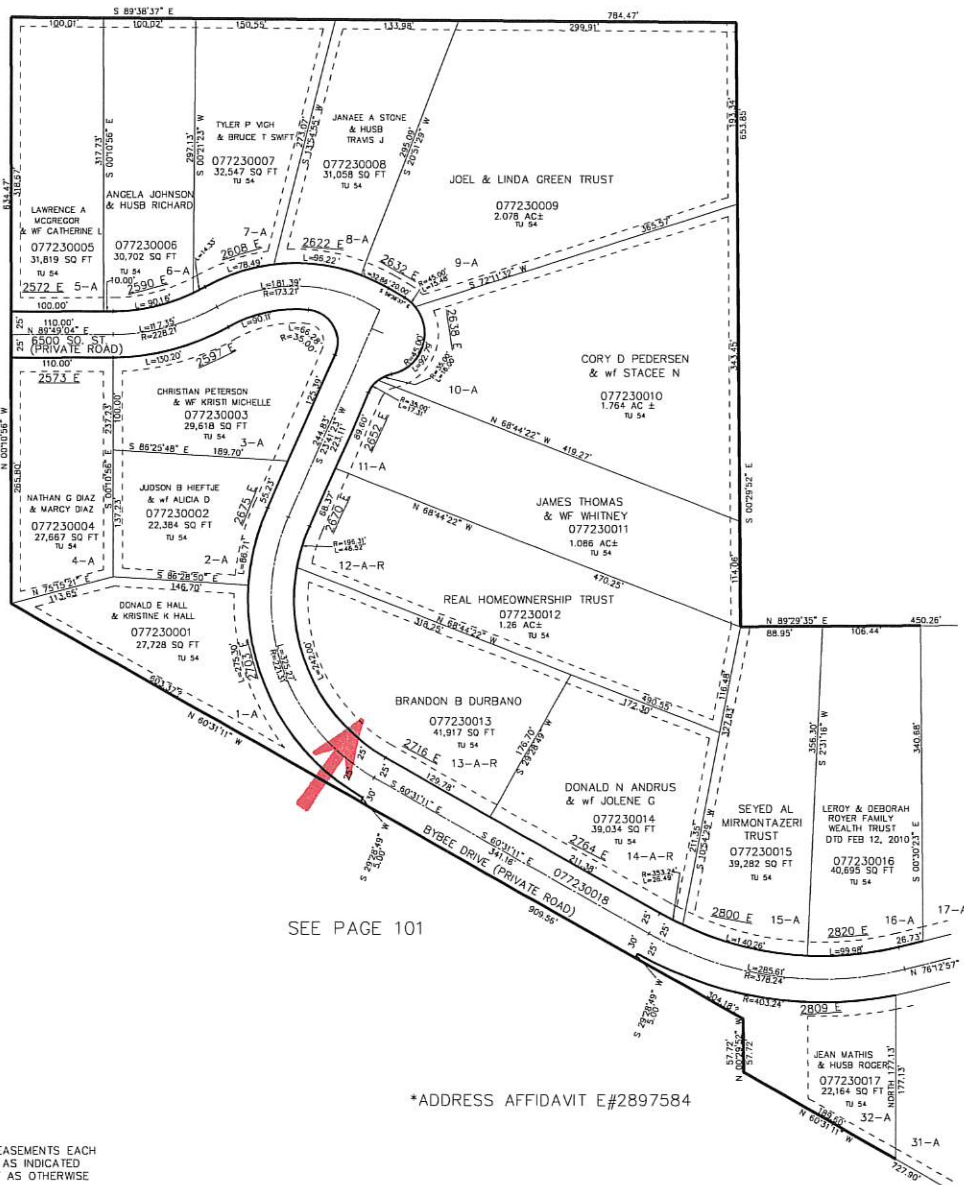
PART OF THE NE 1/4, OF SECTION 26 AND NW 1/4 SECTION 25 T.5N., R1W., S.L.B. & M.
CEDAR COVE ESTATES 3RD AMENDMENT

723

IN WEBER COUNTY

TAXING UNIT: 54

SCALE 1" = 100'



SEE PAGE 101

SEE PAGE 724

*ADDRESS AFFIDAVIT E#2897584

10' UTILITY & DRAINAGE EASEMENTS EACH SIDE OF PROPERTY LINES AS INDICATED BY DASHED LINES EXCEPT AS OTHERWISE SHOWN.

FOR COMPLETE ENG DATA SEE ORIGINAL DEDICATION PLAT IN BOOK 70, PAGES 87 & 88, OF RECORDS.