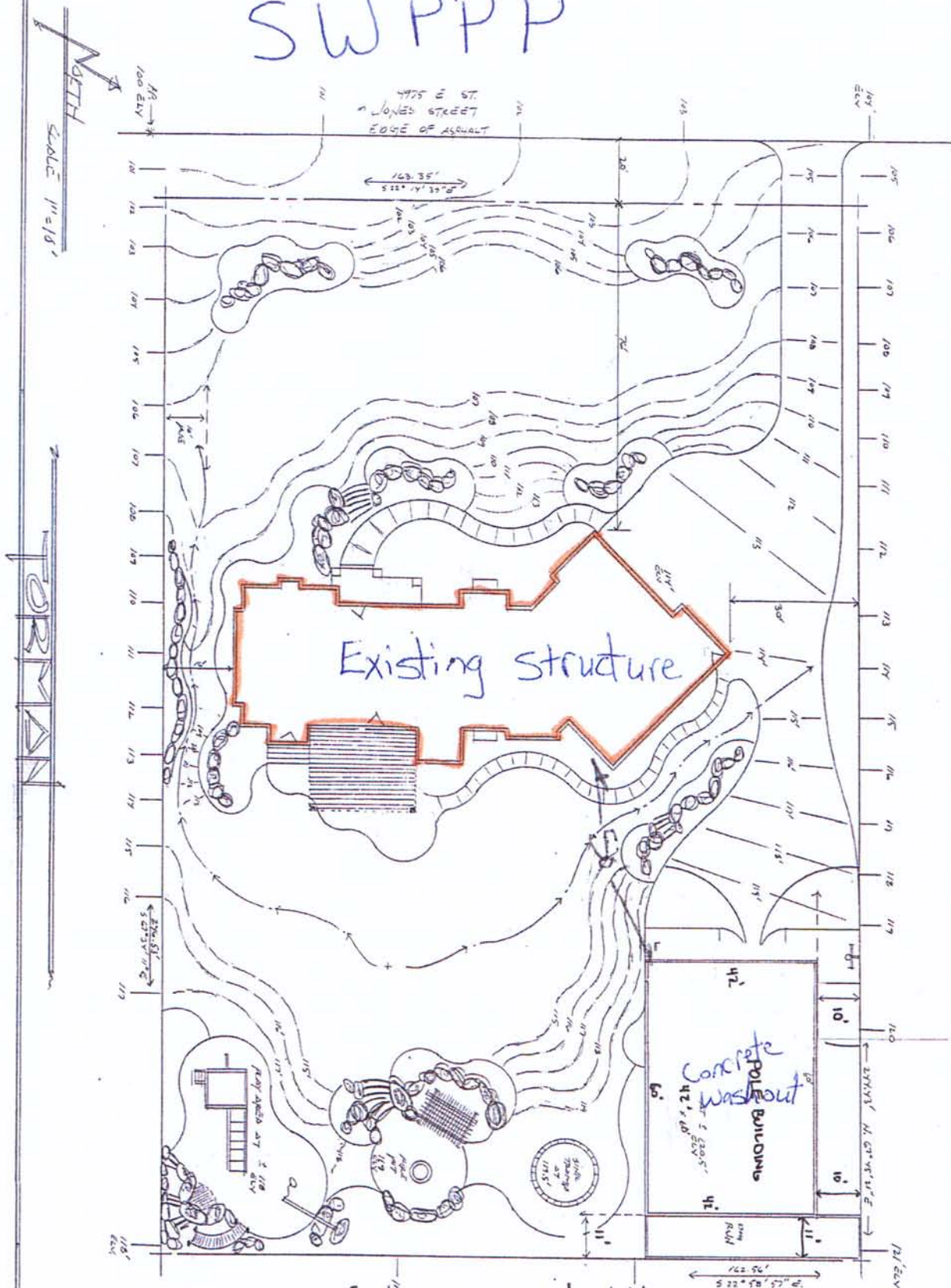


SWPPP



1. 2900 square feet will be disturbed.
2. Contractor will be responsible for conditions of the site during construction.
3. Fencing will prevent the neighbors from being affected by construction.
4. Excavated material will be hauled away.
5. Concrete washout will be in the middle of the new building and will be hauled away.



Zaccor Field
Construction

6. Porta Johns are not necessary due to short construction time.

7. The existing concrete driveway will be used as the construction entrance.

8. When mud & dirt are tracked on the asphalt contractor will clean up and haul away.

9. Rain/Storm water currently drains away from project site.