

PART OF N.W. 1/4 OF N.E. 1/4 OF SECTION 5, T.5N., R.1W., S.L.B. & M.

F.T. SANFORD'S SUBDIVISION

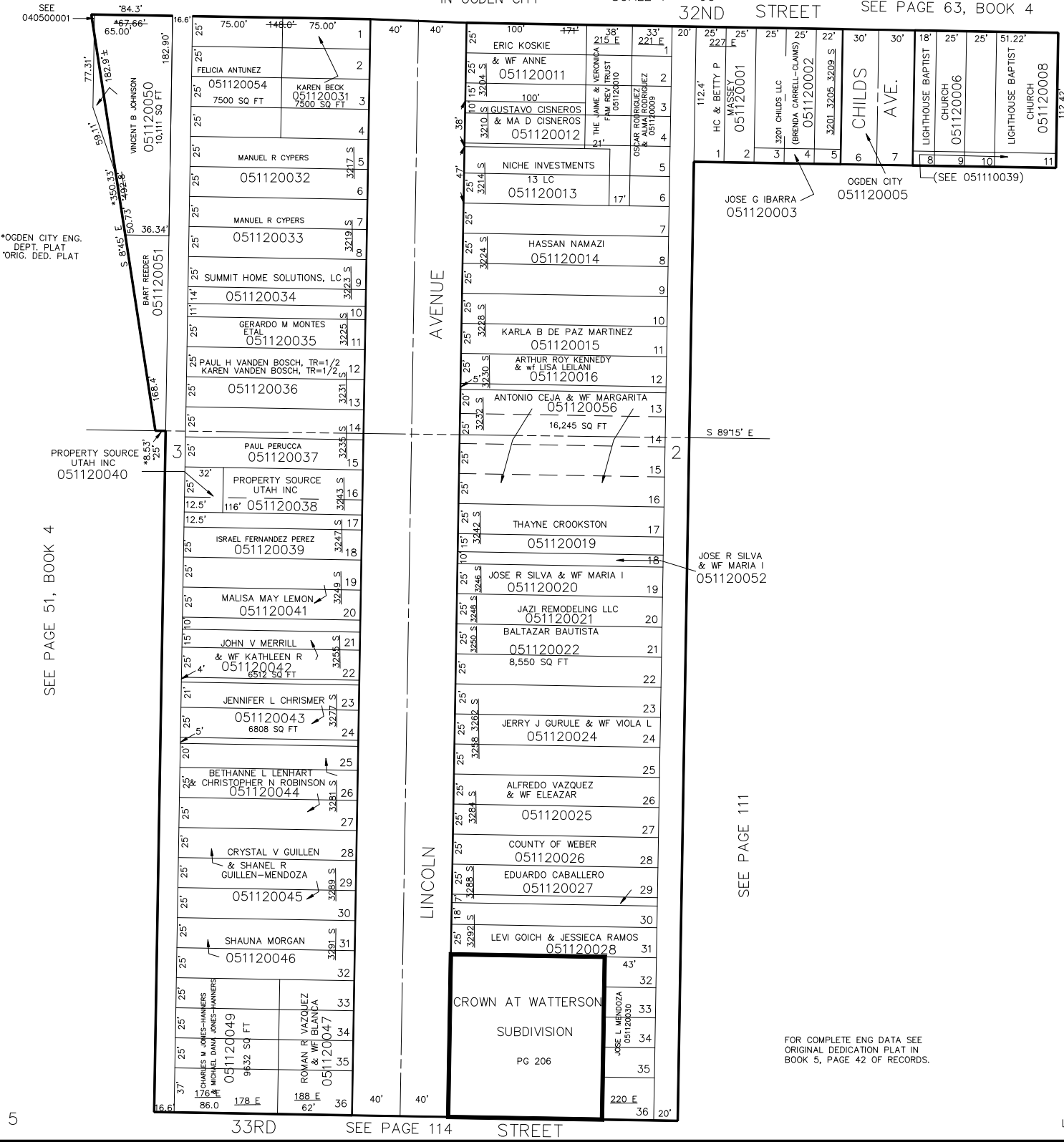
TAXING UNIT: 25

IN OGDEN CITY

SCALE 1" = 60'

32ND STREET

SEE PAGE 63, BOOK 4



*OGDEN CITY ENG. DEPT. PLAT ORIG. DED. PLAT

PROPERTY SOURCE UTAH INC 051120040

SEE PAGE 51, BOOK 4

SEE PAGE 111

SEE PAGE 39, BOOK 4

33RD STREET SEE PAGE 114