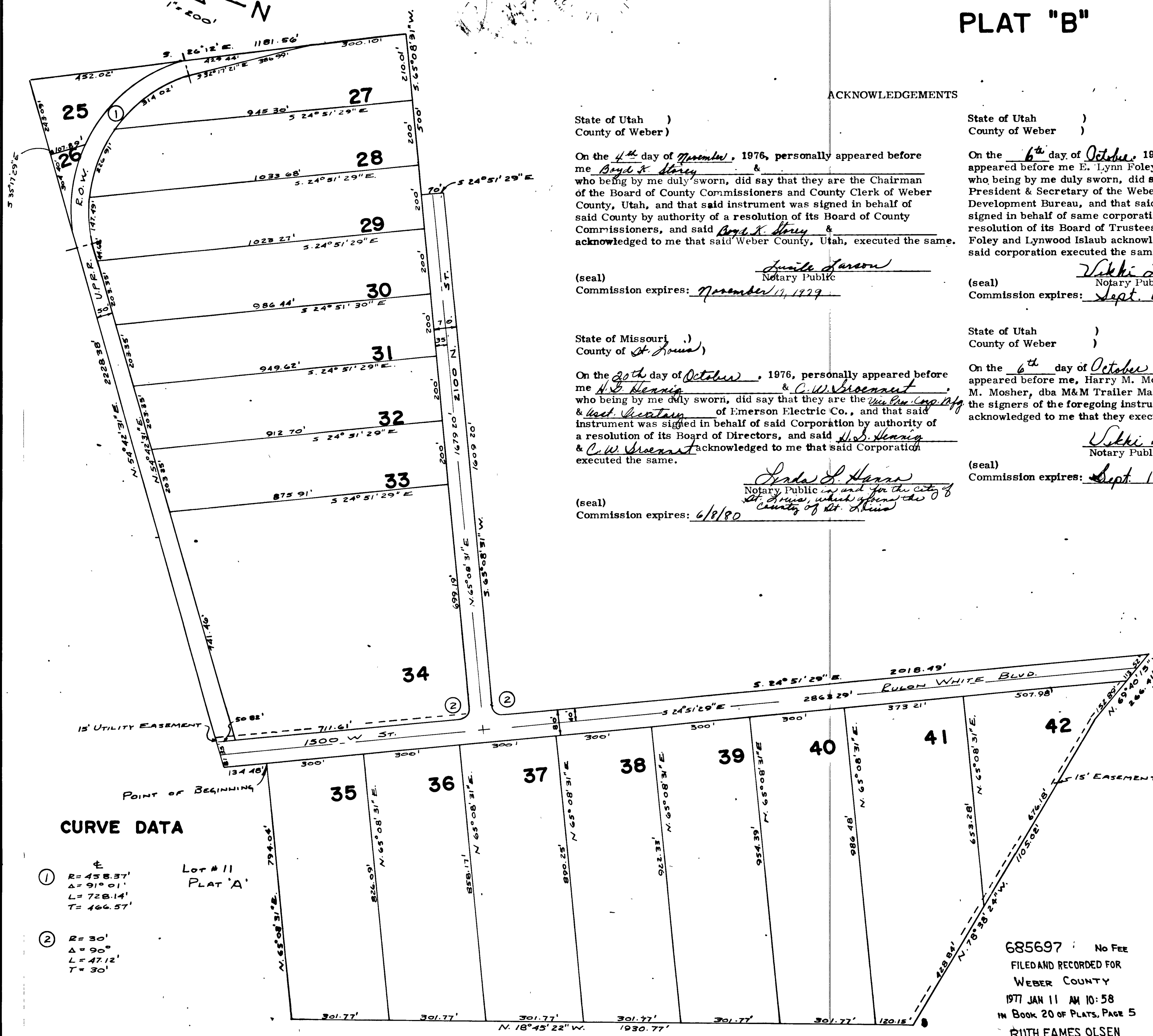


WEBER INDUSTRIAL PARK

A PART OF SEC. 36, T.7N., R.2W.; SEC. 31, T.7N., R.1W.; & SEC. 1, T.6N., R.2W.; S.L.B.&M.
PLAT "B"



CURVE DATA

LOT # 11
PLAT "A"

①
R = 458.37'
Δ = 91° 01'
L = 728.14'
T = 166.57'

②
R = 30'
Δ = 90°
L = 47.12'
T = 30'

ACKNOWLEDGEMENTS

State of Utah)
County of Weber)

On the 4th day of November, 1976, personally appeared before me Boyd A. Henry & James L. Larson, who being by me duly sworn, did say that they are the Chairman of the Board of County Commissioners and County Clerk of Weber County, Utah, and that said instrument was signed in behalf of said County by authority of a resolution of its Board of County Commissioners, and said Boyd A. Henry & James L. Larson acknowledged to me that said Weber County, Utah, executed the same.

(seal) James L. Larson
Notary Public
Commission expires: November 19, 1979

State of Missouri)
County of St. Louis)

On the 20th day of October, 1976, personally appeared before me H.S. Hennig & C.W. Doremont, who being by me duly sworn, did say that they are the Vice Pres. Corp. Mfg. & Asst. Secretary of Emerson Electric Co., and that said instrument was signed in behalf of said Corporation by authority of a resolution of its Board of Directors, and said H.S. Hennig & C.W. Doremont acknowledged to me that said Corporation executed the same.

(seal) H.S. Hennig
Notary Public
Commission expires: 6/8/80

State of Utah)
County of Weber)

On the 6th day of October, 1976, personally appeared before me E. Lynn Foley & Lynnwood Islaub, who being by me duly sworn, did say that they are the President & Secretary of the Weber County Industrial Development Bureau, and that said instrument was signed in behalf of same corporation by authority of a resolution of its Board of Trustees, and said E. Lynn Foley & Lynnwood Islaub acknowledged to me that said corporation executed the same.

(seal) E. Lynn Foley
Notary Public
Commission expires: Sept. 19, 1977

State of Utah)
County of Weber)

On the 6th day of October, 1976, personally appeared before me, Harry M. Mosher & Drucilla M. Mosher, dba M&M Trailer Manufacturers Company, the signers of the foregoing instrument, who duly acknowledged to me that they executed the same.

(seal) Harry M. Mosher
Notary Public
Commission expires: Sept. 19, 1977

SURVEYORS CERTIFICATE
I, Charles R. Kelley, a registered professional engineer in the State of Utah, do hereby certify that this plat of Weber Industrial Park - Plat "B" in Weber County, Utah has been correctly drawn to the designated scale and is a true and correct representation of the following description of lands included in said sub-division, based on data compiled from records in the Weber County Recorder's Office, and of a survey made on the ground.
Signed this 27th day of September, 1976.
License No. 1355 Signature Charles R. Kelley

BOUNDARY DESCRIPTION
A part of Section 36, T7N, R2W; Section 31, T7N, R1W; and Sec. 1, T6N, R2W; S.L.B.&M., beginning at the southeast corner of Lot No. 11, Weber Industrial Park, Sub-division Plat "A", said corner being S. 10° 14' 24" E. 3511.69' from the North 1/4 Corner of Section 36, T7N, R2W, S.L.B.&M; and running thence N. 24° 51' 29" W. 134.48', thence N. 54° 42' 31" E. 2228.38' to the westerly line of the Oregon Shortline Railroad right-of-way, thence along said right-of-way S. 26° 12' E. 1181.56', thence S. 65° 08' 31" W. 500.00'; thence S. 24° 51' 29" E. 70.00'; thence S. 65° 08' 31" W. 1609.20' to a curve to the left whose radius is 30', thence along said curve S. 65° 08' 31" W. 1105.21' to the easterly line of 1500 West Street, thence along said line S. 24° 51' 29" E. 2018.49' to the north bank of the Harrisville Canal, thence along said north bank two courses N. 69° 47' 12" to the easterly line of 1500 West Street, thence along said right-of-way line of the Salt Lake Pipe Line Company, thence along said right-of-way line N. 18° 45' 22" W. 1930.77', thence N. 65° 08' 31" E. 794.04' to the point of beginning. Containing 104.05 Acres.

OWNERS DEDICATION
We the undersigned owners of the hereon described tract of land, hereby set apart and subdivide the same into lots and streets as shown on this plat and name said tract Weber Industrial Park - Plat "B" and hereby dedicate, grant, and convey to Weber County, Utah, all those parts or portions of said tract of land designated as street, the same to be used as public thoroughfares forever, and also dedicate to Weber County those certain strips as easements for public utility and drainage purposes as shown hereon, the same to be used for the installation, maintenance, and operation of public utility service lines and drainage as may be authorized by Weber County.
Signed this 4th day of November, 1976.

WEBER COUNTY, UTAH
Attest: Winiece Hansen
County Clerk
By: Boyd A. Henry
Chairman

EMERSON ELECTRIC CO.
Attest: C.W. Doremont
Its Asst. Secretary
(seal)
By: H.S. Hennig
Its Vice Pres. Corp. Mfg.

M & M TRAILER MANUFACTURERS CO.
By: Harry W. Mosher
Harry W. Mosher
By: Drucilla M. Mosher
Drucilla M. Mosher

WEBER COUNTY INDUSTRIAL DEVELOPMENT BUREAU
Attest: E. Lynn Foley
Secretary
By: E. Lynn Foley
President

COUNTY APPROVAL
This is to certify that this plat and dedication of this plat were duly approved and accepted by the County Commission of Weber County, Utah this 21st day of DECEMBER, 1976.
Attest: Norm Stetterson
Title Deputy County Clerk
By: Keith S. Jensen
Title Acting Chairman

WEBER COUNTY PLANNING COMMISSION
Approved by the Weber County Planning Commission on the 9th day of NOVEMBER, 1976.
Norman Schmell
Chairman

COUNTY ATTORNEY
I have examined the proposed plat of Weber Industrial Park No. 1 and in my opinion it conforms with the County Ordinance applicable thereto and now in force and effect:
Robert L. Penney
County Attorney

COUNTY ENGINEER
I hereby certify that I have carefully investigated the lines of survey of the foregoing plat and legal description of the land embraced therein, and find them to be correct and to agree with the lines and monuments on records in this office.
Signed this 9th day of December, 1976.
Fred W. Malan
County Engineer

685697 No Fee
FILED AND RECORDED FOR
WEBER COUNTY
1977 JAN 11 AM 10:58
IN BOOK 20 OF PLATS, PAGE 5
RUTH EAMES OLSEN
WEBER COUNTY RECORDER
DEPUTY Gene Vaughn