

APPLICATION FOR A DAM NOT REQUIRING SUBMISSION OF FORMAL PLANS UNDER SECTION 73-5A-502 STATE OF UTAH

Received / / Entered / / Application No - -

The following application is submitted pursuant to Section 73-5a-204

1. APPLICANT INFORMATION

Name(s): Reeve & Assoc. Telephone: 801-621-3100
Address: 920 Chambers, Suite 14
City: Ogden State: UT Zip Code: 84403

2. PURPOSE OF RESERVOIR

Stock Pond _____ Flood Control _____ Recreation _____
Irrigation _____ Debris Basin _____ Fishery _____
Regulating Reservoir _____ Sedimentation _____ Wildlife _____
Diversion Dam _____ Evaporation _____ Tailings _____
Other (describe) Storm Water Detention

3. LEGAL LOCATION OF DAM

County Weber Quarter/Quarter SW of SW Section 13
Township 6N Range 1E Base & Meridian SLB & M

4A. FOR DAMS BUILT ON A NATURAL STREAM OR DRAINAGE

Name of Natural Stream or Drainage N/A
OR Drainage Area above dam Adjacent to Pineview Reservoir (square miles)
Distance below dam to nearest structure occupied by humans N/A (miles)

4B. FOR DAMS BUILT OFF- CHANNEL

Source of Water (ie: well, canal, ditch, etc.) Storm Drainage from residential development
Capacity of source to reservoir 20,600 C.F. or 177 AcFt (cubic feet per second)
Distance below dam to nearest structure occupied by humans 10± (miles)

5. DIMENSIONS OF DAM

Height (vertical) 7 feet Length (at top) 160 feet Width (at top) 95 feet
Upstream Slope 3 Horizontal on 1 Vertical
Downstream Slope 3 Horizontal on 1 Vertical
Surface Area at Spillway Crest 0.093 (acres) Capacity at Spillway Crest .000137 (acre-feet)
Type of Dam (ie: earthfill, concrete, masonry, rockfill, etc.) earthfill

6. LOW LEVEL OUTLET

Inside diameter of outlet 18" (inches) Total outlet length 75 (feet)
Type of Pipe ADS Type of gate or valve 7.2" orifice w/ overflow within structure
Location of gate or valve (ie: upstream, downstream, center, etc.) upstream
Outlet capacity with gate open and reservoir at maximum capacity 2.43 (cubic feet per second)

7. SPILLWAY

Crest Length (width of spillway) 6' (feet) Depth (bottom of spillway to top of dam) 1.5 (feet)
Type of Spillway (ie: earth channel, pipe, concrete, rock channel, concrete)
Spillway capacity with water at top of dam 14.4 (cubic feet per second)
Control (i.e. gates, flashboards, etc.) NONE

8. **WATER RIGHTS**

Describe: Storm Runoff from residential development

9. **COMMENTS**

This a small detention basin for a small residential development releasing water into Pine View Reservoir at a controlled rate. There are no structures between the detention basin and the reservoir.


10. **PLANS**

The following drawings, including appropriate scales and dimensions, must be attached to the application:

- 1) A location map, such as a 7.5 minute USGS Quad Map, showing the exact location of the dam
- 2) A plan view of the dam and reservoir including the location of the spillway, outlet, and channel or supply source.
- 3) A profile of the dam along the centerline of the dam showing the natural ground, the top of the dam, and the depth to clearing, keyway bottom or cutoff trench.
- 4) A Cross Section of the dam through the outlet showing the location of the outlet and the types of materials the dam is to be constructed of.
- 5) Details of the spillway, outlet, drains, gates or valves, or other features of the dam or appurtenant structures.

The undersigned acknowledge they have read the instructions included with this application, and are aware no construction is to begin until this application has been approved by the Utah State Engineer.

12/11/13
Date


Signature

- For Office Use Only -

Water Rights in Order By _____ Date _____

Water Right Numbers if Applicable _____

Regional Engineer's Hazard Rating (High, Moderate, Low) _____

Reviewed by Dam Safety By _____ Date _____

Estimated Breach Flow at Dam _____ (cubic feet per second)

Comments _____

Date of Approval

State Engineer or Dam Safety Director

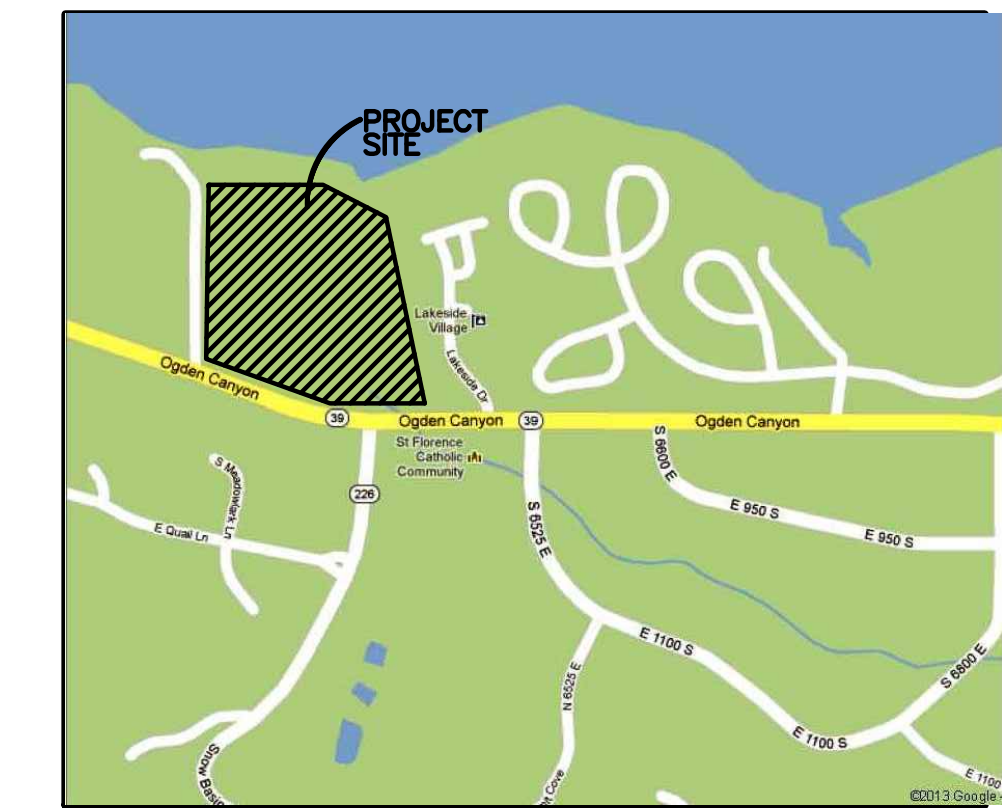
Project Narrative/Notes/Revisions

- 1) 3/18/13 CA - DESIGN CHANGES.
- 2) 6/24/13 CA - COUNTY ENGINEERS/ROAD WAY CHANGES.
- 3) 7/3/13 RH - COUNTY ENGINEERS/ROAD WAY CHANGES.
- 4) 8/16/13 RH - COUNTY ENGINEERS COMMENTS.
- 5) 9/19/13 RH - COUNTY ENGINEERS COMMENTS.
- 6) 10/21/13 RH - SEWER SYSTEM REVISIONS.
- 7) 11/22/13 RH - COUNTY COMMENTS.

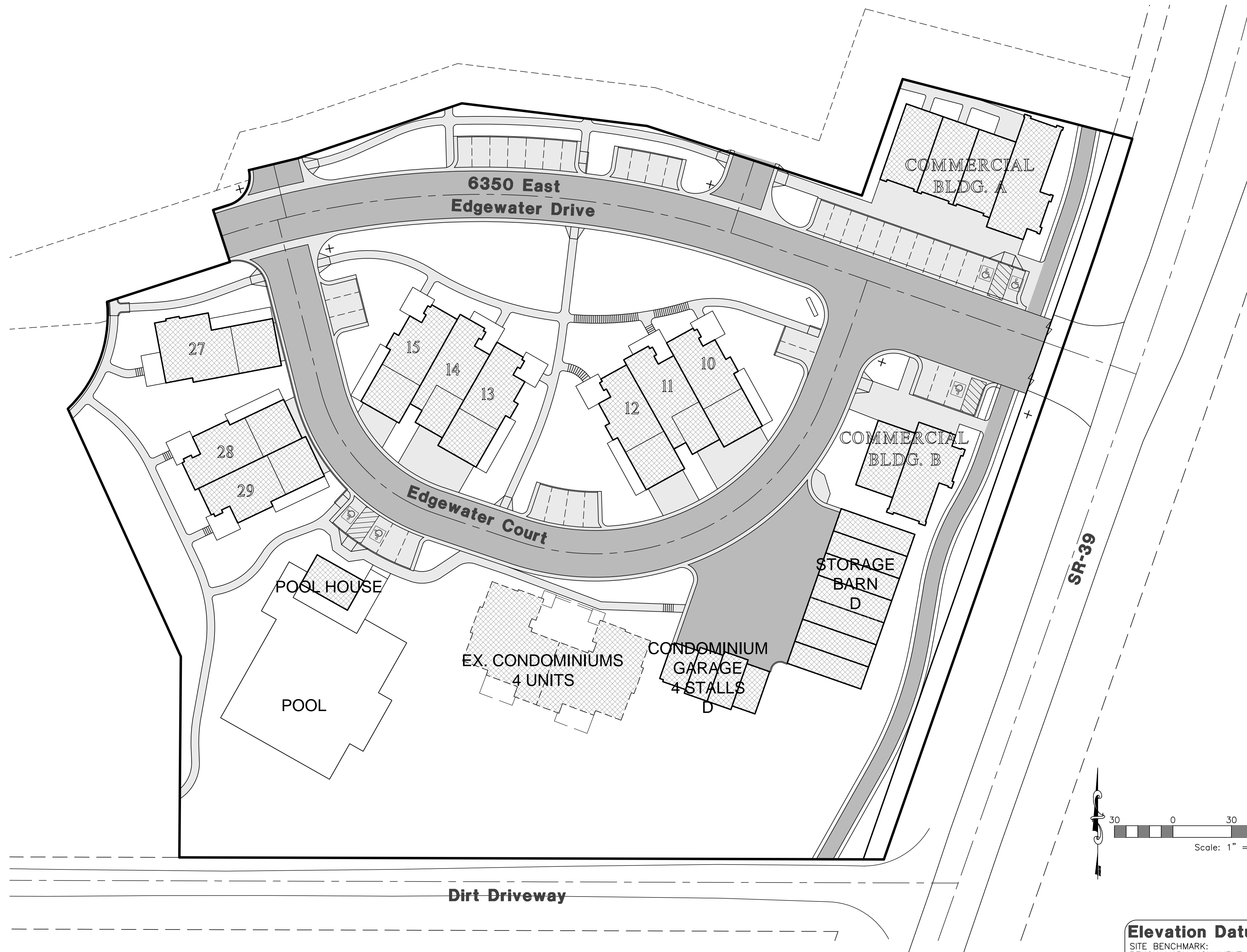
EDGEWATER ESTATES

Phase-1 Improvement Plans

WEBER COUNTY, UTAH
AUGUST 2013



Vicinity Map
NOT TO SCALE

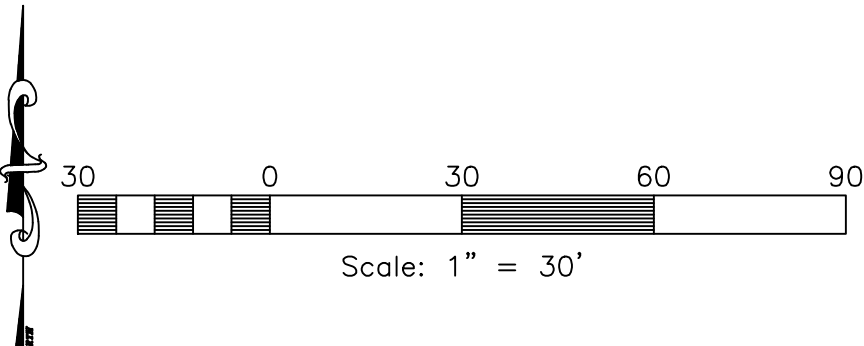


Sheet Index

- Sheet 1 - Cover/Index Sheet
- Sheet 2 - Demolition Plan
- Sheet 3 - Edgewater Drive 20+00.00 - 24+49.74
- Sheet 4 - Edgewater Drive 24+49.74 - 29+50.00
- Sheet 5 - Edgewater Court 15+00.00 - 21+00.00
- Sheet 6 - Drainage & Grading Plan
- Sheet 7 - Utility Plan
- Sheet 8 - SD Calculations
- Sheet 9 - Details
- Sheet 10 - Rock Wall Details
- Sheet 11 - SWPPP
- Sheet 12 - SWPPP Details

General Notes

1. CONSTRUCTION STAKING TO BE PROVIDED BY REEVE & ASSOCIATES, INC.
2. ANY MODIFICATION TO THIS CONSTRUCTION PACKAGE OR TO THE CONSTRUCTION SCHEDULE SHALL BE APPROVED BY THE ENGINEER PRIOR TO SAID APPROVAL, ALL IMPROVEMENT DRAWINGS SHALL BE RESUBMITTED AND APPROVED BY THE ARCHITECT.
3. THE CONTRACTOR SHALL LOCATE, RETAIN AND PROTECT ALL EXISTING UTILITIES UNLESS OTHERWISE DIRECTED BY THE OWNER OR OWNER'S REPRESENTATIVE.
4. THE CONTRACTOR SHALL MAINTAIN 10 FOOT HORIZONTAL AND 18 INCH VERTICAL SEPARATION, CULINARY WATER LINES, SANITARY SEWER, AND STORM DRAIN LINES.
5. THE CONTRACTOR SHALL INSTALL ALL SANITARY SEWER MAINS, SERVICE LINES AND STORM DRAIN LINES PRIOR TO INSTALLING ANY WATER SYSTEM IMPROVEMENTS. ADJUST WATER MAIN DEPTH PER JURISDICTION AS REQUIRED TO AVOID SANITARY SEWER SERVICE LINES.
6. CONTRACTOR SHALL NOTIFY ARCHITECT OF ALL UTILITY CONFLICTS UPON DISCOVERY.
7. CONTRACTOR SHALL COORDINATE CONSTRUCTION AND INSTALLATION OF ELECTRICAL, TELEPHONE, NATURAL GAS AND CABLE TV SERVICES WITH THE RESPECTIVE UTILITY COMPANY. OWNER SHALL PAY ALL ASSOCIATED UTILITY COMPANY FEES.
8. CONTRACTOR SHALL BE RESPONSIBLE FOR PROPER SLOPE AND CONSTRUCTION OF CONNECTING SEWER PIPING.
9. CONTRACTOR SHALL BE RESPONSIBLE OF PROPER BACKFILLING, COMPACTING, AND PAVEMENT RESTORATION.
10. CONTRACTOR TO OBTAIN ALL NECESSARY PERMIT(S) AND COMPLY WITH ALL PERMITTING REQUIREMENTS.
11. ALL THRUST BLOCKS SHALL BE POURED IN PLACE AGAINST UNDISTURBED SOIL. ALL VALVES, FITTINGS, AND APPURTENANCES TO BE BLOCKED.
12. ALL EXPOSED NUTS AND BOLTS WILL BE COATED WITH A NON-OXIDE WASH AND WRAPPED IN 8-MIL POLYETHYLENE AS DIRECTED BY GEOTECHNICAL STUDY.
13. CONTRACTOR SHALL BE RESPONSIBLE FOR DUST CONTROL ACCORDING TO GOVERNING AGENCIES STANDARDS. WET DOWN DRY MATERIALS AND RUBBISH TO PREVENT BLOWING.
14. CONTRACTOR SHALL BE RESPONSIBLE FOR ANY DAMAGE TO ADJACENT SURFACE IMPROVEMENTS DURING CONSTRUCTION.
15. CONTRACTOR SHALL BE RESPONSIBLE FOR CORRECTING ANY SETTLEMENT OF OR DAMAGE TO EXISTING UTILITIES FOR WARRANTY PERIOD.
16. ALL EXISTING ASPHALT SHALL BE SAW CUT IN NEAT STRAIGHT LINES BY THE CONTRACTOR PRIOR TO EXCAVATION.
17. CONTRACTOR TO INSTALL MAGNETIC LOCATING TAPE CONTINUOUSLY OVER ALL PVC PIPING.
18. THE CONTRACTOR IS RESPONSIBLE TO FURNISH ALL MATERIALS TO COMPLETE PROJECT.
19. TRAFFIC CONTROL IS TO CONFORM TO THE CURRENT CITY AND/OR STATE TRANSPORTATION ENGINEERS' MANUAL.
20. A UPDES GENERAL CONSTRUCTION STORM WATER PERMIT MUST BE OBTAINED BY THE GENERAL CONTRACTOR PRIOR TO COMMENCING CONSTRUCTION.
21. ALL WORK SHALL CONFORM TO WEBER COUNTY STANDARD SPECIFICATIONS AND DRAWINGS.



Elevation Datum

SITE BENCHMARK:
BENCH MARK MONUMENT NO. 3-JRH
ELEVATION 4969.025

Engineer's Notice To Contractors

THE EXISTENCE AND LOCATION OF ANY UNDERGROUND UTILITY PIPES OR STRUCTURES SHOWN ON THESE PLANS WERE OBTAINED FROM AVAILABLE INFORMATION PROVIDED BY OTHERS. THE LOCATIONS SHOWN ARE APPROXIMATE AND SHALL BE CONFIRMED IN THE FIELD BY THE CONTRACTOR, SO THAT ANY NECESSARY ADJUSTMENT CAN BE MADE IN ALIGNMENT AND/OR GRADE OF THE PROPOSED IMPROVEMENT. THE CONTRACTOR IS REQUIRED TO CONTACT THE UTILITY COMPANIES AND TAKE DUE PRECAUTIONARY MEASURE TO PROTECT ANY UTILITY LINES SHOWN, AND ANY OTHER LINES OBTAINED BY THE CONTRACTOR'S RESEARCH, AND OTHERS NOT OF RECORD OR NOT SHOWN ON THESE PLANS.

Contact:

REESE HOWELL, JR.
CELTIC BANK 268 S. STATE
STREET, UT. 84111
PH: (801) 363-6500

Blue Stakes Location Center

Call: Toll Free
1-800-662-4111
Two Working Days Before You Dig

Reeve & Associates, Inc.
920 CHAMBERS STREET, SUITE #14, OGDEN, UTAH 84403
TEL: (801) 621-2100 FAX: (801) 621-2666 www.reeve-assoc.com
LAND PLANNERS • CIVIL ENGINEERS • LAND SURVEYORS
TRAFFIC ENGINEERS • STRUCTURAL ENGINEERS • LANDSCAPE ARCHITECTS

REVISIONS	DATE	DESCRIPTION
	3-14-13	CA Design Complete
	6-21-13	RH Co. Eng. Review
	7-3-13	RH Co. Eng. Review
	8-16-13	RH Co. Eng. Review
	9-19-13	RH Co. Eng. Review
	10-21-13	RH Sewer Revisions
	11-22-13	RH County Comments

Edgewater Beach Resort
Phase-1
WEBER COUNTY, UTAH
Cover/Index Sheet

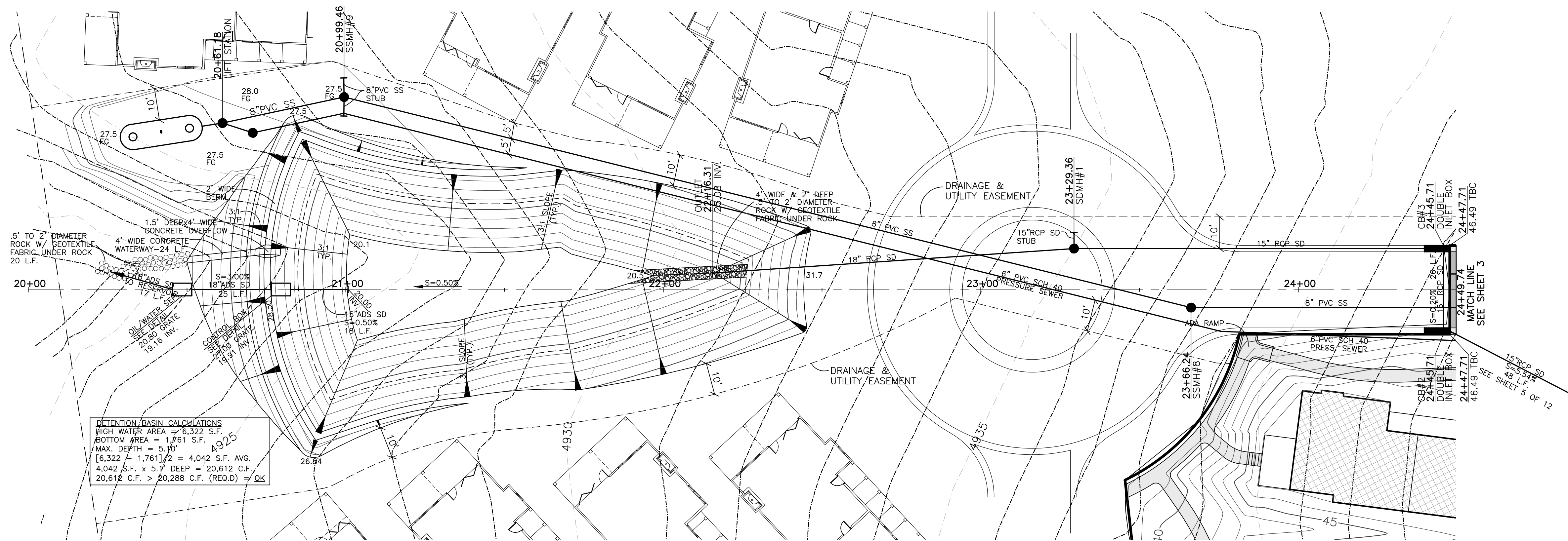
Revised 11-22-13



Project Info.

Engineer:	J. NATE REEVE, P.E.
Drafter:	R. HANSEN
Begin Date:	JULY 09, 2012
Name:	EDGEWATER BEACH RESORT PHASE-1
Number:	5917-15

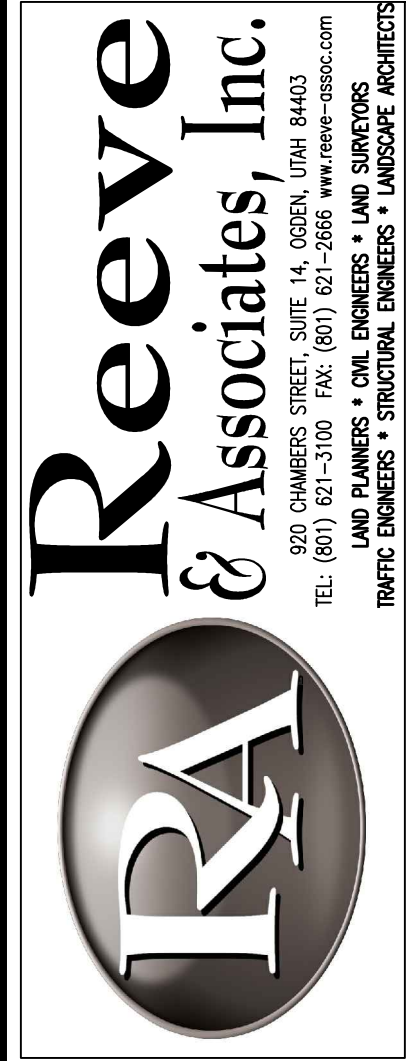
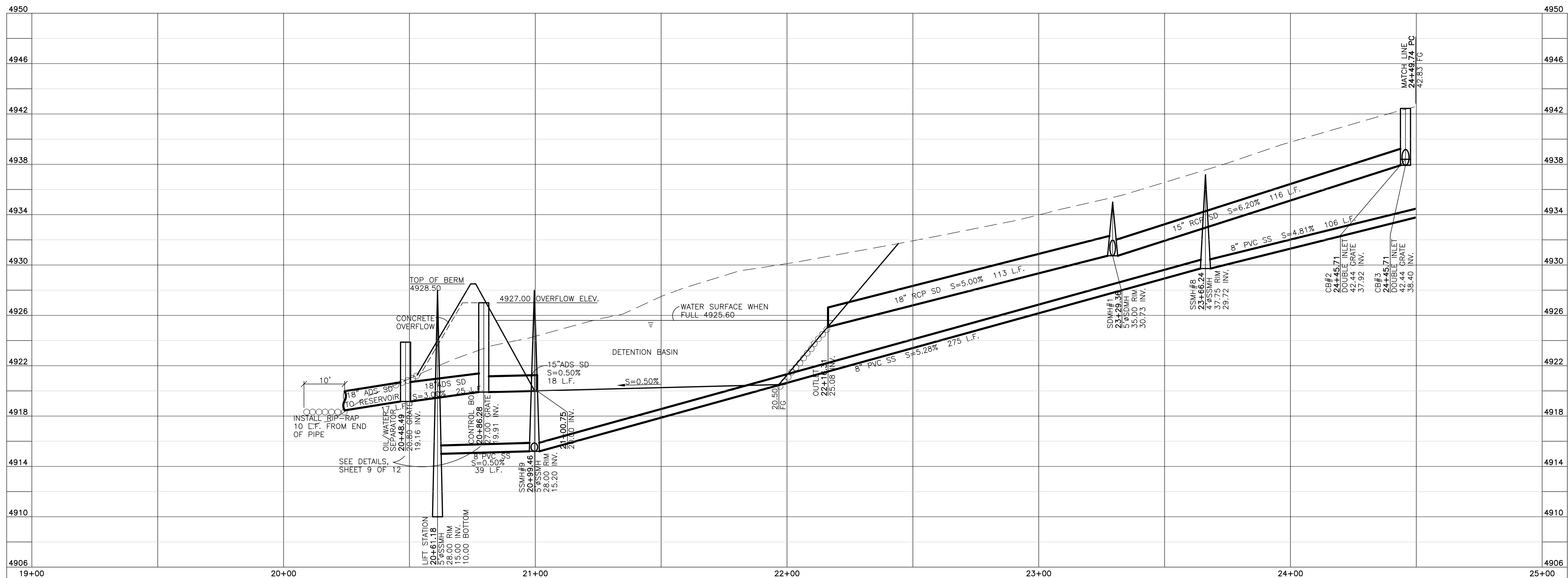
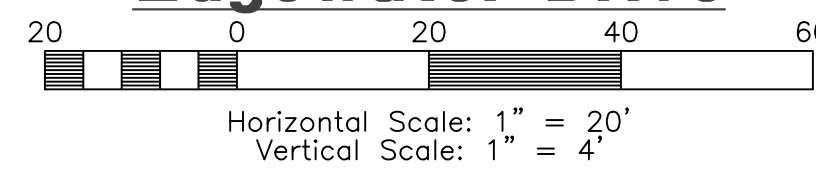
Sheet	12
1	Sheets



DETENTION BASIN CALCULATIONS
 HIGH WATER AREA = 6,322 S.F.
 BOTTOM AREA = 1,761 S.F.
 MAX. DEPTH = 5.10'
 (6,322 ÷ 1,761) ÷ 2 = 4,042 S.F. AVG.
 4,042 S.F. x 5.1' DEEP = 20,612 C.F.
 20,612 C.F. > 20,288 C.F. (REQ.D) = OK

NOTE:
 CONSTRUCTION OF DETENTION BASIN WILL
 COMPLY TO 2012 AWWA SPECIFICATIONS.

Edgewater Drive



REVISIONS	DATE	DESCRIPTION
3-14-13	CA	Design Complete
6-21-13	RH	Co. Eng. Review
7-3-13	RH	Co. Eng. Review
8-16-13	RH	Co. Eng. Review
9-19-13	RH	Co. Eng. Review
10-21-13	RH	Sewer Revisions
11-22-13	RH	County Comments

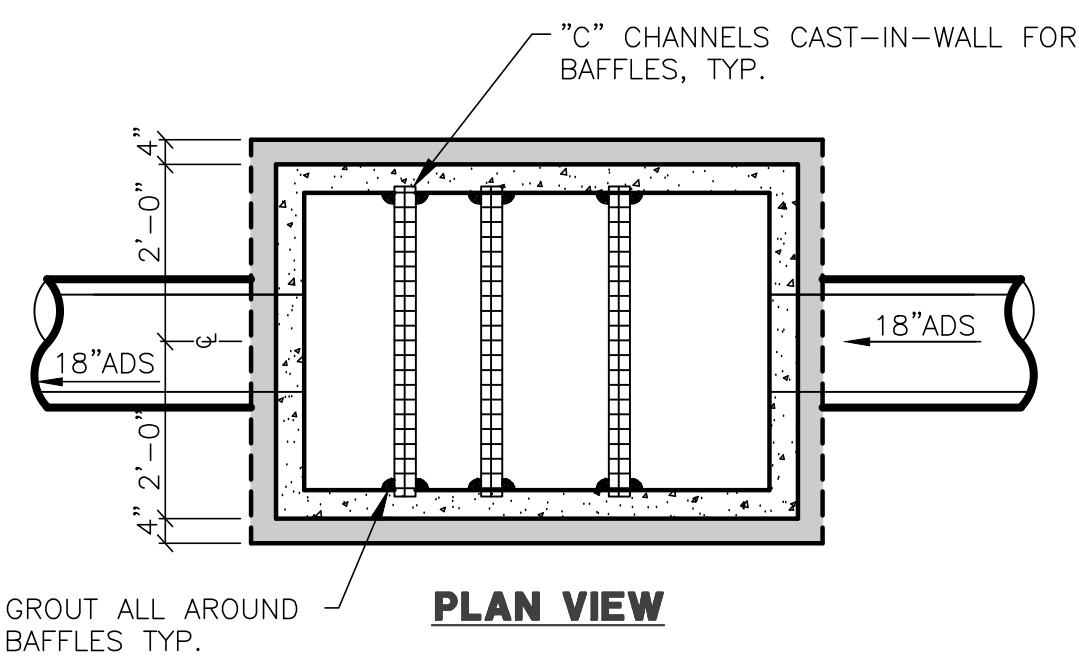
Edgewater Beach Resort
Phase-1
 WEBER COUNTY, UTAH
Edgewater Drive
20+00.00 - 24+49.74

Revised 11-22-13

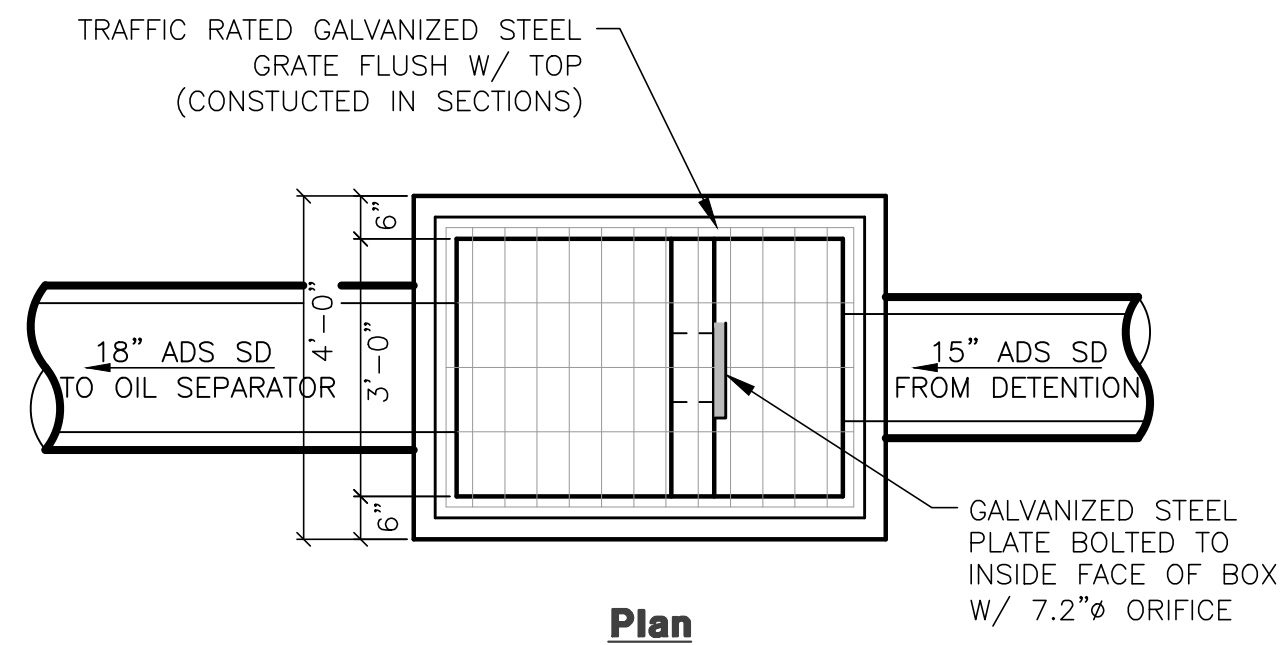


Project Info.
 Engineer: J. NATE REEVE, P.E.
 Drafter: R. HANSEN
 Begin Date: JULY 09, 2012
 Name: EDGEWATER BEACH RESORT PHASE-1
 Number: 5917-15

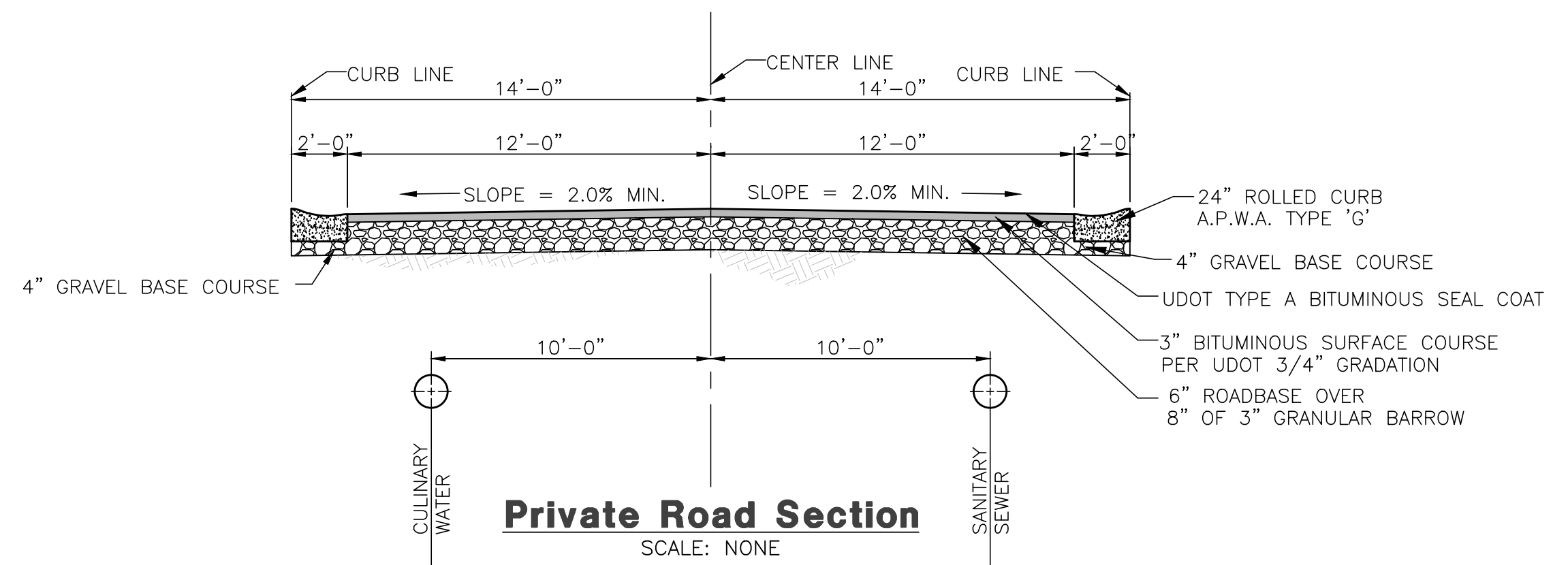
Sheet **12**
 3 Sheets



PLAN VIEW

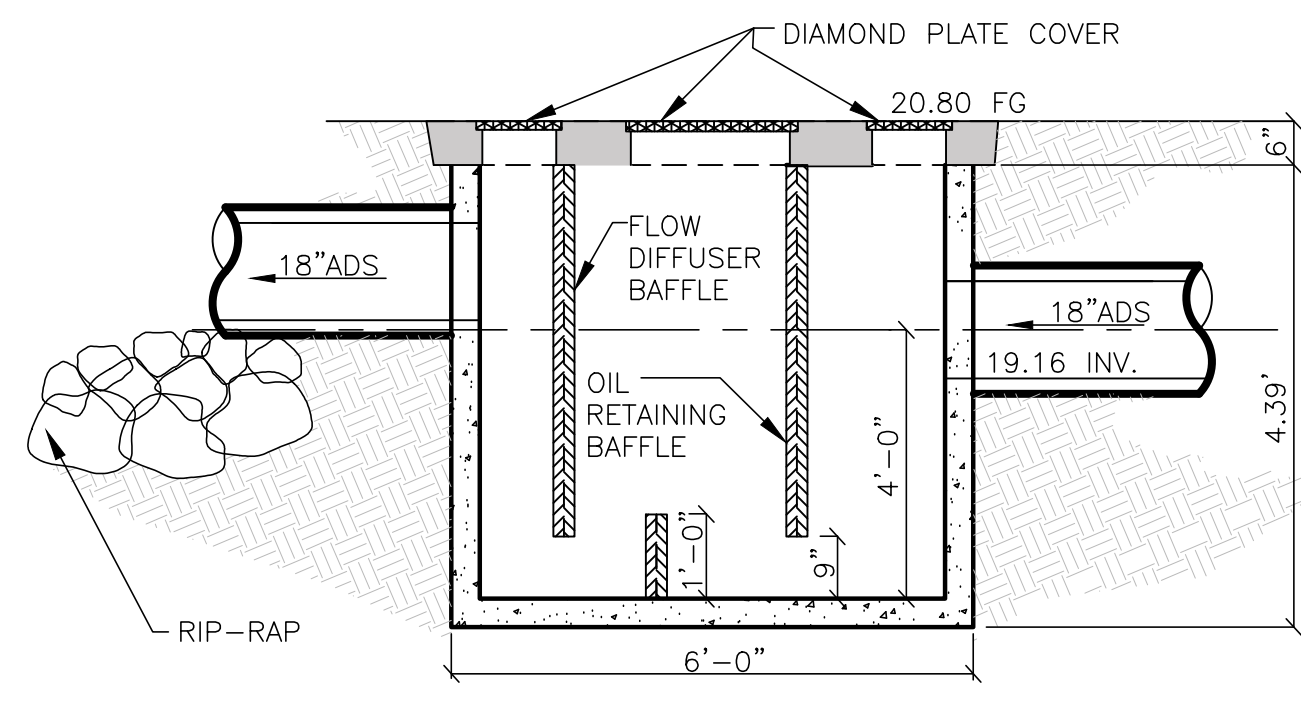


Plan



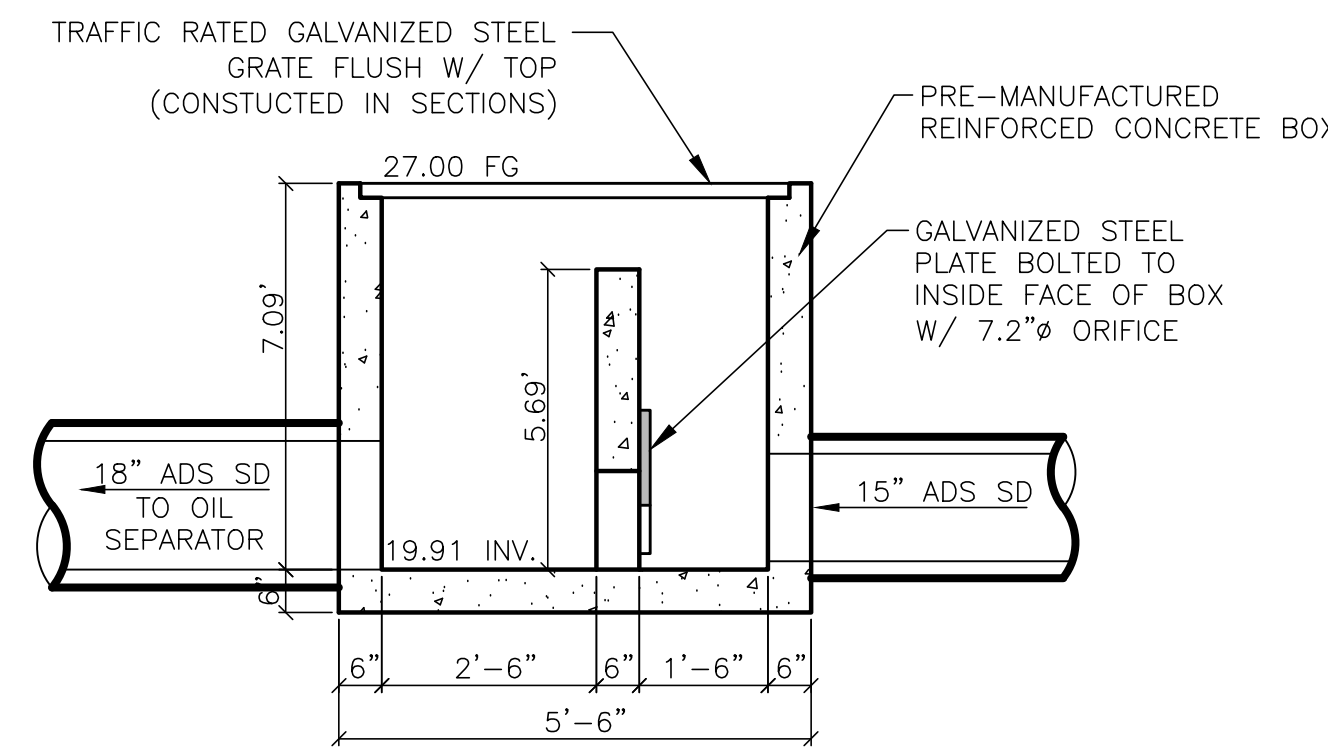
Private Road Section

SCALE: NONE



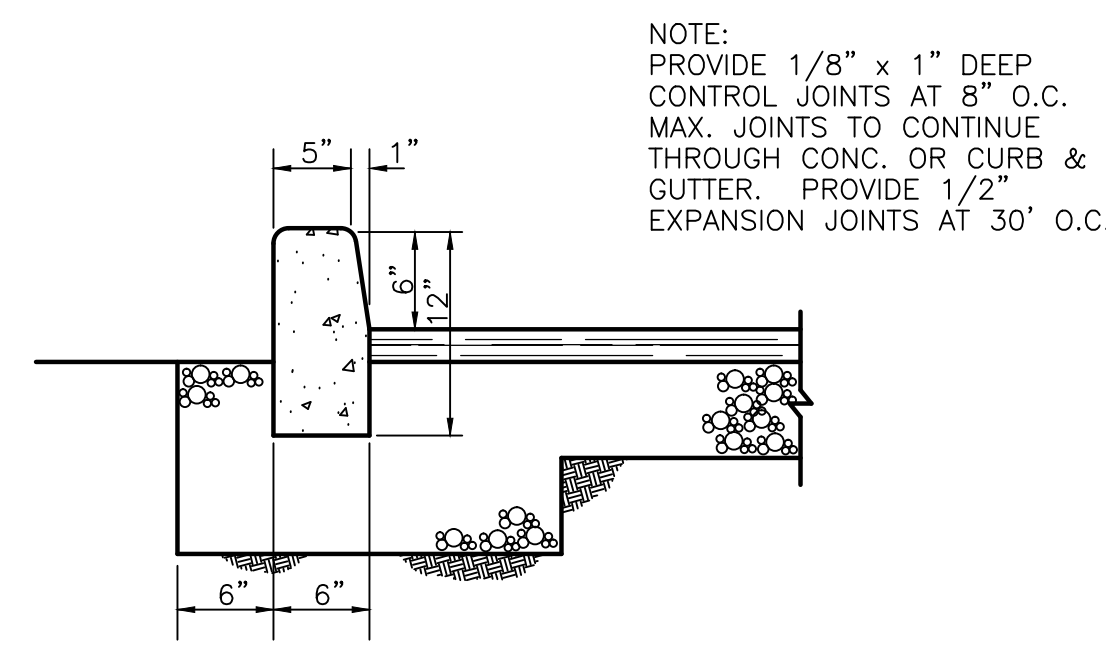
Oil Separator

SCALE: NONE



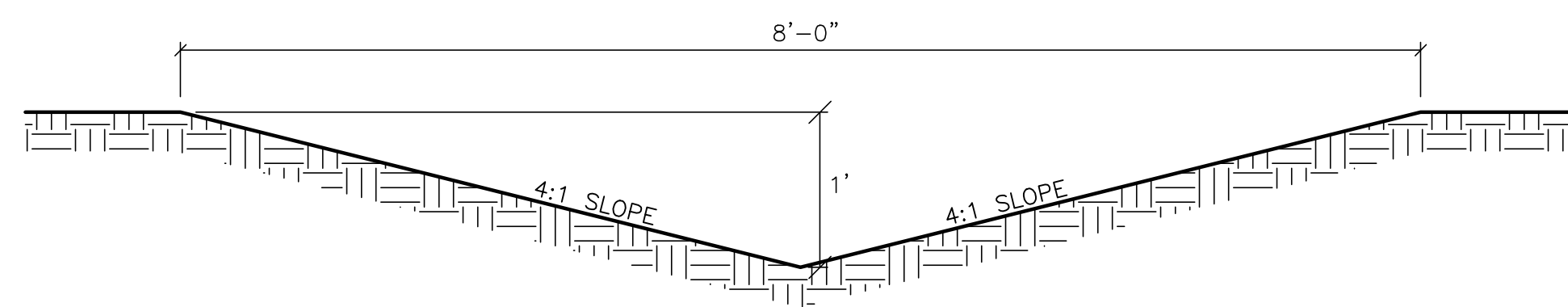
Section

Detention Basin Control Box



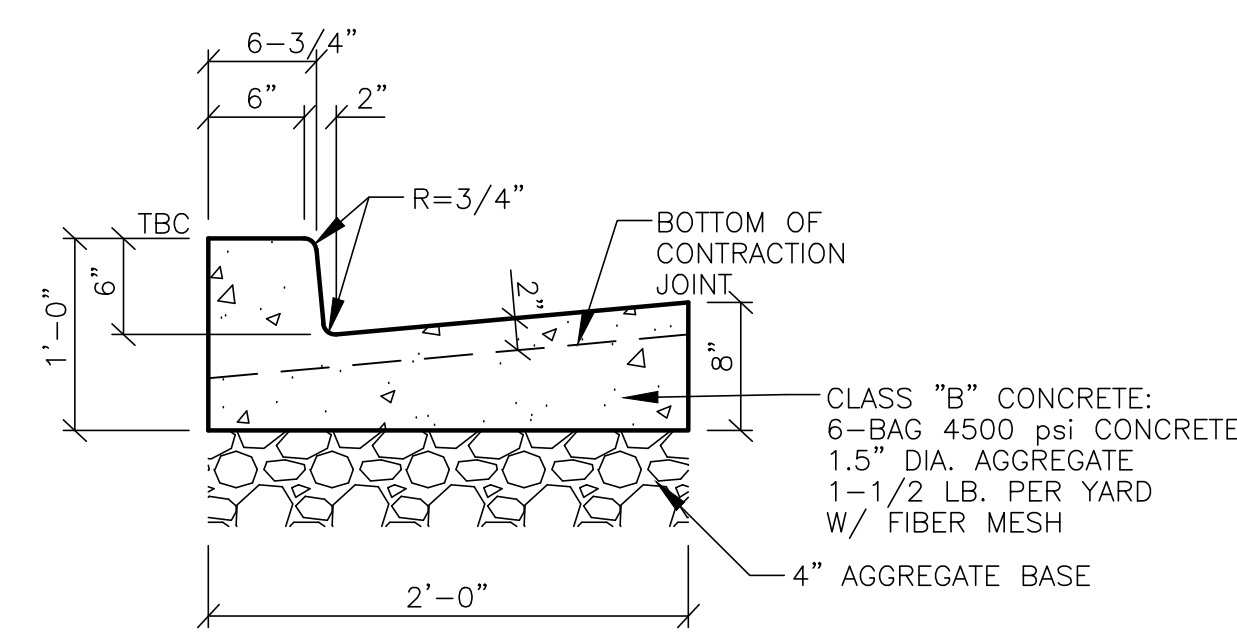
Curb Detail

SCALE: NONE



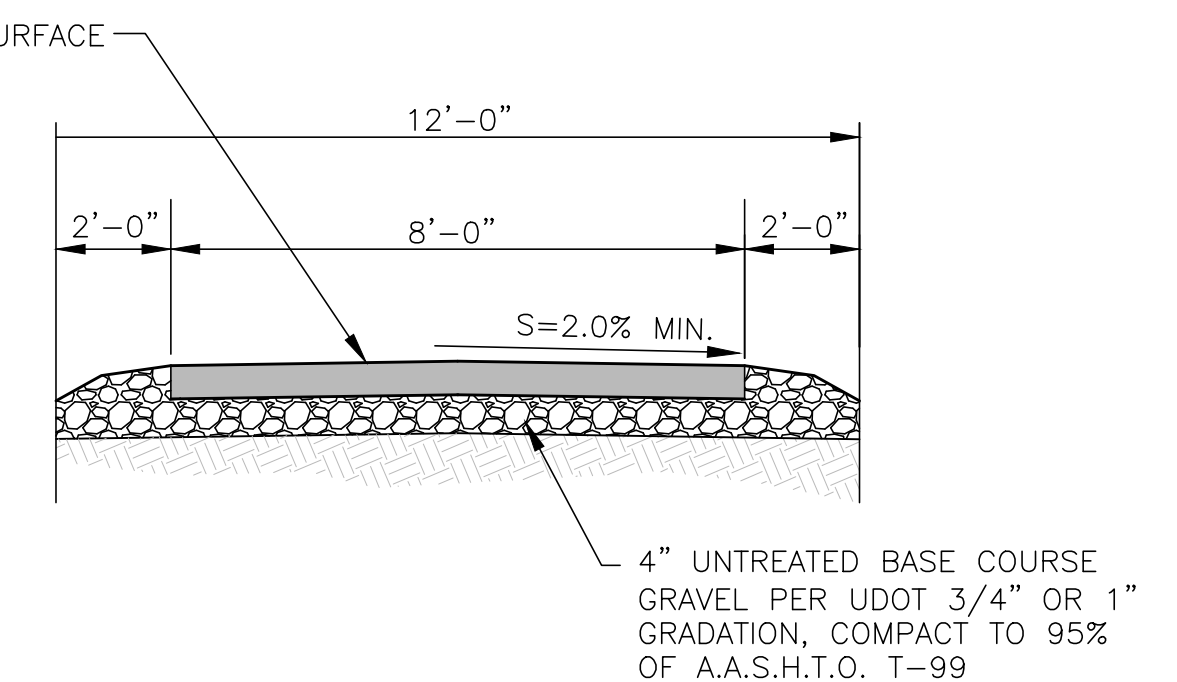
Swale Detail

SCALE: NONE



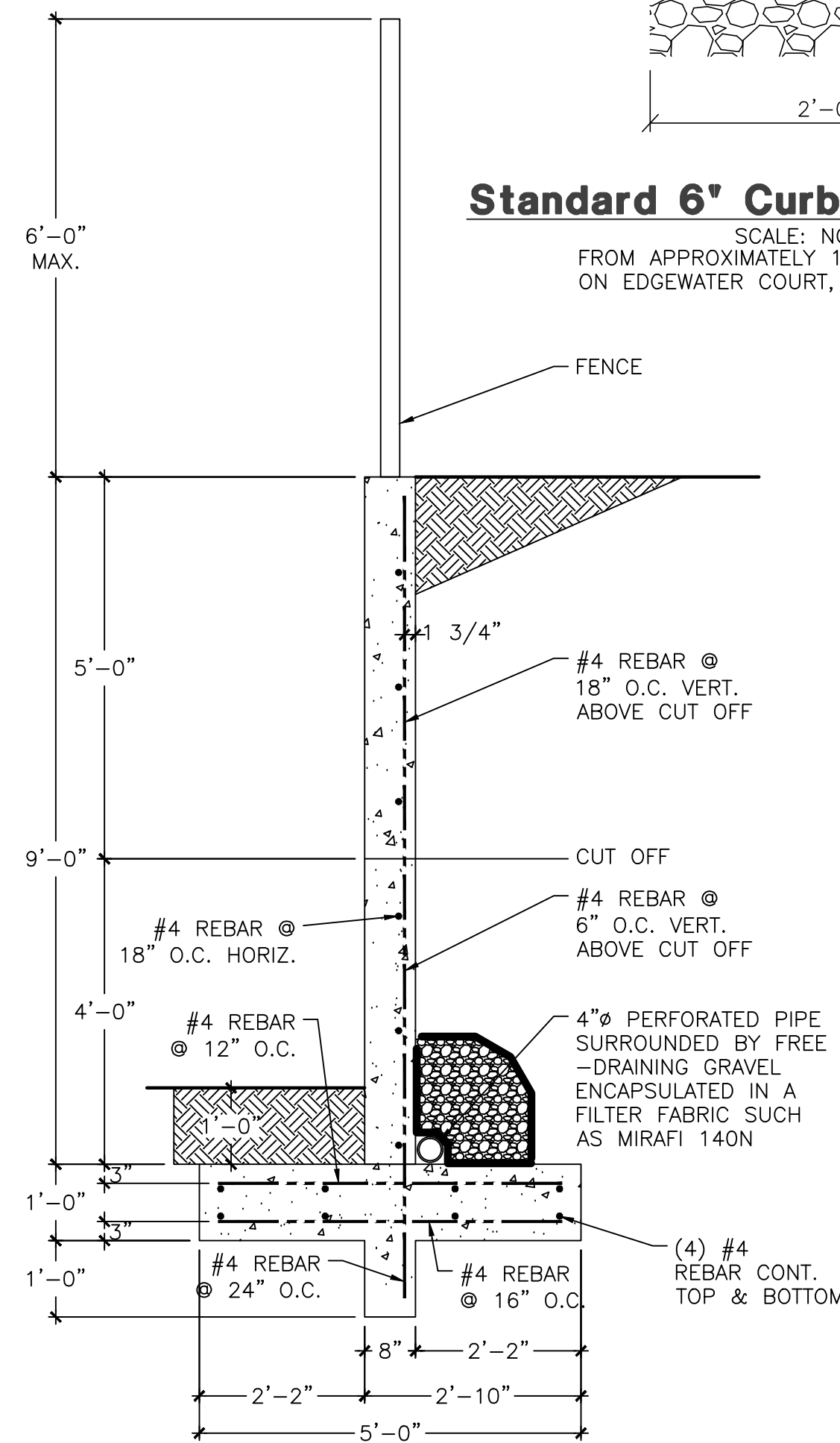
Standard 6' Curb & Gutter Detail

SCALE: NONE FROM APPROXIMATELY 16+00 TO 17+00 ON EDGEWATER COURT, NORTHWEST SIDE.



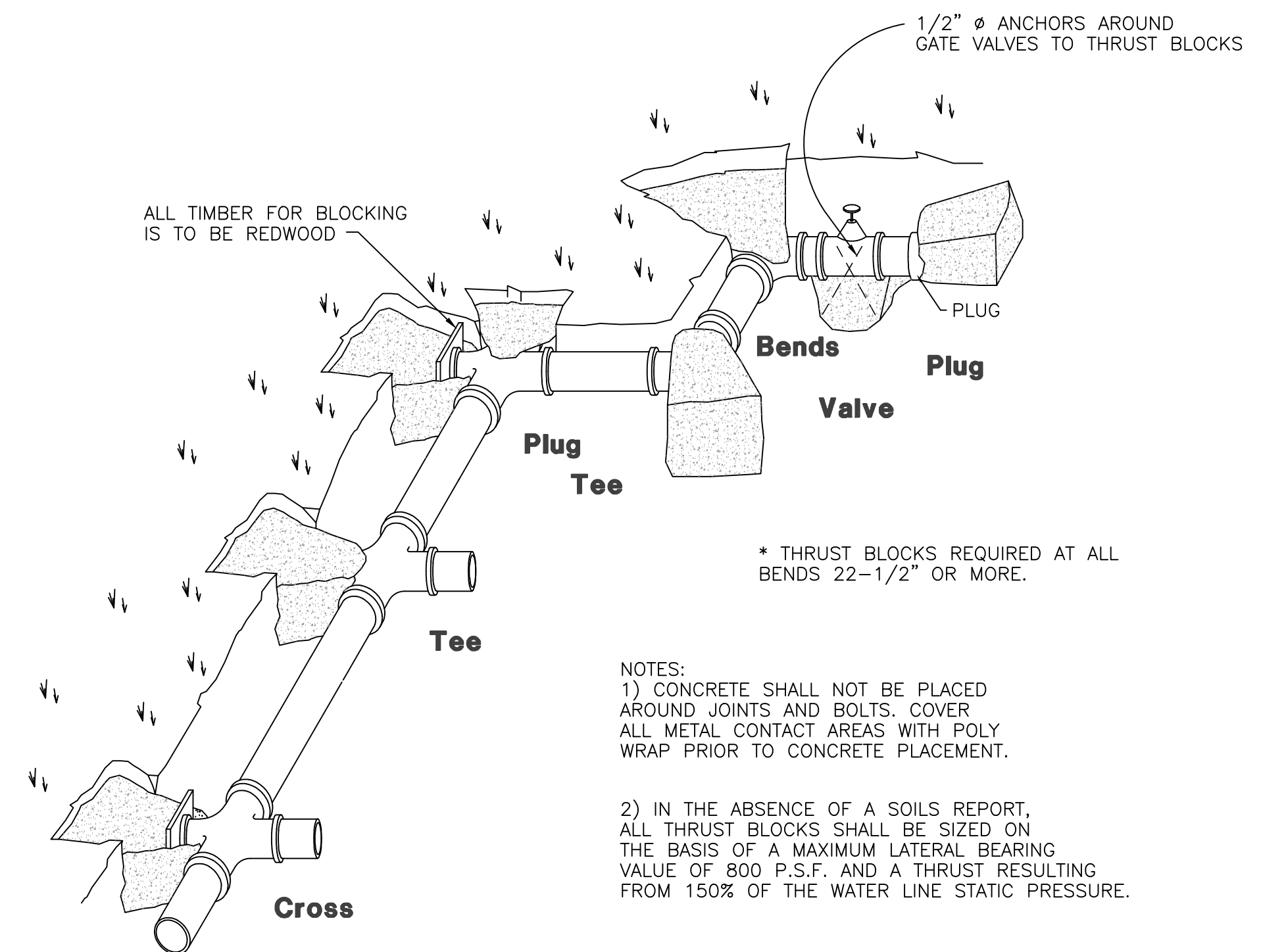
Pathway Detail

SCALE: NONE



6' to 8' Concrete Retaining Wall

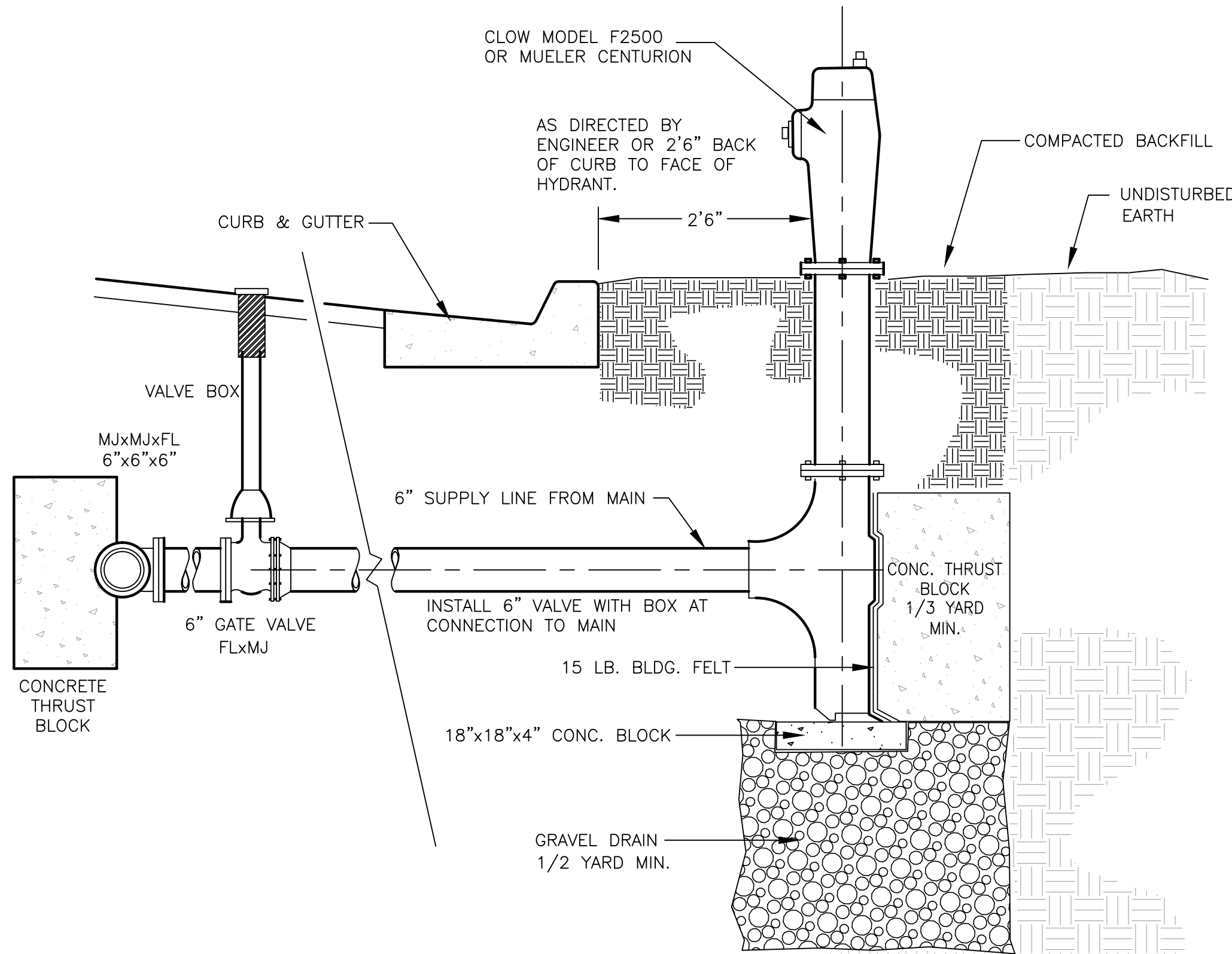
SCALE: NONE



Thrust Block Detail

SCALE: NONE

NOTES:
1) CONCRETE SHALL NOT BE PLACED AROUND JOINTS AND BOLTS. COVER ALL METAL CONTACT AREAS WITH POLY WRAP PRIOR TO CONCRETE PLACEMENT.
2) IN THE ABSENCE OF A SOILS REPORT, ALL THRUST BLOCKS SHALL BE SIZED ON THE BASIS OF A MAXIMUM LATERAL BEARING VALUE OF 800 P.S.F. AND A THRUST RESULTING FROM 150% OF THE WATER LINE STATIC PRESSURE.



Fire Hydrant Detail

SCALE: NONE

Reeve & Associates, Inc.
920 CHAMBERS STREET, SUITE #14, OGDEN, UTAH 84403
TEL: (801) 921-3100 FAX: (801) 921-3666 www.reeve-assoc.com
LAND PLANNERS • CIVIL ENGINEERS • LAND SURVEYORS
TRAFFIC ENGINEERS • STRUCTURAL ENGINEERS • LANDSCAPE ARCHITECTS

REVISIONS	DATE	DESCRIPTION
3-14-13	CA	Design Complete
6-21-13	RH	Co. Eng. Review
7-3-13	RH	Co. Eng. Review
8-16-13	RH	Co. Eng. Review
9-19-13	RH	Co. Eng. Review
10-21-13	RH	Sewer Revisions
11-22-13	RH	County Comments

Edgewater Beach Resort Phase-1
WEBER COUNTY, UTAH
Civil Details

Revised 11-22-13

Project Info.

Engineer:	J. NATE REEVE, P.E.
Drafter:	R. HANSEN
Begin Date:	JULY 09, 2012
Name:	EDGEWATER BEACH RESORT PHASE-1
Number:	5917-15

Sheet	12
9	Sheets