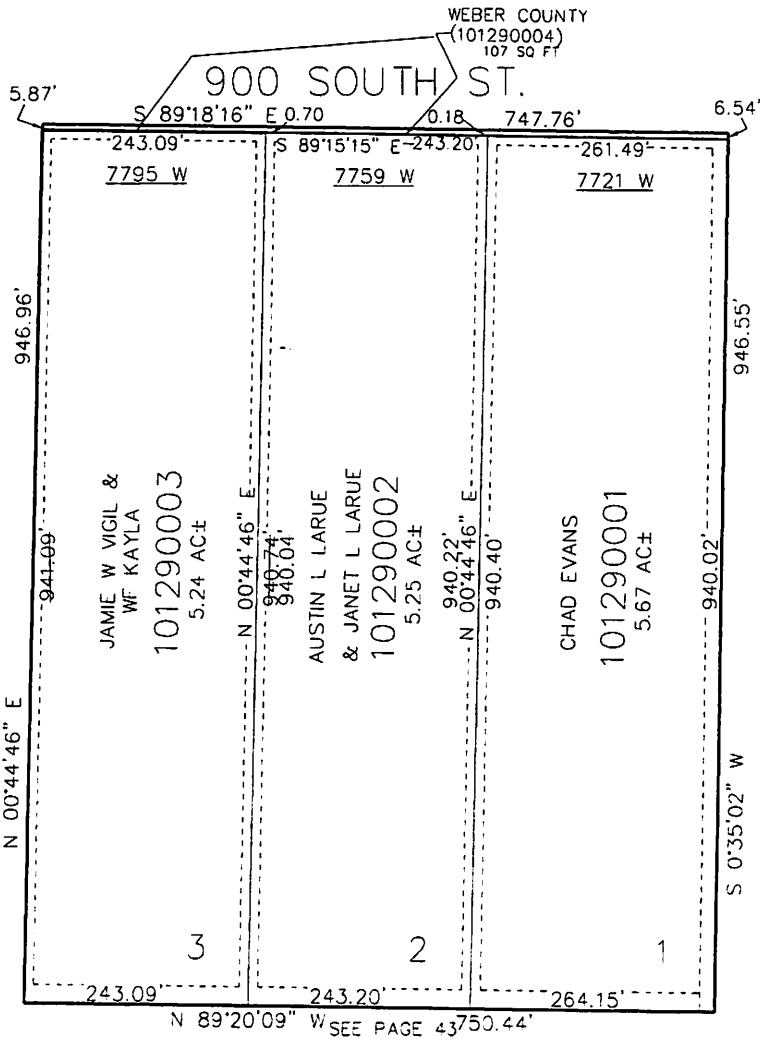


PART OF THE NE.1/4, OF SECTION 22, T.6N., R.3W., S.L.B. & M.  
**CLASSIC ACRES SUBDIVISION**

TAXING UNIT: 303

IN WEBER COUNTY  
 SCALE 1" = 100'

SEE PAGE 43



10' UTILITY & DRAINAGE EASEMENTS EACH SIDE OF PROPERTY LINES AS INDICATED BY DASHED LINES EXCEPT AS OTHERWISE SHOWN.

FOR COMPLETE ENG DATA SEE ORIGINAL DEDICATION PLAT IN BOOK 70, PAGE 33 OF RECORDS.

# Utah State Parcels

1.3.1 (ChangeLog.html)



**UTAH AGRC**  
Automated Geographic Reference Center

