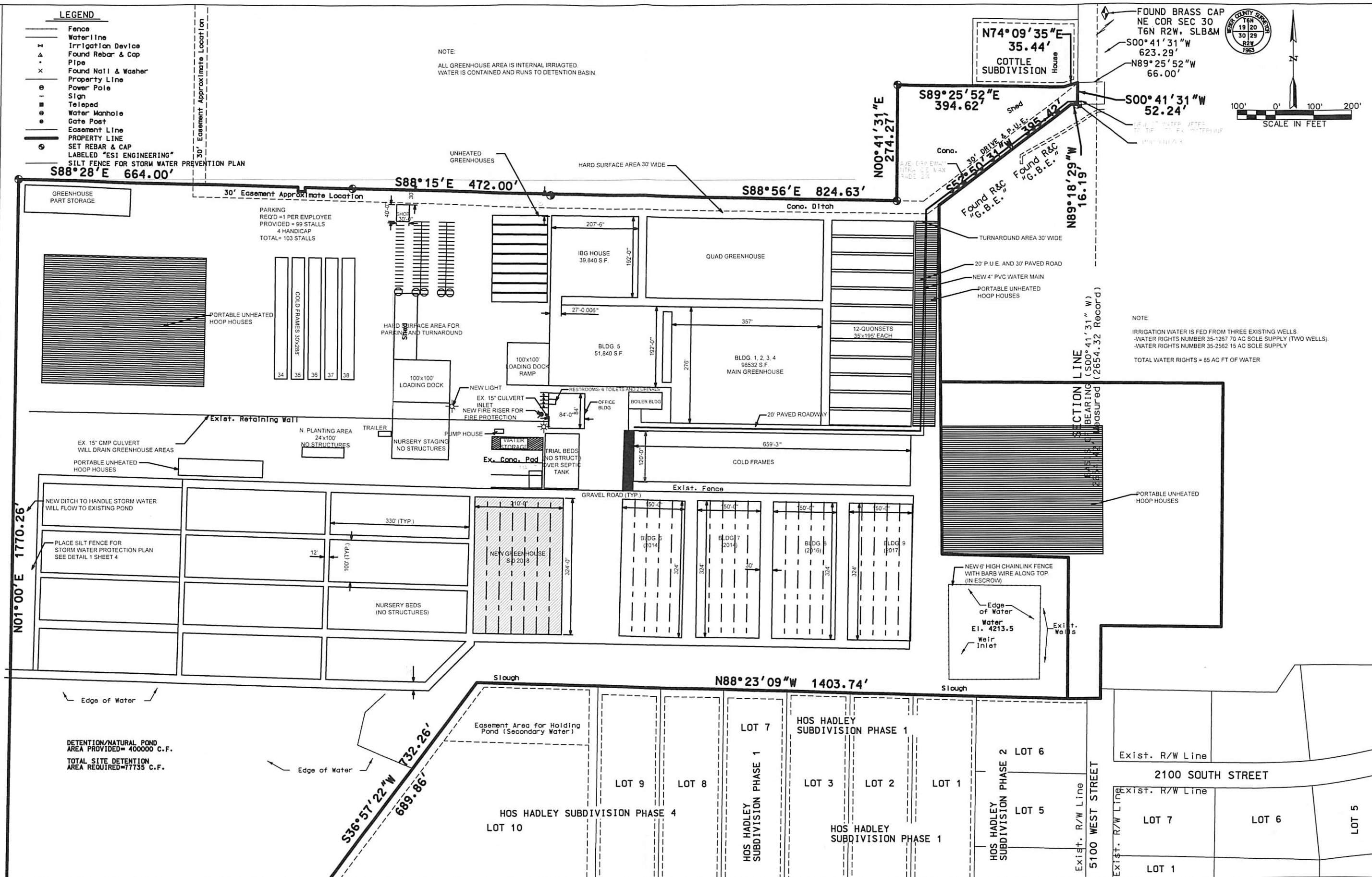
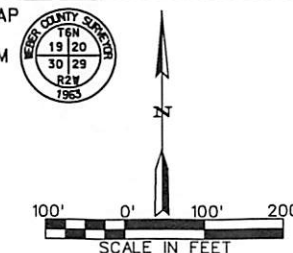


LEGEND

- Fence
- Waterline
- Irrigation Device
- ▲ Found Rebar & Cap
- Pipe
- × Found Nail & Washer
- Property Line
- Power Pole
- Sign
- Telepad
- Water Manhole
- Gate Post
- Easement Line
- PROPERTY LINE
- SET REBAR & CAP
- LABELED "ESI ENGINEERING"
- SILT FENCE FOR STORM WATER PREVENTION PLAN

NOTE:
ALL GREENHOUSE AREA IS INTERNAL IRRIGATED.
WATER IS CONTAINED AND RUNS TO DETENTION BASIN



NOTE:
IRRIGATION WATER IS FED FROM THREE EXISTING WELLS.
-WATER RIGHTS NUMBER 35-1257 70 AC SOLE SUPPLY (TWO WELLS)
-WATER RIGHTS NUMBER 35-2562 15 AC SOLE SUPPLY
TOTAL WATER RIGHTS = 85 AC FT OF WATER

REVISION	DATE	BY	DESCRIPTION	DESIGN
1	09/18	BFC	ADDED GREENHOUSE S-0	BFC
				FTC
				FEB-2005

SITE GRADING AND DRAINAGE PLAN

**PINEAE GREENHOUSES
NEW SITE IN OGDEN, UTAH**



ESI ENGINEERING
CONSULTING ENGINEERS AND LAND SURVEYORS
3500 SOUTH MAIN STREET SUITE 206
SALT LAKE CITY, UTAH 84115
TEL: (801) 263-1752

SHEET 2 OF 5
PROJECT NO. 05-008