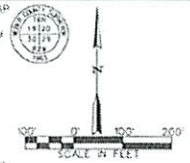
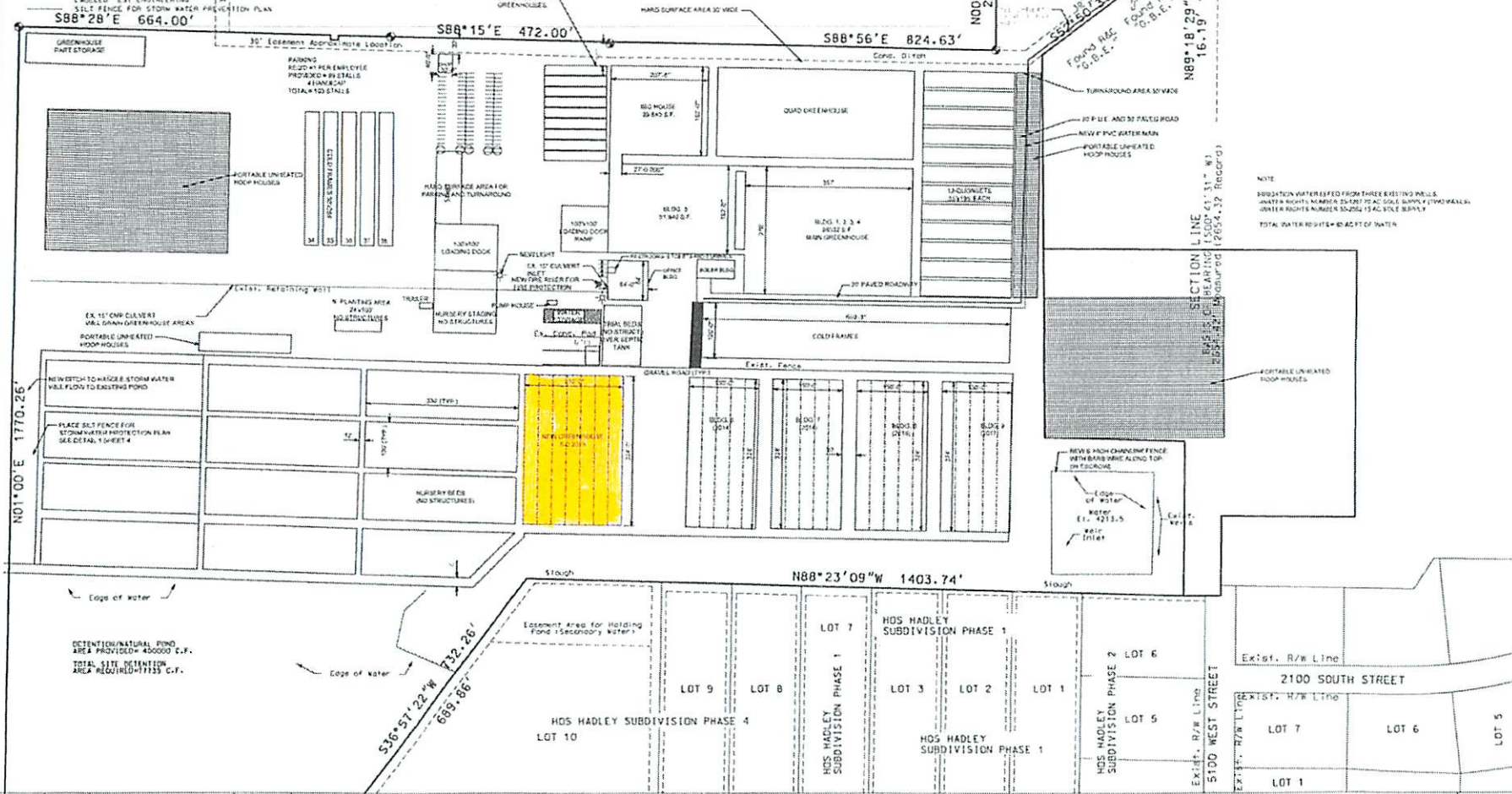


- LEGEND**
- Fence
  - Waterline
  - Irrigation Device
  - Found Rebar A Cap
  - Pipe
  - Found Notch & Washer
  - Property Line
  - Power Pole
  - Sign
  - Telephone
  - Water Mains/POB
  - Gate Post
  - Equipment Line
  - PROPERTY LINE
  - SET REBAR & CAP
  - LABELED "ESI ENGINEERS"

NOTE:  
ALL GREENHOUSE AREAS INTERNAL IRRIGATED.  
WATER IS CONTAINED AND RUNG TO DETENTION BASIN.



N74°09'35"E  
35.44'  
COTTLE  
SUBDIVISION



NOTE:  
IRRIGATION WATERED FROM THREE EXISTING WELLS.  
WATER RIGHTS NUMBER 25-28775 AC SOLE SUPPLY (TWO WELLS)  
WATER RIGHTS NUMBER 33-2552 15 AC SOLE SUPPLY  
TOTAL WATER RIGHTS = 64.2 C.F. OF WATER

DETECTION/NATURAL POND  
AREA PROVIDED = 40000 C.F.  
TOTAL SITE DETENTION  
AREA REQUIRED = 17133 C.F.

REVISION	DATE	BY	DESCRIPTION	DESIGN	BY
1	05/18	DFC	ADDED GREENHOUSE S-O	SHAWN	DFC
				CHECKED	DFC
				DATE	FEB. 2005

**SITE GRADING AND DRAINAGE PLAN**

**PINEAE GREENHOUSES  
NEW SITE IN OGDEN, UTAH**



**ESI ENGINEERING**  
CONSULTING ENGINEERS AND LAND SURVEYORS  
3500 SOUTH MAIN STREET SUITE 206  
SALT LAKE CITY, UTAH 84115  
TEL: (801) 463-1752

SHEET 2  
OF 2  
PROJECT NO.  
05-008