

Existing Road

Connecting with asphalt Driveway

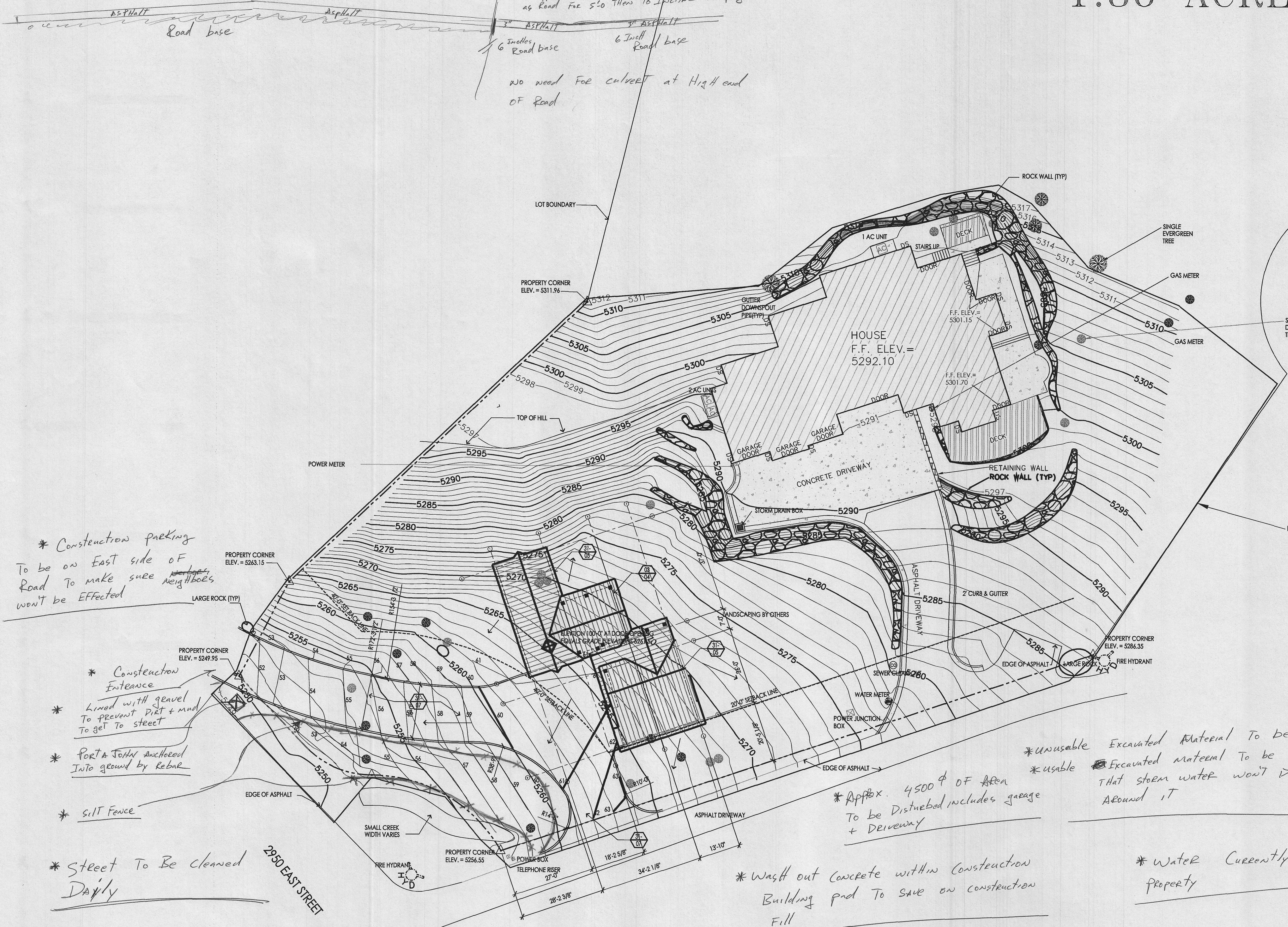
1.86 ACRES



architects
planners
interior designers

6465 South 3000 East
Suite 205
Salt Lake City, UT 84121
Ph: 801.733-2500
Fax: 801.733-2501
www.jsa-llc.com

The design shown and derived herein including all technical drawings, graphic representation & models thereof, are proprietary & can not be copied, duplicated, or commercially exploited in whole or in part without the sole and express written permission from JSA Architects, llc.
These drawings are available for limited review and evaluation by clients, consultants, contractors, government agencies, vendors, and other personnel only in accordance with this notice.



* Construction parking
To be on East side of Road to make sure neighbors won't be affected

* Construction Entrance
Lined with gravel to prevent dirt & mud to get to street
Porta John anchored into ground by rebar

* silt Fence

* Street To Be cleaned Daily

* Land To Sky Const. Inc. 801-497-1746
* Wasatch Valley Excavation Inc. 801-430-2083

* Wash out concrete within construction Building pad to save on construction fill

* Approx. 4500' of Area To be Disturbed includes garage + Driveway

* unusable Excavated Material To be Hauled off
* usable Excavated material To be placed in Area that stem water won't disturb other Areas around it

* water Currently is Absorbed by Property

project:
VICTOR VARELA
NEW GARAGE
AND STORAGE
BUILDING

6102 S. SPRING CANYON ROAD
WEBER COUNTY, UTAH

date: _____ DATE
revisions: _____

data:
project no: XXXX
drawn by: XXXX
checked by: XXXX

title
SITE \ PLAN
sheet

A 100

SITE PLAN
SCALE: 1"=16'-0"

