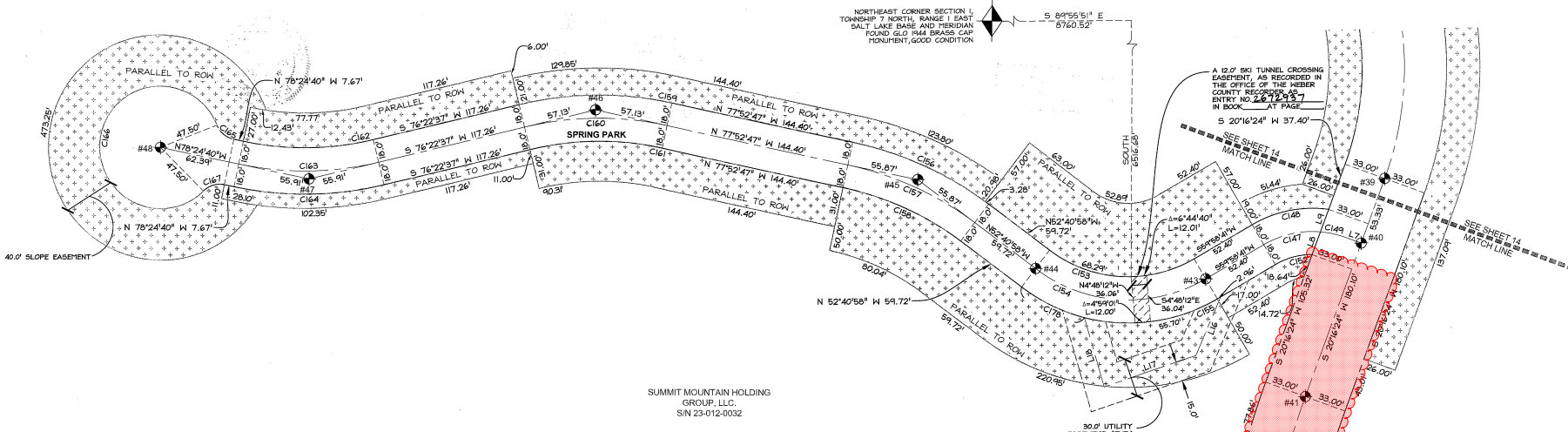


DEDICATION PLAT FOR SUMMIT PASS AND SPRING PARK

LOCATED IN SECTION 1 OF TOWNSHIP 7 NORTH, RANGE 1 EAST AND SECTIONS 6, 5, 4 & 8 OF TOWNSHIP 7 NORTH, RANGE 2 EAST, SALT LAKE BASE AND MERIDIAN, WEBER COUNTY, UTAH JANUARY 2014



SUMMIT MOUNTAIN HOLDING GROUP, LLC. S/N 23-012-0032

SUMMIT MOUNTAIN HOLDING GROUP, LLC. S/N 23-012-0032

LEGEND

- SECTION CORNER CALCULATED
- SECTION CORNER FOUND
- ROAD CENTERLINE MONUMENT
- COUNTY LINE
- SECTION LINE
- QUARTER SECTION LINE
- RIGHT OF WAY
- ROAD CENTER LINE
- OWNERSHIP LINE
- SLOPE EASEMENT, SEE PLAT NOTE #1
- DRAINAGE EASEMENT, SEE PLAT NOTE #3

LINE TABLE

LINE #	LENGTH	DIRECTION
L7	13.48	S 69°43'36" E
L8	18.86	S 20°16'24" W
L9	18.51	S 20°16'24" W
L16	49.33	N 23°07'00" E
L17	75.60	N 71°22'55" E
L18	56.10	S 15°53'00" E

WEBER COUNTY STREET MONUMENT TABLE

#	NORTHING	EASTING
40	3655894.24	1573413.48
41	3655775.37	1573369.57
42	3655546.75	1573326.36
43	3655867.25	1573292.08
44	3655875.71	1573159.35
45	3655945.76	1573067.46
46	3655999.78	1572815.91
47	3655945.56	1572922.19
48	3655869.31	1572476.36

DRAINAGE EASEMENT LINE TABLE

LINE #	LENGTH	DIRECTION
L321	36.48	N 88°42'25" W
L322	20.00	N 01°17'35" E
L323	36.43	S 88°42'25" E

CURVE TABLE

CURVE #	LENGTH	RADIUS	DELTA	CHORD BEARING	CHORD LENGTH
C144	222.83	667.00	19°08'30"	S 10°42'09" W	221.80'
C145	233.86	700.00	19°08'30"	S 10°42'09" E	232.77'
C146	244.88	733.00	19°08'30"	N 10°42'09" E	243.75'
C147	46.09	75.00	35°12'42"	S 77°35'02" W	45.37'
C148	61.97	93.00	38°10'51"	S 79°04'07" W	60.83'
C149	19.74	75.00	15°05'01"	N 77°16'06" W	19.64'
C152	30.12	57.00	30°16'19"	S 75°06'50" W	29.77'
C153	119.88	102.00	67°20'21"	S 86°21'09" E	113.10'
C154	141.04	120.00	67°20'21"	N 86°21'09" W	133.06'
C155	162.19	138.00	67°20'21"	S 86°21'09" E	153.02'
C156	117.86	268.00	25°11'49"	N 65°16'53" W	116.91'
C157	109.94	250.00	25°11'49"	N 65°16'53" W	109.06'
C158	102.03	232.00	25°11'49"	N 65°16'53" W	101.21'
C159	120.41	268.00	25°44'36"	S 89°14'55" W	119.40'
C160	112.33	250.00	25°44'36"	S 89°14'55" W	111.38'
C161	104.24	232.00	25°44'36"	S 89°14'55" W	103.36'
C162	102.09	232.00	25°12'43"	N 88°58'58" E	101.27'
C163	110.01	250.00	25°12'43"	S 88°58'58" W	109.12'
C164	117.93	268.00	25°12'43"	N 88°58'58" E	116.98'
C165	17.80	18.00	56°39'33"	S 50°04'54" E	17.08'
C166	243.17	47.50	293°19'06"	S 11°35'20" W	52.21'
C167	17.80	18.00	56°39'33"	S 73°15'33" W	17.08'
C178	54.75	138.00	22°43'47"	S 64°02'52" E	54.39'

NOTE: ALL SLOPE EASEMENTS ARE PARALLEL TO R.O.W.

DEDICATION PLAT FOR SUMMIT PASS AND SPRING PARK

LOCATED IN SECTION 1 OF TOWNSHIP 7 NORTH, RANGE 1 EAST AND SECTIONS 6, 5, 4 & 8 OF TOWNSHIP 7 NORTH, RANGE 2 EAST, SALT LAKE BASE AND MERIDIAN, WEBER COUNTY, UTAH



Sheet 15 of 15

NV5
NOTICE VERTICALE FIVE

STATE OF UTAH, COUNTY OF WEBER, RECORDED AND FILED AT THE REQUEST OF:
ENTRY NO. **2472934**
DATE: _____ TIME: _____
BOOK: **75** PAGE: **137927**
FEE \$ _____

1317 SOUTH STATE STREET, SUITE 300 HERRING, UT 84037
801.461.1300 TEL. 801.763.0800 FAX WWW.NVCFIVE.COM

WEBER COUNTY RECORDER