

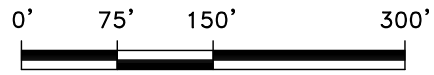
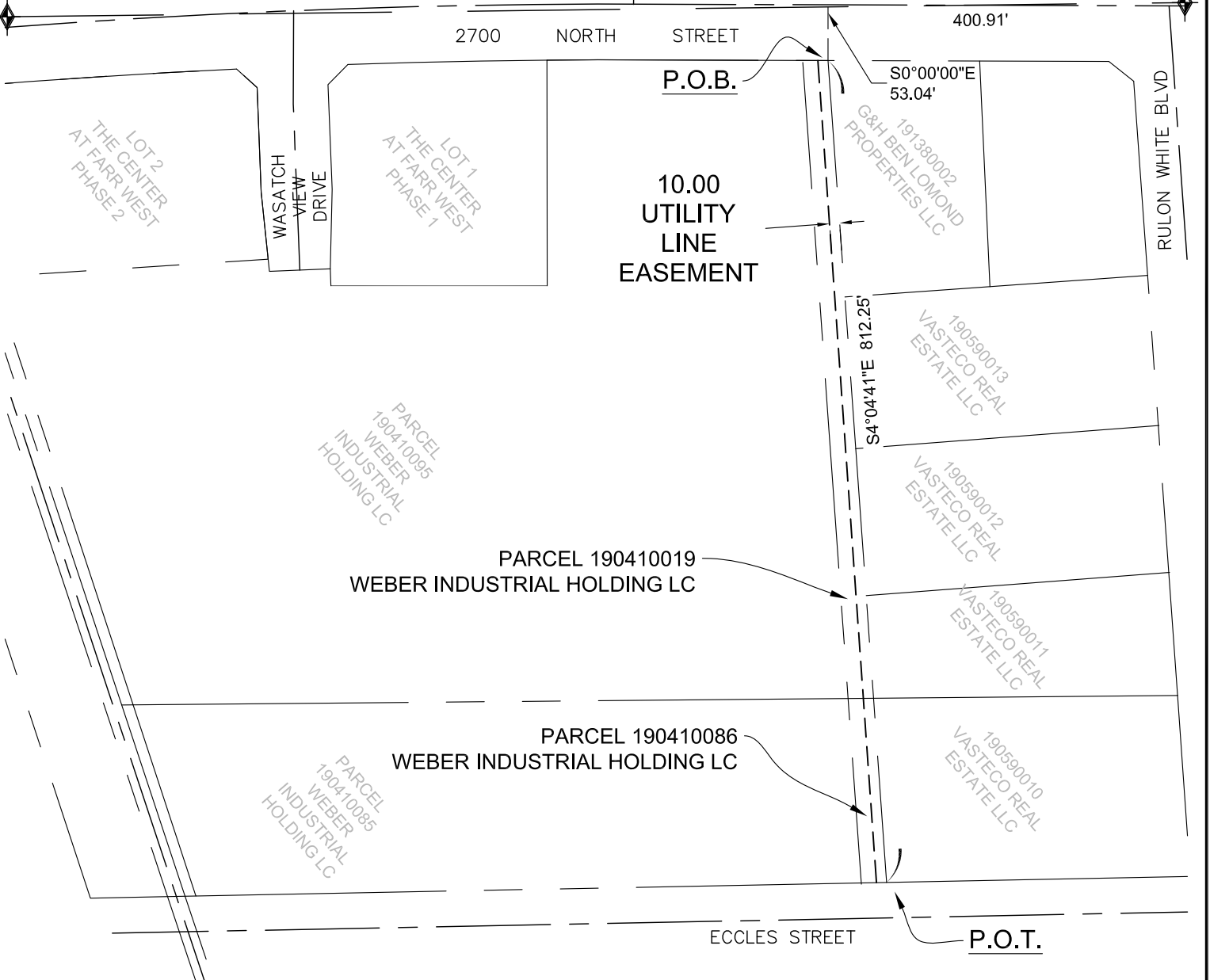
EXHIBIT A

UTILITY LINE EASEMENT

LOCATED IN THE NORTHWEST QUARTER OF SECTION 36, TOWNSHIP 7 NORTH, RANGE 2 WEST OF THE SALT LAKE BASE AND MERIDIAN
FARR WEST CITY, WEBER COUNTY, UTAH

NORTHWEST CORNER SECTION 36,
TOWNSHIP 7 NORTH, RANGE 2 WEST,
S.L.B.&M.

NORTH QUARTER CORNER SECTION 36,
TOWNSHIP 7 NORTH, RANGE 2 WEST,
S.L.B.&M.



Scale in Feet
1" = 150'



LEGEND

- WEBER COUNTY MONUMENT AS NOTED
- ADJACENT PARCEL
- SECTION LINE
- 10' WIDE UTILITY EASEMENT

GARDNER ENGINEERING
CIVIL • LAND PLANNING
MUNICIPAL • LAND SURVEYING
5150 SOUTH 375 EAST OGDEN, UT
OFFICE: 801.476.0202 FAX: 801.476.0066