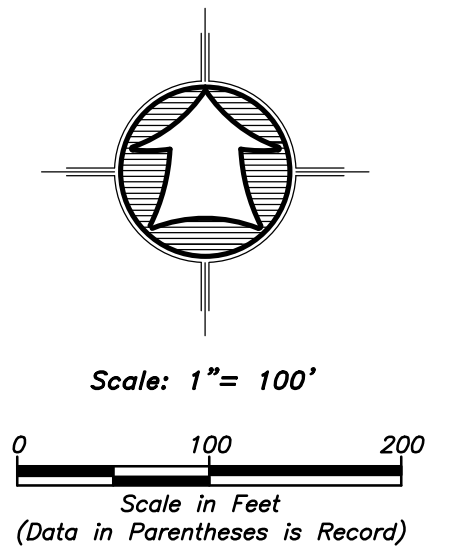
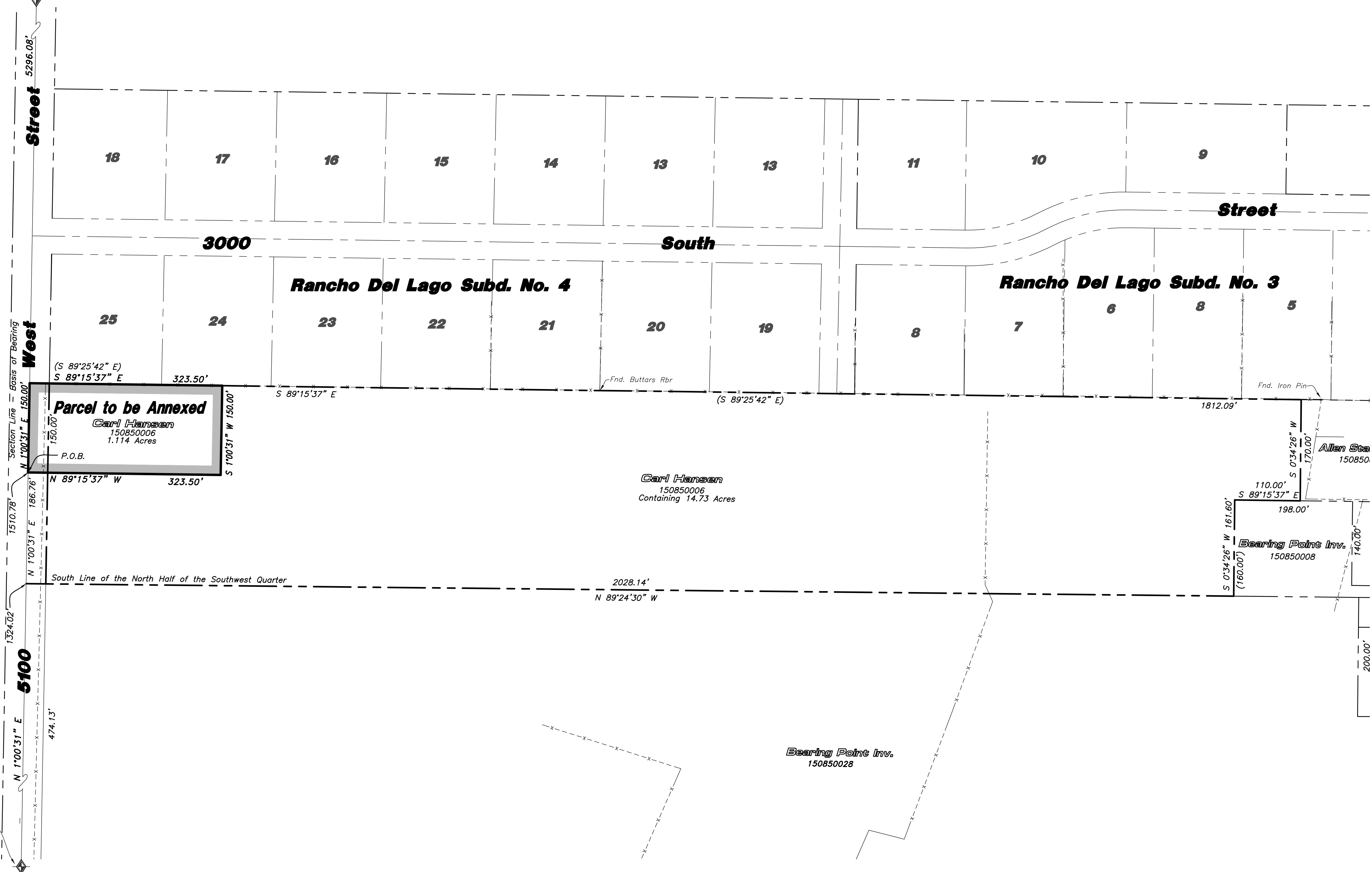


# Plat of Annexation to the Limits of Central Weber Sewer Improvement District Resolution 2019 -

Weber County, Utah  
A Part of the Southwest Quarter of Section 32,  
Township 6 North, Range 2 West, Salt Lake Base & Meridian  
January 2019

Northwest Corner of Section 32,  
T. 6 N., R. 2 W., S.L.B.&M  
Found Weber County 3" Brass  
Cap Monument dated 1980.  
Fair Condition.



Southwest Corner of Section 32,  
T. 6 N., R. 2 W., S.L.B.&M  
Found Weber County 3" Brass  
Cap Monument set in Ring &  
Cover. Dated 2004. Good Cond.

- LEGEND**
- Subject Property Line
  - - - - Adjoining Property Line
  - +—+ Centerline
  - Section Line
  - Proposed Limits of Central Weber Sewer Improvement District
  - ◆ Section Corner

**Narrative**

The purpose of this survey was to plat was to annex the properties into the Central Weber Sewer Improvement District as shown and described hereon. The survey was ordered by Kerry Egbert. The control used to establish the property corners was the existing Weber County Surveyor Monumentation surrounding Section 32, Township 6 North, Range 2 West, S.L.B.&M. The basis of bearing is the west line of said Section which bears North 01°00'31" East, Utah North, State Plane, Calculated N.A.D.83 Bearing.

**WEBER COUNTY SURVEYOR**

I hereby certify that the Weber County Surveyor's Office has reviewed this plat and all conditions for approval by this office have been satisfied. The approval of this plat by the Weber County Surveyor does not relieve the Licensed Land Surveyor who executed this plat from the responsibilities and/or liabilities associated therewith.

Signed this \_\_\_\_\_ day of \_\_\_\_\_, 2019.

**ACCEPTANCE BY LEGISLATIVE BODY**

This is to certify that we, the Central Weber Sewer Improvement District have received a petition signed by a majority of the owners and the owners of at least one third in value of the reap property shown, requesting that said areas be annexed to the Central Weber Sewer Improvement District and that a copy of the ordinance or resolution has been prepared for the filing herewith in accordance with the provisions of Utah Code and that we have examined and do hereby approve and accept the annexation of the areas as shown and described hereon.

Signed this \_\_\_\_\_, Day of \_\_\_\_\_, 2019.

**BOUNDARY DESCRIPTION**

A PART OF THE SOUTHWEST QUARTER OF SECTION 32, TOWNSHIP 6 NORTH, RANGE 2 WEST OF THE SALT LAKE BASE AND MERIDIAN.

BEGINNING AT A POINT ON THE WEST LINE OF SAID SOUTHWEST QUARTER LOCATED 1510.78 FEET NORTH 01°00'31" EAST ALONG SAID WEST LINE FROM THE SOUTHWEST CORNER OF SAID SECTION 32;

RUNNING THENCE ALONG SAID WEST LINE NORTH 01°00'31" EAST 150.00 FEET TO THE SOUTH BOUNDARY LINE OF RANCHO DEL LAGO SUBDIVISION NO. 4; THENCE ALONG SAID SOUTH BOUNDARY LINE SOUTH 89°15'37" EAST (SOUTH 89°25'42" EAST BY RECORD) 323.50 FEET; THENCE SOUTH 01°00'31" WEST 150.00 FEET; THENCE NORTH 89°15'37" WEST 323.50 FEET TO THE POINT OF BEGINNING. CONTAINING 48,526 SQUARE FEET OR 1.114 ACRES.

**SURVEYOR'S CERTIFICATE**

I, K. Greg Hansen, do hereby certify that I am a Registered Professional Land Surveyor in the State of Utah in Accordance with Title 58, Chapter 22, Professional Engineers and Land Surveyors Act. I also certify that this plat of Annexation to the Central Weber Sewer Improvement District Resolution has been correctly drawn to the designated scale and is a true and correct representation of the property as shown and described hereon based on data compiled from records in the Weber County Records Office.

Signed this \_\_\_\_\_ day of \_\_\_\_\_, 2019.

K. Greg Hansen PLS  
Utah Land Surveyor Licence No. 167819



**WEBER COUNTY RECORDER**

ENTRY NO. \_\_\_\_\_ FEE PAID \_\_\_\_\_ FILED FOR RECORD AND RECORDED \_\_\_\_\_ IN BOOK \_\_\_\_\_ OF OFFICIAL RECORDS, PAGE \_\_\_\_\_ RECORDED FOR \_\_\_\_\_ COUNTY RECORDER BY: \_\_\_\_\_ DEPUTY