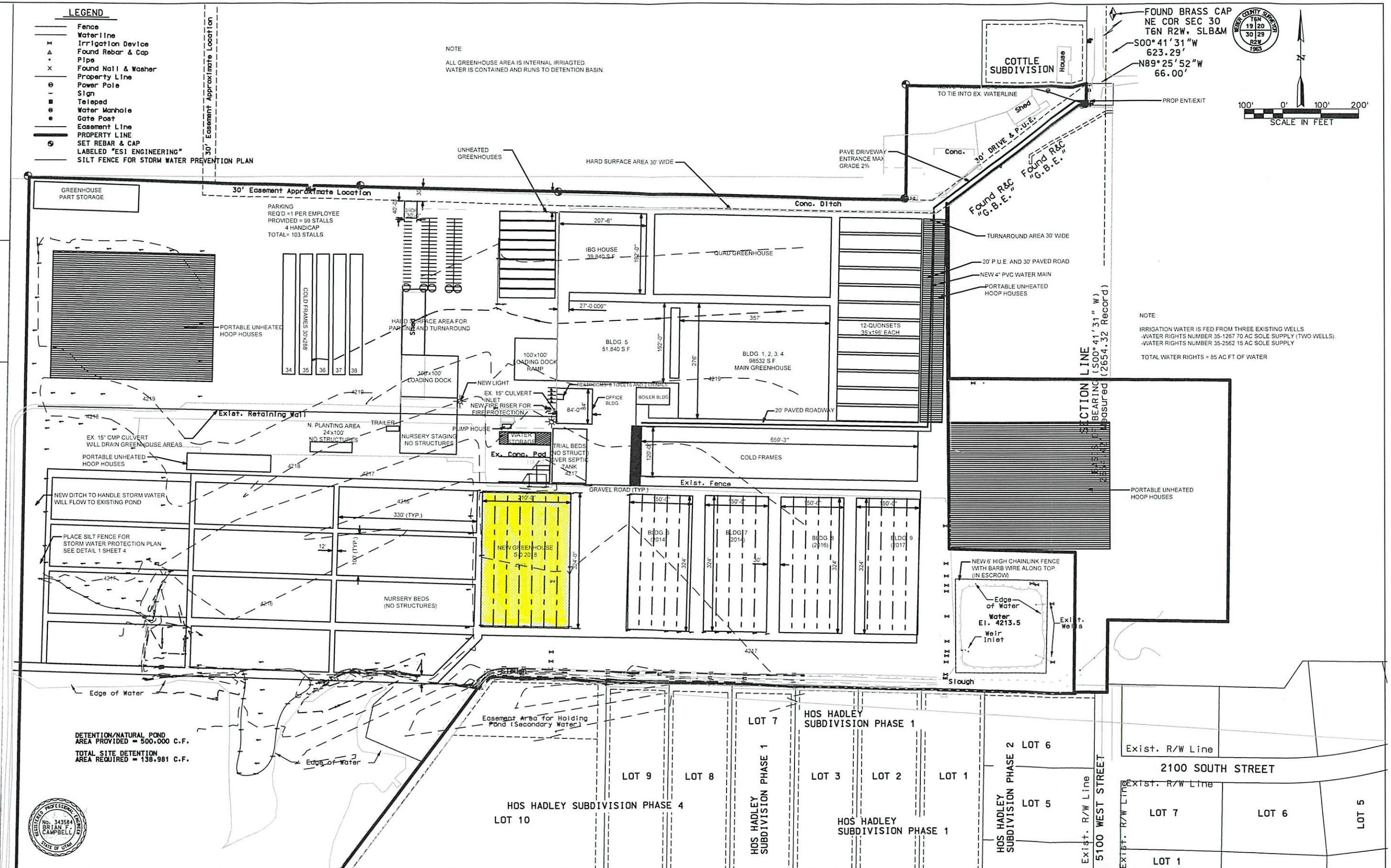
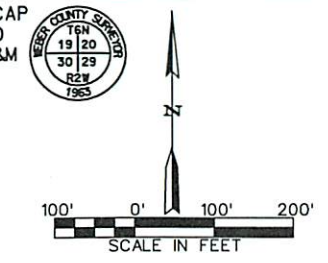


LEGEND

- Fence
- Waterline
- × Irrigation Device
- △ Found Rebar & Cap
- Pipe
- Found Nail & Washer
- Property Line
- Power Pole
- Sign
- Teledap
- Water Manhole
- Gate Post
- Easement Line
- PROPERTY LINE
- SET REBAR & CAP
- LABELED "ESI ENGINEERING"
- SILT FENCE FOR STORM WATER PREVENTION PLAN

NOTE
ALL GREENHOUSE AREA IS INTERNAL IRRIGATED
WATER IS CONTAINED AND RUNS TO DETENTION BASIN.



NOTE
IRRIGATION WATER IS FED FROM THREE EXISTING WELLS
-WATER RIGHTS NUMBER 35-1267 70 AC SOLE SUPPLY (TWO WELLS)
-WATER RIGHTS NUMBER 35-2562 15 AC SOLE SUPPLY
TOTAL WATER RIGHTS = 85 AC FT OF WATER



REVISION	DATE	BY	DESCRIPTION	DESIGN	BFC
1	09/18	BFC	ADDED GREENHOUSE S-0	DRAWN	BFC
2	01/19	BFC	UPDATED STORM DRAIN CALCS. & DET. VOL	CHECKED	FTC
				DATE	FEB. 2005

SITE GRADING AND DRAINAGE PLAN

**PINEAE GREENHOUSES
NEW SITE IN OGDEN, UTAH**



ESI ENGINEERING
CONSULTING ENGINEERS AND LAND SURVEYORS
3500 SOUTH MAIN STREET SUITE 206
SALT LAKE CITY, UTAH 84115
TEL: (801) 263-1752

SHEET 2 OF 5
PROJECT NO. 05-008