

DESCRIPTION:

Sediment barrier erected around storm drain inlet.

APPLICATION:

Construct at storm drainage inlets located down-gradient of areas to be disturbed by construction.

INSTALLATION/APPLICATION CRITERIA:

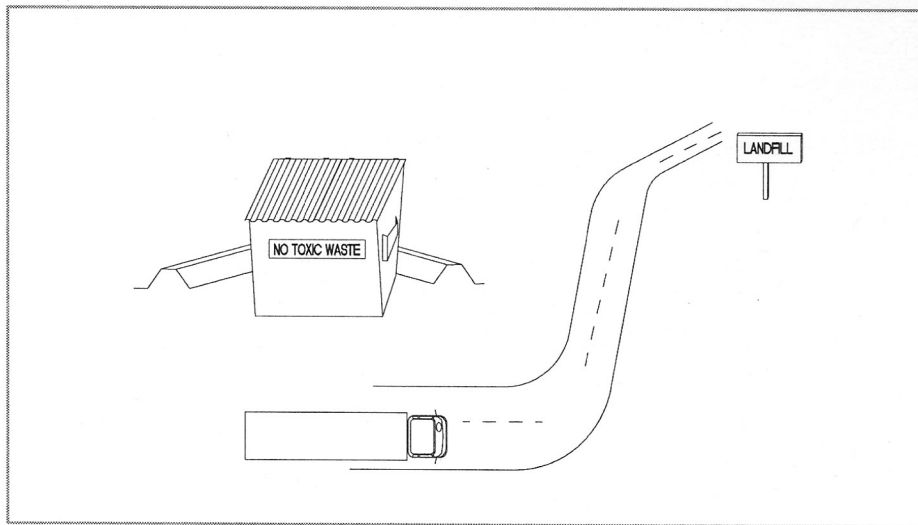
- ◆ Provide up-gradient sediment controls, such as silt fence during construction of inlet
- ◆ When construction of curb and gutter and roadways is complete, install gravel filled wattles around perimeter of inlet

LIMITATIONS:

- ◆ Recommended maximum contributing drainage area of one acre
- ◆ Requires shallow slopes adjacent to inlet

MAINTENANCE:

- ◆ Inspect inlet protection following storm event and at a minimum of once every 14 days.
- ◆ Remove accumulated sediment when it reaches 4 inches in depth.
- ◆ Look for bypassing or undercutting and repair or realign as needed.

**DESCRIPTION:**

Controlled storage and disposal of solid waste generated by construction activities.

**APPLICATION:**

All construction sites.

**INSTALLATION:**

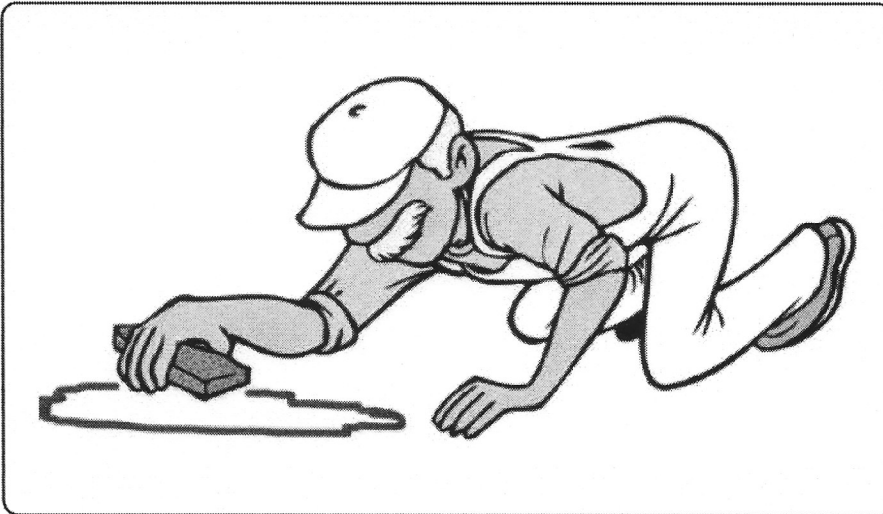
- ◆ Designate one or several waste collection areas with easy access for construction vehicles and personnel. Ensure no waterways or storm drainage inlets are located near the waste collection areas.
- ◆ Construct compacted earthen berm (See Earth Berm Barrier Information Sheet), or similar perimeter containment around collection area for impoundment in the case of spills and to trap any windblown trash.
- ◆ Use watertight containers with covers to remain closed when not in use. Provide separate containers for different waste types where appropriate and label clearly.
- ◆ Ensure all on site personnel are aware of and utilize designated waste collection area properly and for intended use only (e.g. all toxic, hazardous, or recyclable materials shall be properly disposed of separately from general construction waste).
- ◆ Arrange for periodic pickup, transfer and disposal of collected waste at an authorized disposal location. Include regular Porta-potty service in waste management activities.

**LIMITATIONS:**

- ◆ On-site personnel are responsible for correct disposal of waste.

**MAINTENANCE:**

- ◆ Discuss waste management procedures at progress meetings.
- ◆ Collect site trash daily and deposit in covered containers at designated collection areas.
- ◆ Check containers for leakage or inadequate covers and replace as needed.
- ◆ Randomly check disposed materials for any unauthorized waste (e.g. toxic materials).
- ◆ During daily site inspections check that waste is not being incorrectly disposed of on-site (e.g. burial, burning, surface discharge, discharge to storm drain).



**DESCRIPTION:**

Practices to clean-up leakage/spillage of on-site materials that may be harmful to receiving waters.

**APPLICATION:**

- ▶ All sites

**GENERAL:**

- ▶ Store controlled materials within a storage area.
- ▶ Educate personnel on prevention and clean-up techniques.
- ▶ Designate an Emergency Coordinator responsible for employing preventative practices and for providing spill response.
- ▶ Maintain a supply of clean-up equipment on-site and post a list of local response agencies with phone numbers.

**METHODS:**

- ▶ Clean-up spills/leaks immediately and remediate cause.
- ▶ Use as little water as possible. **NEVER HOSE DOWN OR BURY SPILL CONTAMINATED MATERIAL.**
- ▶ Use rags or absorbent material for clean-up. Excavate contaminated soils. Dispose of clean-up material and soil as hazardous waste.
- ▶ Document all spills with date, location, substance, volume, actions taken and other pertinent data.
- ▶ Contact local Fire Department and State Division of Environmental Response and Remediation (Phone #536-4100) for any spill of reportable quantity.

**OBJECTIVES**

- Housekeeping Practices
- Contain Waste
- Minimize Disturbed Areas
- Stabilize Disturbed Areas
- Protect Slopes/Channels
- Control Site Perimeter
- Control Internal Erosion



**WEBER COUNTY**

**ENGINEERING DEPARTMENT**

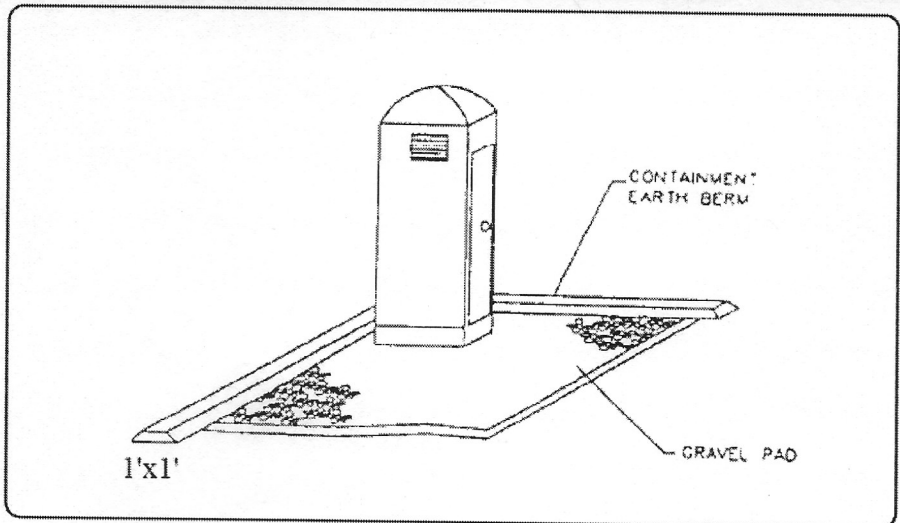
2380 Washington Blvd., Suite 240  
Ogden, UT 84401  
(801) 399-8374

**TARGETED POLLUTANTS**

- Sediment
- Nutrients
- Toxic Materials
- Oil & Grease
- Floatable Materials
- Other Construction Waste
  
- High Impact
- Medium Impact
- Low or Unknown Impact

**IMPLEMENTATION REQUIREMENTS**

- Capital Costs
- O&M Costs
- Maintenance
- Training
  
- High
- Medium
- Low



**DESCRIPTION:**

Temporary on-site sanitary facilities for construction personnel.

**APPLICATION:**

- ▶ All sites with no permanent sanitary facilities or where permanent facility is too far from activities.

**INSTALLATION/APPLICATION CRITERIA:**

- ▶ Locate portable toilets in convenient locations throughout the site.
- ▶ Prepare level, gravel surface and provide clear access to the toilets for servicing and for on-site personnel.
- ▶ Construct earth berm perimeter (See Earth Berm Barrier Information Sheet), control for spill/protection leak.

**LIMITATIONS:**

No limitations.

**MAINTENANCE:**

- ▶ Portable toilets should be maintained in good working order by licensed service with daily observation for leak detection.
- ▶ Regular waste collection should be arranged with licensed service.
- ▶ All waste should be deposited in sanitary sewer system for treatment with appropriate agency approval.

**OBJECTIVES**

- Housekeeping Practices
- Contain Waste
- Minimize Disturbed Areas
- Stabilize Disturbed Areas
- Protect Slopes/Channels
- Control Site Perimeter
- Control Internal Erosion



**WEBER COUNTY**

**ENGINEERING DEPARTMENT**

2380 Washington Blvd., Suite 240  
Ogden, UT 84401  
(801) 399-8374

**TARGETED POLLUTANTS**

- Sediment
  - Nutrients
  - Toxic Materials
  - Oil & Grease
  - Floatable Materials
  - Other Construction Waste
- 
- High Impact
  - Medium Impact
  - Low or Unknown Impact

**IMPLEMENTATION REQUIREMENTS**

- Capital Costs
  - O&M Costs
  - Maintenance
  - Training
- 
- High
  - Medium
  - Low