

**Eden Center**  
Eden, Weber County, Utah

Lat: 41.3061 Long: -111.8281

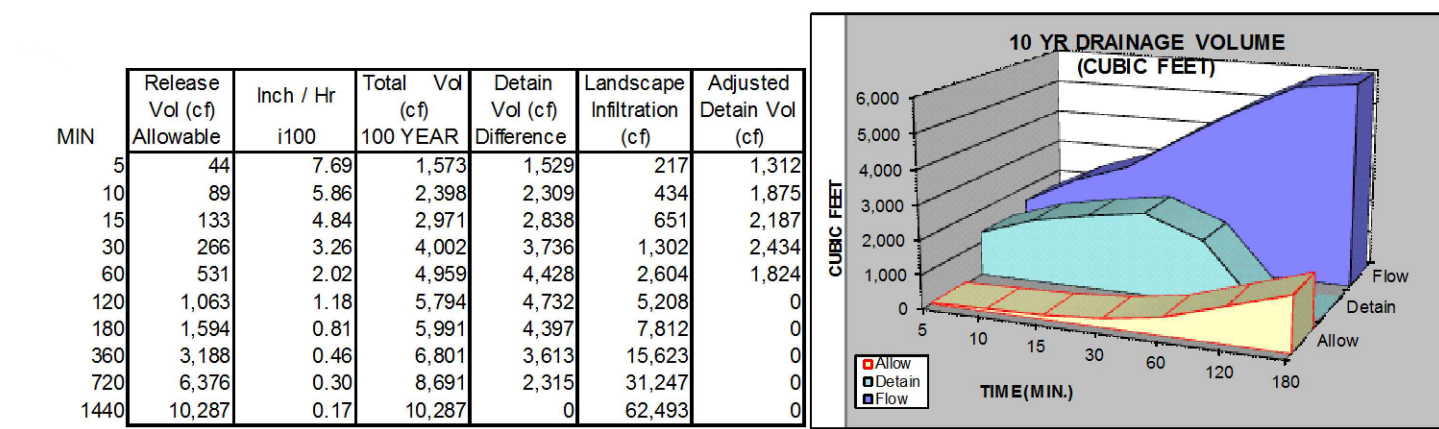
Areas	Sq. Ft.	Area	Acres	C	Infiltration Rate (MPI)	Allow Release Rate (cfs/acre)	Q Allowable (cfs)
Hard Surface	25,122	0.5767	0.85		40.00	0.1	
Building	6,968	0.1600	0.90				
Landscape	20,831	0.4782	0.10				
<b>Total/Weighted</b>	<b>52,921</b>	<b>1.2149</b>	<b>0.56</b>				



GRADING & DRAINAGE PLAN

EDEN CENTER

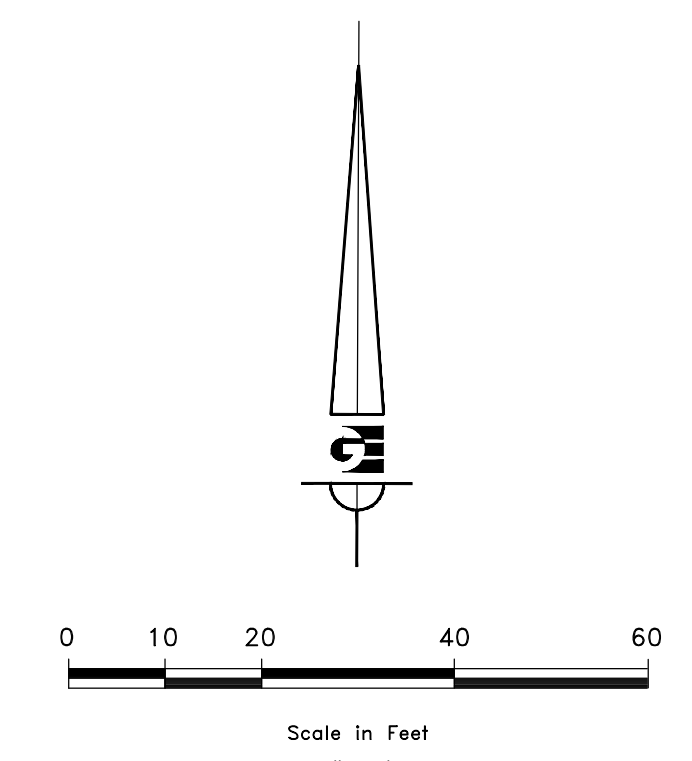
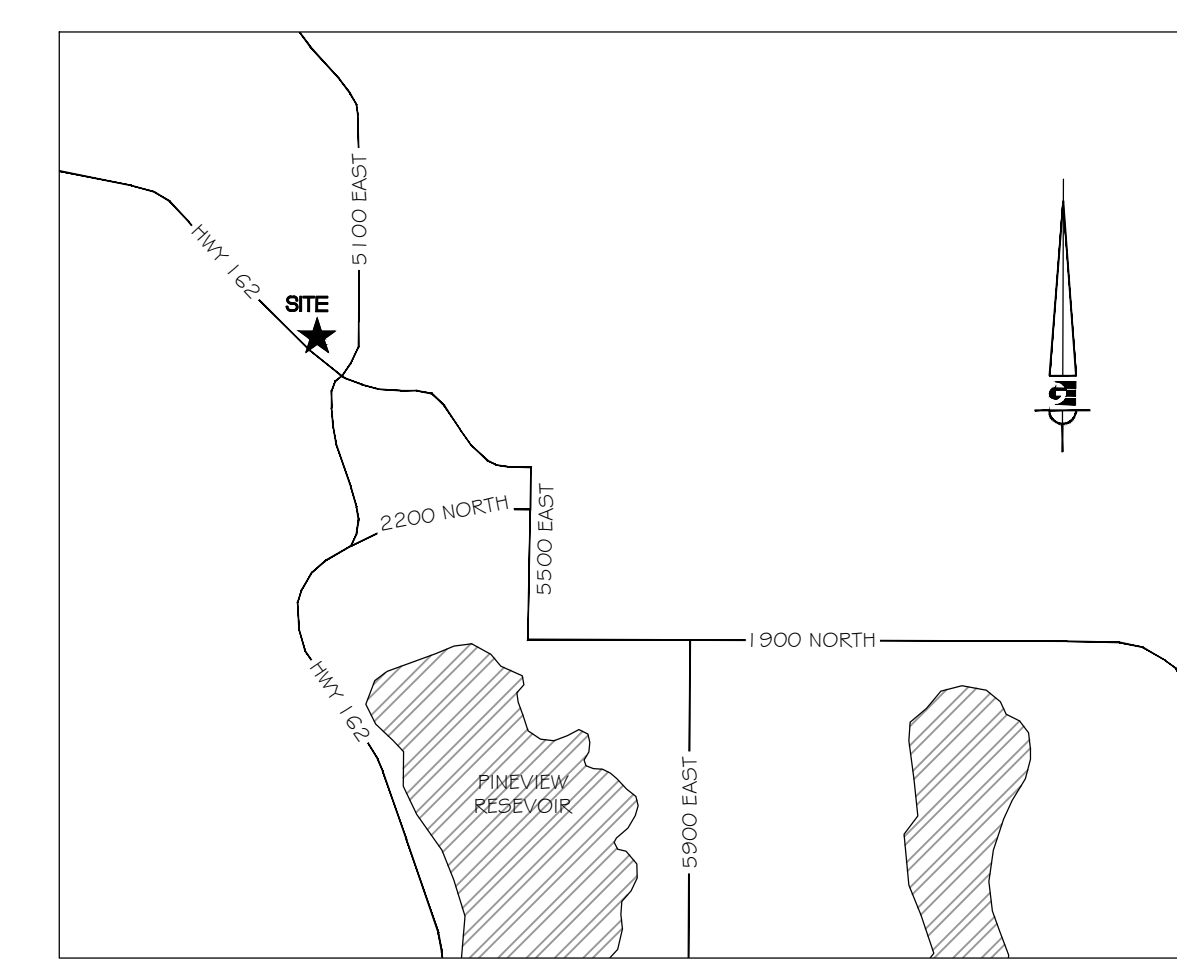
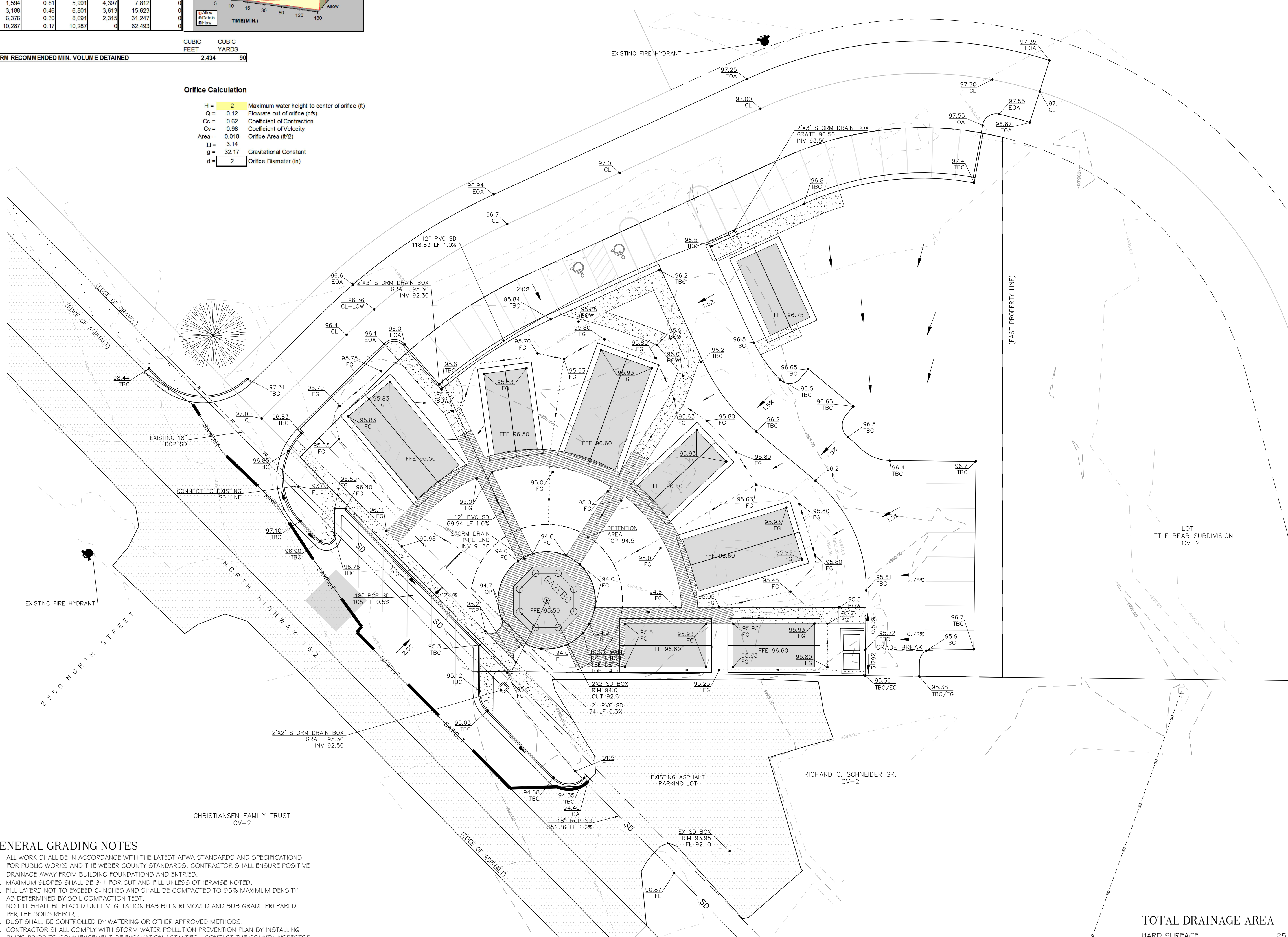
PART OF THE NORTHWEST QUARTER OF SECTION 34 T7N, R1E, SLB & M, U.S. SURVEY  
EDEN CITY, WEBER COUNTY, UTAH  
JUNE 2012



10 YEAR STORM RECOMMENDED MIN. VOLUME DETAINED: 2,434 CUBIC FEET (90 CUBIC YARDS)

Orifice Calculation

H = 2 Maximum water height to center of orifice (ft)  
 Q = 0.12 Flowrate out of orifice (cfs)  
 Cc = 0.62 Coefficient of Contraction  
 Cv = 0.98 Coefficient of Velocity  
 Area = 0.018 Orifice Area (ft<sup>2</sup>)  
 Tt = 3.14  
 g = 32.17 Gravitational Constant  
 d = 2 Orifice Diameter (in)



LEGEND

---	EASEMENT LINE
---	PROPERTY LINE
SD	PROPOSED STORM DRAIN
SD	EXISTING STORM DRAIN
---	DRAINAGE DIRECTION
---	DRAINAGE SWALE
---	STORAGE SWALE
TBC	TOP BACK OF CURB
EG	EXISTING GROUND
FG	FINISH GROUND
BOW	BACK OF WALK
EOA	EDGE OF ASPHALT
FL	FLOW LINE
CL	CENTERLINE

- GENERAL GRADING NOTES**
- ALL WORK SHALL BE IN ACCORDANCE WITH THE LATEST APWA STANDARDS AND SPECIFICATIONS FOR PUBLIC WORKS AND THE WEBER COUNTY STANDARDS. CONTRACTOR SHALL ENSURE POSITIVE DRAINAGE AWAY FROM BUILDING FOUNDATIONS AND ENTRIES.
  - MAXIMUM SLOPES SHALL BE 3:1 FOR CUT AND FILL UNLESS OTHERWISE NOTED.
  - FILL LAYERS NOT TO EXCEED 6-INCHES AND SHALL BE COMPACTED TO 95% MAXIMUM DENSITY AS DETERMINED BY SOIL COMPACTION TEST.
  - NO FILL SHALL BE PLACED UNTIL VEGETATION HAS BEEN REMOVED AND SUB-GRADE PREPARED PER THE SOILS REPORT.
  - DUST SHALL BE CONTROLLED BY WATERING OR OTHER APPROVED METHODS.
  - CONTRACTOR SHALL COMPLY WITH STORM WATER POLLUTION PREVENTION PLAN BY INSTALLING BMP'S PRIOR TO COMMENCEMENT OF EXCAVATION ACTIVITIES. CONTACT THE COUNTY INSPECTOR FOR INSPECTION.
  - ALL RECOMMENDATIONS OF THE GEOTECHNICAL REPORT AND ALL SUBSEQUENT REPORTS, ADDENDUM ETC. SHALL BE CONSIDERED A PART OF THIS GRADING PLAN AND SHALL BE COMPLIED WITH.
  - THE CONTRACTOR SHALL CONTACT BLUE STAKES FOR LOCATION MARKING PRIOR TO COMMENCING EXCAVATION ACTIVITIES.
  - WEBER COUNTY MAY REQUIRE A PRE-CONSTRUCTION MEETING BEFORE A PERMIT IS ISSUED.
  - STREETS ADJACENT TO THE PROJECT SHALL BE CLEAN AT ALL TIMES.
  - CONTRACTOR IS RESPONSIBLE FOR ARRANGING FOR ALL REQUIRED INSPECTIONS.
  - PRIOR TO TAKING WATER FROM A FIRE HYDRANT, THE CONTRACTOR SHALL MAKE ARRANGEMENTS WITH WATER UTILITY TO OBTAIN A WATER METER.
  - ELEVATIONS SHOWN ON BUILDINGS ARE FINISHED FLOOR LOWEST LEVEL.
  - SAWCUT 12" OFF OF EXISTING ASPHALT PRIOR TO NEW INSTALLING NEW PAVEMENT.

**TOTAL DRAINAGE AREA**

HARD SURFACE	25,122 SF
BUILDING	6,968 SF
LANDSCAPE	20,831 SF
<b>RELEASE RATE</b>	<b>0.10 CFS/ACRE</b>
<b>INFILTRATION RATE</b>	<b>1.51 CFS/ACRE</b>
<b>REQUIRED DETENTION</b>	<b>2,434 CF</b>
<b>CAPACITY</b>	<b>3,729 CF</b>

NOTICE: EXISTING UTILITIES ARE SHOWN ON PLANS FOR THE CONVENIENCE OF THE CONTRACTOR ONLY. THE CONTRACTOR IS RESPONSIBLE FOR THE PROTECTION OF ALL UTILITIES. THE ENGINEER BEARS NO RESPONSIBILITY FOR THE UTILITIES NOT SHOWN OR SHOWN INCORRECTLY.

Call BLUE STAKES BEFORE YOU Dig

1-800-662-4111

**DEVELOPER**

WOP WOM, LLC.  
ERIC SMITH  
212 MERCHANT ST. #330  
HONOLULU, HI 96813  
PHONE: (808) 524-3551  
FAX: (808) 524-8803

SCALE: 1" = 20'

DATE: AUGUST 2012  
DESIGN: TMN/RC/JSCC  
DRAWN: RC  
CHECKED: TMN

REVISIONS	DESCRIPTION

DATE: \_\_\_\_\_

DWG: SEE PLOT STAMP AT LEFT

WOP WOM LLC  
EDEN CENTER  
GRADING PLAN  
EDEN CITY, WEBER COUNTY, UTAH

**Gardner Engineering**  
5875 South Adams Ave. Parkway, Suite 200 • Ogden, UT 84405  
• Phone (801) 476 0202 • Fax (801) 476-0066

NOTE: ALL CONSTRUCTION TO CONFORM TO WEBER COUNTY STANDARDS AND SPECIFICATIONS.