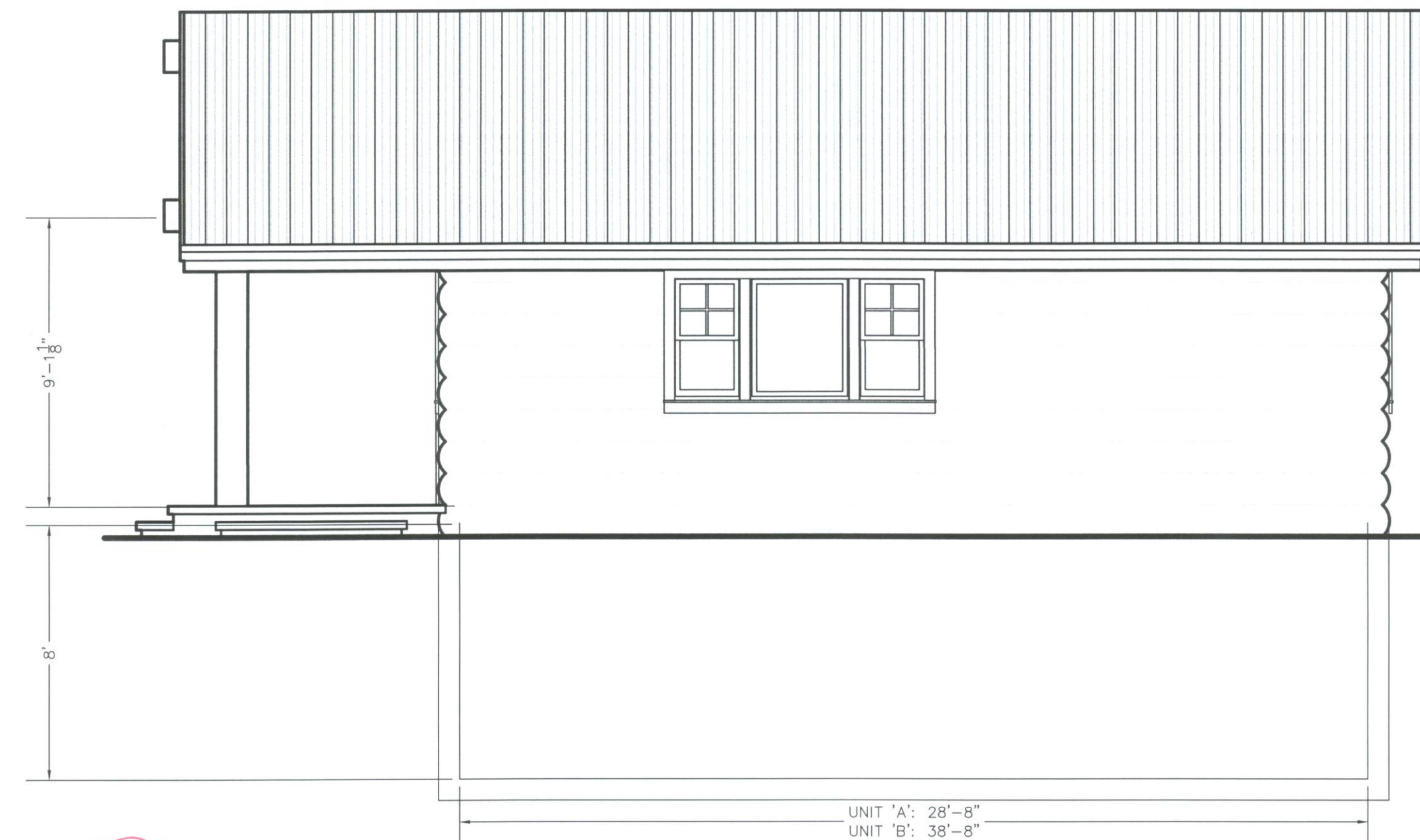


LITTLE BEAR SUBDIVISION LOT 3, 1ST AMENDMENT

A PART OF THE NORTHWEST 1/4 OF SECTION 34,
TOWNSHIP 7 NORTH, RANGE 1 EAST, SLB&M, U.S. SURVEY
WEBER COUNTY, UTAH
JUNE 2012



① ② Front Entry Elevation (Log Veneer)
UNIT 'A': 14'-8"
UNIT 'B': 18'-8"

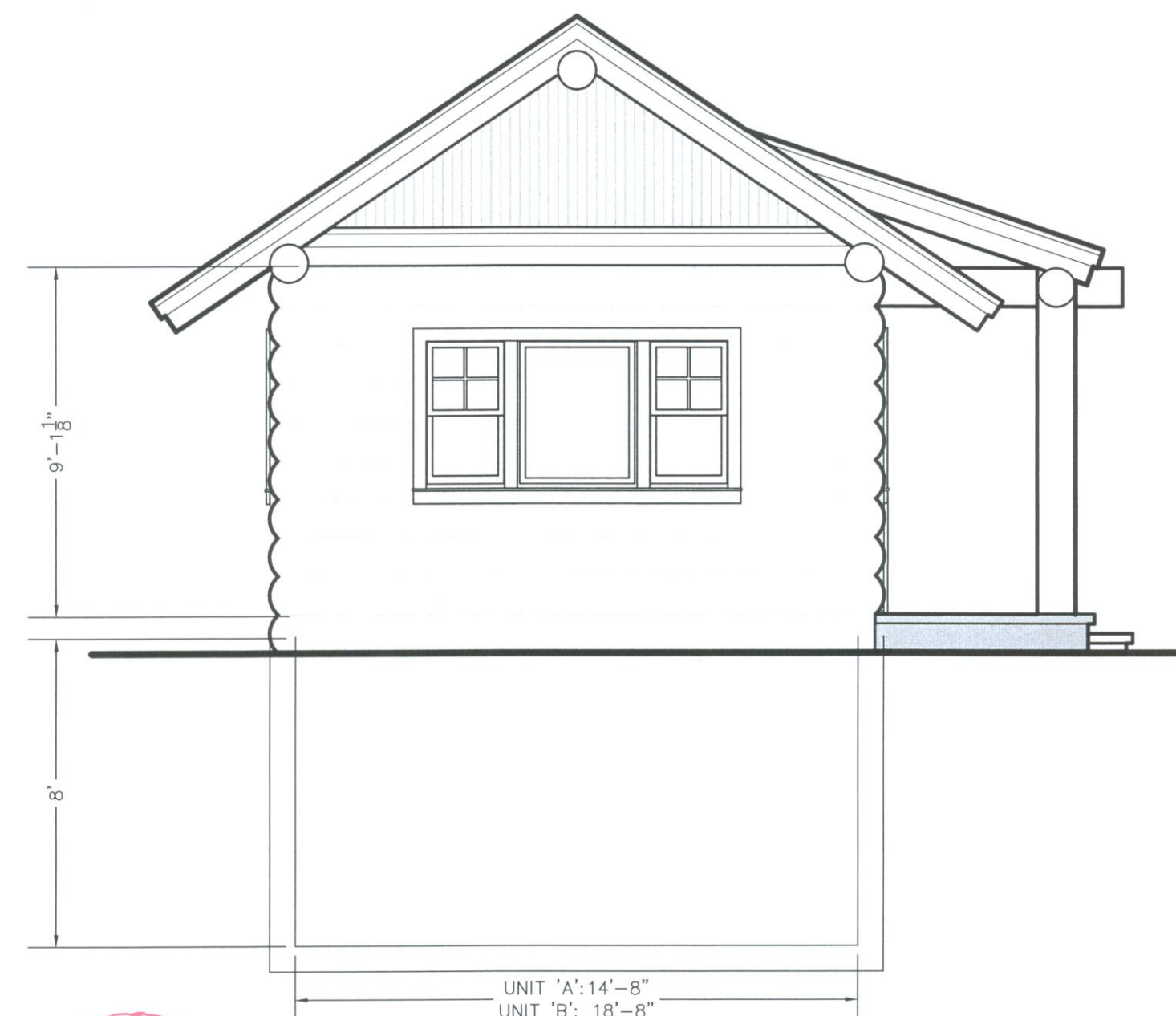


① ② Front Entry - Side Elevation (Log Veneer)
UNIT 'A': 28'-8"
UNIT 'B': 38'-8"

BOTH SHEETS ARE ONLY REFERENCING UNIT TYPE "A" - I KNOW EACH IS GIVING DIMENSION FOR "B" ALSO



① ② Side Entry Elevation (Log Veneer)
UNIT 'A': 28'-8"
UNIT 'B': 38'-8"



① ② Side Entry - Front Elevation (Log Veneer)
UNIT 'A': 14'-8"
UNIT 'B': 18'-8"

0 N/A N/A
Scale in Feet (NTS)

Prepared By:



5875 South Adams Ave. Parkway, Suite 200 • Ogden, UT 84405
Phone (801) 476-0202 • Fax (801) 476-0066

www.gardnerengineering.net

COUNTY RECORDER

ENTRY NO. 2012-0001 FILED FOR RECORD AND
RECORDED EXP. FLD AT
IN BOOK OF OFFICIAL
RECORDS, PAGE , RECORDED
FOR

COUNTY RECORDER
BY: _____ DEPUTY