

N.W. 1/4
SECTION 22, T.7N., R.2W., S.L.B. & M.

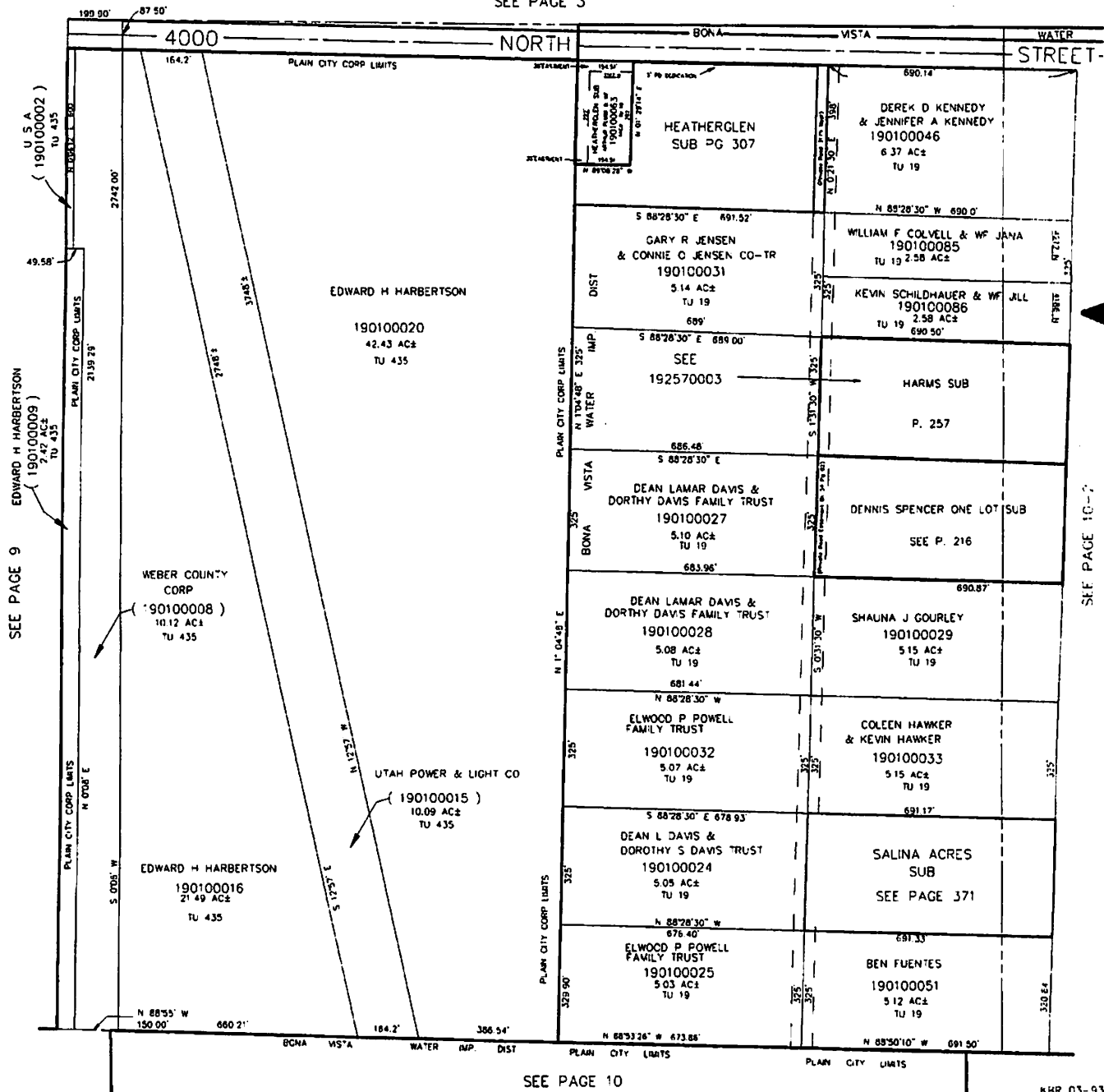
10-1

TAXING UNIT: 19, 435

IN WEBER COUNTY, PLAIN CITY

SCALE 1" = 200'

SEE PAGE 3



SEE PAGE 9

SEE PAGE 10-2

NOTICE: This is neither a plat nor a survey. It is furnished merely as a convenience to aid you in locating the land indicated hereon with reference to streets and other land. No liability is assumed by reason of any reliance hereon.