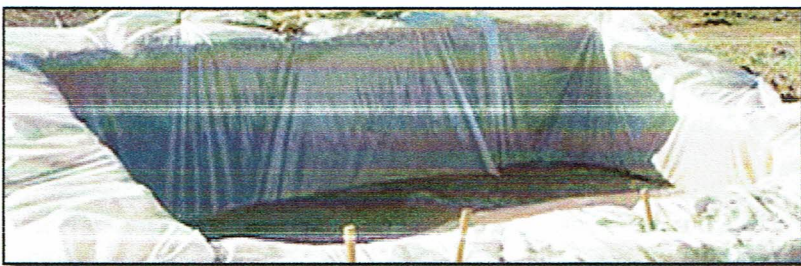


Best Management Practices for Construction Sites

Top Ten BMPs: 9. Waste Management

- Choose smaller, covered containers and more frequent collection.
- Do not allow waste to accumulate on-site.
- Separate recyclable materials from waste and keep covered.
- Conduct visual inspections of dumpsters and recycling bins, removing contaminants and keeping containers covered.
- Stockpile processed materials on-site separately. Place, grade, and shape stockpiles to drain surface water. Cover to prevent windblown dust.

1. [Preservation of Existing Vegetation \(preservation-of-existing-vegetation.htm\)](#)
2. [Construction Phasing \(phasing.htm\)](#)
3. [Construction Entrances \(entrances.htm\)](#)
4. [Silt Fencing \(silt-fencing.htm\)](#)
5. [Storm Drain Inlet Protection \(storm-drain-inlet-protection.htm\)](#)
6. [Vegetative Buffers \(vegetative-buffers.htm\)](#)
7. [Site Stabilization \(site-stabilization.htm\)](#)
8. [Equipment Fueling and Containment \(equipment-fueling-containment.htm\)](#)
9. [Waste Management \(waste-management.htm\)](#)
10. [Fugitive Dust Suppression \(fugitive-dust-suppression.htm\)](#)



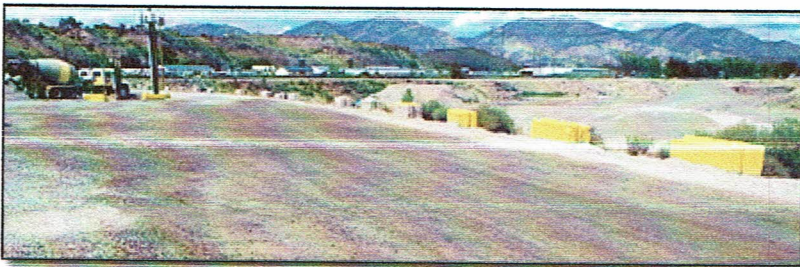
Contact [Paul Harding \(mailto:pharding@utah.gov\)](mailto:pharding@utah.gov) (801) 536-4108 for further information on the content of this page.

Best Management Practices for Construction Sites

Top Ten BMPs: 10. Fugitive Dust Suppression

- Apply water on haul roads.
- Haul materials in properly tarped or sealed containers.
- Restrict vehicle speeds to 10 mph.
- Cover excavated areas and material after excavation activity ceases.
- Reduce the excavation size and/or number of excavations.
- Water-down equipment and excavation faces.

1. [Preservation of Existing Vegetation \(preservation-of-existing-vegetation.htm\)](#)
2. [Construction Phasing \(phasing.htm\)](#)
3. [Construction Entrances \(entrances.htm\)](#)
4. [Silt Fencing \(silt-fencing.htm\)](#)
5. [Storm Drain Inlet Protection \(storm-drain-inlet-protection.htm\)](#)
6. [Vegetative Buffers \(vegetative-buffers.htm\)](#)
7. [Site Stabilization \(site-stabilization.htm\)](#)
8. [Equipment Fueling and Containment \(equipment-fueling-containment.htm\)](#)
9. [Waste Management \(waste-management.htm\)](#)
10. [Fugitive Dust Suppression \(fugitive-dust-suppression.htm\)](#)



Contact [Paul Harding \(mailto:pharding@utah.gov\)](mailto:pharding@utah.gov) (801) 536-4108 for further information on the content of this page.

2.1 SWPPP Sign

Operations or Site Condition: NA

Instruction: See site plan for location

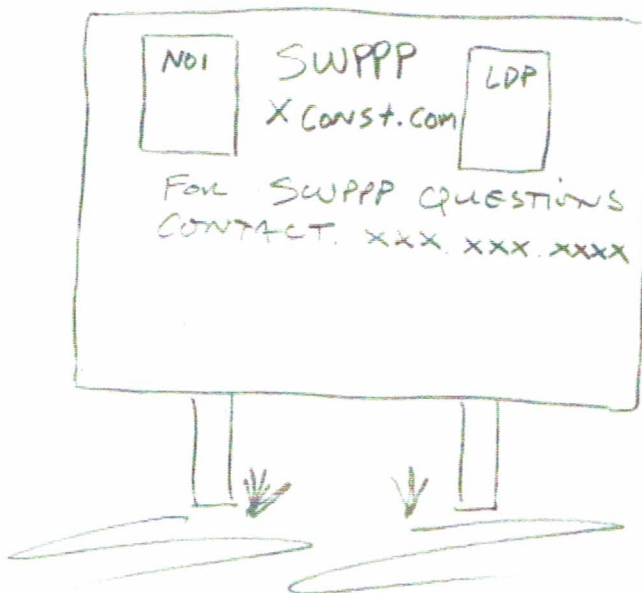
Installation Schedule: Prior to any land disturbance

Maintenance Requirements: Repair when damaged

Maintenance Personnel: Project Manager

Applicable Trades: NA

Detail:



2.3.1 LOT Cut Down

Operation or Site Conditions: Most of the existing vegetation will either trampled or cleared by the building operations. Storm events can occur at anytime necessitating the need for maintained sediment control at the boundary. The LOT is 0.25acre and only 2% at its steepest point therefore this cut should be plenty adequate to retain any runoff during the expected summer cloud burst. The 1' foot cut down will still provide plenty of volume even with some spoil is placed in the cut down area, however most of the excavation spoil will be placed behind the foundation or hauled off as the foot is excavated.

Instruction: Excavator X. Remove 1' from the front 20'. Maintain the minimum dimensions as per detail and site plan.

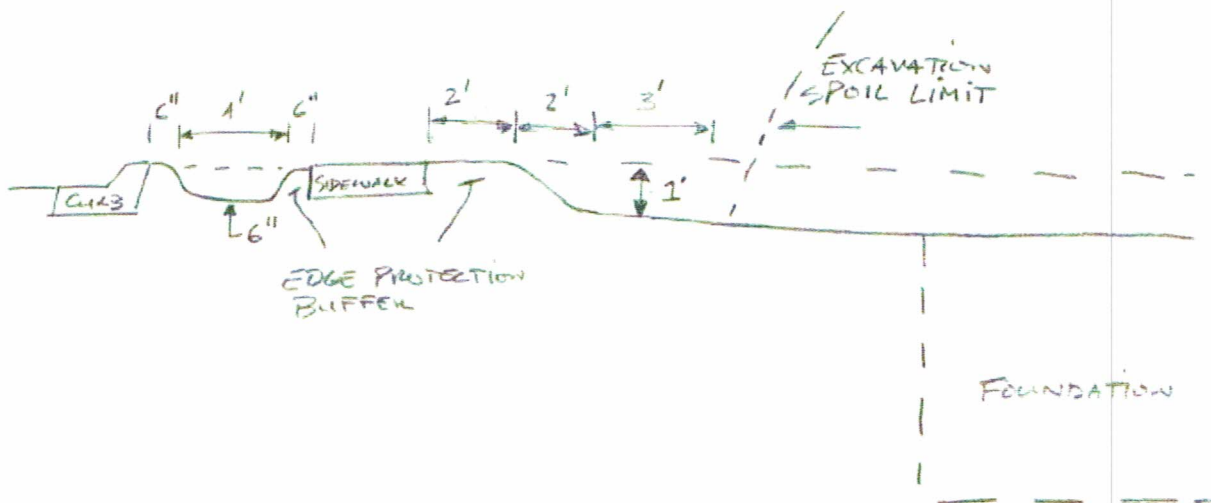
Installation Schedule: Install the LOT Cut Down just prior to footing excavation.

Maintenance Requirements: Restore when more than 50% of the Cut Down is filled with sediment from erosion deposition or construction activities fill beyond the minimum dimensions.

Applicable Trades: Primarily the excavator and grading subs but any trades whose activity damages this BMP

Maintenance Personnel: Excavator, Grading Subs or trades who damage this BMP.

Detail:



2.3.2 Gutter Dam

Operation and Site Condition: An inlet is located at the bottom of the cul-de-sac which is at a roadway sag. Inlet protection can cause flooding and will likely damaged adjacent residential property. Therefore a gutter dam has been selected to be a redundant BMP to the other sediment control BMPs. This BMP is designed with dual catchments so performance can be measured. A property maintained gutter dam and the other erosion boundary control BMPs should be sufficient for this size of project.

Instruction: Install 6" dia $\frac{3}{4}$ " gravel filled bag filters installed per detail and site plan. Do drive on or park over this BMP.

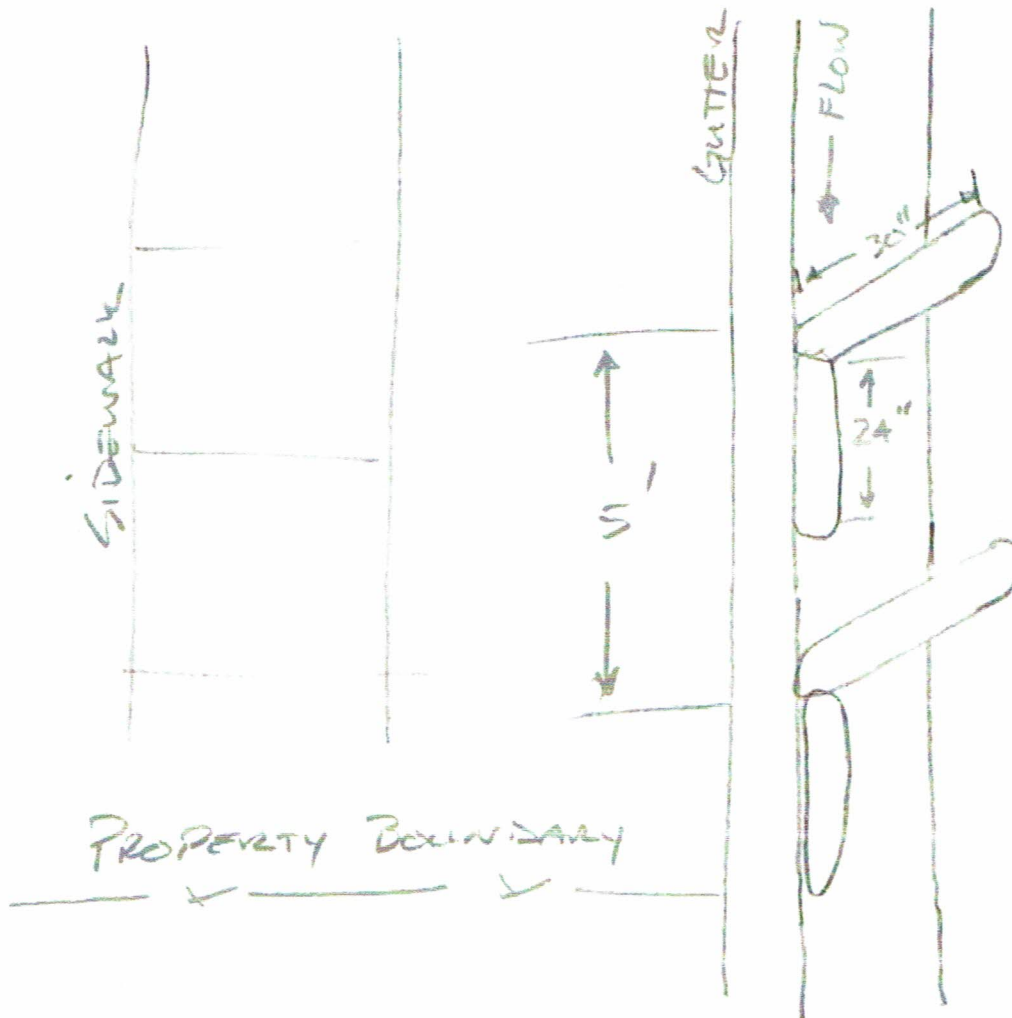
Installation Schedule: Prior to any land disturbance

Maintenance Requirements: Maintain per the minimum.

Applicable Trades: NA

Maintenance Personnel: Project Manager. Any trade damaging this BMP is expected to prepare or replace it

Detail:



2.3.4 Manual Sweeping

Operation and Site Conditions: Some operations require driving off durable surfaces and the track out or boundary controls can fail which will necessitate cleaning of the streets and gutters.

Instruction: Square nose shovel and broom. All trades are expected to remove tracked out or mud and dirt that end up on street from regular operations. Repeat removal until no more mud can be picked up. Do not worry about the dirt stain and do not wash with water. The small amounts of mud trapped in the tread will also spread dirt on the streets overtime. In this case the mud will be removed by BMP 2.3.3.

Schedule: NA.

Maintenance: Immediately following the incident. Minor track out not causing a public nuisance and no risk of being washed to stormwater systems may be removed at end of day or before forecast storm event whichever comes first.

Maintenance Personnel: Any trade tracking the mud

Applicable Trades: All

Detail: NA

2.3.5 Topsoil Preservation Policy

Operation or Site Condition: Topsoil will be removed by the excavation and general grading operations also most of the sites surface will be disturbed by all trades involved in this home. It is necessary to remove and stockpile the topsoil in the footing and general home grading envelope so is can be preserved and reused.

Instruction:

1. Excavator X, remove topsoil under the footing, spoil zone and general home grading envelope. Stockpile in the back of and middle of LOT 2 for the final grading construction phase. Note, this is not intended for the foundation backfill or the non topsoil spoil that must be hauled off.
2. Grader X, spread topsoil during last phase.
3. Apply BMP 2.3.1 water erosion control and apply BMP 2.4 dust control.

Installation Schedule: NA

Maintenance Requirements: NA

Applicable Trades: Excavator X and Grader X

Maintenance Personnel: NA

Detail: NA

2.4.1 Hose

Operation or Site Condition: Excavation, grading and even other normal construction activity will kick up dust on hot windy days.

Instruction: Garden hose provided for construction operations kicking up dust or other activities involving light weight powdery materials.

Installation Schedule: Provide hose connected to a culinary water jumper from City Water Department prior to land disturbance.

Maintenance: Generally, apply during excavation, grading and mortar mixing operations. Also prior to end of work day ground is powdery.

Maintenance Personnel: Project Manager will watch for general dry dusty conditions. However, each trade will be expected to use this BMP for operations they are responsible for. Primarily for excavation, grading and Brick Mason operations however any trade kicking up dust is expected to implement this BMP.

Applicable Trades: Primarily Excavator, Grader and Brick Masons but also any trade whose operation is kicking up dust.

Detail: NA

2.5.1 Scrape Tires

Operation or Site Condition: It is not practical to provide a parking pad for the excavation, forklift and final grade operations, therefore it is necessary to scrape tires or tracks.

Instruction: Remove mud from tires and tracks by scraping. Any tool effective at removing mud is fine.

Schedule: NA

Maintenance: Upon incident. Apply roadway clean up per BMPs 2.3.3 & 2.3.4.

Maintenance Personnel: Perpetrating tradesmen

Applicable Trades: All tradesmen whose activity causes mud to stick to tires or tracks.

Detail: NA

2.5.2 Parking Pad

Operation or Site Condition: Most tradesmen will need to enter and exit the site either to transport tools or supplies. The parking pad system intended to prevent mud from sticking to tires or tracks.

Instruction: All tradesmen are required to park on the parking pad or the street except for the tradesmen authorized by me to drive off the pad. Any trades with mud on tires must apply BMP 2.5.1. The forklift, excavator, skid-steer operators are the only persons allowed off the pad, however, they are required to apply BMP 2.5.1 and 2.3.4 as part of their normal operation. Do not allow mud to remain on the road as you will be required to scrape and broom it manually.

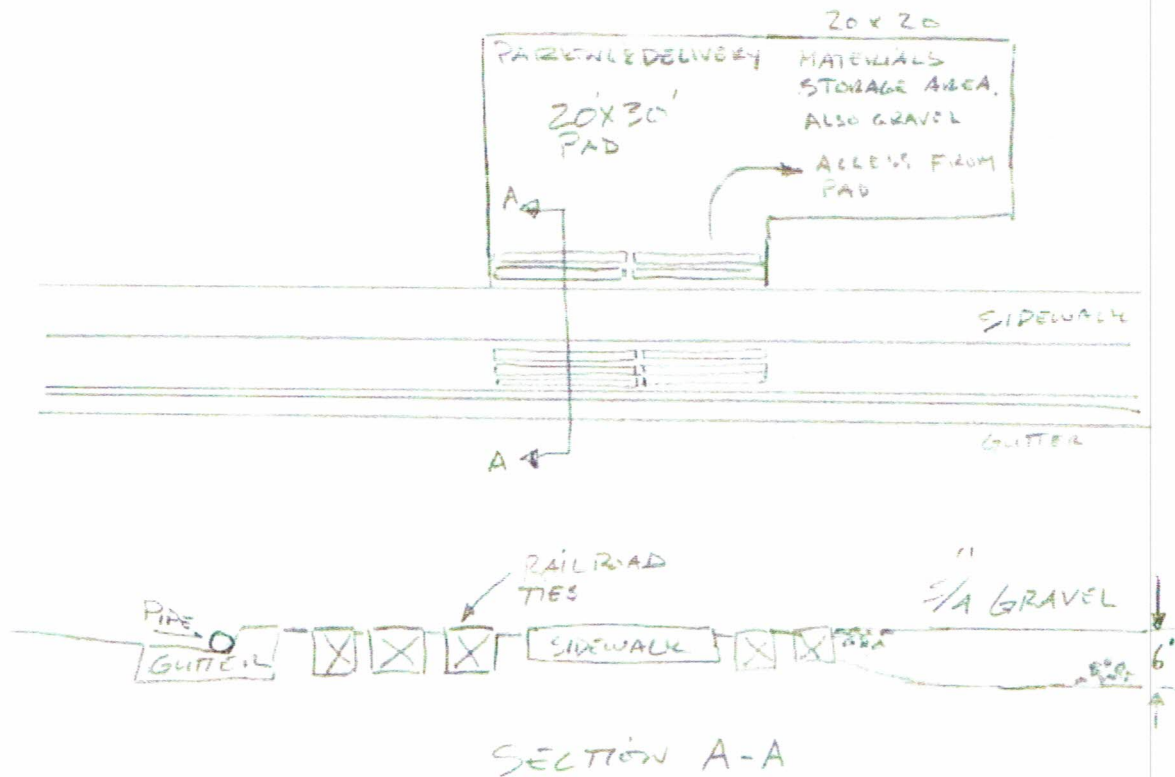
Installation Schedule: Following backfill of foundation

Maintenance Requirements: Replace gravel or rake when mud or dirt is sticking to tires

Applicable Trades: All trades driving onto the site

Maintenance Personnel: Project Manager. Inform me if you notice any problems.

Detail:



2.5.3 Forklift Policy

Operation or Site Condition: Forklift operators will need to cross the road multiple times a day to service multiple homes.

Instruction: Forklift operator must stop the vehicle immediately after crossing back over the curb and remove any mud chunks from the road. To prevent the hassle of removing mud, it will be best if you schedule your Forklift operations during dry weather. The manual sweeping will need to meet the requirements in BMP 2.3.4 Manual Sweeping.

Installation Schedule: NA

Maintenance Requirements: Upon incident

Applicable Trades: Framer Co. x, Drywall Co. x, Landscape Co. x

Maintenance Personnel: Forklift Operator

Detail: NA

2.5.3 Forklift Policy

Operation or Site Condition: Forklift operators will need to enter and travel on the road to reach the north, west and south sides of the home.

Instruction: Forklift operator must stop the vehicle immediately after crossing back over the curb and remove any mud chunks from the road. To prevent the hassle of removing mud, it will be best if you schedule your Forklift operations during dry weather. The manual sweeping will need to meet the requirements in BMP 2.3.4 Manual Sweeping.

Installation Schedule: NA

Maintenance Requirements: Upon incident

Applicable Trades: Framer Co. x, Drywall Co. x, Landscape Co. x

Maintenance Personnel: Forklift Operator

Detail: NA

2.6.1 Trash Receptacle

Operation or Site Conditions: All trades can generate light weight trash from the lunch box alone however, most will generate light weight trash as part of their operation. Light weight trash is the primary concern because it can blow off the site.

Instruction: I have provided (2) 60 gal trash receptacles with lids chained to post. All trades are required to use these or put your trash in your own vehicle. Do not fill receptacles with heavy weight trash see BMP 2.6.2 for heavy weight trash.

Schedule: Prior to land disturbance

Maintenance: Ensure lids are always closed. Dump when trash is spilling over.

Maintenance Personnel: Project Manager. All trades are expected to close lids.

Applicable Trades: All trades generating light weight trash of any kind

Detail: NA

2.6.2 Heavy Trash Policy

Operation or Site Condition: This site will likely generate 30 yards of heavy trash

Instruction: To maintain room or all tradesmen pile all heavy trash in designated location shown on site map. Do not place light weight trash with the heavy weight trash. See BMP 2.6.1 for light weight trash control

Schedule: NA

Maintenance: Remove when spilling beyond trash envelop shown on site plan

Maintenance Personnel: Project Manager. All trades generating heavy trash.

Applicable Trades: All trades generating heavy trash or waste.

Detail: NA

2.6.3 Excavation Spoil Envelope and Policy

Operation or Site Condition: Because this LOT is ¼ acre excavation spoil envelope will be limited therefore it is necessary to identify the envelope.

Instruction: Excavator X maintain spoil within designated envelop shown on site map. Any spoil that does not fit inside the envelope must hauled off as excavated.

Schedule: NA

Maintenance: NA

Maintenance Personnel: NA

Applicable Trades: Primarily Excavator X

Detail: NA