

# JERRY AND KATIE HOMESTEAD

A PART OF THE S. E. 1/4 OF SEC. 22 T. 6 N., R. 3W., S.L.B. & M.  
WEBER COUNTY, UTAH  
JUNE 2013

## SURVEYORS CERTIFICATE

I, DALLAS K. BUTTARS, HOLDING LICENSE NUMBER 167594 IN ACCORDANCE WITH TITLE 58, CHAPTER 22, PROFESSIONAL ENGINEERS AND LAND SURVEYORS LICENSING ACT, HAVE COMPLETED A SURVEY OF THE PROPERTY DESCRIBED ON THE PLAT IN ACCORDANCE WITH SECTION 17-23-17 AND HAVE VERIFIED ALL MEASUREMENTS AND PLACED MONUMENTS AS REPRESENTED ON THE PLAT.

I DO ALSO HEREBY CERTIFY THAT THIS PLAT OF JERRY and KATIE HOMESTEAD SUBDIVISION IN WEBER COUNTY, UTAH, HAS BEEN CORRECTLY DRAWN TO SCALE AND IS A TRUE AND CORRECT REPRESENTATION OF THE FOLLOWING DESCRIPTION OF LANDS INCLUDED IN SAID SUBDIVISION, BASED ON DATA COMPILED FROM RECORDS IN THE WEBER COUNTY RECORDERS OFFICE, WEBER COUNTY SURVEYORS OFFICE AND OF A SURVEY MADE ON THE GROUND, AND THAT THIS SURVEY MEETS THE REQUIREMENTS OF WEBER COUNTY ZONING.

SIGNED THIS \_\_\_\_\_ DAY OF \_\_\_\_\_ 20\_\_

## OWNERS DEDICATION

WE THE UNDERSIGNED OWNERS OF THE HEREIN DESCRIBED TRACT OF LAND, DO HEREBY SET APART AND SUBDIVIDE THE SAME INTO LOTS AND STREETS AS SHOWN HEREON AND NAME SAID TRACT JERRY and KATIE HOMESTEAD SUBDIVISION AND ALSO GRANT AND DEDICATE A PERPETUAL RIGHT AND EASEMENT OVER, UPON AND UNDER THE LANDS DESIGNATED HEREON AS PUBLIC UTILITY, STORM WATER DETENTION PONDS DRAINAGE EASEMENTS, THE SAME TO BE USED FOR THE INSTALLATION, MAINTENANCE AND OPERATION OF PUBLIC UTILITY SERVICE LINE, STORM DRAINAGE FACILITIES OR FOR THE PERPETUAL PRESERVATION OF WATER CHANNELS IN THEIR NATURAL STATE WHICHEVER IS APPLICABLE AS MAY BE AUTHORIZED BY THE GOVERNING AUTHORITY, WITH NO BUILDINGS OR STRUCTURES BEING ERRECTED WITHIN SUCH EASEMENTS.

SIGNED THIS \_\_\_\_\_ DAY OF \_\_\_\_\_ 20\_\_

## ACKNOWLEDGMENT

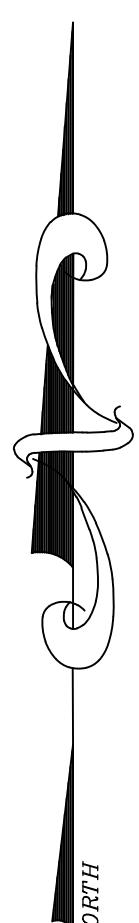
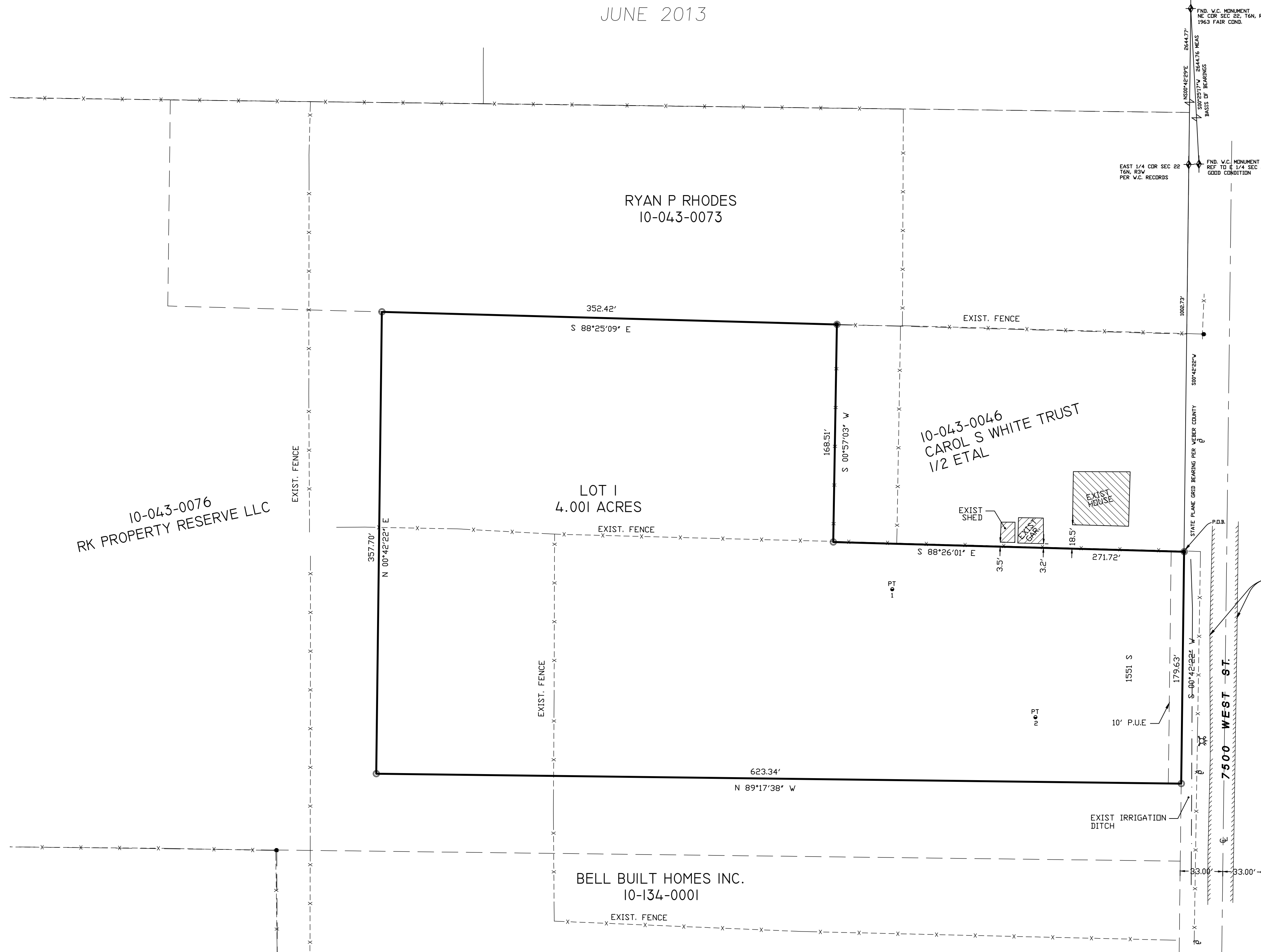
STATE OF UTAH )  
COUNTY OF WEBER )  
ON THIS \_\_\_\_\_ DAY OF \_\_\_\_\_ 20\_\_, PERSONALLY APPEARED BEFORE ME, THE UNDERSIGNED NOTARY PUBLIC, THE SIGNERS OF THE ABOVE OWNERS DEDICATION \_\_\_\_\_ IN NUMBER, WHO DULY ACKNOWLEDGED TO ME THAT THEY SIGNED IT FREELY AND VOLUNTARILY AND FOR THE PURPOSES THEREIN MENTIONED.

COMMISSION EXPIRES \_\_\_\_\_ NOTARY PUBLIC

## BOUNDARY DESCRIPTION

PART OF THE SOUTHEAST QUARTER OF SECTION 22, TOWNSHIP 6 NORTH, RANGE 3 WEST, SALT LAKE BASE & MERIDIAN, U.S. SURVEY, DESCRIBED AS FOLLOWS:

BEGINNING AT A POINT SOUTH 0°42'22" WEST ALONG THE QUARTER SECTION LINE 1002.73 FEET FROM THE EAST QUARTER OF SAID SECTION 22; RUNNING THENCE SOUTH 00°42'22" WEST 179.63 FEET; THENCE NORTH 89°17'38" WEST 623.34 FEET; THENCE NORTH 00°42'22" EAST 357.70 FEET; THENCE SOUTH 88°25'09" EAST 352.42 FEET; THENCE SOUTH 00°57'03" WEST 168.51 FEET; THENCE SOUTH 88°25'09" EAST 271.72 FEET TO THE QUARTER SECTION LINE AND POINT OF BEGINNING. CONTAINS 4.001 ACRES.



SCALE: 1" = 50'

- = 5/8"Ø x 24" REBAR WITH CAP STAMPED 172757
- PT = PERCOLATION TEST PIT

### PERC TABLE

PERC TEST HOLE	DEPTH, IN.	SOILS EVALUATION #10905, WEBER-MORGAN HEALTH DEPARTMENT
NO. 1	52"	0-12" SANDY CLAY LOAM, GRANULAR STRUCTURE, ORGANICS
		14-24" SANDY CLAY LOAM, PRISMATIC STRUCTURE, WHITE COLOR
		24-40" SILTY CLAY LOAM, MASSIVE STRUCTURE
		40-52" SANDY LOAM, MASSIVE STRUCTURE, FINE SANDS
NO. 1	48"	0-7" LOAM, GRANULAR STRUCTURE
		7-15" LOAM, MASSIVE STRUCTURE
		15-23" SILTY CLAY LOAM, MASSIVE STRUCTURE
		23-32" SILTY LOAM, MASSIVE STRUCTURE
		32-48" SANDY LOAM, MASSIVE STRUCTURE
		48" OBSERVED GROUND WATER TABLE
PERCOLATION RATES OF 120 MPI AND GROUND WATER TABLES OF 24"		

### NARRATIVE

THE PURPOSE OF THIS SURVEY WAS TO CREATE A WEBER COUNTY APPROVED SUBDIVISION FROM AN EXISTING PARCEL.

THE RIGHT OF WAY OF 7500 WEST WAS DETERMINED FROM OTHER FILED SURVEYS ALONG THE ROAD FROM 1989 BY CLS AND 2011 BY REEVE AND ASSOCIATES.

### AGRICULTURAL NOTE

AGRICULTURE IS THE PREFERRED USE IN THE AGRICULTURE ZONES. AGRICULTURE OPERATIONS AS SPECIFIED IN THE ZONING ORDINANCE FOR A PARTICULAR ZONE ARE PERMITTED AT ANY TIME INCLUDING THE OPERATION OF FARM MACHINERY AND NO ALLOWED AGRICULTURE USE SHALL BE SUBJECT TO RESTRICTION ON THE BASIS THAT IT INTERFERES WITH ACTIVITIES OF FUTURE RESIDENTS OF THIS SUBDIVISION.

### WEBER-MORGAN HEALTH DEPARTMENT

I HEREBY CERTIFY THAT THE SOILS, PERCOLATION RATES, AND SITE CONDITION FOR THIS SUBDIVISION HAVE BEEN INVESTIGATED BY THIS OFFICE AND ARE APPROVED FOR ON-SITE WASTEWATER DISPOSAL SYSTEMS.

SIGNED THIS \_\_\_\_\_ DAY OF \_\_\_\_\_ 20\_\_

\_\_\_\_\_  
DIRECTOR, WEBER-MORGAN HEALTH DEPARTMENT.

### WEBER COUNTY PLANNING COMMISSION APPROVAL

THIS IS TO CERTIFY THAT THIS SUBDIVISION PLAT WAS DULY APPROVED BY THE WEBER COUNTY PLANNING COMMISSION ON THE \_\_\_\_\_ DAY OF \_\_\_\_\_ 20\_\_

\_\_\_\_\_  
SIGNATURE

### WEBER COUNTY ENGINEER

I HEREBY CERTIFY THAT THE REQUIRED PUBLIC IMPROVEMENT STANDARDS AND DRAWINGS FOR THIS SUBDIVISION CONFORM WITH COUNTY STANDARDS AND THE AMOUNT OF THE FINANCIAL GUARANTEE IS SUFFICIENT FOR THE INSTALLATION OF THESE IMPROVEMENTS.

SIGNED THIS \_\_\_\_\_ DAY OF \_\_\_\_\_ 20\_\_

\_\_\_\_\_  
SIGNATURE

### WEBER COUNTY SURVEYOR

I HEREBY CERTIFY THAT THE WEBER COUNTY SURVEYOR'S OFFICE HAS REVIEWED THIS PLAT FOR MATHEMATICAL CORRECTNESS, SECTION CORNER DATA, AND FOR HARMONY WITH LINES AND MONUMENTS ON RECORD IN COUNTY OFFICES. THE APPROVAL OF THIS PLAT BY THE WEBER COUNTY SURVEYOR DOES NOT RELIEVE THE LICENSED LAND SURVEYOR WHO EXECUTED THIS PLAT FROM THE RESPONSIBILITIES AND/OR LIABILITIES ASSOCIATED THEREWITH.

SIGNED THIS \_\_\_\_\_ DAY OF \_\_\_\_\_ 20\_\_

\_\_\_\_\_  
SIGNATURE

### WEBER COUNTY ATTORNEY

I HAVE EXAMINED THE FINANCIAL GUARANTEE AND OTHER DOCUMENTS ASSOCIATED WITH THIS SUBDIVISION PLAT AND IN MY OPINION THEY CONFORM WITH THE COUNTY ORDINANCE APPLICABLE THERETO AND NOW IN FORCE AND AFFECT.

SIGNED THIS \_\_\_\_\_ DAY OF \_\_\_\_\_ 20\_\_

\_\_\_\_\_  
SIGNATURE

### WEBER COUNTY COMMISSION ACCEPTANCE

THIS IS TO CERTIFY THAT THIS SUBDIVISION PLAT, THE DEDICATION OF STREETS AND OTHER PUBLIC WAYS AND FINANCIAL GUARANTEE OF PUBLIC IMPROVEMENTS ASSOCIATED WITH THIS SUBDIVISION, THEREON ARE HEREBY APPROVED AND ACCEPTED BY THE COMMISSIONERS OF WEBER COUNTY, UTAH THIS \_\_\_\_\_ DAY OF \_\_\_\_\_ 20\_\_.

\_\_\_\_\_  
TITLE: CHAIRMAN, WEBER COUNTY COMMISSION

\_\_\_\_\_  
ATTEST:

DEVELOPER:  
BELL BUILT HOMES INC.  
587 S 7900 W  
WEST WARREN, UT 84404  
ph: 801-458-1685

<b>LANDMARK SURVEYING, INC.</b> A COMPLETE LAND SURVEYING SERVICE 4646 S. 3500 W. #A-3, WEST HAVEN, UTAH 84401 PHONE 801-731-4075 FAX 801-731-8506		WEBER COUNTY RECORDER ENTRY # _____ FEE _____ FILED FOR RECORD & RECORDED THIS _____ DAY OF _____ 20__ AT _____ IN BOOK _____ OF _____ PAGE _____ _____ WEBER COUNTY RECORDER BY _____ DEPUTY
CLIENT: CLIFF BELL LOCATION: SE 1/4 SEC 22 T.6N., R.3W., S.L.B.&M. SURVEYED: JULY 2012		
REVISIONS: _____ _____ _____	DRAWN BY: TDK CHECKED BY: DKB DATE: 07-27-12 FILE: 3292-J&K SUB	