

MULTI ZONE HEAT PUMP SCHEDULE

| INDOOR UNIT | | | | | | | | | | | CONDENSING UNIT | | | | | | | | | | | REMARKS | | | | | |
|-------------|-----------------|------------------------|---------------------------|---------------------------|------|------|---------|---|----------------|----|-----------------|------|----------------|---------------------------|---------------------------|------|------|---------|---|----|--------------------------------|---------|--------------------|---------|---------|--|--|
| NO. | MAKE & MODEL | LOCATION | COOLING CAPACITY (BTU/HR) | HEATING CAPACITY (BTU/HR) | CFM | ESP | V | φ | RATED AMPS (A) | HZ | WT (LBS.) | NO. | MAKE & MODEL | COOLING CAPACITY (BTU/HR) | HEATING CAPACITY (BTU/HR) | SEER | HSPF | V | φ | HZ | COMPRESSOR AMPS (A) | | FAN MOTOR AMPS (A) | MCA (A) | MOP (A) | WT (LBS.) | |
| FC 1 | LG ARNU483BRA4 | FOYER/ MUD ROOM/OFFICE | 48,100 | 51,200 | 1582 | 0.55 | 208-230 | 1 | 3.5 | 60 | 115 | HP 1 | LG ARUM192BTE5 | 192,000 | 216,000 | - | - | 208-230 | 3 | 60 | COMP (A) 23.3 COMP (B) 20.8 | 8.0 | 57.9 | 80 | 660 | W/ PROGRAMMABLE THERMOSTAT, W/ SELF DIAGNOSIS SETTING W/ MERV-8 FILTER, W/ CONDENSATE OVERFLOW SWITCH TO SHUT OFF FAN COIL UNIT. | |
| FC 2 | LG ARNU303NJA4 | MASTER/ LIVING | 30,000 | 34,000 | 880 | 0.5 | 208-230 | 1 | 1.12 | 60 | 120 | | | | | | | | | | | | | | | | |
| FC 3 | LG ARNU363NJA4 | KITCHEN | 36,000 | 40,000 | 990 | 0.5 | 208-230 | 1 | 1.12 | 60 | 121 | | | | | | | | | | | | | | | | |
| FC 4 | LG ARNU483BRA4 | LIVING/ FAMILY | 48,100 | 51,200 | 1582 | 0.55 | 208-230 | 1 | 3.5 | 60 | 115 | | | | | | | | | | | | | | | | |
| FC 5 | LG ARNU283BGA45 | BASEMENT | 28,000 | 31,500 | 915 | 0.39 | 208-230 | 1 | 2.65 | 60 | 85 | | | | | | | | | | | | | | | | |

* REFRIGERATION PIPE SIZES SHALL BE COORDINATED WITH MANUFACTURE BASED ON EXACT REFRIGERATION PIPE LENGTHS AND ELBOWS IN THE SYSTEM.
 ** VERIFY EXACT AVAILABLE VOLTAGE & PHASE, W/ ELECTRICAL ENG. PRIOR TO ORDERING THE AC UNITS, ELECTRICIAN TO VERIFY WITH MANUFACTURER FOR FUSE SIZE & FEEDER SIZE.

EXHAUST FANS SCHEDULE

| SYMBOL | MAKE | MODEL | CFM | S.P. | ELECTRICAL | | | WT.(LBS) | SERVICE | REMARKS | |
|--------|-----------|---------|-----|-------|------------|-----|---|----------|---------|-----------------|--|
| | | | | | POWER | V | φ | | | | |
| EF 1 | BROAN | XB110 | 110 | 0.25 | 0.3 AMPS | 120 | 1 | 60 | 20 | POWDER ROOM | ENERGY STAR COMPLIANT EXHAUST FAN W/ BACK DRAFT DAMPER, W/ DISCONNECT SWITCH, RUN CONTINUOUS TO MEET ASHRAE 62.2 COMPLIANCE. |
| EF 2 | BROAN | XB110H | 110 | 0.25" | 0.3 AMPS | 120 | 1 | 60 | 20 | BATHROOM | ENERGY STAR COMPLIANT EXHAUST FAN, W/ BACK DRAFT DAMPER, W/ DISCONNECT SWITCH, CONTROLLED BY LIGHT SWITCH AND BUILT-IN HUMIDISTAT. |
| EF 3 | GREENHECK | BCF-106 | 200 | 0.25" | 1/10 HP | 120 | 1 | 60 | 80 | MASTER BATH | W/ BACK DRAFT DAMPER, W/ DISCONNECT SWITCH, CONTROLLED BY LIGHT SWITCH AND HUMIDISTAT. |
| EF 4 | BROAN | QTXE150 | 150 | 0.25" | 0.5 AMPS | 120 | 1 | 60 | 20 | LAUNDRY | W/ BACK DRAFT DAMPER, W/ DISCONNECT SWITCH, CONTROLLED BY LIGHT SWITCH. |
| EF 5 | BROAN | XB110 | 110 | 0.25" | 0.3 AMPS | 120 | 1 | 60 | 20 | TOILET ROOM | W/ BACK DRAFT DAMPER, W/ DISCONNECT SWITCH, CONTROLLED BY LIGHT SWITCH. |
| EF 6 | GREENHECK | BCF-106 | 300 | 0.25" | 1/10 HP | 120 | 1 | 60 | 80 | GENERAL EXHAUST | W/ BACK DRAFT DAMPER, W/ DISCONNECT SWITCH, CONTROLLED BY LIGHT SWITCH. |

WHOLE-BUILDING VENTILATION REQUIREMENTS (FROM ASHRAE 62.2)
 AT LEAST ONE MECHANICAL VENTILATION SYSTEM IN THE BUILDING MUST BE DESIGNATED FOR USE IN COMPLIANCE WITH THE WHOLE-BUILDING VENTILATION REQUIREMENT. ALTERNATIVELY, THE SUM OF THE RATED AIRFLOWS FROM MULTIPLE FANS CAN BE UTILIZED TO MEET THE REQUIRED WHOLE-BUILDING VENTILATION AIRFLOW. THE SYSTEM(S) MUST DELIVER CONTINUOUS VENTILATION AIRFLOW AT A RATE GREATER THAN OR EQUAL TO THE RATE SPECIFIED IN EQUATION 4.1a, AND FAN SONE RATINGS MUST NOT EXCEED 1.0. FOR DWELLING OCCUPANT DENSITIES KNOWN TO BE GREATER THAN (N_{br} + 1), THE RATE SHALL BE INCREASED BY 7.5 CFM FOR EACH ADDITIONAL PERSON.

Where:
 A_{floor} = conditioned floor area, ft²
 N_{br} = number of bedrooms; not to be less than one
 Q_{req} = ventilation air requirement = fan flow rate, (cfm)

Eq 4.1a Calculation:
 A_{floor} = 4,885
 N_{br} = 5
 Q_{req} = 192

(Eq 4.1a) Q_{req} = 0.03A_{floor} + 7.5(N_{br} + 1)

H.V.A.C. LEGEND

| SYMBOL | ABBREV. | DESCRIPTION |
|--------|---------|-----------------------------|
| | | DUCT RISER |
| | | DUCT DROP |
| | | DUCT SECTION (SUPPLY) |
| | | DUCT SECTION (RETURN) |
| | | DUCT SECTION (EXHAUST) |
| | C.D. | CEILING DIFFUSER |
| | R.A.R. | RETURN AIR REGISTER |
| | E.G. | EXHAUST AIR GRILLE |
| | S.W.S. | SIDE WALL SUPPLY |
| | S.W.R. | SIDE WALL RETURN |
| | S.W.E. | SIDE WALL EXHAUST |
| | R.G. | RELIEF GRILLE |
| | M.V.D. | MANUAL VOLUME DAMPER |
| | B.D.D. | BACK DRAFT DAMPER |
| | A.V.D. | AUTOMATIC VOLUME DAMPER |
| | D.L. | DOOR LOUVER |
| | STAT | ROOM THERMOSTAT |
| | D.H. | DUCT HEATER |
| | U.C. | UNDER-CUT |
| | C.W.S. | COND. WATER SUPPLY |
| | C.W.R. | COND. WATER RETURN |
| | H.W.S. | HOT WATER SUPPLY |
| | H.W.R. | HOT WATER RETURN |
| | CH.W.S. | CHILLED WATER SUPPLY |
| | CH.W.R. | CHILLED WATER RETURN |
| | | DIRECTION OF FLOW |
| | G.V. | GATE VALVE |
| | B.V. | BUTTERFLY VALVE |
| | RED. | REDUCER |
| | STR. | STRAINER |
| | U | UNION |
| | P.G. | PRESSURE GAUGE |
| | A.D. | ACCESS DOOR |
| | A.P. | ACCESS PANEL |
| | S.A. | SUPPLY AIR |
| | R.A. | RETURN AIR |
| | E.A. | EXHAUST AIR |
| | C.A. | COMBUSTION AIR |
| | O.S.A. | OUTSIDE AIR |
| | DN. | DOWN |
| | CLG. | CEILING |
| | S.W.S. | SIDEWALL SUPPLY |
| | S.W.R. | SIDEWALL RETURN |
| | N.C. | NORMALLY CLOSED |
| | N.O. | NORMALLY OPEN |
| | N.I.C. | NOT IN CONTRACT |
| | P.O.C. | POINT OF CONNECTION |
| | G.C. | GENERAL CONTRACTOR |
| | P.C. | PLUMBING CONTRACTOR |
| | E.C. | ELECTRICAL CONTRACTOR |
| | U.T.R. | UP THRU ROOF |
| | | FLEX. CONN. IN DUCT |
| | | TURNING VANES |
| | | EXTRACTORS |
| | | FURN. & INST. BY ELEC. |
| | | FURN. & INST. BY MECH. |
| | | EXPANSION VALVE |
| | C.A. | CONTROL AIR |
| | | DUCT LINING |
| | M.C.A. | MAX. CIRCUIT AMPACITY |
| | T.S.P. | TOTAL STATIC PRESSURE |
| | F.L.A. | FULL LOAD AMP |
| | B.D.D. | BACK DRAFT DAMPER |
| | M.BH | THOUSAND BTUH |
| | E.R. | EXHAUST REGISTER |
| | SFD | SMOKE AND FIRE DAMPER |
| | SD | SMOKE DUCT DETECTOR |
| | | POINT OF CONNECTION |
| | | THERMOSTAT SENSOR |
| | FSD | FLOOR SUPPLY DIFFUSER |
| | FRD | FLOOR RETURN DIFFUSER |
| | LSD | LINEAR SLOT SUPPLY DIFFUSER |
| | LRD | LINEAR SLOT RETURN DIFFUSER |
| | O.B.D. | OPPOSED BLADE DAMPER |

POWDER MOUNTAIN HOUSE

OWNER:
TOM BUTTGENBACH
 8645 EASET COPPER CREST
 EDEN, UT 84310

| | | | | | | | | |
|--|--|--|--|---|---|---|--|---|
| ARCHITECT: TOM WISCOMBE ARCHITECTURE 2454 WILSHIRE BLVD., SUITE 48 LOS ANGELES, CA 90007 (213) 674-2238 WWW.TOMWISCOMBE.COM | STRUCTURAL ENGINEER: NOUS 527 W 7TH STREET LOS ANGELES, CA 90014 (213) 627-6887 WWW.TALISMANENGINEERING.COM | CIVIL ENGINEER: TALISMAN 527 W 7TH STREET MURRAY, UT 84107 (801) 745-1800 WWW.TALISMANCIVIL.COM | MECHANICAL / PLUMBING: SHAMIM 5520 CORBIN AVE., SUITE 300 IRVINE, CA 92618 (949) 788-6778 WWW.SHAMIMENGINEERING.COM | ELECTRICAL: ABRARI 111 WEST 7TH STREET, 10TH FLOOR LOS ANGELES, CA 90017 (323) 536-2578 WWW.ABRARI.COM | NGBS CONSULTING: ARGENTO/GRAHAM 911 WEST 7TH STREET, 10TH FLOOR LOS ANGELES, CA 90017 (323) 536-2578 WWW.ARGENTOGRAHAM.COM | GEOTECHNICAL: IGES 2702 SOUTH 1030 WEST SUITE 10 SALT LAKE CITY, UT 84120 (801) 270-9400 WWW.IGESINC.COM | LANDSCAPE ARCHITECT: LDG 328 W 200 S SUITE 102 SALT LAKE CITY, UT 84101 (801) 583-1255 | LIGHTING DESIGNER: KGM 328 W 200 S SUITE 102 SALT LAKE CITY, UT 84101 (801) 583-1255 WWW.KGMLIGHTING.COM |
|--|--|--|--|---|---|---|--|---|



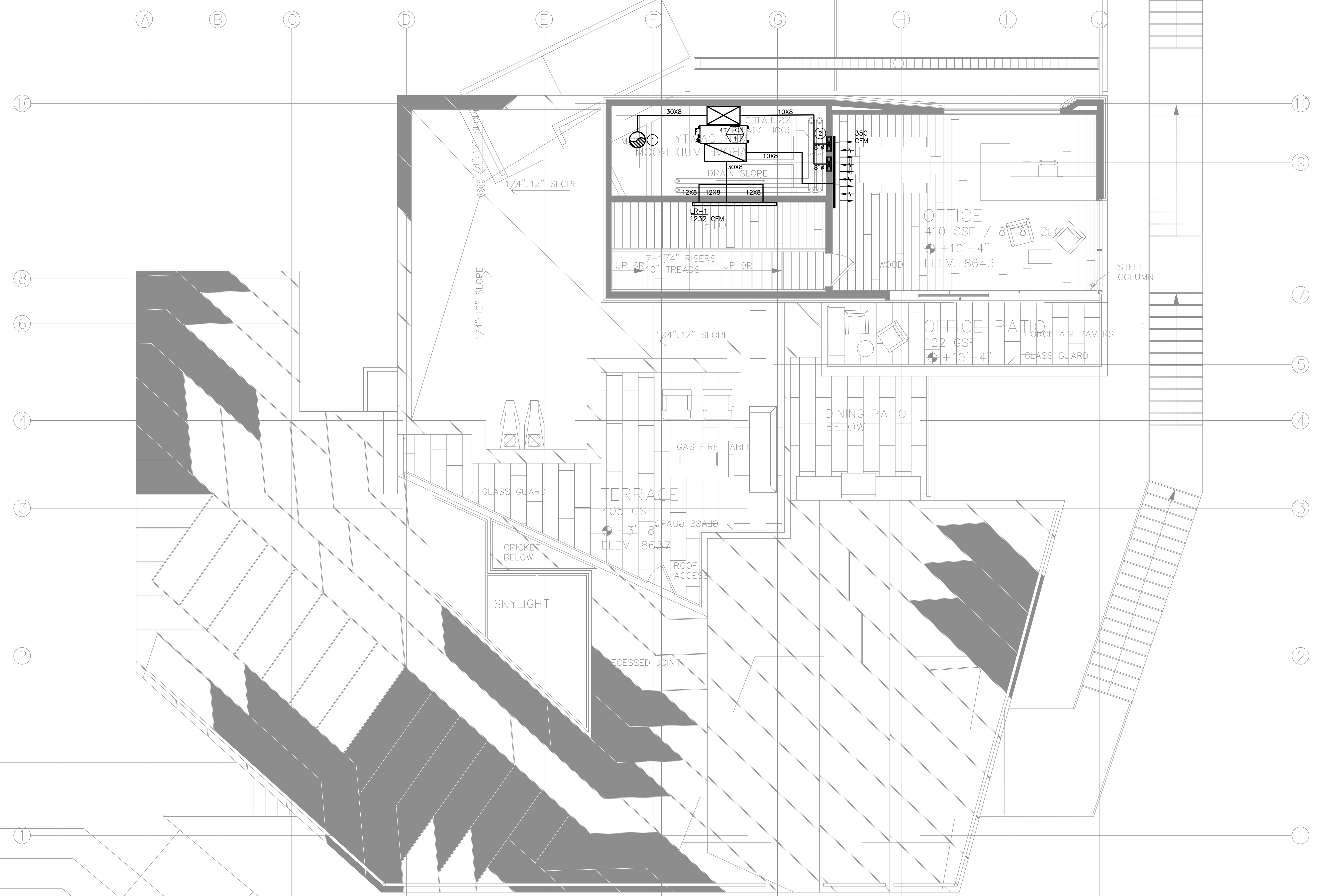
SCHEDULES, NOTES, & LEGEND

| | | | |
|------------|-----|-------|---------------------|
| REVISIONS: | BY: | DATE: | DATE: |
| | | | 05/05/2018 |
| | | | SCALE: 1/4" = 1'-0" |
| | | | DRAWN: K.S. |
| | | | SHEET: M1.0 |

- NOTES:**
- AIR INLETS THAT ARE PART OF THE VENTILATION DESIGN SHALL BE LOCATED A MINIMUM OF 10 FEET FROM KNOWN SOURCES OF CONTAMINATION SUCH AS A STACK VENT OR EXHAUST TERMINATION. THE INTAKE SHALL BE PLACED SO THAT ENTERING AIR IS NOT OBSTRUCTED. FORCED AIR INLETS SHALL BE PROVIDED WITH RODENT/INSECT SCREENS (MESH NOT LARGER THAN 1/2 INCH).
 - PROVIDE LINED SUPPLY AIR AND RETURN AIR PLENUM.

NUMBERED NOTES:

- 16"Ø SUPPLY DUCT DOWN.
- 2) 14X5 SUPPLY DUCTS DOWN TO LOWER WALL. GRILLE TO BE 12" ABOVE FROM FLOOR. WALL RETURN TO BE 10" FROM CEILING.



POWDER MOUNTAIN HOUSE

OWNER:
TOM BUTTGENBACH
8645 EASET COPPER CREST
EDEN, UT 84310

| | | | | | | | | |
|--|--|---|--|--|---|---|---|---|
| ARCHITECT: TOM WISCOMBE ARCHITECTURE <small>2454 WILSHIRE BLVD., SUITE 48 LOS ANGELES, CA 90057 (213) 674-2238 WWW.TOMWISCOMBE.COM</small> | STRUCTURAL ENGINEER: NOUS <small>527 W 7TH STREET LOS ANGELES, CA 90014 (213) 627-6887 WWW.NOUSENGINEERING.COM</small> | CIVIL ENGINEER: TALISMAN <small>5277 SOUTH STATE STREET MURRAY, UT 84107 (801) 745-1300 WWW.TALISMANCIVIL.COM</small> | MECHANICAL / PLUMBING: SHAMIM <small>5520 CORBIN AVE., SUITE 300 IRVINE, CA 92618 (949) 788-6778 WWW.SHAMIMENGINEERING.COM</small> | ELECTRICAL: ABRARI ENGINEERING <small>CLENDALE, CA (714) 456-7894 WWW.ABRARI.COM</small> | MECHANICAL CONSULTING: ARGENTO/GRAHAM <small>911 WEST 7TH STREET, 10TH FLOOR LOS ANGELES, CA 90017 (323) 536-2578 WWW.ARGENTOGRAHAM.COM</small> | GEOTECHNICAL: IGES <small>2702 SOUTH 1030 WEST SUITE 10 SALT LAKE CITY, UT 84120 (801) 270-9400 WWW.IGESINC.COM</small> | LANDSCAPE ARCHITECT: LDG <small>328 W 200 S SUITE 102 SALT LAKE CITY, UT 84101 (801) 583-1255</small> | LIGHTING DESIGNER: KGM <small>328 W 200 S SUITE 102 SALT LAKE CITY, UT 84101 (801) 583-1255 WWW.KGMLIGHTING.COM</small> |
|--|--|---|--|--|---|---|---|---|



EXP:03-31-2021

PENTHOUSE LEVEL

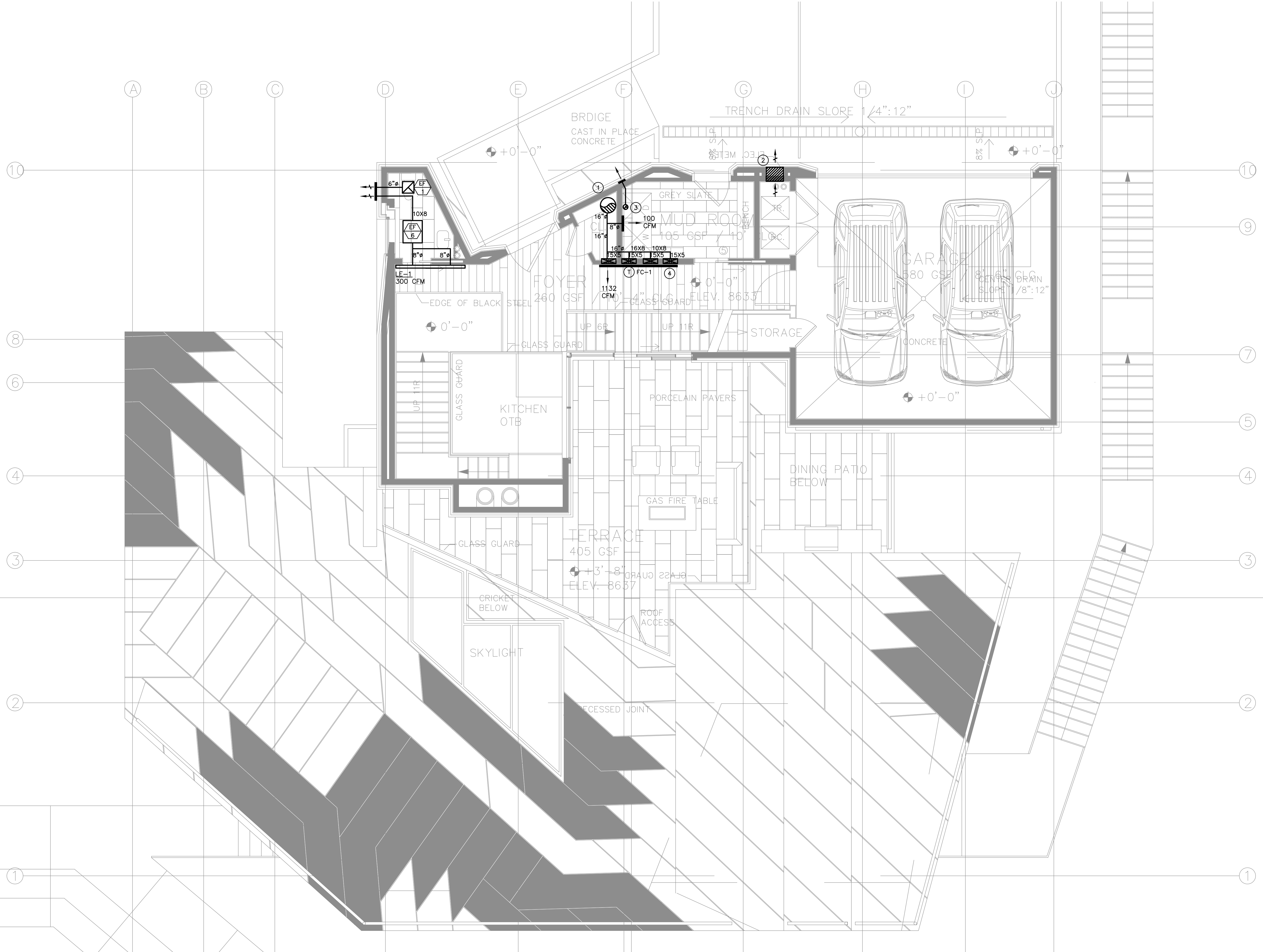
| | | | |
|------------|-----|-------|---------------------|
| REVISIONS: | BY: | DATE: | DATE: |
| | | | 05/05/2018 |
| | | | SCALE: 1/4" = 1'-0" |
| | | | DRAWN: K.S. |
| | | | SHEET: M2.0 |

NOTES:

- 1- AIR INLETS THAT ARE PART OF THE VENTILATION DESIGN SHALL BE LOCATED A MINIMUM OF 10 FEET FROM KNOWN SOURCES OF CONTAMINATION SUCH AS A STACK VENT AND EXHAUST TERMINATION. THE INTAKE SHALL BE PLACED SO THAT ENTERING AIR IS NOT OBSTRUCTED. FORCED AIR INLETS SHALL BE PROVIDED WITH RODENT/INSECT SCREENS (MESH NOT LARGER THAN 1/2 INCH).
- 2- PROVIDE LINED SUPPLY AIR AND RETURN AIR PLENUM.

NUMBERED NOTES:

- ① 16"Ø SUPPLY DUCT FROM ABOVE.
- ② 18X18 LOUVER.
- ③ 4"Ø DRYER EXHAUST DUCT UP.
- ④ (4) 15X5 SUPPLY DUCTS DOWN. GRILLE TO BE 12" ABOVE FLOOR.



POWDER MOUNTAIN HOUSE

OWNER:
TOM BUTTGENBACH
 8645 EASET COPPER CREST
 EDEN, UT 84310

ARCHITECT:
TOM WISCOMBE
 ARCHITECTURE
 2454 WILSHIRE BLVD., SUITE 48
 LOS ANGELES, CA 90057
 (213) 674-2238
 WWW.TOMWISCOMBE.COM

STRUCTURAL ENGINEER:
NOUS
 527 W 7TH STREET
 LOS ANGELES, CA 90014
 (213) 627-6887
 WWW.NOUSENGINEERING.COM

CIVIL ENGINEER:
TALISMAN
 CIVIL CONSULTANTS
 527 W 7TH STREET
 MURRAY, UT 84107
 (801) 745-1300
 WWW.TALISMANCIVIL.COM

MECHANICAL / PLUMBING:
SHAMIM
 ENGINEERING CONSULTANTS INC
 5520 CORBIN AVE., SUITE 300
 FARMERS, CA 91336
 (818) 788-6778
 WWW.SHAMIMENGINEERING.COM

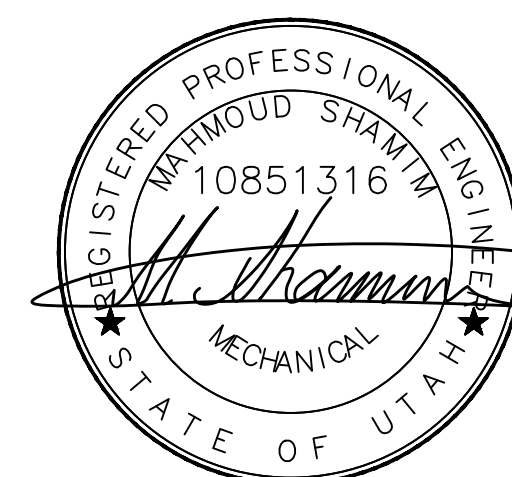
ELECTRICAL:
ABRARI
 ENGINEERING
 (ARMA & ASSOCIATES)
 CLENDALE, CA
 (714) 456-7884
 WWW.ABRARI.COM

NGBS CONSULTING:
 ARGENTO/GRAHAM
 911 WEST 7TH STREET, 10TH FLOOR
 LOS ANGELES, CA 90017
 (323) 536-2678
 WWW.ARGENTOGRAHAM.COM

GEOTECHNICAL:
IGES
 2702 SOUTH 1030 WEST SUITE 10
 SALT LAKE CITY, UT 84120
 (801) 270-9400
 WWW.IGESINC.COM

LANDSCAPE ARCHITECT:
LDG
 328 W 200 S SUITE 102
 SALT LAKE CITY, UT 84101
 (801) 583-1255

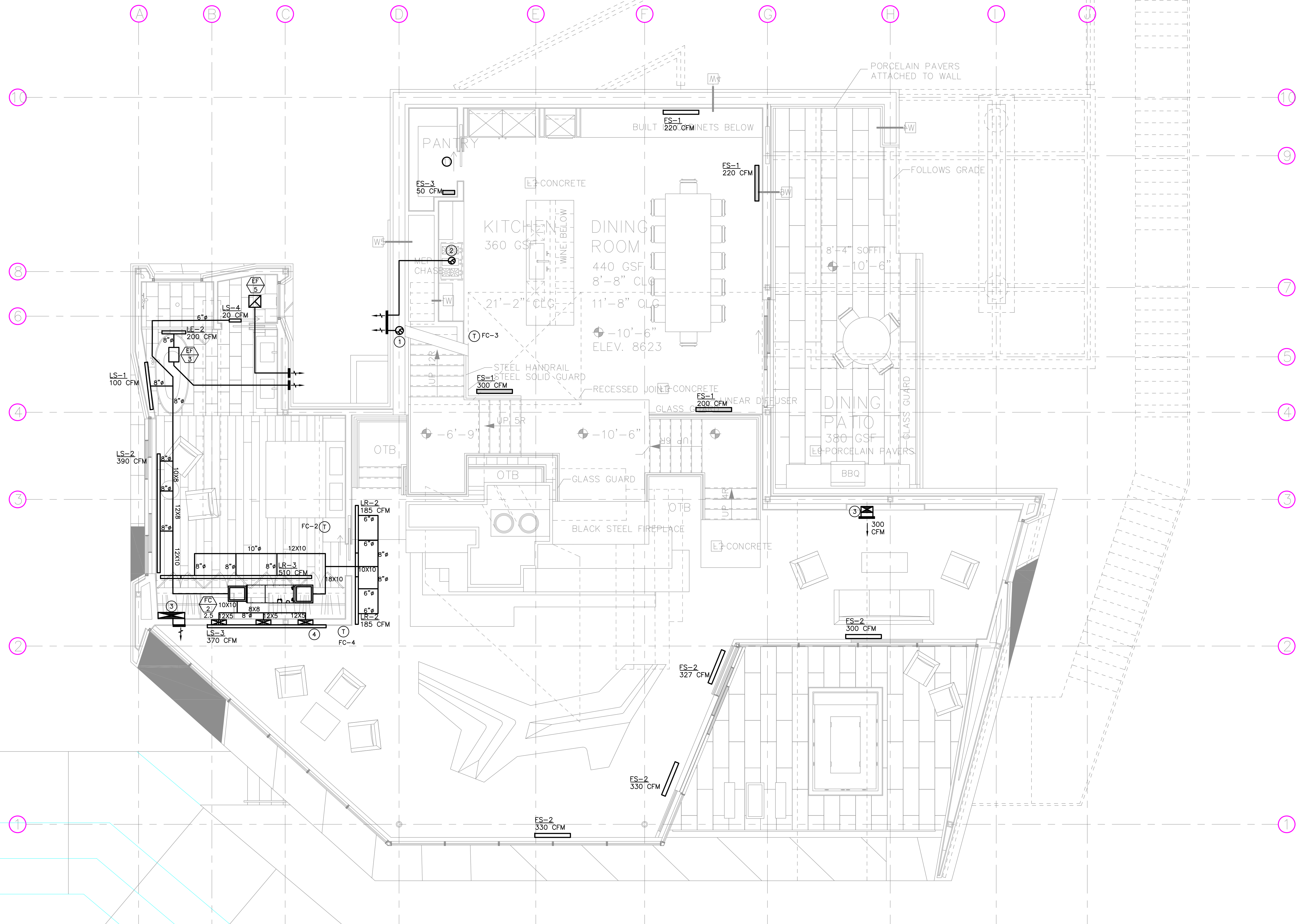
LIGHTING DESIGNER:
KGM
 328 W 200 S SUITE 102
 SALT LAKE CITY, UT 84101
 (801) 583-1255
 WWW.KGMLIGHTING.COM



EXP:03-31-2021

ENTRY LEVEL

| REVISIONS: | BY: | DATE: | DATE: |
|------------|-----|-------|---------------------|
| | | | 05/05/2018 |
| | | | SCALE: 1/4" = 1'-0" |
| | | | DRAWN: K.S. |
| | | | SHEET: M2.1 |



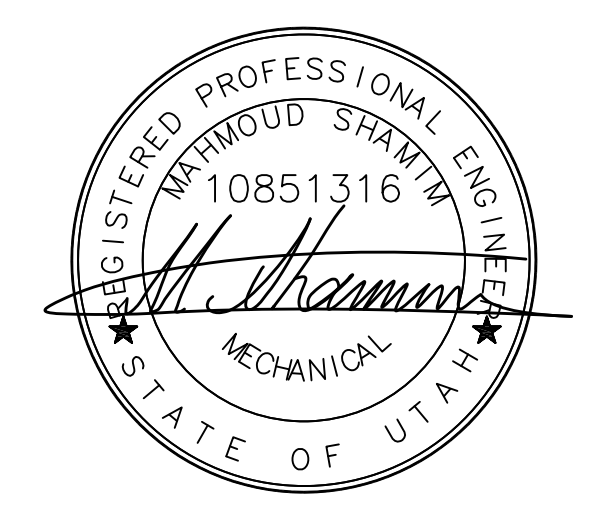
- NOTES:**
- AIR INLETS THAT ARE PART OF THE VENTILATION DESIGN SHALL BE LOCATED A MINIMUM OF 10 FEET FROM KNOWN SOURCES OF CONTAMINATION SUCH AS A STACK VENT AND EXHAUST TERMINATION. THE INTAKE SHALL BE PLACED SO THAT ENTERING AIR IS NOT OBSTRUCTED. FORCED AIR INLETS SHALL BE PROVIDED WITH RODENT/INSECT SCREENS (MESH NOT LARGER THAN 1/2 INCH).
 - PROVIDE LINED SUPPLY AIR AND RETURN AIR PLENUM.
 - DRYER EXHAUSTS SHALL TERMINATE AT LEAST 3 FEET FROM PROPERTY LINE AND THREE FEET FROM OPENINGS INTO ANY BUILDING.
 - NO LOUVERS ALLOWED ON DRYER DISCHARGE.
 - CONCENTRIC WATER HEATER COMBUSTION INTAKE AND EXHAUST FLUE TO EXTERIOR WALL. VERIFY EXACT SIZE WITH MANUFACTURER.

- NUMBERED NOTES:**
- 8" EXHAUST DUCT FROM BELOW TO TERMINATE WITH WEATHERCAP.
 - 7" (OR 3-1/4"x10") KITCHEN HOOD EXHAUST DUCT UTR WITH ROOF CAP OR TO SIDE WALL WITH WALL CAP. VERIFY DUCT SIZES PER MANUFACTURER'S REQUIREMENTS.
 - 12X6 DUCT FROM BELOW TO TERMINATE UNDER SHELVING WITH TOE KICK.
 - (3) 14X5 SUPPLY DUCTS DOWN. GRILLE TO BE 12" ABOVE FLOOR.

POWDER MOUNTAIN HOUSE

OWNER:
TOM BUTTGENBACH
8645 EASET COPPER CREST
EDEN, UT 84310

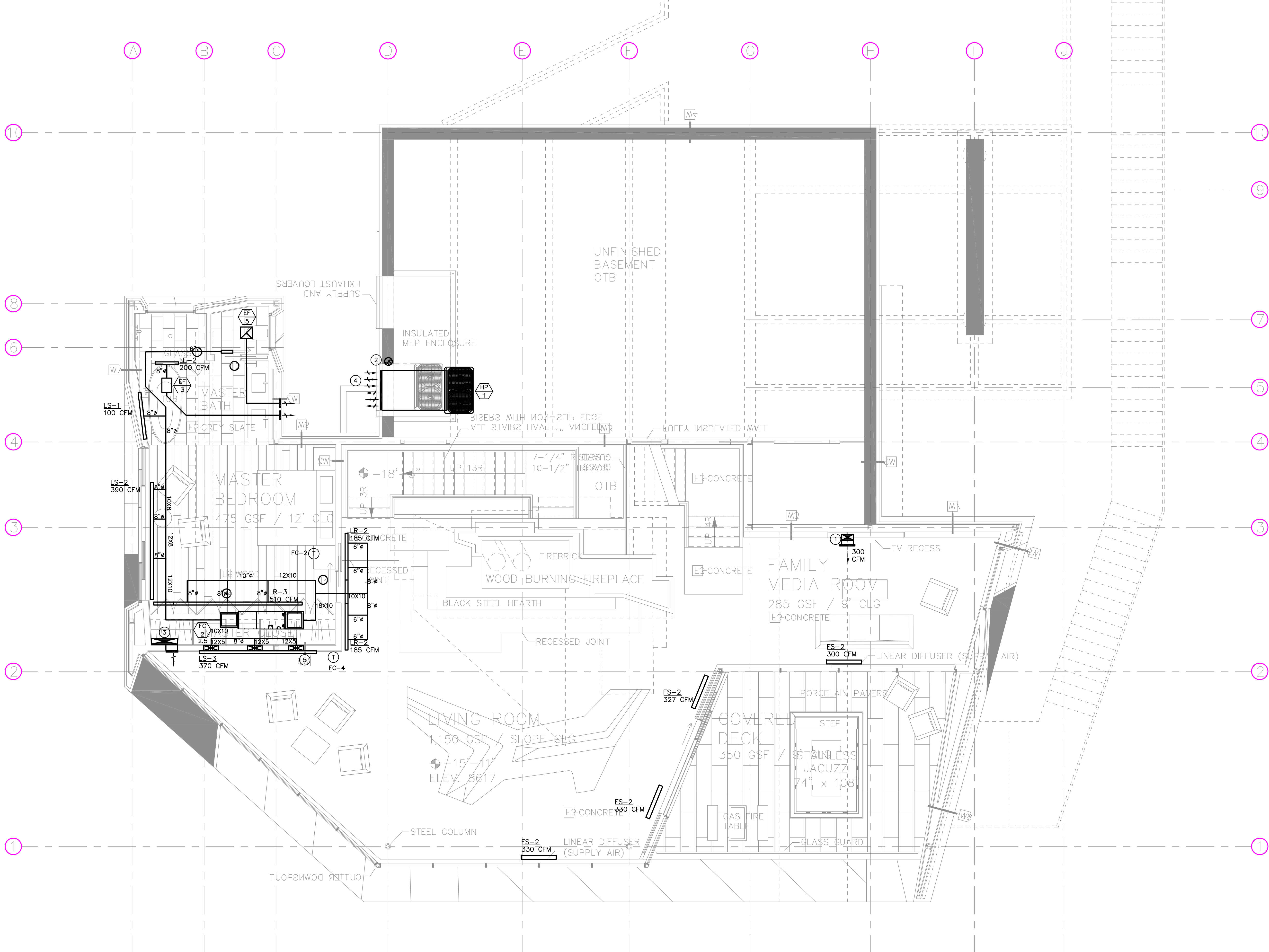
| | | | | | | | | |
|--|--|---|--|--|---|---|---|--|
| ARCHITECT: TOM WISCOMBE ARCHITECTURE <small>2414 WILSHIRE BLVD., SUITE 48 LOS ANGELES, CA 90067 (213) 674-2238 WWW.TOMWISCOMBE.COM</small> | STRUCTURAL ENGINEER: NOUS <small>527 W 7TH STREET LOS ANGELES, CA 90014 (213) 627-6927 WWW.NOUSENGINEERING.COM</small> | CIVIL ENGINEER: TALISMAN <small>527 W 7TH STREET HURON, UT 84017 (801) 743-1303 WWW.TALISMANCIVIL.COM</small> | MECHANICAL / PLUMBING: SHAMIM <small>5530 CORBIN AVE., SUITE 300 IRVINE, CA 92618 (949) 788-6778 WWW.SHAMIMENGINEERING.COM</small> | ELECTRICAL: ABRARI ENGINEERING <small>OLENDALE, CA (714) 458-7894 WWW.ABRARI.COM</small> | NGBS CONSULTING: ARGENTO/GRAHAM <small>911 WEST 7TH STREET, 10TH FLOOR LOS ANGELES, CA 90017 (323) 535-2578 WWW.ARGENTOGRAHAM.COM</small> | GEOTECHNICAL: IGES <small>2702 SOUTH 1030 WEST SUITE 10 SALT LAKE CITY, UT 84120 (801) 270-9400 WWW.IGESINC.COM</small> | LANDSCAPE ARCHITECT: LDG <small>328 W 200 S SUITE 102 SALT LAKE CITY, UT 84101 (801) 583-1255</small> | LIGHTING DESIGNER: KGM <small>3529 W 200 S SUITE 102 SALT LAKE CITY, UT 84101 (801) 583-1255 WWW.KGMLIGHTING.COM</small> |
|--|--|---|--|--|---|---|---|--|



EXP-03-31-2021

MEZZANINE LEVEL

| | | | |
|------------|-----|-------|---------------------|
| REVISIONS: | BY: | DATE: | DATE: |
| | | | 05/05/2018 |
| | | | SCALE: 1/4" = 1'-0" |
| | | | DRAWN: K.S. |
| | | | SHEET: M2.2 |



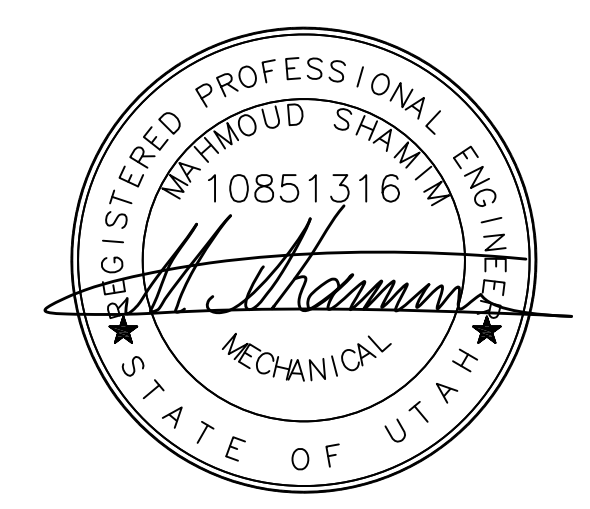
- NOTES:**
- AIR INLETS THAT ARE PART OF THE VENTILATION DESIGN SHALL BE LOCATED A MINIMUM OF 10 FEET FROM KNOWN SOURCES OF CONTAMINATION SUCH AS A STACK VENT AND EXHAUST TERMINATION. THE INTAKE SHALL BE PLACED SO THAT ENTERING AIR IS NOT OBSTRUCTED. FORCED AIR INLETS SHALL BE PROVIDED WITH RODENT/INSECT SCREENS (MESH NOT LARGER THAN 1/8 INCH).
 - PROVIDE LINED SUPPLY AIR AND RETURN AIR PLENUM.
 - DRYER EXHAUSTS SHALL TERMINATE AT LEAST 3 FEET FROM PROPERTY LINE AND THREE FEET FROM OPENINGS INTO ANY BUILDING.
 - NO LOUVERS ALLOWED ON DRYER DISCHARGE.
 - CONCENTRIC WATER HEATER COMBUSTION INTAKE AND EXHAUST FLUE TO EXTERIOR WALL. VERIFY EXACT SIZE WITH MANUFACTURER.

- NUMBERED NOTES:**
- 12X6 DUCT FROM BELOW TO TERMINATE UNDER SHELVING WITH TOE KICK.
 - 8" EXHAUST DUCT FROM BELOW TO TERMINATE WITH WEATHERCAP.
 - 2 SQ. FT. FREE AREA LOUVERED FOR OUTSIDE AIR.
 - 46 SQ. FT. LOUVER FOR CONDENSER UNIT EXHAUST AND FRESH AIR. VERIFY EXACT REQUIREMENTS WITH MANUFACTURER.
 - (3) 14X5 SUPPLY DUCTS DOWN. GRILLE TO BE 12" ABOVE FLOOR.

POWDER MOUNTAIN HOUSE

OWNER:
TOM BUTTGENBACH
 8645 EASET COPPER CREST
 EDEN, UT 84310

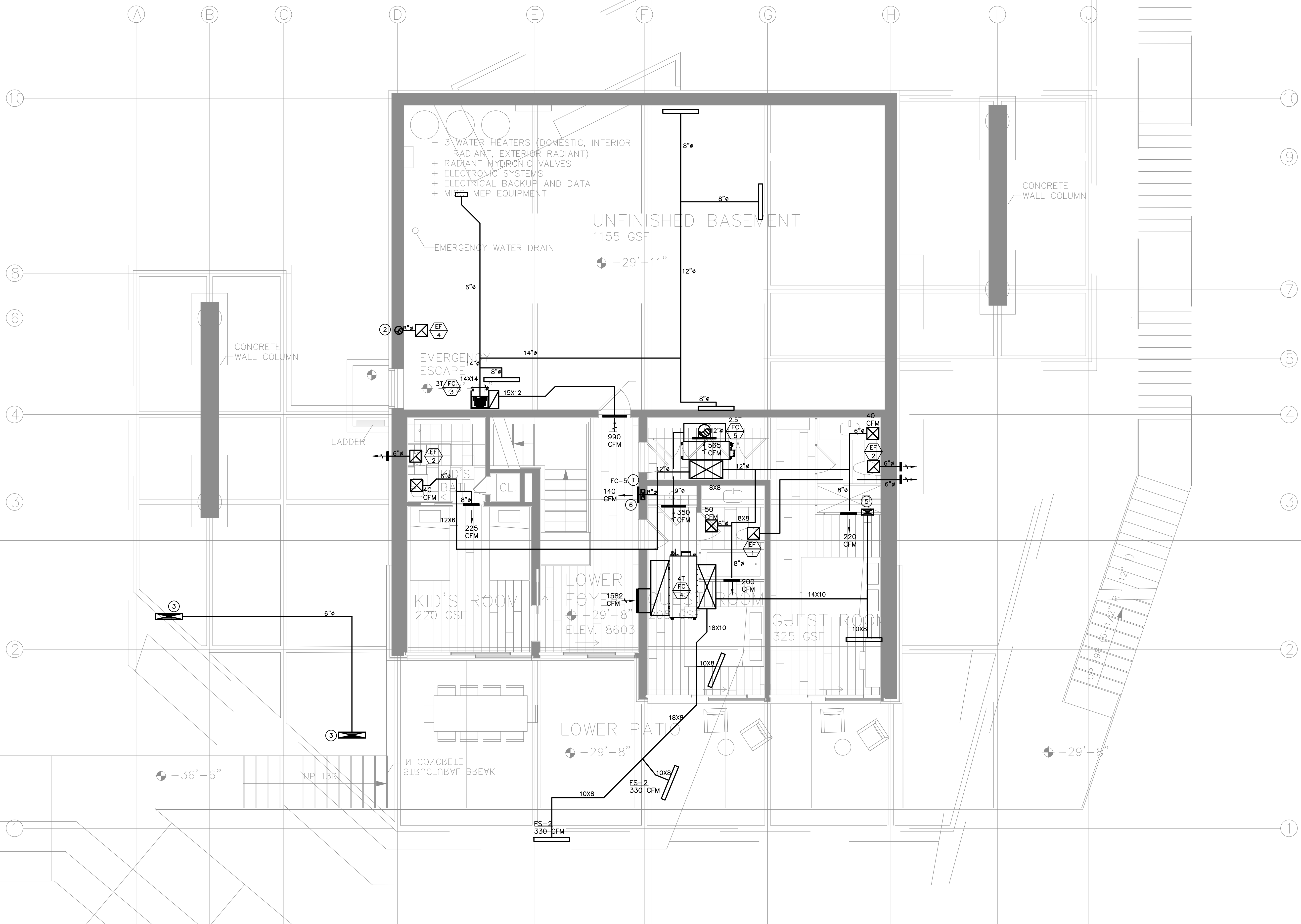
| | | | | | | | | |
|---|--|---|---|--|--|--|---|--|
| ARCHITECT: TOM WISCOMBE ARCHITECTURE <small>2414 WILSHIRE BLVD., SUITE 40 LOS ANGELES, CA 90057 (213) 674-2238 WWW.TOMWISCOMBE.COM</small> | STRUCTURAL ENGINEER: NOUS <small>5217 SOUTH STATE STREET HURON, UT 84017 (215) 627-6927 WWW.NOUSENGINEERING.COM</small> | CIVIL ENGINEER: TALISMAN <small>5217 SOUTH STATE STREET HURON, UT 84017 (215) 627-6927 WWW.TALISMANCIVIL.COM</small> | MECHANICAL / PLUMBING: SHAMIM <small>5530 CORBIN AVE., SUITE 300 IRVINE, CA 92618 (949) 788-6778 WWW.SHAMIMENGINEERING.COM</small> | ELECTRICAL: ABRARI ENGINEERING <small>OLENDALE, CA (714) 458-7894 WWW.ABRARI.COM</small> | NGBS CONSULTING: ARGENTO/GRAHAM <small>911 WEST 7TH STREET, 10TH FLOOR LOS ANGELES, CA 90017 (323) 535-2578 WWW.ARGENTOGRAHAM.COM</small> | GEOTECHNICAL: IGES <small>2702 SOUTH 1030 WEST SUITE 10 SALT LAKE CITY, UT 84120 (801) 270-9400 WWW.IGESINC.COM</small> | LANDSCAPE ARCHITECT: LDG <small>328 W 200 S SUITE 102 SALT LAKE CITY, UT 84101 (801) 583-1295</small> | LIGHTING DESIGNER: KGM <small>328 W 200 S SUITE 102 SALT LAKE CITY, UT 84101 (801) 583-1295 WWW.KGMLIGHTING.COM</small> |
|---|--|---|---|--|--|--|---|--|



EXP-03-31-2021

LIVING ROOM LEVEL

| | | | |
|------------|-----|-------|---------------------|
| REVISIONS: | BY: | DATE: | DATE: |
| | | | 05/05/2018 |
| | | | SCALE: 1/4" = 1'-0" |
| | | | DRAWN: K.S. |
| | | | SHEET: M2.3 |



NOTES:

- 1- AIR INLETS THAT ARE PART OF THE VENTILATION DESIGN SHALL BE LOCATED A MINIMUM OF 10 FEET FROM KNOWN SOURCES OF CONTAMINATION SUCH AS A STACK VENT AND EXHAUST TERMINATION. THE INTAKE SHALL BE PLACED SO THAT ENTERING AIR IS NOT OBSTRUCTED. FORCED AIR INLETS SHALL BE PROVIDED WITH RODENT/INSECT SCREENS (MESH NOT LARGER THAN 1/8 INCH).
- 2- PROVIDE LINED SUPPLY AIR AND RETURN AIR PLENUM.
- 3- DRYER EXHAUSTS SHALL TERMINATE AT LEAST 3 FEET FROM PROPERTY LINE AND THREE FEET FROM OPENINGS INTO ANY BUILDING.
- 4- NO LOUVERS ALLOWED ON DRYER DISCHARGE.
- 5- CONCENTRIC WATER HEATER COMBUSTION INTAKE AND EXHAUST FLUE TO EXTERIOR WALL. VERIFY EXACT SIZE WITH MANUFACTURER.

NUMBERED NOTES:

- ① VOID.
- ② 8" EXHAUST DUCT UP.
- ③ 2 SQ. FT. FREE AREA LOUVER FOR OUTSIDE AIR TO BE DUCTED TO THE UNIT AND OUTSIDE AIR CHASE..
- ④ VOID.
- ⑤ 12X6 SUPPLY DUCT UP TO TOE KICK UNDER SHELVING.
- ⑥ (1) 10X4 SUPPLY DUCTS DOWN. GRILLE TO BE 12" ABOVE FLOOR.

POWDER MOUNTAIN HOUSE

OWNER:
TOM BUTTGENBACH
8645 EASET COPPER CREST
EDEN, UT 84310

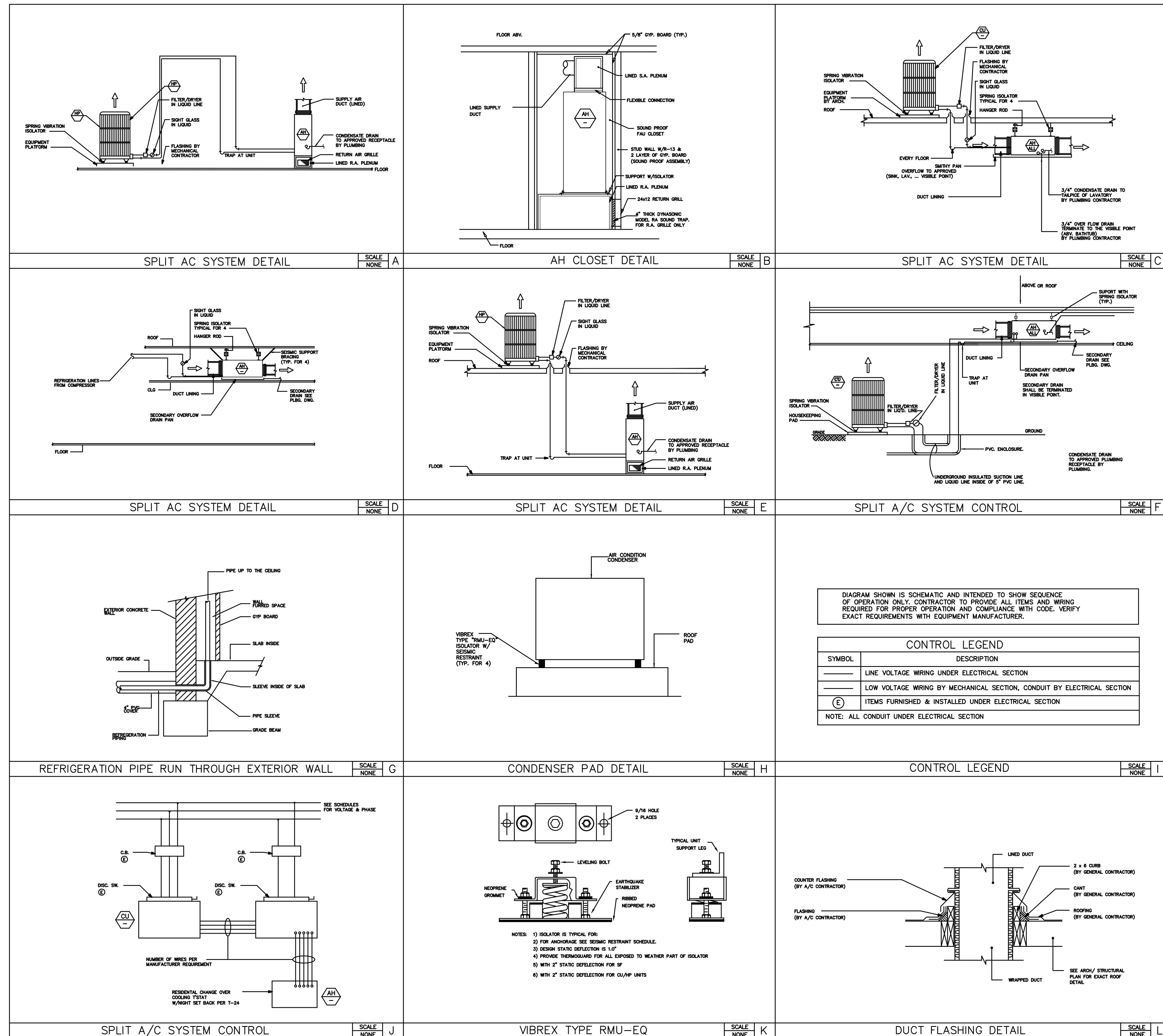
| | | | | | | | | |
|--|--|---|---|--|---|---|---|---|
| ARCHITECT: TOM WISCOMBE ARCHITECTURE <small>2454 WILSHIRE BLVD., SUITE 48 LOS ANGELES, CA 90027 (213) 674-2238 WWW.TOMWISCOMBE.COM</small> | STRUCTURAL ENGINEER: NOUS <small>527 W 7TH STREET LOS ANGELES, CA 90014 (213) 627-6887 WWW.NOUSENGINEERING.COM</small> | CIVIL ENGINEER: TALISMAN <small>5277 SOUTH STATE STREET MURRAY, UT 84107 (801) 745-1300 WWW.TALISMANCIVIL.COM</small> | MECHANICAL / PLUMBING: SHAMIM <small>3520 CORBIN AVE, SUITE 300 IRVINE, CA 92618 (949) 788-6788 WWW.SHAMIMENGINEERING.COM</small> | ELECTRICAL: ABRARI ENGINEERING <small>CLENDALE, CA (714) 456-7894 WWW.ABRARI.COM</small> | NGBS CONSULTING: ARGENTO/GRAHAM <small>811 WEST 7TH STREET, 10TH FLOOR LOS ANGELES, CA 90017 (323) 536-2578 WWW.ARGENTOGRAHAM.COM</small> | GEOTECHNICAL: IGES <small>2702 SOUTH 1030 WEST SUITE 10 SALT LAKE CITY, UT 84120 (801) 270-9400 WWW.IGESINC.COM</small> | LANDSCAPE ARCHITECT: LDG <small>328 W 200 S SUITE 102 SALT LAKE CITY, UT 84101 (801) 583-1255</small> | LIGHTING DESIGNER: KGM <small>328 W 200 S SUITE 102 SALT LAKE CITY, UT 84101 (801) 583-1255 WWW.KGMLIGHTING.COM</small> |
|--|--|---|---|--|---|---|---|---|



EXP:03-31-2021

BASEMENT LEVEL

| | | | |
|------------|-----|-------|---------------------|
| REVISIONS: | BY: | DATE: | DATE: |
| | | | 05/05/2018 |
| | | | SCALE: 1/4" = 1'-0" |
| | | | DRAWN: K.S. |
| | | | SHEET: M2.4 |



POWDER MOUNTAIN HOUSE

OWNER:
TOM BUTTGENBACH
8645 EASET COPPER CREST
EDEN, UT 84310

ARCHITECT:
TOM WISCOMBE ARCHITECTURE

STRUCTURAL ENGINEER:
NOUS

CIVIL ENGINEER:
TALISMAN

MECHANICAL / PLUMBING:
SHAMIM

ELECTRICAL:
ABRARI ENGINEERING

NGBS CONSULTING:
ARGENTO/GRAHAM

GEOTECHNICAL:
IGES

LANDSCAPE ARCHITECT:
LDG

LIGHTING DESIGNER:
KGM

2454 WILSHIRE BLVD., SUITE 48
LOS ANGELES, CA 90057
(213) 674-2238
WWW.TOMWISCOMBE.COM

527 W 7TH STREET
MURRAY, UT 84107
LOS ANGELES, CA 90014
(213) 627-6887
WWW.NOUSENGINEERING.COM

5217 SOUTH STATE STREET
MURRAY, UT 84107
(801) 745-1300
WWW.TALISMANCIVIL.COM

5520 CORBIN AVE, SUITE 300
TRABUCA, CA 91329
(818) 456-7894
WWW.SHAMIMENGINEERING.COM

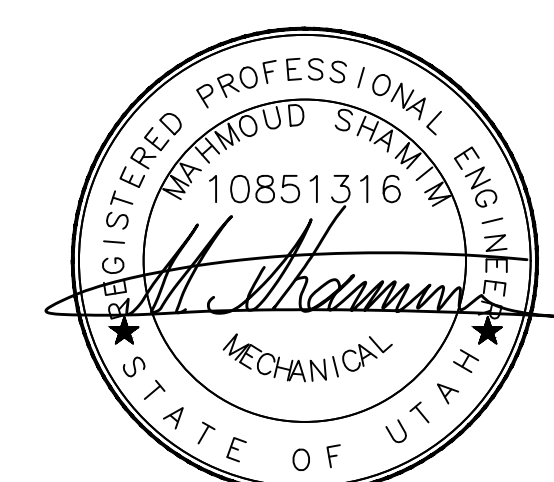
CLENDALE, CA
(415) 456-7894
WWW.ABRARI.COM

911 WEST 7TH STREET, 10TH FLOOR
LOS ANGELES, CA 90017
(323) 536-2578
WWW.ARGENTOGRAHAM.COM

2702 SOUTH 1030 WEST SUITE 10
SALT LAKE CITY, UT 84120
(801) 270-9400
WWW.IGESINC.COM

328 W 200 S SUITE 102
SALT LAKE CITY, UT 84101
(801) 593-1255

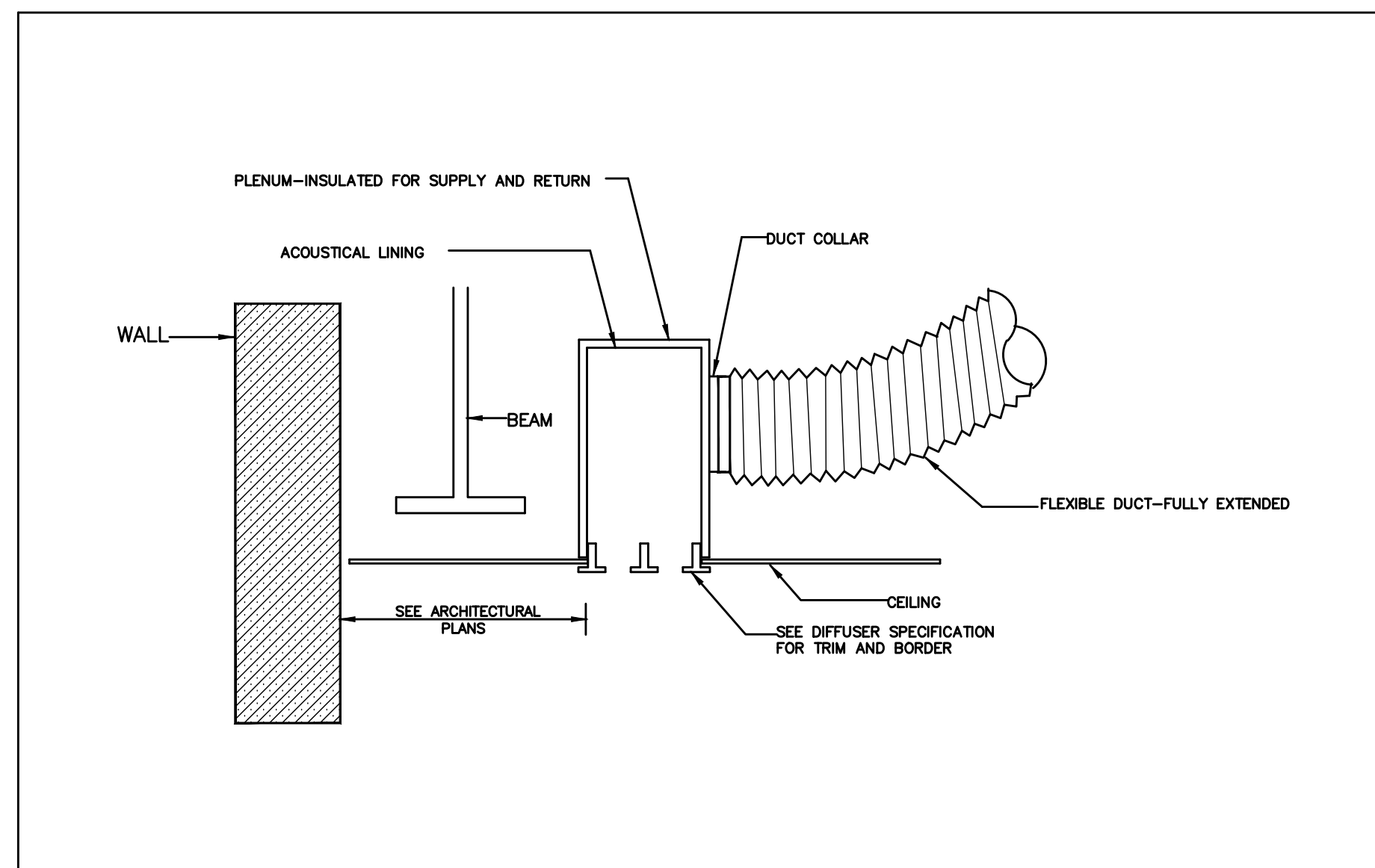
329 W 200 S SUITE 102
SALT LAKE CITY, UT 84101
(801) 593-1255
WWW.KGMLIGHTING.COM



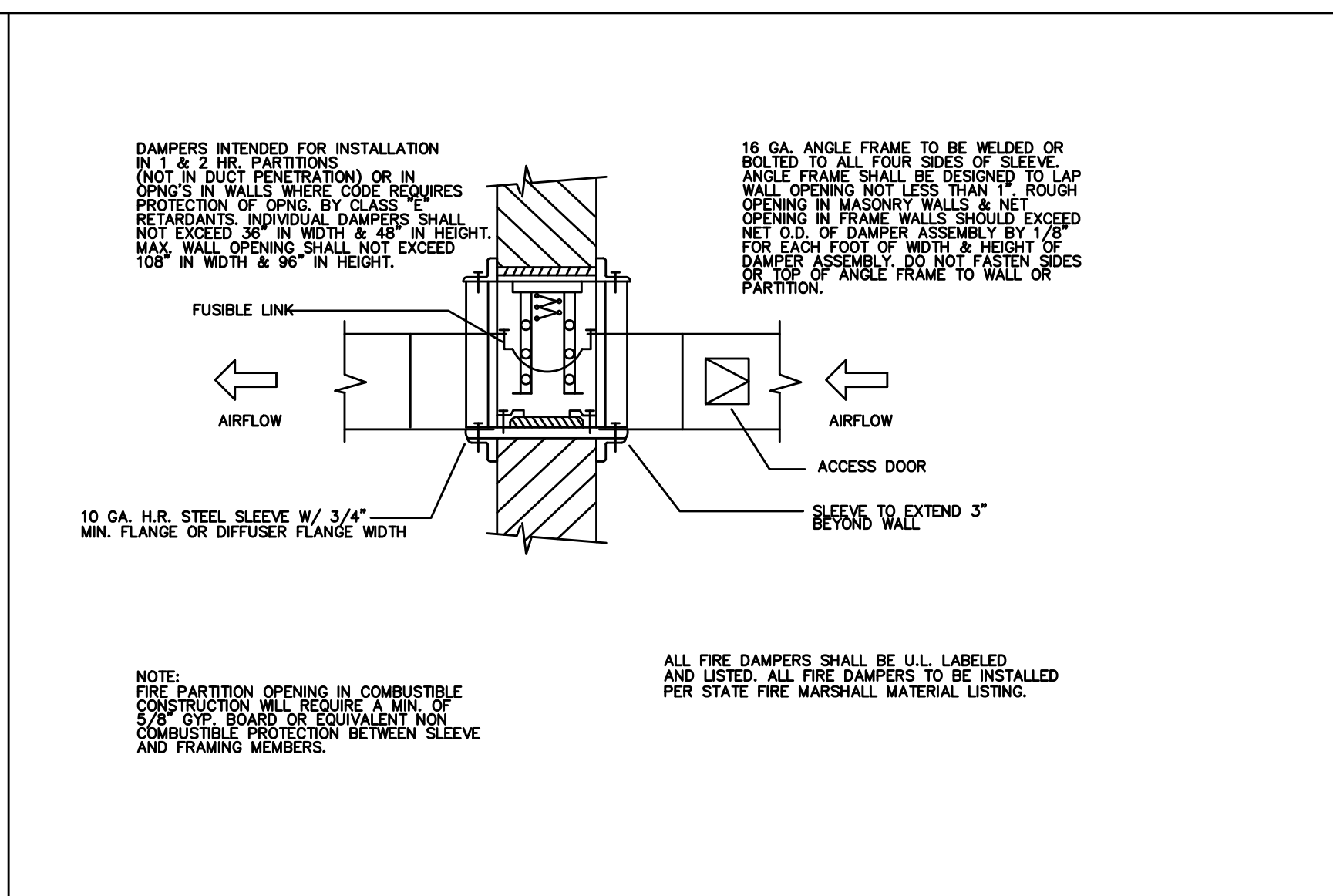
EXP-03-31-2021

DETAIL SHEET

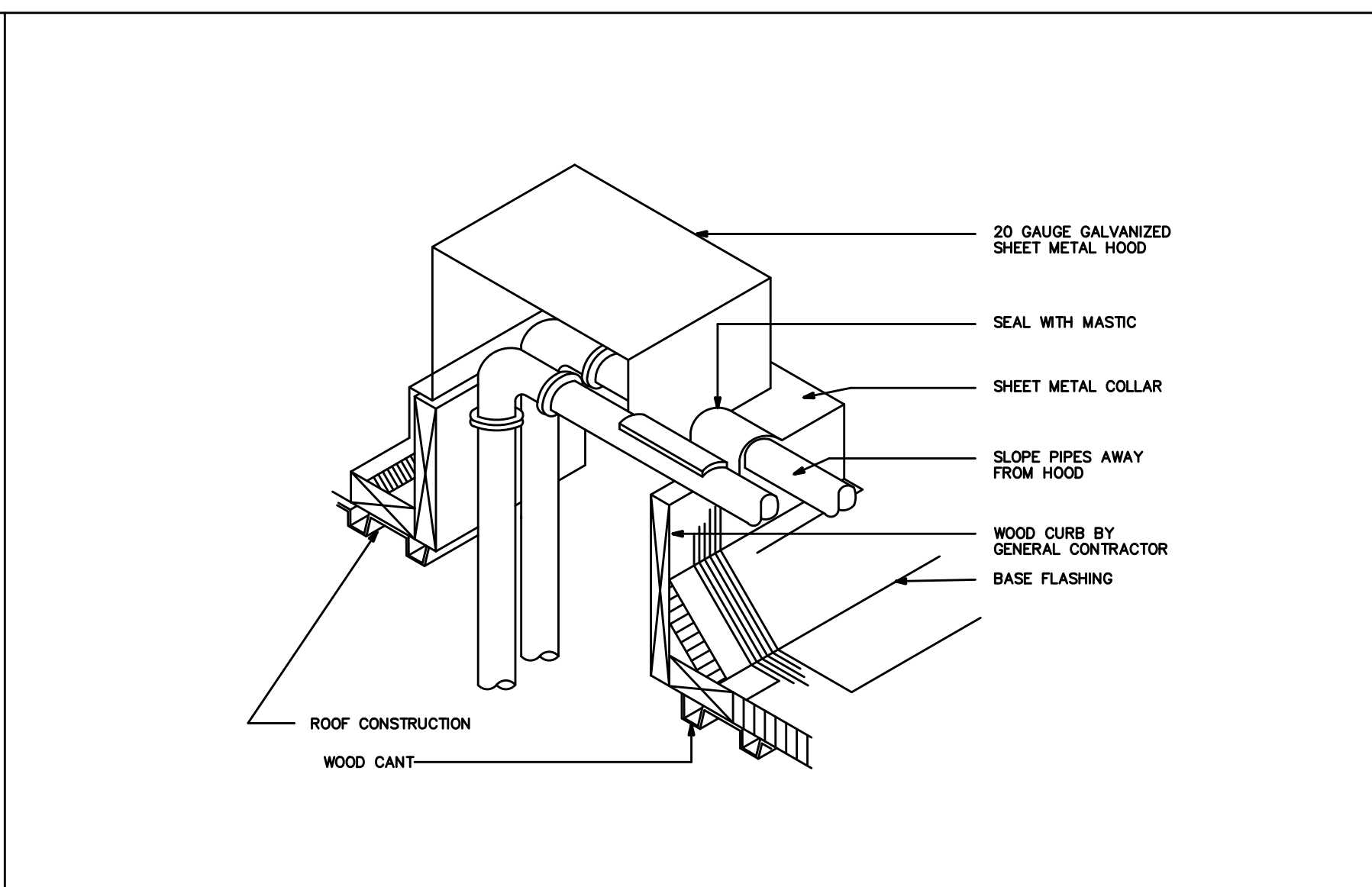
| | | | |
|------------|-----|-------|---------------------|
| REVISIONS: | BY: | DATE: | DATE: |
| | | | 05/05/2018 |
| | | | SCALE: 1/4" = 1'-0" |
| | | | DRAWN: K.S. |
| | | | SHEET: M3.0 |



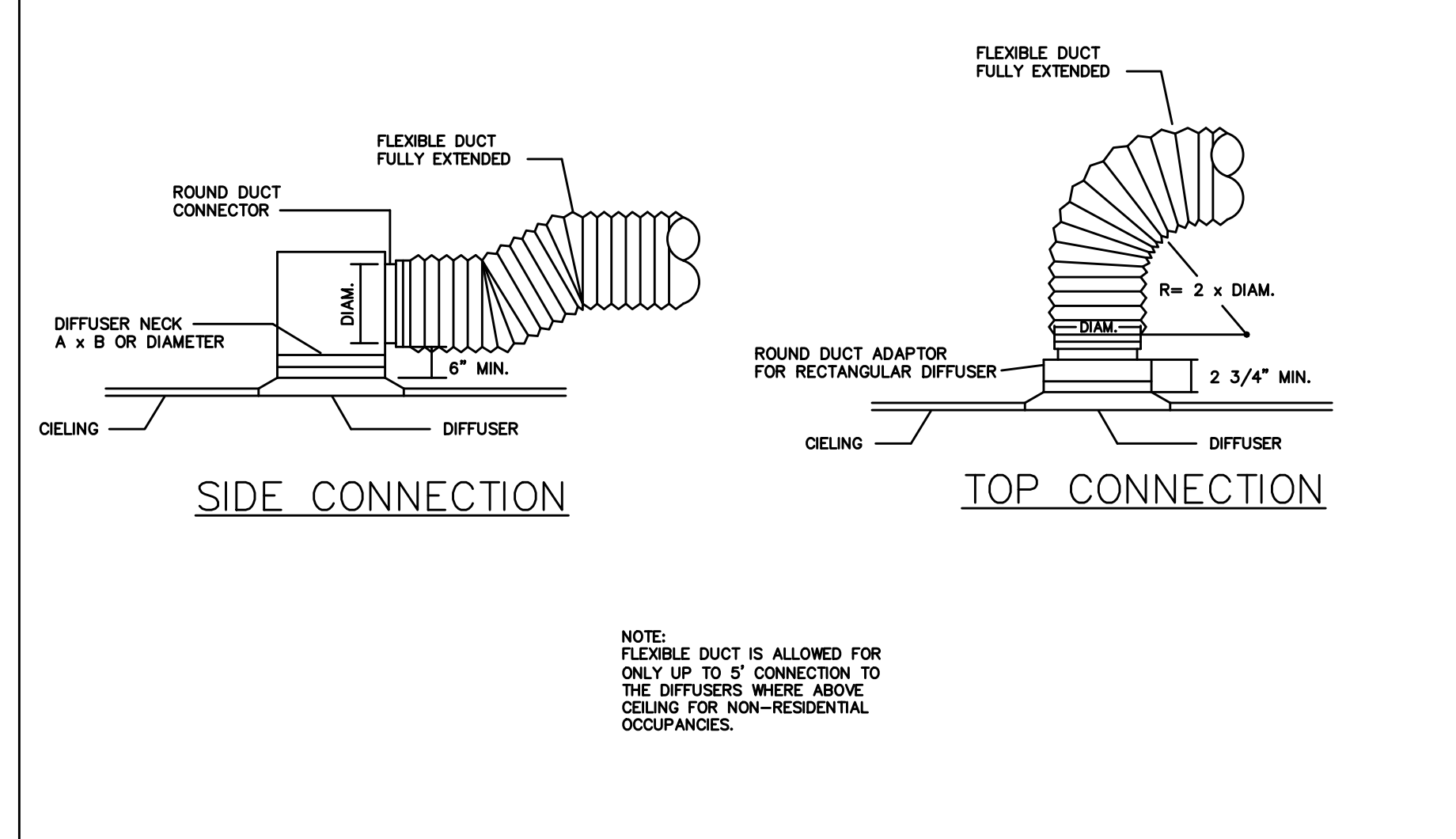
SCHEMATIC LINEAR DIFFUSER CONNECTION DETAIL SCALE NONE A



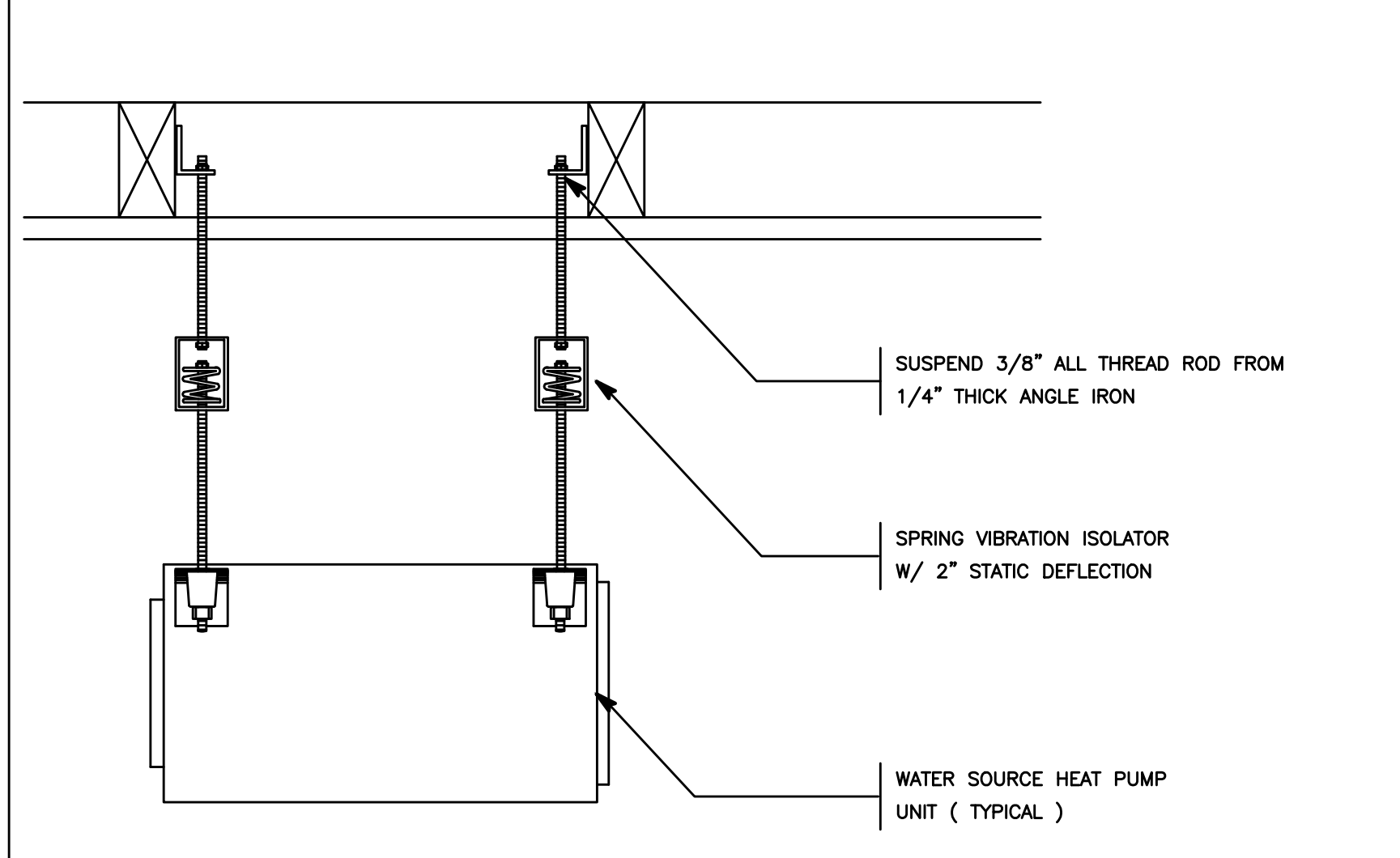
FIRE DAMPER DETAIL SCALE NONE B



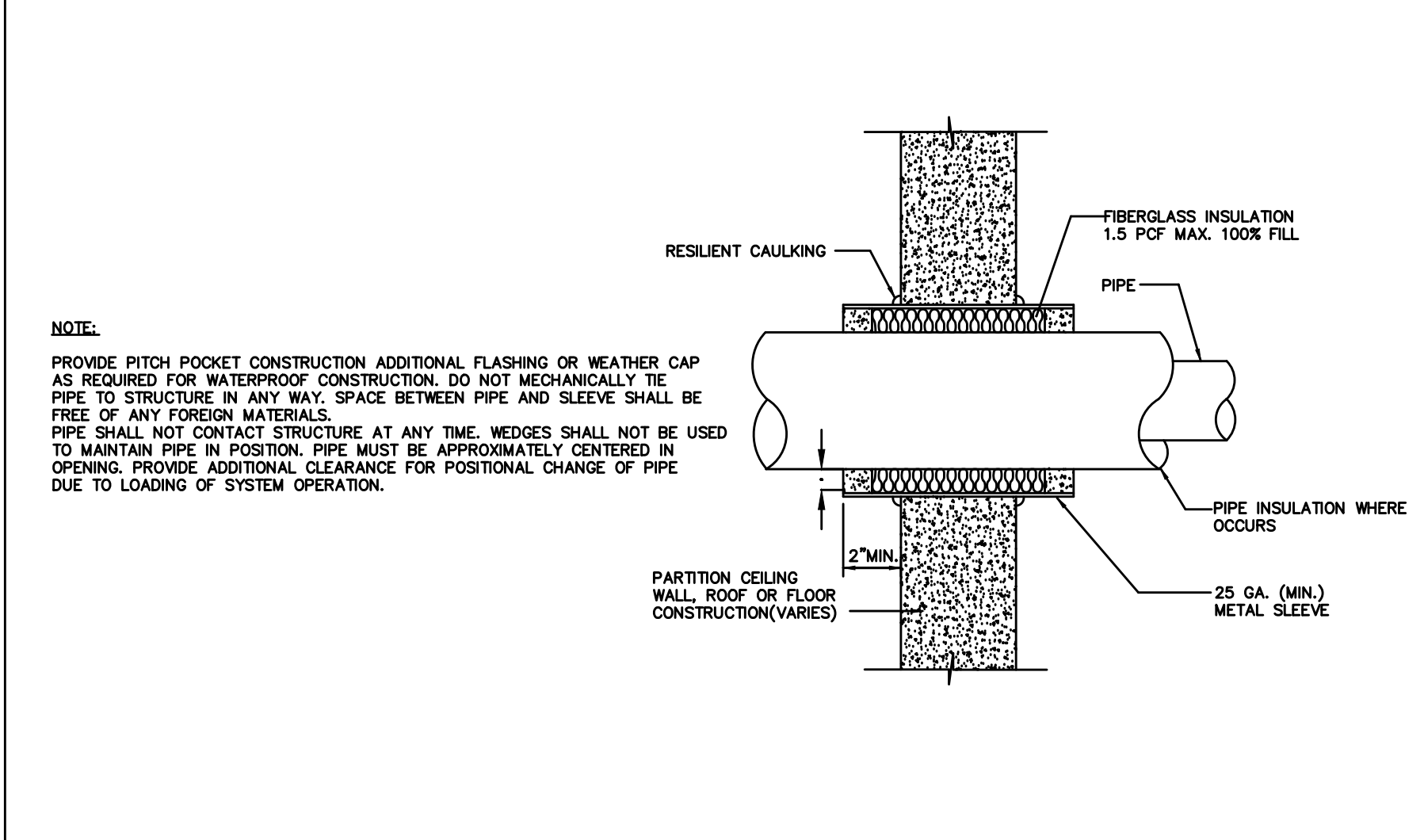
PIPE THRU ROOF DETAIL SCALE NONE C



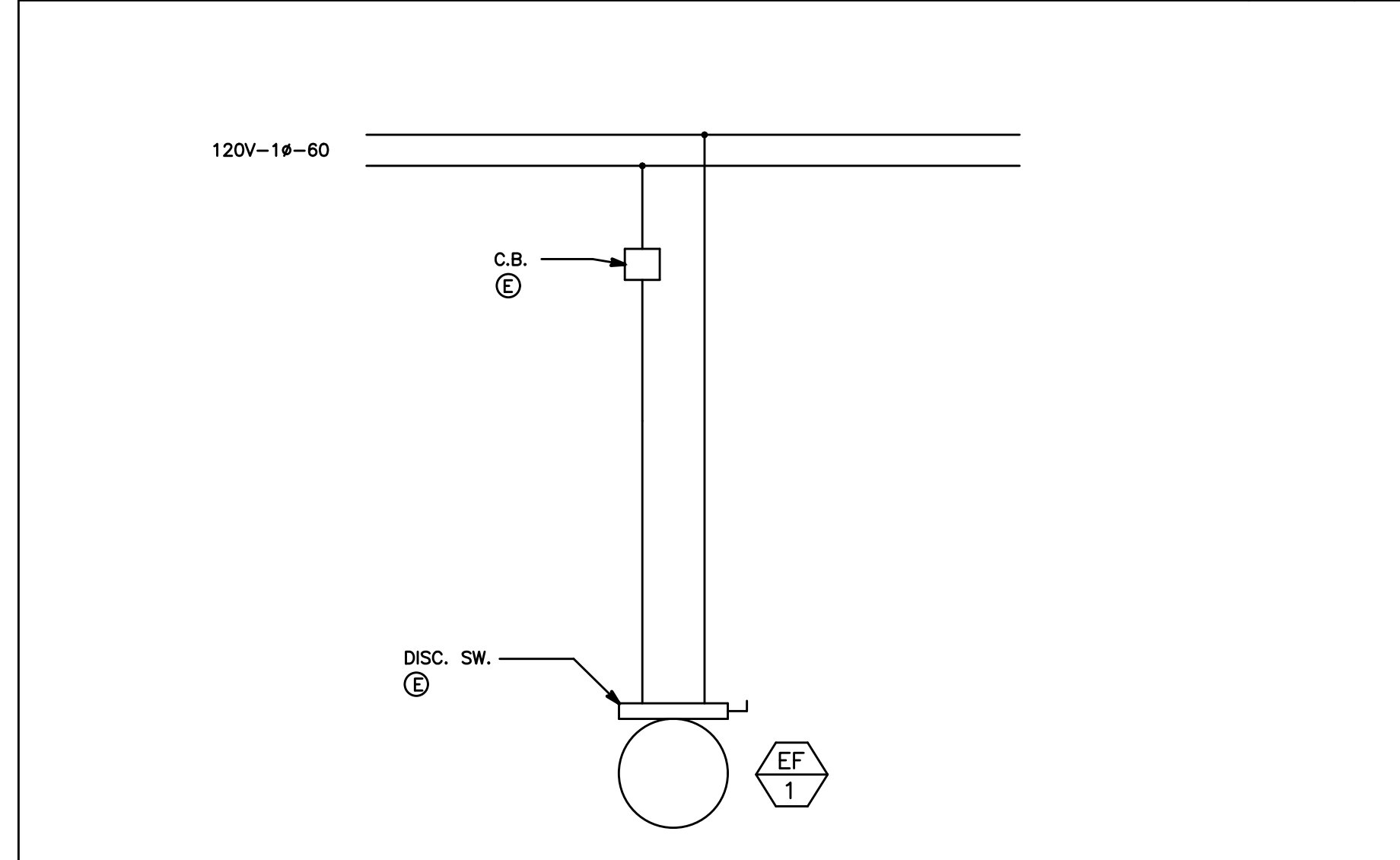
DIFFUSER CONNECTION SCALE NONE D



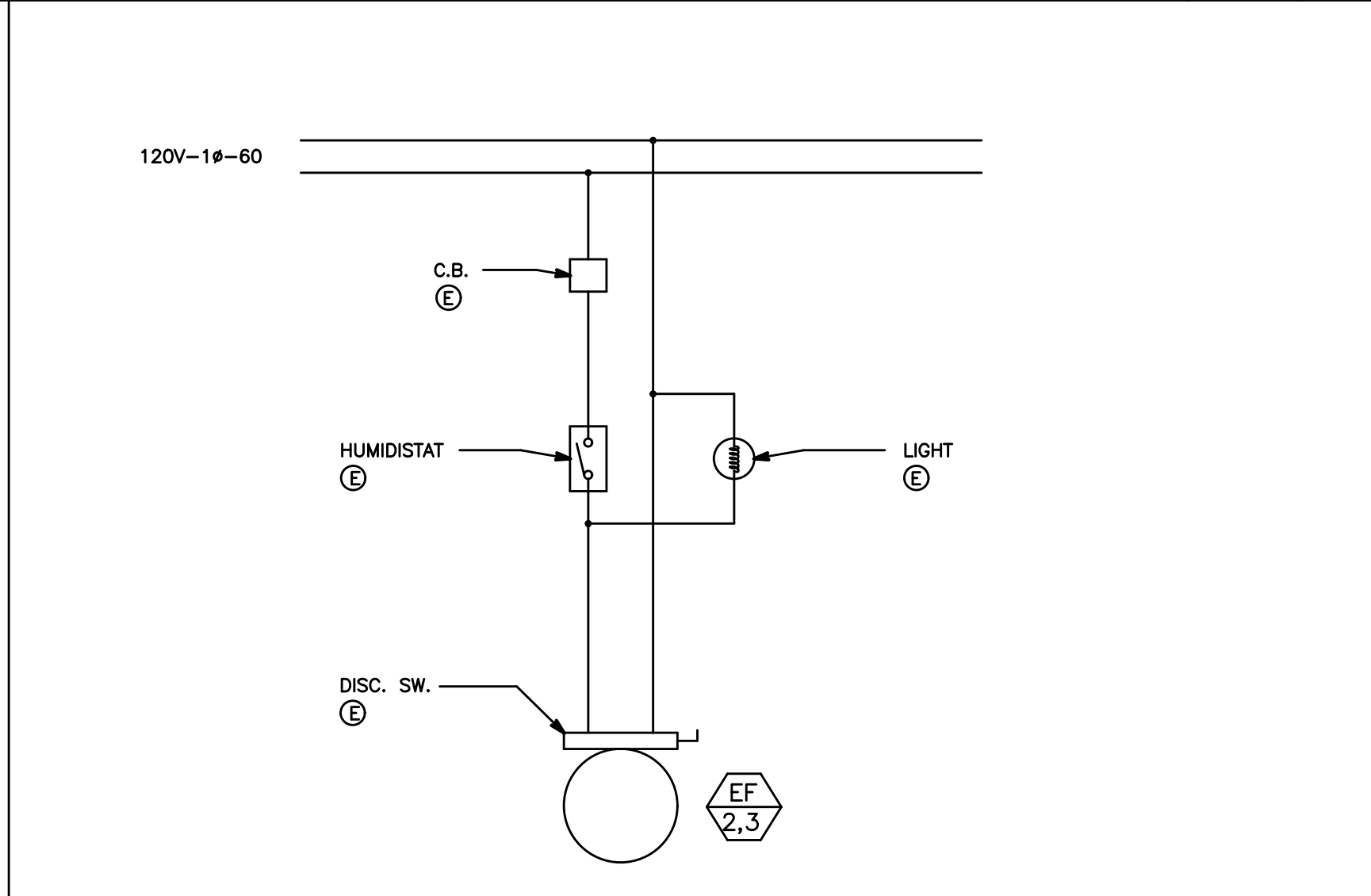
EXHAUST FAN W/ SPRING VIBRATION ISOLATOR SCALE NONE E



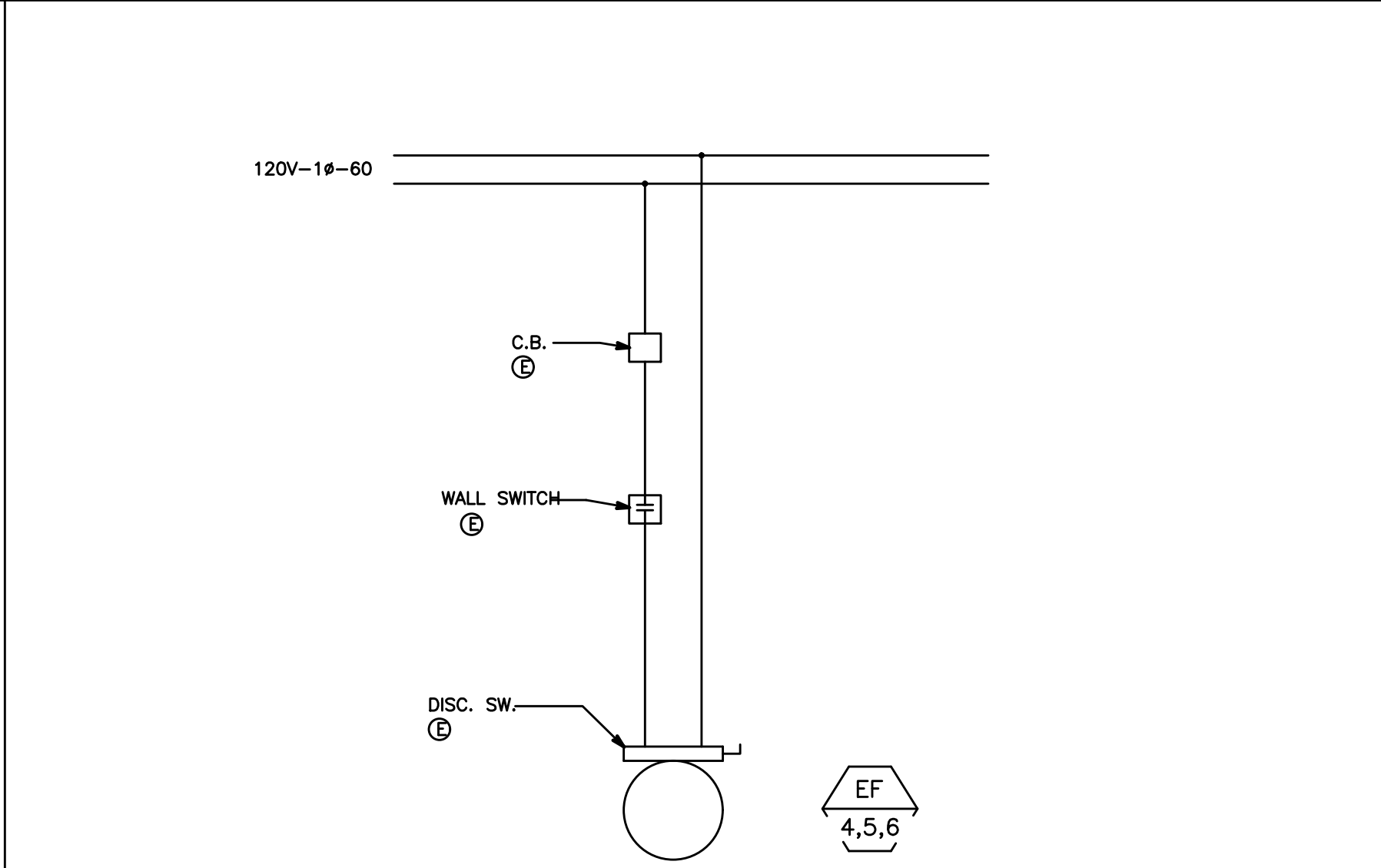
PIPE PENETRATION DETAIL SCALE NONE F



EXHAUST FAN CONTROL DIAGRAM SCALE NONE G



EXHAUST FAN CONTROL DIAGRAM SCALE NONE H



EXHAUST FAN CONTROL DIAGRAM SCALE NONE I

POWDER MOUNTAIN HOUSE

OWNER:
TOM BUTTGENBACH
8645 EASET COPPER CREST
EDEN, UT 84310

| | | | | | | | | |
|--|--|--|---|--|---|---|---|--|
| ARCHITECT: TOM WISCOMBE ARCHITECTURE <small>2454 WILSHIRE BLVD., SUITE 4B LOS ANGELES, CA 90017 (213) 674-2238 WWW.TOMWISCOMBE.COM</small> | STRUCTURAL ENGINEER: NOUS <small>527 W 7TH STREET LOS ANGELES, CA 90014 (213) 627-6887 WWW.NOUSENGINEERING.COM</small> | CIVIL ENGINEER: TALISMAN <small>527 W 7TH STREET MURRAY, UT 84107 (801) 745-1300 WWW.TALISMANCIVIL.COM</small> | MECHANICAL / PLUMBING: SHAMIM ENGINEERING CONSULTANTS INC <small>5520 CORBIN AVE, SUITE 300 IRVINE, CA 92618 (949) 788-6778 WWW.SHAMIMENGINEERING.COM</small> | ELECTRICAL: ABRARI ENGINEERING <small>CLENDALE, CA (714) 456-7894 WWW.ABRARI.COM</small> | NGBS CONSULTING: ARGENTO/GRAHAM <small>911 WEST 7TH STREET, 10TH FLOOR LOS ANGELES, CA 90017 (323) 536-2578 WWW.ARGENTOGRAHAM.COM</small> | GEOTECHNICAL: IGES <small>2702 SOUTH 1030 WEST SUITE 10 SALT LAKE CITY, UT 84120 (801) 270-9400 WWW.IGESINC.COM</small> | LANDSCAPE ARCHITECT: LDG <small>328 W 200 S SUITE 102 SALT LAKE CITY, UT 84101 (801) 583-1255</small> | LIGHTING DESIGNER: KGM <small>3529 W 200 S SUITE 102 SALT LAKE CITY, UT 84101 (801) 583-1255 WWW.KGMLIGHTING.COM</small> |
|--|--|--|---|--|---|---|---|--|



DETAIL SHEET

| | | | |
|------------|-----|-------|---------------------|
| REVISIONS: | BY: | DATE: | DATE: |
| | | | 05/05/2018 |
| | | | SCALE: 1/4" = 1'-0" |
| | | | DRAWN: K.S. |
| | | | SHEET: M3.1 |