



WEBER COUNTY
SURVEYOR'S OFFICE
 2380 Washington Blvd. Rm 370 Ogden,
 Utah 84401 (801) 399-8020

NORTHEAST CORNER
 SECTION 1
 TOWNSHIP 6 NORTH
 RANGE 1 EAST

MON#:6N1E1NE

36	31
1	6

Horizontal Datum: State Plane, Utah North Zone, NAD83 Feet

Northing:
3630649.8

Easting:
1564238.3

Latitude:
41° 17' 35.33" N

Longitude:
111° 46' 37.99" W

Appox. Address:
 7094 E 1900 N Eden, Utah 84310

Correction Source: Collected with GPS on the TURN GPS Network per Weber County and NGS RT1 standards.

Directions: From approximate N of 7094 e 1900 N. Monument is located in middle of road.

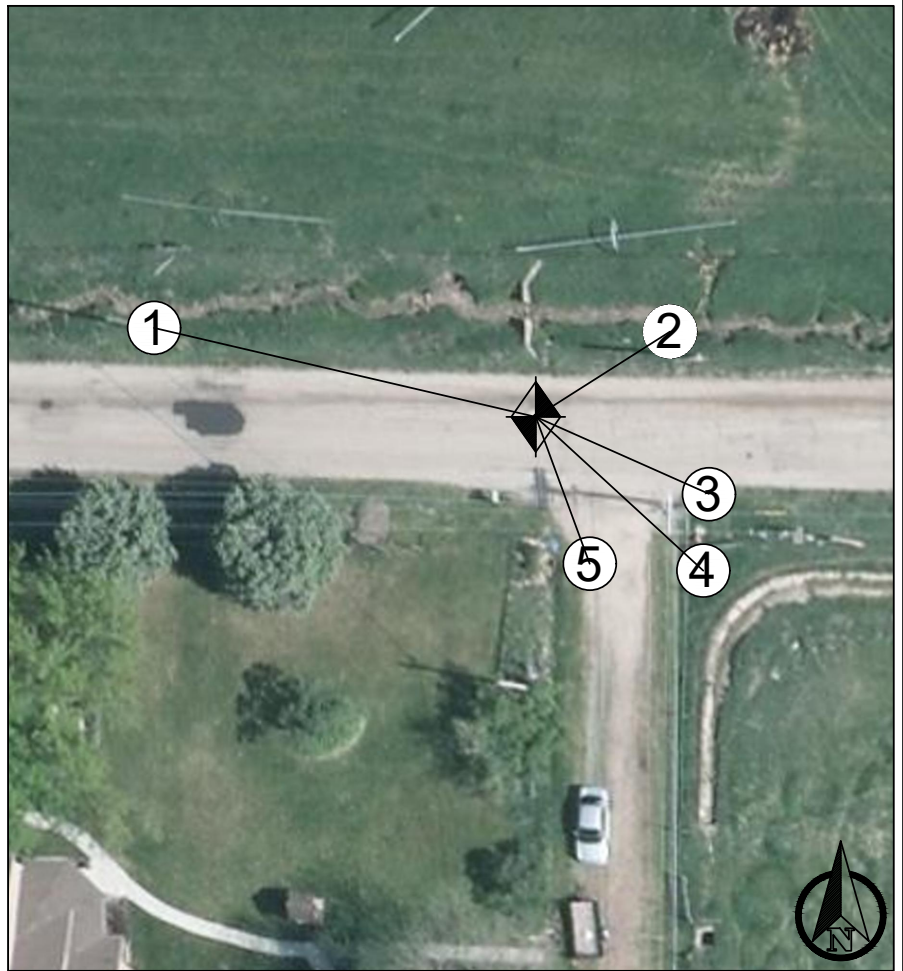
Vertical Datum:

Geoid: 12b

Elevation:
NA

Method: NA
 Ortho Height:
4942.8

Type: Weber County precast
Size: 3" Brass in ring and lid.
Location: 5" below Road.
Condition: Good Condition
Date:



History:

- Visited by SR
- Found original stone replaced with brass cap flush with road.
- Reset inside ring & lid.

Reference Ties:

1. 73.11' N/W S side power pole.
2. 32.55' N/W NW side power pole.
3. 35.33' N/W SW side power pole.
4. 37.95' top bolt on fire hydrant.
5. 24.45' Ref Monument

PDF file made 12/19/2011
7214

Weber County Surveyor's Section Corner Ties

23-51

Monument No.	Elevation	HARN NAD 83 Coordinates		NAD 87 Coordinates		Lat & Long are to help locate monument, and not intended to be used as survey control	
	N=	E=	X=	Y=	Latitude	Longitude	
61201-1351			1924032.3415	349830.7231	41°17'35.33" N	111°46'37.99" W	

Tied by: MJ/CR/JH Date: 07/19/2006
 Drawn By: MJ Date: 06/19/2007

The Distances:

- 1) 73.11' N/W S side pwr pole
- 2) 32.55' N/W NW side pwr pole
- 3) 35.33' N/W SW side pwr pole
- 4) 37.95' Top bolt on Fire Hydrant
- 5) 24.45' Ref Monument

Monument History

Date	Monument History
1994	Found original stone replaced with brass cap flush with road
2003	Reset inside ring & lid

Description of Monument:

Weber County 3" brass cap set inside a ring & lid.





Looking North (2016)



Looking East (2016)

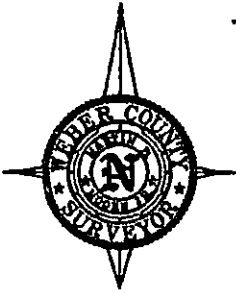


Looking South (2016)



Looking West (2016)

North Quarter 6N1E Section 2

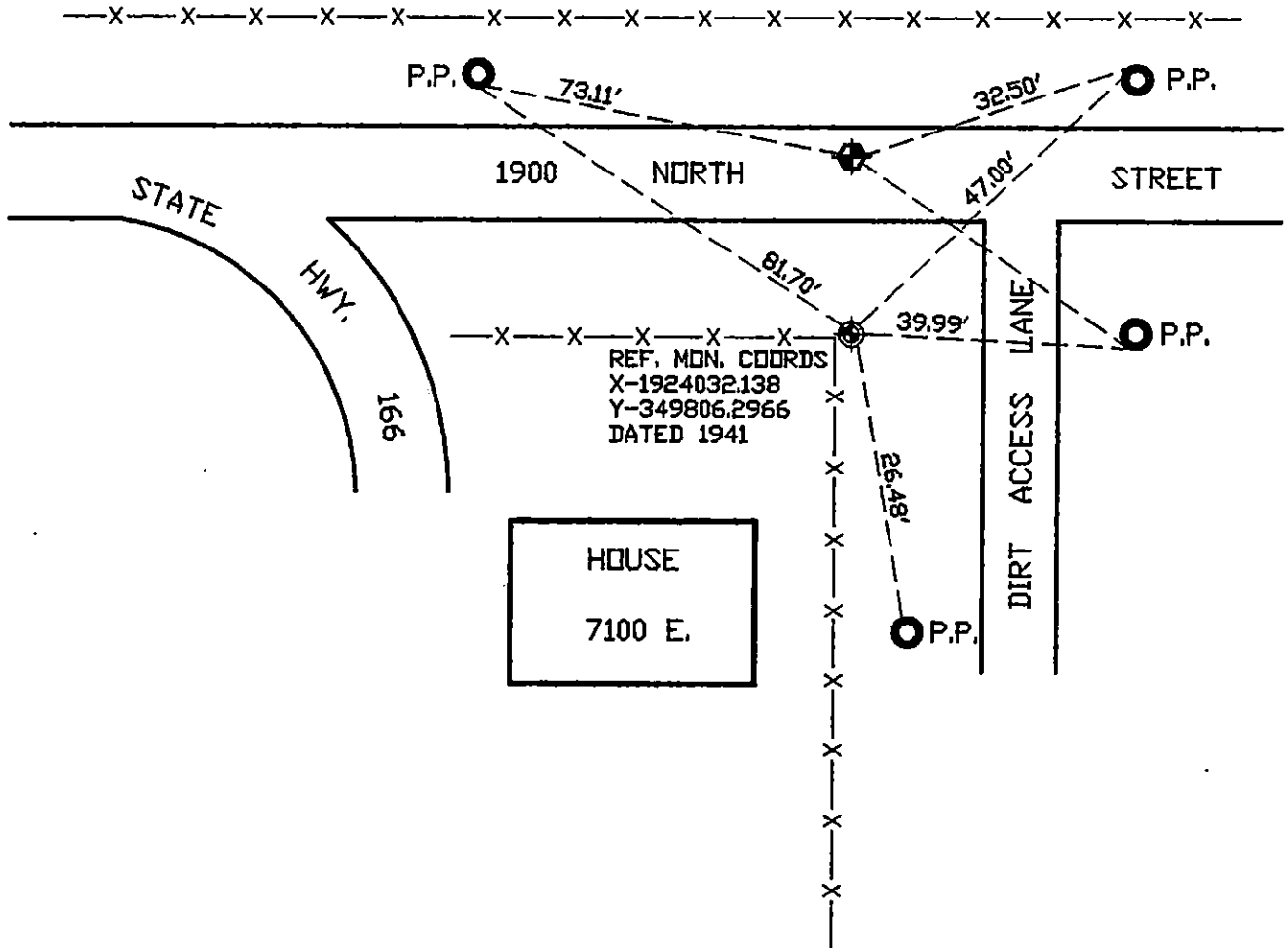


WEBER COUNTY SURVEYOR'S SECTION CORNER TIES

SCALE = N.T.S.

PAGE NO: 29-51

T 7 N	T 7 N
R 1 E	R 2 E
S 36	S 31
S 1	S 6
T 6 N	T 6 N
R 1 E	R 2 E
1994	



DRAFTED BY: B.P. ARAVE
 TIED BY: BA/MJ 09/94
 REVISION DATE: JAN. 8, 1997

NOTE: ALL COORDS SHOWN ARE GRID COORDS UNLESS STATED OTHERWISE

STATE PLANE GRID COORDINATES: NAD 27
 X-1924032.3415
 Y-349830.7231

ELEVATION:

GRID COORDS MT OGDEN TOWER:
 X-1895096.695 Y-315958.771

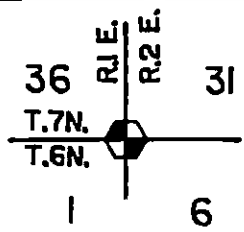
DESCRIPTION OF MONUMENT

WEBER COUNTY MONUMENT

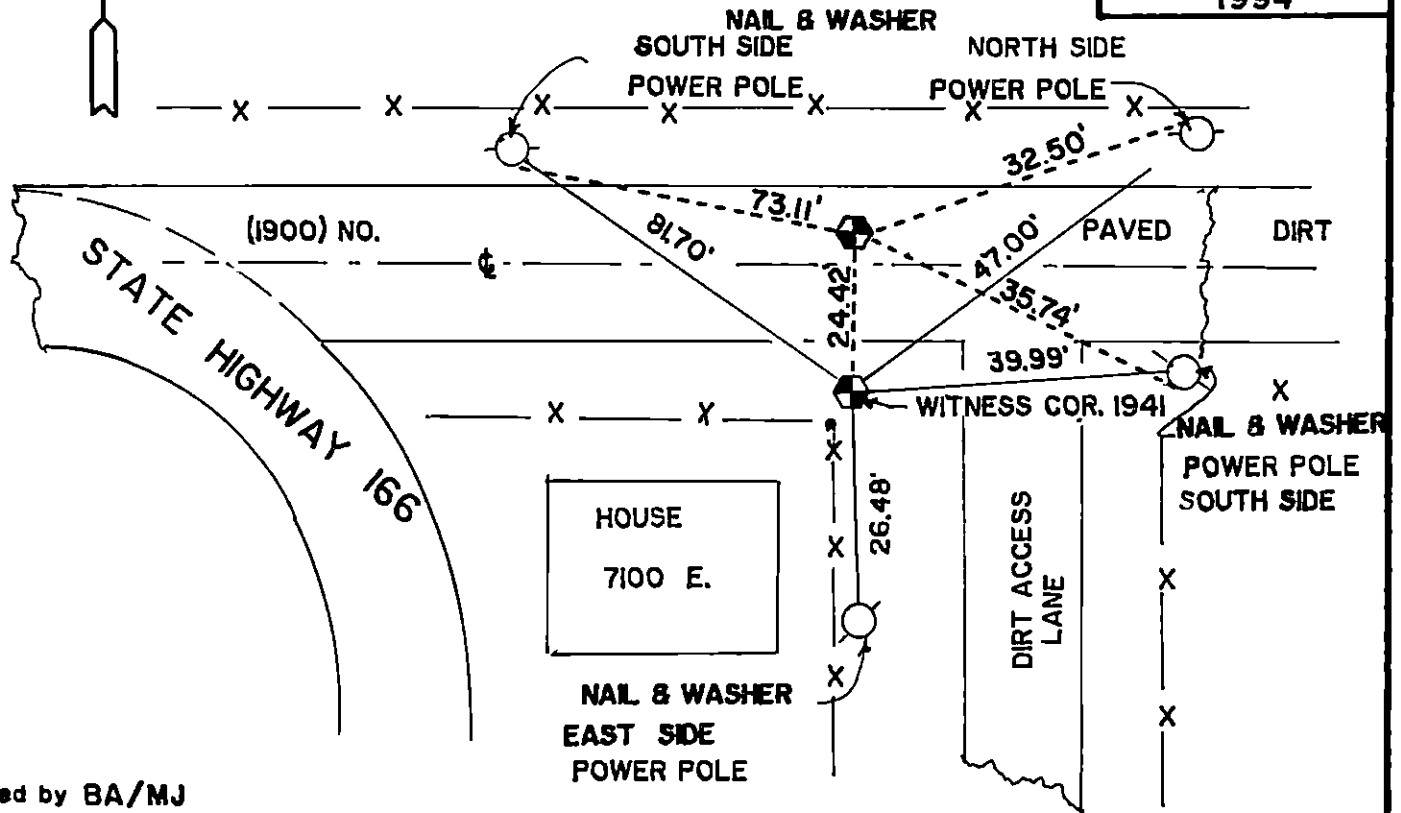
FOUND ORIGINAL STONE 12' BELOW
 OILED ROAD AND REPLACED WITH
 STANDARD CONCRETE MONUMENT SET
 FLUSH WITH ROAD SURFACE IN SEPT.
 OF 1994.

WEBER COUNTY SURVEYOR'S SECTION CORNER TIES

PAGE NO: 23-51



1994



Tied by BA/MJ
Township Revision

Tie Scale: NO SCALE

State Coordinates: X=476,780.995 Y=1,106,623.922
 Elevation: NAD 83
 Bearing to Sink X=1924032.3415
 Bearing to James Peak Y=349830.7231
 Bearing to Ogden Peak 2 NAD 27
 Bearing to Monte Cristo
 Bearing to Durst Mountain

Description of Corner
WEBER COUNTY MONUMENT
 FOUND ORIGINAL STONE 12" BELOW
 OILED ROAD AND REPLACED WITH
 STANDARD CONC. MON. SET FLUSH
 WITH ROAD SURFACE IN SEPT. OF
 1994.

Tie Date 9/21/94

Drawn By M.E.T.

Surveyor's Seal

Recorder's Stamp

Revision of Entry No. _____

Book No. _____ Page No. _____

Approved:

 Weber County Surveyor

PAGE NO. 23-51

SECTION CORNER DATA SHEET

No. 336

WEBER COUNTY SURVEYOR'S OFFICE
831 MUNICIPAL BLDG.
OGDEN, UTAH

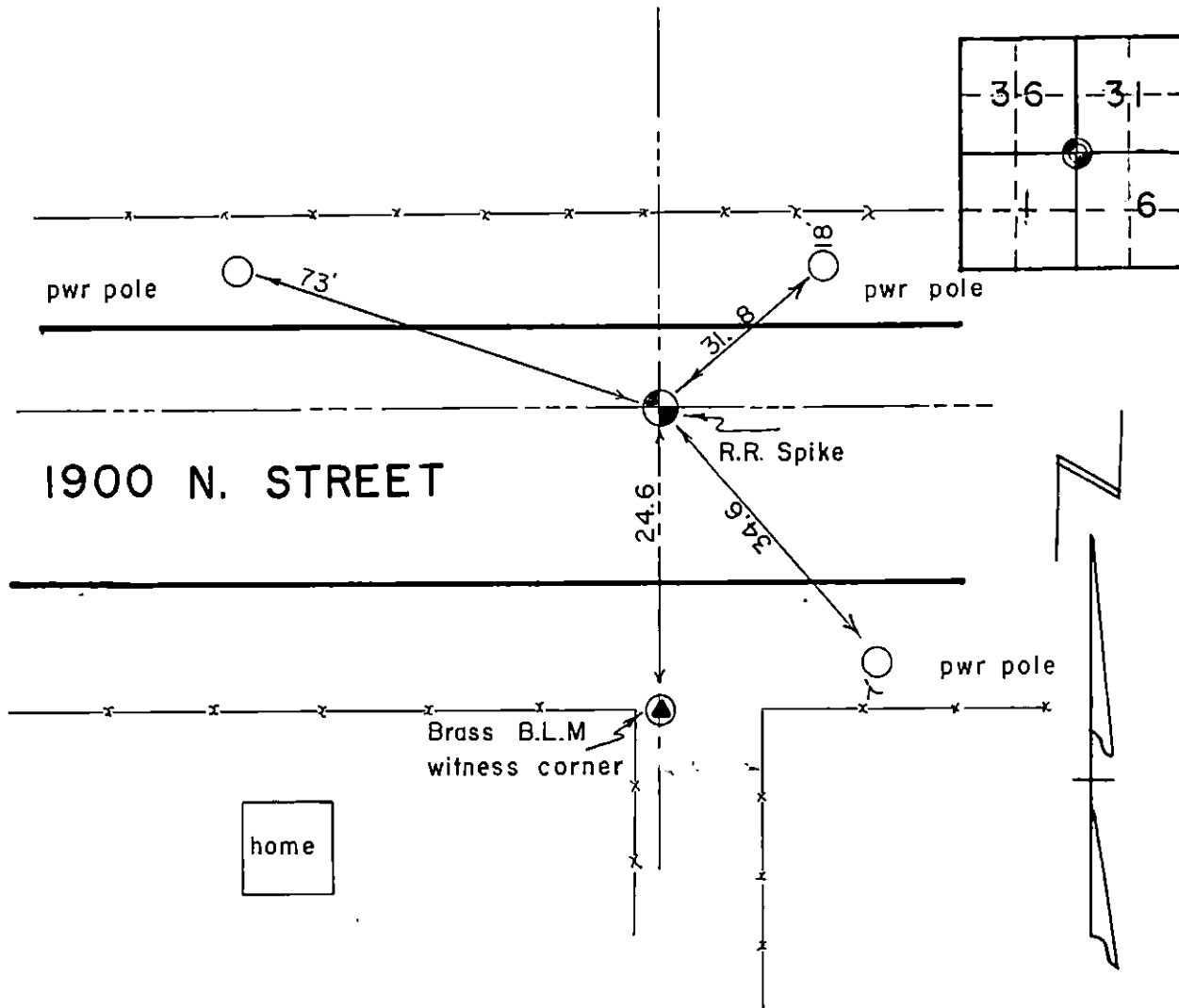
T. 786 N.

R. 182 E.

S.L.B. & M.

U. S. SURVEY

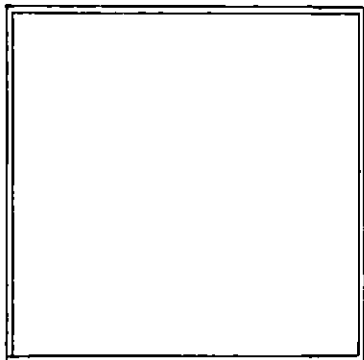
(SKETCH)



DESCRIPTION OF CORNER MONUMENT:

BLM Survey 1964 orange metal sign next to witness corner

SEAL



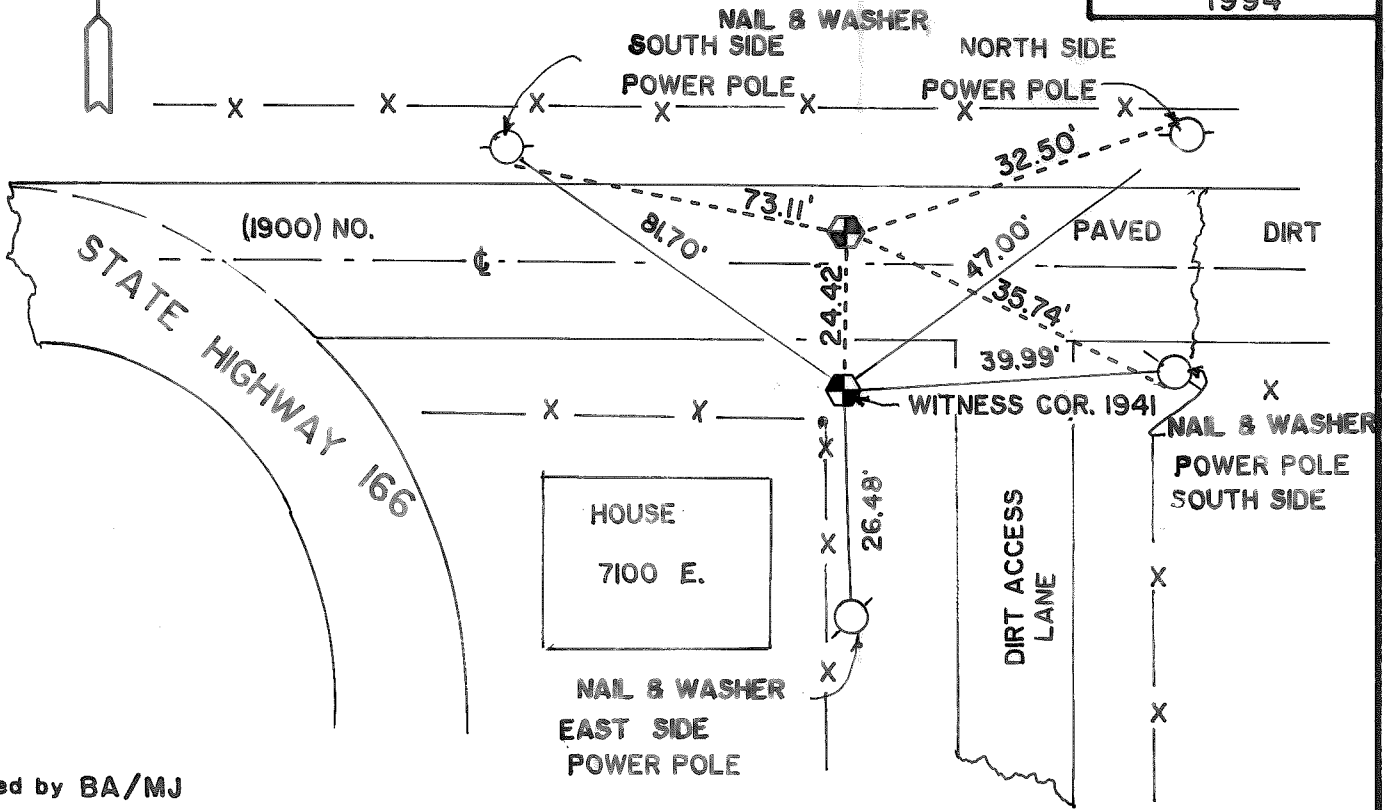
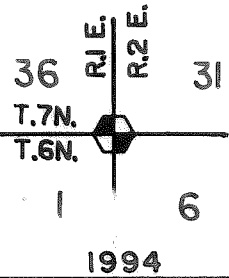
Checked By _____

Date _____ 19 _____

WEBER COUNTY SURVEYOR

WEBER COUNTY SURVEYOR'S SECTION CORNER TIES

PAGE NO: 23-51



Tied by BA/MJ
Township Revision

Tie Scale: NO SCALE

State Coordinates: X=476,780.995 Y=1,106,623.922
Elevation: NAD 83

Bearing to Sink
Bearing to James Peak
Bearing to Ogden Peak 2
Bearing to Monte Cristo
Bearing to Durst Mountain

X=1924032.3415
Y=349830.7231
NAD 27

Description of Corner
WEBER COUNTY MONUMENT

FOUND ORIGINAL STONE 12" BELOW
OILED ROAD AND REPLACED WITH
STANDARD CONC. MON. SET FLUSH
WITH ROAD SURFACE IN SEPT. OF
1994.

Tie Date 9/21/94

Drawn By M.E.T.

Surveyor's Seal

Recorder's Stamp

Revision of Entry No. _____

Book No. _____ Page No. _____

Approved:

Weber County Surveyor

PAGE NO. 23-51

332

Dependent Resurvey of a Portion of the
E. Bdy., Township 6 N., Range 1 E.

CHAINS	
39.91	<p>The witness cor. of Tps. 6 and 7 N., Rs. 1 and 2 E., monumented with an iron post, 3 ins. diam., 8 ins. above ground, at cor. of fence, bears W. and W., with brass cap mkd.</p>
40.28	<p style="text-align: center;">WC T7N R1E R2E <u>S36 S31</u> S1 S6 T6N 1941</p> <p>True point for the cor. of Tps. 6 and 7 N., Rs. 1 and 2 E., falls in center of oiled road, bears E. and W.</p> <p>Land, nearly level. Soil, loam. No timber. No undergrowth.</p>
<p>Dependent Resurvey of a Portion of the N. Bdy., Township 6 N., Range 1 E.</p>	
<p>Reestablishment of the Survey Executed by J. Fewson Smith in 1871 and the Resurveys Executed by Arthur E. Benson in 1887 and Nephi P. Anderson in 1892.</p> <hr/> <p>From the true point for the cor. of Tps. 6 and 7 N., Rs. 1 and 2 E., hereinbefore described.</p> <p>S. 89° 25' W., bet. secs. 1 and 36.</p> <p>Over nearly level land along oiled road.</p> <p>9.70 Intersect paved highway, bears W. to Eden and curves S. 45° E. to Huntsville; thence along highway.</p> <p>40.12 Point for the $\frac{1}{2}$ sec. cor. of secs. 1 and 36, at cor. of fence, bears E. and W. and S., as shown to me by Bill Terrill, long time resident of Huntsville, and is accepted as the best available evidence of the position of the original cor. point.</p> <p>At the cor. point</p> <p>Set an iron post, 30 ins. long, 2$\frac{1}{2}$ ins. diam., 24 ins. in the ground, with brass cap mkd.</p> <p style="text-align: center;">T7N R1E $\frac{1}{2}$ <u>S36</u> S1 T6N R1E 1967</p>	