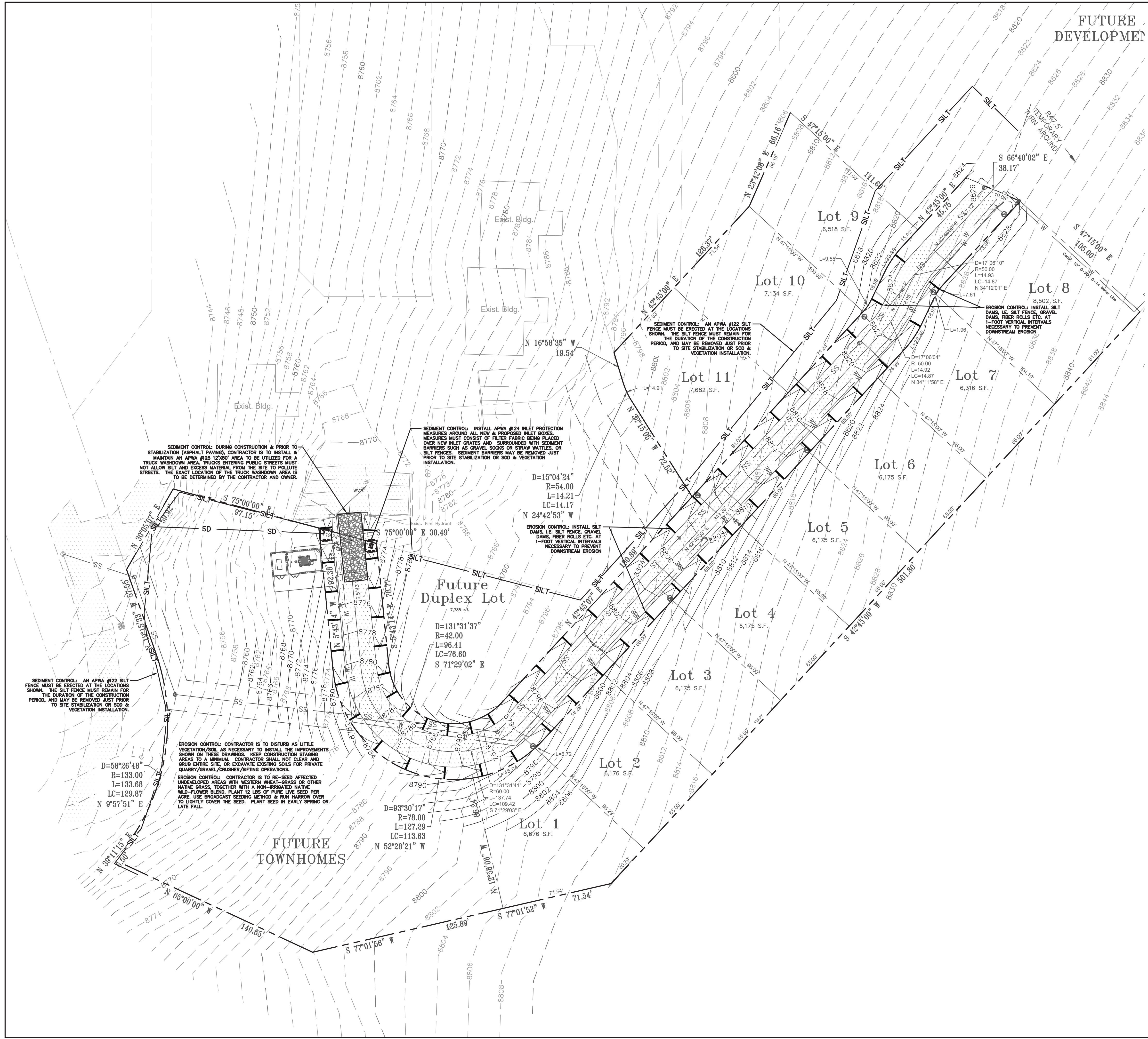


CROSS ENGINEERING SERVICES 1544 Woodland Park Dr. Suite 310 Layton, Utah 84041 Phone: (801) 399-1696 Fax: (801) 399-1693	
THESE PLANS ARE INSTRUMENTS OF PROFESSIONAL SERVICE AND ARE PROVIDED TO YOU FOR YOUR USE ONLY. NO OTHER REPRODUCED RIGHTS INCLUDING COPYRIGHT. © 2007 ALL RIGHTS RESERVED.	
DRAFTED BY: BKS	DATE: _____
DESIGNED BY: JWC	REVISION DESCRIPTION: _____
CHECKED BY: JWC	NO: _____
PLAN & PROFILE ASPEN RIDGE ROAD 04/01/2019 ASPEN RIDGE AT POWDER MOUNTAIN UNINCORPORATED, WEBER COUNTY POWDER MOUNTAIN, UTAH	
PROJECT NO. 18-03-21	
SHEET NUMBER C105	



SWPPP KEYNOTES

Storm Water Pollution Prevention Plan Notes:

- During the excavation & utility construction phase of the project it is the responsibility of the EXCAVATOR & OWNER to implement the Best Management Practices shown on this plan and obtain all necessary permits through the County and the Utah State Division of Environmental Quality. Once infrastructure construction is finished and buildings are under construction, it is the responsibility of the BUILDING CONTRACTOR to implement this plan.
- Weekly inspections are required by the individual responsible for implementing this plan, or within 24 hours after heavy storms. An inspection report must be filled out for every visit and must be available for review by the County or the Utah State Division of Environmental Quality. Inspection Reports must include at a minimum:
 - Date & time of inspection
 - Current weather conditions (list recent storms)
 - Name of person conducting the inspection
 - Name of contractor(s) onsite
 - Description of work currently in progress
 - Best Management Practices in place
 - Problems with silt runoff and erosion control
 - New measures required to treat runoff and minimize erosion
- This plan must be considered as a start for treating runoff and implementing pollution prevention measures. It is the responsibility of the individual responsible for implementing this plan to ensure DYNAMIC measures are implemented, as necessary to reduce pollutants and soil erosion. This may require Best Management Practices to be implemented which are not shown on this plan, and may be required by County or the State.
- Gasoline, Diesel, and Hydraulic Fluids:** Onsite storage of oil, gasoline, solvents and other materials harmful to the environment must be kept to a minimum. If these materials are brought onsite, storage locations must be in areas where storm runoff will not wash pollutants into neighboring areas, storm drainage, drainage ditches, waterways, and/or wetlands. Refueling onsite must be kept to a minimum. All gasoline, diesel fuel and/or hydraulic fluid shall be stored in approved containers, which meet NFPA and OSHA guidelines. When not in use, containers must be stored in compatible secondary containment. Fuel spill containment measures shall be kept within 25 feet of refueling areas. Ensure all workers are trained in the proper handling of fuels, clean-up of fuels, and procedures for containing a spill.
- Chemicals:** Measures must be taken to minimize and contain hazardous material spills. Keep all chemicals in original containers when not in use. SDS sheets shall be kept onsite with the chemicals being used. Hazardous materials spill containment must be kept within 25 feet of chemical use areas. Chemicals used near environmentally sensitive areas, i.e. wetlands, shall be environmentally friendly and bio-degradable products. Ensure all workers are trained in the proper handling of fuels, clean-up of fuels, and procedures for containing a spill. Contact the Utah State Division of Environmental Response and Remediation for spills beyond the ability and training of onsite personnel.
- Lay-down Areas:** Lay-down areas utilizing environmentally hazardous materials must be located at least 25 feet from storm drains, drainage ditches, waterways, and/or wetlands. If this cannot be met, measures such as dikes and/or rubber drain covers should be installed to prevent spills from overflowing into environmental features.
- Porta-Johns:** Portable lavatories must be stored onsite where heavy storms will not wash human waste or chemicals into neighboring areas, storm drain, drainage ditches, waterways, and/or wetlands. Lavatories must be situated on level ground and shall be emptied by trained personnel at frequent intervals. Workers shall regularly inspect the area outside lavatories for leaks. Leaks shall be contained and the unit replaced immediately.
- Concrete trucks must not wash trucks or dump leftover concrete material onsite.
- Contractor must water down existing soils as necessary to keep dust to a minimum. Disturbed earth piles shall be stabilized and/or covered with tarps when rain is expected.
- The contractor shall be responsible for cleaning construction vehicles leaving the site on a daily basis to prevent dust, silt and dirt from being released or tracked offsite.
- Adjacent street frontages shall be swept regularly to remove silt and other dirt, evident from construction activities.
- The Storm Water Pollution Prevention Plan is to be kept onsite at all times during the construction period, and must be available for review upon request by the County or the Utah State Division of Environmental Quality.

CROSS ENGINEERING SERVICES
1544 Woodland Park Dr. Suite 310
Layton, Utah 84041
Phone: (801) 398-1658 Fax: (801) 398-1653

THESE PLANS ARE INSTRUMENTS OF PROFESSIONAL SERVICE AND ARE PROVIDED TO YOU AS AN INSTRUMENT OF SERVICE. ALL RIGHTS ARE RESERVED INCLUDING COPYRIGHT.

DRAFTED BY: BKS
DESIGNED BY: JWC
CHECKED BY: JWC

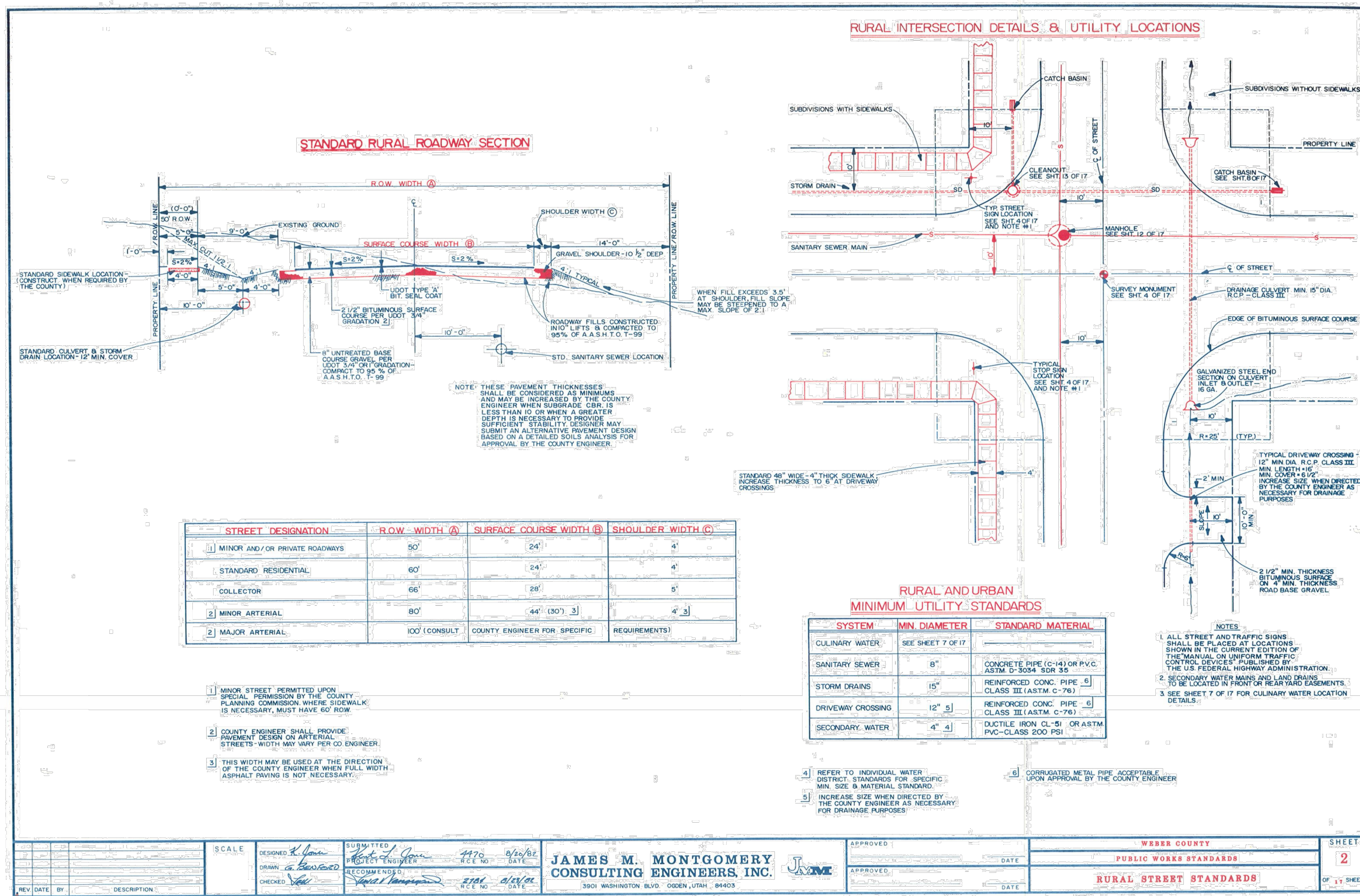
DATE	REVISION DESCRIPTION

EROSION CONTROL PLAN (SWPPP)

04/01/2019

Professional Engineer
No. 7201213-2202
JOSEPH W. CROSS
STATE OF UTAH

PROJECT NO. 18-03-21
SHEET NUMBER C106



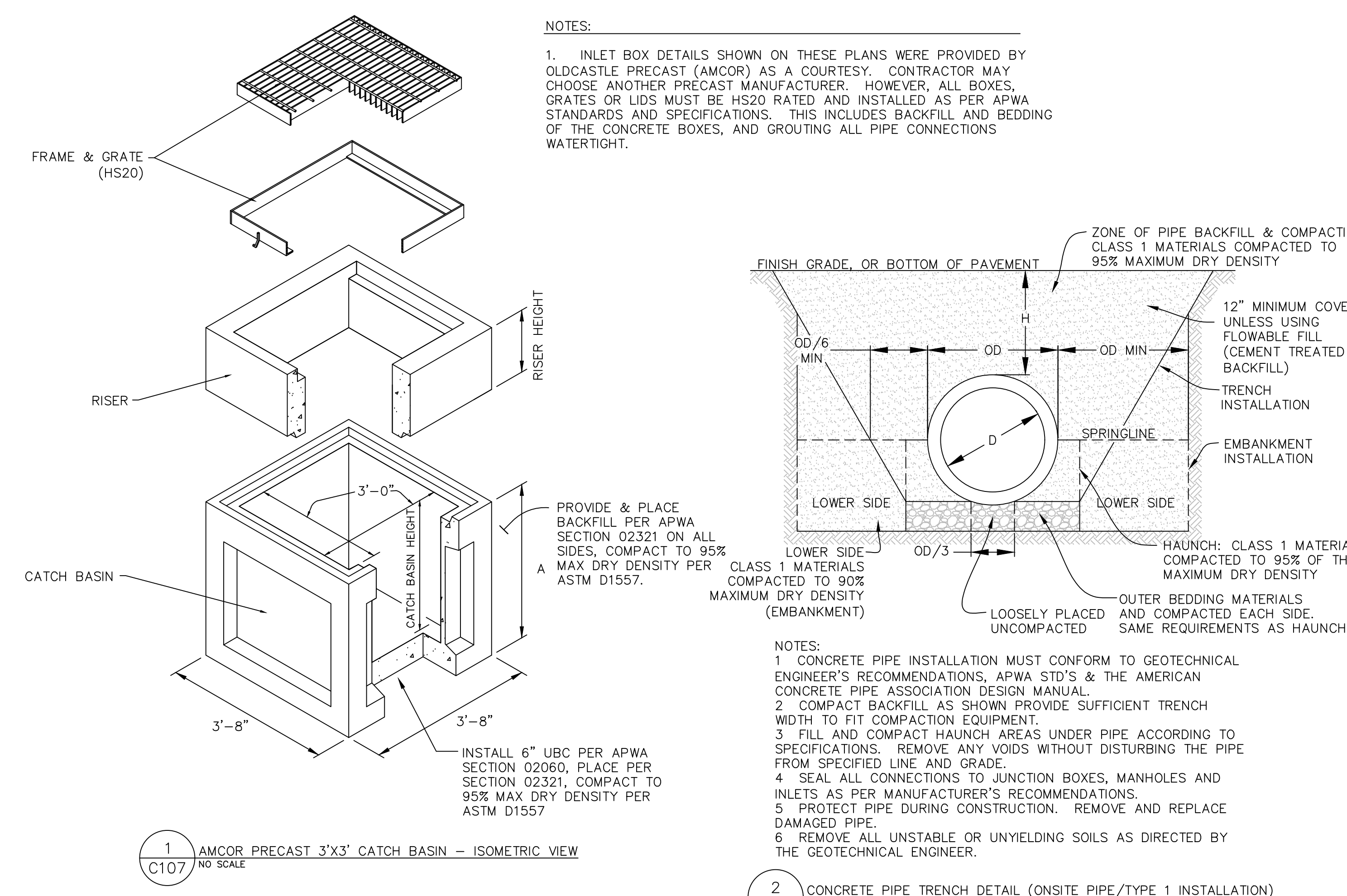
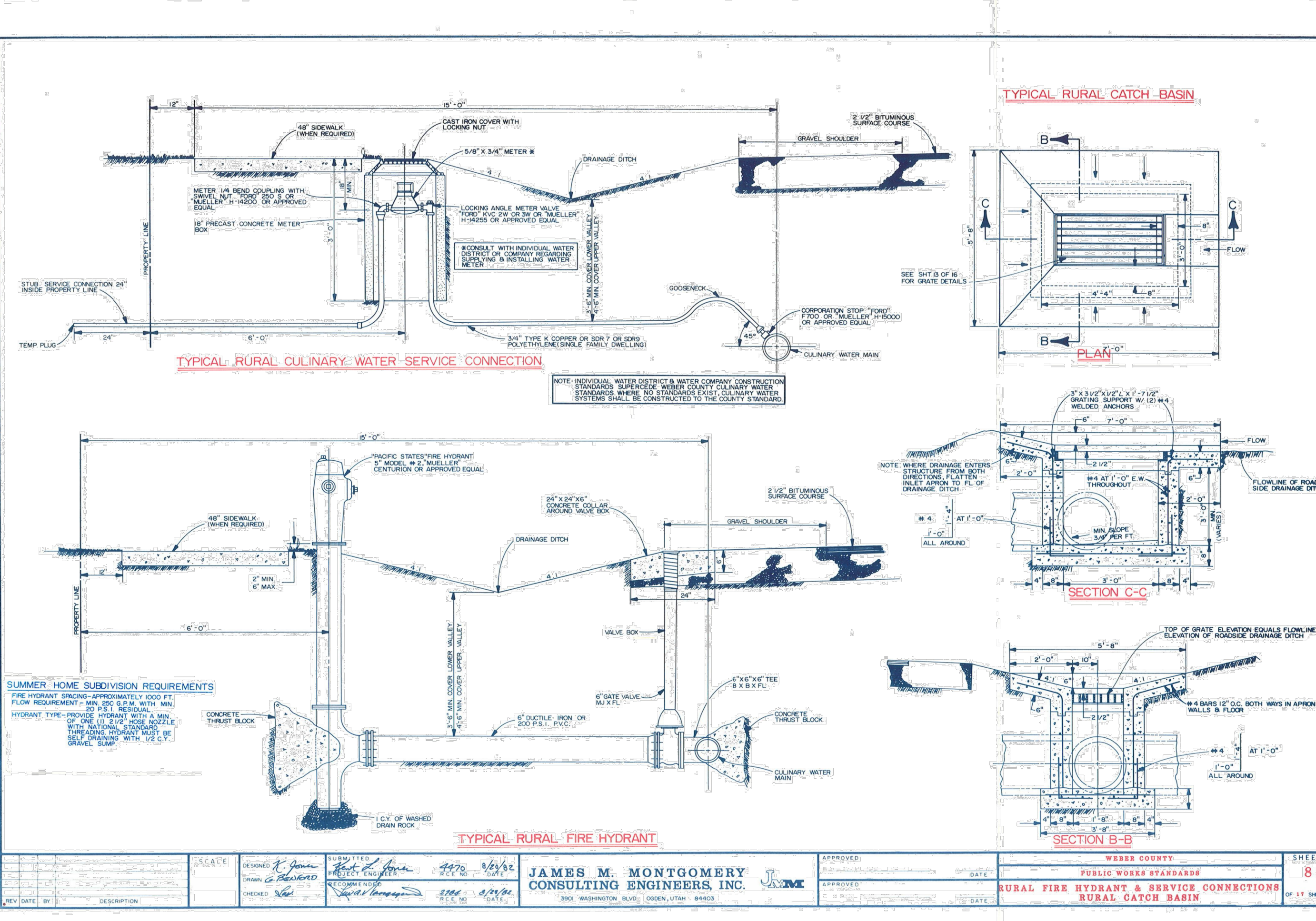
SUMMARY WEBER COUNTY CULINARY WATER STANDARDS

WATER DISTRICT OR WATER COMPANY NAME	MIN. SIZE WATER MAIN	STANDARD MAIN CLASS	MIN. LATERAL SIZE	STANDARD LATERAL MATERIAL AND CLASS	LOCATION OF PROPERTY LINE	LOCATION OF TREATMENT	WATER SHUT OFF INTERSECTION	LOCATION OF FIRE HYDRANT FROM MAIN	FIRE HYDRANT BRACKET	FIRE HYDRANT SPACING	MIN. COVER OVER MAIN	INTERSECTING MAIN SIZE AND CLASS	LOCATION OF FIRE HYDRANT	TRENCH DEPTH	BACKFILL MATERIAL
BONA VISTA WATER IMPROVEMENT DISTRICT	6"	PVC 200 P.S.I.	3/4"	PVC 150 P.S.I.	ON PROPERTY LINE	ON PROPERTY LINE	ON PROPERTY LINE	100 FEET	AS SPECIFIED BY MANUFACTURER	AS SPECIFIED BY MANUFACTURER	48"	36" CONCRETE	ADJACENT TO FIRE HYDRANT	36"	90% OF AASHTO T-99
HOOPER WATER IMPROVEMENT DISTRICT	6"	PVC 200 P.S.I.	3/4"	PVC 150 P.S.I.	ON PROPERTY LINE	ON PROPERTY LINE	ON PROPERTY LINE	100 FEET	AS SPECIFIED BY MANUFACTURER	AS SPECIFIED BY MANUFACTURER	48"	36" CONCRETE	ADJACENT TO FIRE HYDRANT	36"	90% OF AASHTO T-99
TAYLOR - WEST WEBER WATER IMPROVEMENT DISTRICT	6"	PVC 200 P.S.I.	3/4"	PVC 150 P.S.I.	ON PROPERTY LINE	ON PROPERTY LINE	ON PROPERTY LINE	100 FEET	AS SPECIFIED BY MANUFACTURER	AS SPECIFIED BY MANUFACTURER	48"	36" CONCRETE	ADJACENT TO FIRE HYDRANT	36"	90% OF AASHTO T-99
EDEN WATER COMPANY	6"	PVC 160 P.S.I.	3/4"	PVC 120 P.S.I.	ON PROPERTY LINE	ON PROPERTY LINE	ON PROPERTY LINE	100 FEET	AS SPECIFIED BY MANUFACTURER	AS SPECIFIED BY MANUFACTURER	48"	36" CONCRETE	ADJACENT TO FIRE HYDRANT	36"	90% OF AASHTO T-99
LIBERTY PIPELINE COMPANY	6"	PVC 160 P.S.I.	3/4"	PVC 120 P.S.I.	ON PROPERTY LINE	ON PROPERTY LINE	ON PROPERTY LINE	100 FEET	AS SPECIFIED BY MANUFACTURER	AS SPECIFIED BY MANUFACTURER	48"	36" CONCRETE	ADJACENT TO FIRE HYDRANT	36"	90% OF AASHTO T-99
UINTAH HIGHLANDS WATER AND SEWER IMPROVEMENT DISTRICT	6"	DUCTILE IRON	3/4"	DUCTILE IRON	ON PROPERTY LINE	ON PROPERTY LINE	ON PROPERTY LINE	100 FEET	AS SPECIFIED BY MANUFACTURER	AS SPECIFIED BY MANUFACTURER	48"	36" CONCRETE	ADJACENT TO FIRE HYDRANT	36"	90% OF AASHTO T-99
WEBER COUNTY	6"	PVC 200 P.S.I.	3/4"	PVC 150 P.S.I.	ON PROPERTY LINE	ON PROPERTY LINE	ON PROPERTY LINE	100 FEET	AS SPECIFIED BY MANUFACTURER	AS SPECIFIED BY MANUFACTURER	48"	36" CONCRETE	ADJACENT TO FIRE HYDRANT	36"	90% OF AASHTO T-99

WEBER COUNTY PUBLIC WORKS STANDARDS CULINARY WATER STANDARDS

APPROVED: [Signature] DATE: [Date]

JAMES M. MONTGOMERY CONSULTING ENGINEERS, INC. 300 WASHINGTON BLVD. COOKE, UTAH 84003



CROSS ENGINEERING SERVICES
1544 Woodland Park Dr. Suite 310
Layton, Utah 84041
Phone: (801) 398-1858 Fax: (801) 398-1853

DRAFTED BY: BKS
DESIGNED BY: JWC
CHECKED BY: JWC

WEBER COUNTY
PUBLIC WORKS STANDARDS
CULINARY WATER STANDARDS

ASPHEN RIDGE AT POWDER MOUNTAIN UNINCORPORATED, WEBER COUNTY POWDER MOUNTAIN, UTAH

04/01/2019

Professional Engineer
No. 7201213-2202
JOSEPH W. CROSS
STATE OF UTAH

PROJECT NO. **18-03-21**
SHEET NUMBER **C107**