

NOTE: Bid documents should not be separated or issued as partial sets to subcontractors. Bidders are responsible for all portions of the documents that pertain to work covered by sub-bids. Bidder assumes full responsibility for error or misinterpretations resulting from partial sets of Bidding Documents by itself or any sub-bidder.

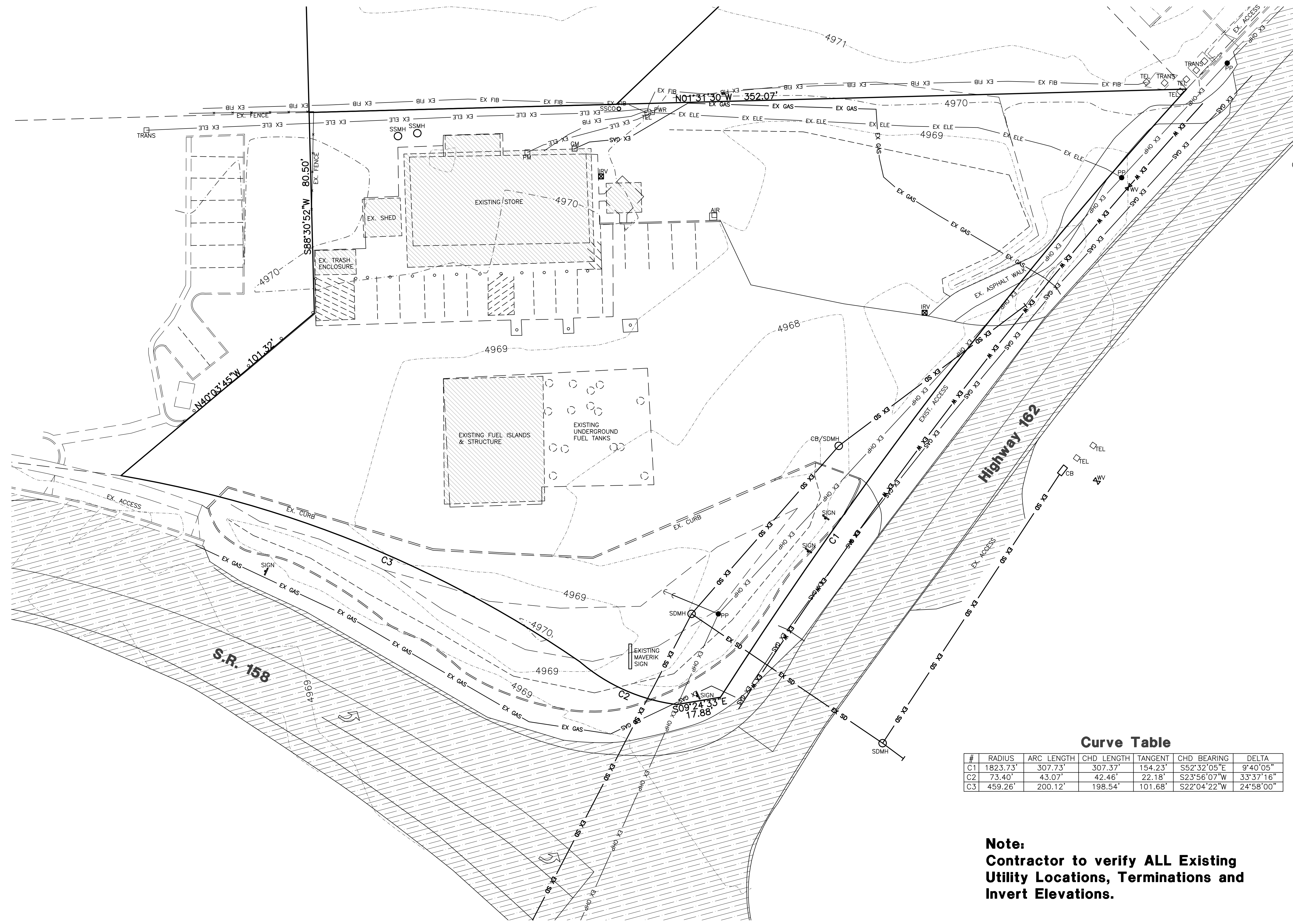
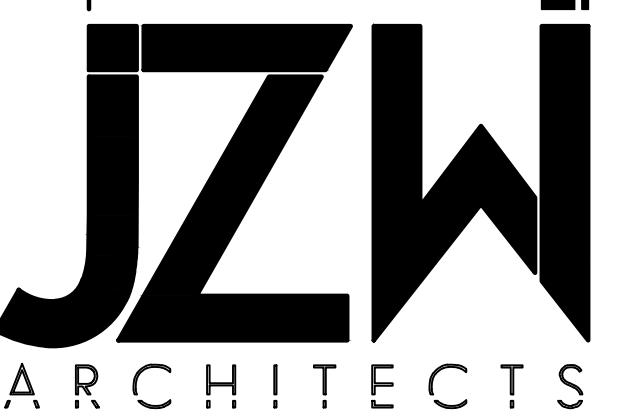
Conflicting information or errors found in the construction documents should be brought to the attention of the architect immediately. In the event of a conflict in the drawings, bidder should not assume the least expensive option will meet the project requirements.



MAVERIK, INC. STORE #250  
5100 EAST & 2500 NORTH  
EDEN, UTAH

SHEET TITLE  
EXISTING  
SITE PLAN

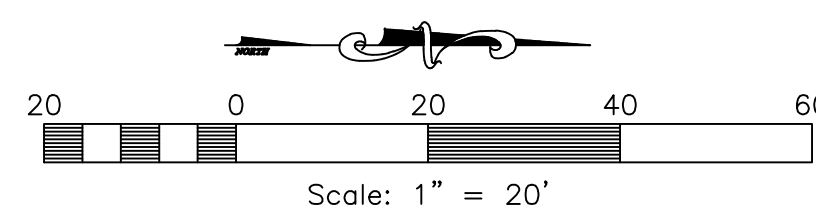
C4



Curve Table

#	RADIUS	ARC LENGTH	CHD LENGTH	TANGENT	CHD BEARING	DELTA
C1	1823.73'	307.73'	307.37'	154.23'	S52°32'05"E	9°40'05"
C2	73.40'	43.07'	42.46'	22.18'	S23°56'07"W	33°37'16"
C3	459.26'	200.12'	198.54'	101.68'	S22°04'22"W	24°58'00"

Note:  
Contractor to verify ALL Existing  
Utility Locations, Terminations and  
Invert Elevations.

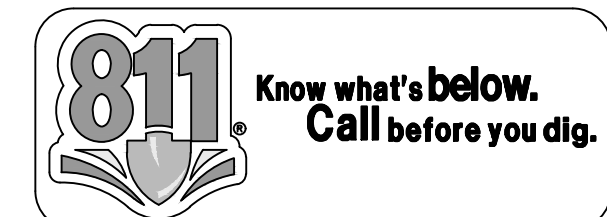


Elevation Datum

SITE BENCHMARK #1:  
BRASS CAP MONUMENT  
NORTHING = 22717.10  
EASTING = 15343.94  
ELEVATION = 4978.61'

Elevation Datum

SITE BENCHMARK #2:  
BRASS CAP MONUMENT  
NORTHING = 22736.34  
EASTING = 12676.29  
ELEVATION = 4963.72'



5160 SOUTH 1500 WEST  
RIVERDALE, UTAH 84405  
TEL: (801) 621-3100  
FAX: (801) 621-2666  
www.reeve-assoc.com

LAND PLANNERS \* CIVIL ENGINEERS  
LAND SURVEYORS \* TRAFFIC ENGINEERS  
STRUCTURAL ENGINEERS \* LANDSCAPE ARCHITECTS

PROJECT NUMBER: 5799-230  
DRAWN BY: RWH  
ENGINEER: JNR