

**Project Narrative/Notes/Revisions**

- 1) 04/13/18 RH - COMPLETED DESIGN FOR FIRST SUBMITTAL TO MAVERIK, INC.
- 2) 04/19/18 RH - REVISED PLAN SET TO INCLUDE SIDEWALK IN UDOT R.O.W.

# MAVERIK, INC.

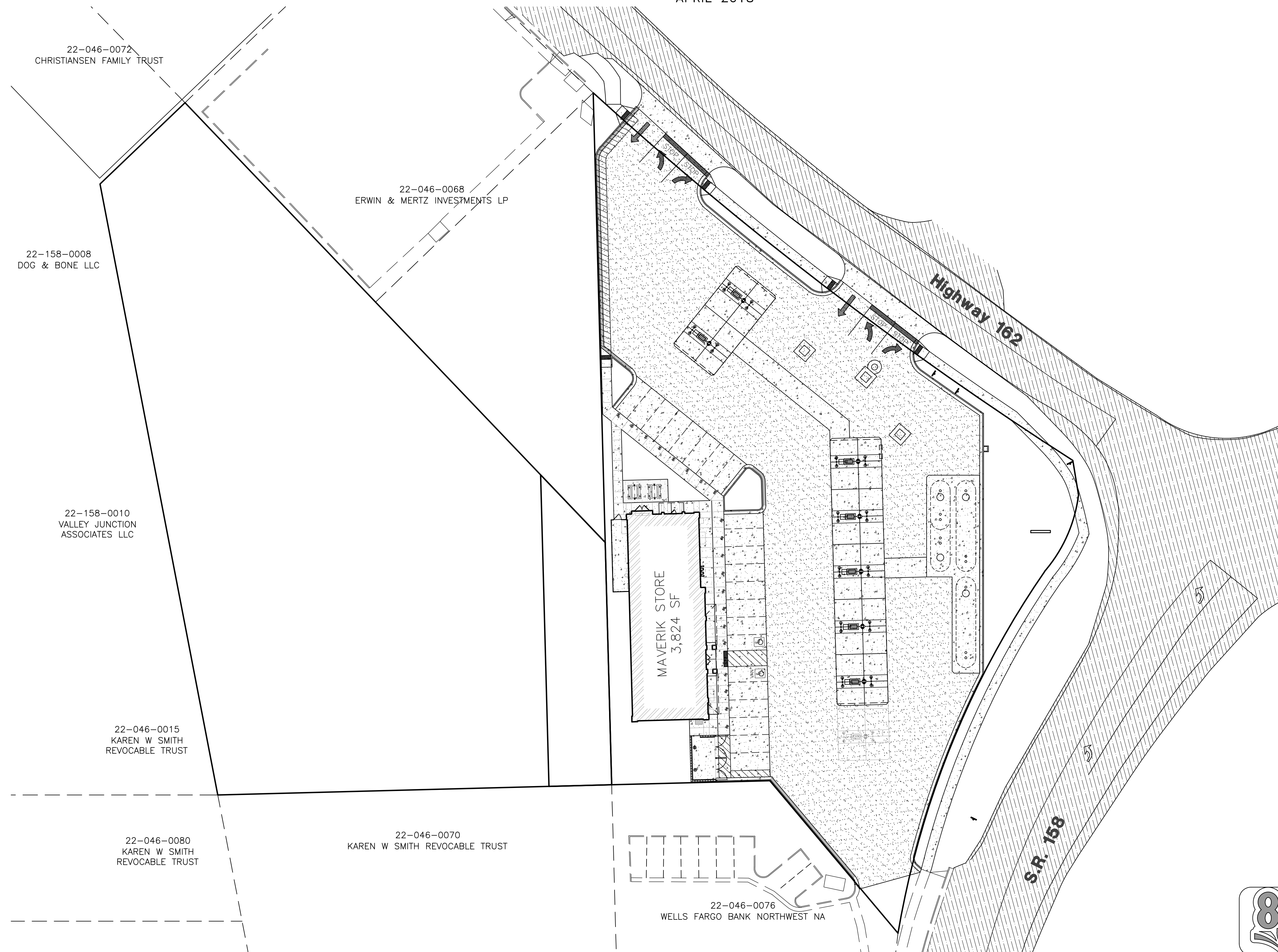
## 5100 EAST & 2500 NORTH

### Site Plans

EDEN, WEBER COUNTY, UTAH  
APRIL 2018



**Vicinity Map**  
NOT TO SCALE

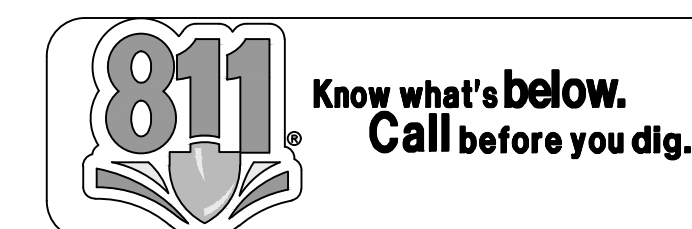


**Sheet Index**

- Sheet C1 - Cover/Index Sheet
- Sheet C2 - Notes & Legend Sheet
- Sheet C3 - Parcel Map
- Sheet C4 - Existing Site Plan
- Sheet C5 - Demolition Plan
- Sheet C6 - Proposed Site Plan
- Sheet C7 - Grading Plan
- Sheet C8 - Utility Plan
- Sheet C8.1 - Utility Plan - Septic Design
- Sheet C9 - Civil Details
- Sheet C9.1 - Civil Details
- Sheet C9.2 - Civil Details
- Sheet C10 - Drainage Details
- Sheet C10.1 - Drainage Details
- Sheet C11 - Underground Storage Tank Details
- Sheet C12 - Storm Water Pollution Prevention Plan
- Sheet C13 - Storm Water Pollution Prevention Plan Details
- Sheet L1 - Landscape Plan
- Sheet L2 - Landscape Details
- Sheet L3 - Irrigation Plan
- Sheet L4 - Irrigation Details

**Site Information**

APN#	22-046-0083, 22-046-0070
5100 EAST 2500 NORTH EDEN, WEBER COUNTY, UTAH	
PROPERTY ZONE	CV-2, AV-3
PARKING STALLS REQUIRED	.....
PARKING STALLS PROVIDED	.....20 + 2 A.D.A.
BICYCLE STALLS PROVIDED	.....3
TOTAL PARCEL AREA	.....114,143 s.f.
DRAINFIELD AREA	.....51,595 s.f.
MAVERIK PARCEL AREA	.....62,548 s.f.
BUILDING AREA	.....3,824 s.f. 6.1%
HARD SURFACED AREA	.....46,020 s.f. 73.6%
LANDSCAPE AREA	.....12,704 s.f. 20.3%



**Engineer's Notice To Contractors**

THE EXISTENCE AND LOCATION OF ANY UNDERGROUND UTILITY PIPES OR STRUCTURES SHOWN ON THESE PLANS WERE OBTAINED FROM AVAILABLE INFORMATION PROVIDED BY OTHERS. THE LOCATIONS SHOWN ARE APPROXIMATE AND SHALL BE CONFIRMED IN THE FIELD BY THE CONTRACTOR, SO THAT ANY NECESSARY ADJUSTMENT CAN BE MADE IN ALIGNMENT AND/OR GRADE OF THE PROPOSED IMPROVEMENT. THE CONTRACTOR IS REQUIRED TO CONTACT THE UTILITY COMPANIES AND TAKE DUE PRECAUTIONARY MEASURE TO PROTECT ANY UTILITY LINES SHOWN, AND ANY OTHER LINES OBTAINED BY THE CONTRACTOR'S RESEARCH, AND OTHERS NOT OF RECORD OR NOT SHOWN ON THESE PLANS.

**Elevation Datum**

SITE BENCHMARK #1:  
BRASS CAP MONUMENT  
NORTHING = 22717.10  
EASTING = 15343.94  
ELEVATION = 4978.61'

**Elevation Datum**

SITE BENCHMARK #2:  
BRASS CAP MONUMENT  
NORTHING = 22736.34  
EASTING = 12676.29  
ELEVATION = 4963.72'

**Developer Contact:**

Troy Jorgensen - Maverik, Inc  
185 South State, Suite 800  
Salt Lake City, Ut. 84111  
PH: (801) 936-5557

**Project Contact:**

Project Manager:  
Project Engineer:



5160 SOUTH 1500 WEST  
RIVERDALE, UTAH 84405  
TEL: (801) 621-3100  
FAX: (801) 621-2666  
www.reeve-assoc.com

LAND PLANNERS \* CIVIL ENGINEERS  
LAND SURVEYORS \* TRAFFIC ENGINEERS  
STRUCTURAL ENGINEERS \* LANDSCAPE ARCHITECTS

PROJECT NUMBER: 5799-230  
DRAWN BY: RWH  
ENGINEER: JNR

PROJECT NUMBER

ISSUE DATE:

APR. 13, 2018

REVISIONS:

No. Date Description

No.	Date	Description

NOTE:  
Bid documents should not be separated or issued as partial sets to subcontractors. Bidders are responsible for all portions of the documents that pertain to work covered by sub-bids. Bidder assumes full responsibility for error or misinterpretations resulting from partial sets of Bidding Documents by itself or any sub-bidder.

Conflicting information or errors found in the construction documents should be brought to the attention of the architect immediately. In the event of a conflict in the drawings, bidder should not assume the least expensive option will meet the project requirements.



**MAVERIK, INC. STORE #250**  
**5100 EAST & 2500 NORTH**  
**EDEN, UTAH**

SHEET TITLE  
**COVER/INDEX SHEET**

**C1**

