

BOBCAT RIDGE AT POWDER MOUNTAIN, PHASE 2

LOCATED IN ALL OF SECTION 8,
TOWNSHIP 7 NORTH, RANGE 2 EAST
SALT LAKE BASE & MERIDIAN,
WEBER COUNTY, UTAH
NOVEMBER 2018

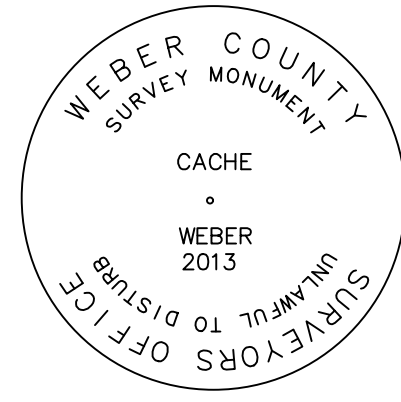
BASIS OF BEARINGS
N 89°55'51" W 1381.07'
(N 89°56'05" W 1380.98' RECORD)

FOUND WEBER COUNTY LINE
MONUMENT PER WEBER COUNTY
SURVEYOR, 4" BRASS CAP 2013,
GOOD CONDITION
FLUSH IN CONCRETE
DETAIL "A"

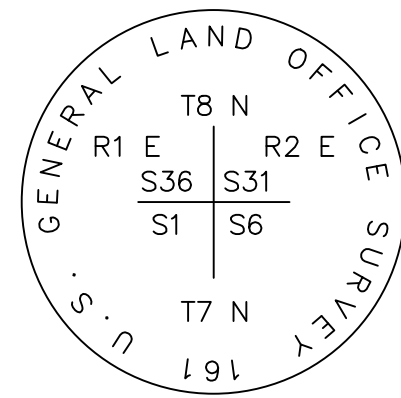
NORTHEAST CORNER SECTION 1,
TOWNSHIP 7 NORTH, RANGE 1 EAST
SALT LAKE BASE AND MERIDIAN
FOUND GLO 1944, 4" BRASS CAP,
GOOD CONDITION
6" ABOVE GROUND
DETAIL "B"

NORTH QUARTER CORNER SECTION 8,
TOWNSHIP 7 NORTH, RANGE 2 EAST
SALT LAKE BASE AND MERIDIAN,
FOUND 1944 GLO 4" BRASS CAP,
GOOD CONDITION
6" ABOVE GROUND
DETAIL "C"

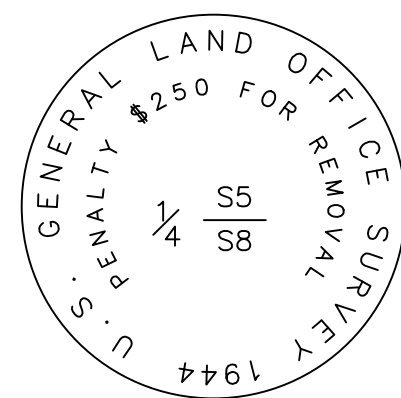
SHEET/DWG
POP-CDD-24x36
2018-11-17
NONE
N:\SUBDIVISIONS\CADD\18-200-22-MEHER ESTATE LOTS - BOBCAT RIDGE SURVEY\PLANS\FINAL\PHASE 2



DETAIL "A"



DETAIL "B"



DETAIL "C"

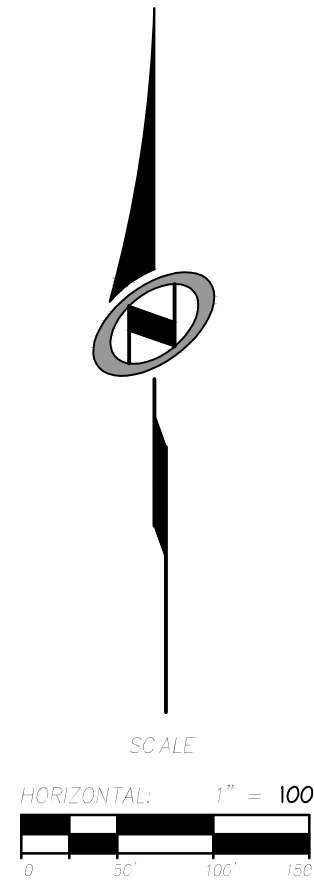
CURVE TABLE					
CURVE	RADIUS	LENGTH	DELTA	BEARING	CHORD
C1	600.00	181.10	171°7'39"	S83°07'47"W	180.42
C2	89.00	80.42	51°46'23"	S88°44'01"W	77.71
C3	175.00	84.10	27°32'03"	N44°54'39"E	83.29
C4	200.00	71.85	20°34'59"	N41°26'07"E	71.46
C5	200.00	24.26	6°57'04"	N55°12'08"E	24.25
C6	23.00	20.77	51°43'51"	S32°48'44"W	20.07
C7	54.50	64.56	67°52'19"	N40°52'58"E	60.85
C8	54.50	32.55	34°13'20"	S88°04'12"E	32.07
C9	54.50	46.36	48°44'16"	S46°35'24"E	44.97
C10	54.50	45.08	47°23'21"	S01°28'25"W	43.80
C11	54.50	81.08	85°14'27"	S67°47'18"W	73.81
C12	23.00	20.77	51°43'52"	N84°32'36"E	20.07
C13	150.00	12.81	4°53'28"	N56°13'56"E	12.80
C14	150.00	59.28	22°38'34"	N42°27'55"E	58.89
C15	625.00	71.61	6°33'52"	S88°29'41"W	71.57
C16	625.00	117.04	10°43'48"	S79°50'52"W	116.87
C17	23.00	20.77	51°43'51"	S79°39'06"E	20.07
C18	54.50	5.12	5°22'41"	N56°28'31"W	5.11
C19	54.50	68.43	71°56'21"	S84°51'57"W	64.02
C20	54.50	54.80	57°36'36"	S20°05'29"W	52.52
C21	54.50	65.02	68°21'23"	S42°53'31"E	61.23
C22	54.50	76.27	80°10'41"	N62°50'27"E	70.19
C23	23.00	20.77	51°43'48"	S48°37'00"W	20.07
C24	575.00	120.90	12°02'51"	S80°30'23"W	120.68
C25	575.00	52.65	5°14'48"	S89°09'13"W	52.64
C26	114.00	91.61	46°02'34"	N88°22'39"W	89.16
C27	114.00	11.45	5°45'15"	S65°43'27"W	11.44
C28	54.50	15.20	15°58'32"	S56°53'03"W	15.15
C29	54.50	15.20	15°58'32"	S40°54'31"W	15.15

TABLE A
(SEE PLAT NOTE 26)

LOT NO.	ERU'S
27	1
28	1
29	1
30	1
31	1
32	1
33	1
34	1
35	1
36	1
37	1
38	1
39	1
40	1
41	1
42	1
43	1
44	1
45	1
46	1
47	1
48	1

LINE TABLE		
LINE	LENGTH	BEARING
L1	71.12	S58°40'40"W
L2	10.27	S58°40'40"W
L3	60.85	S58°40'40"W
L4	88.57	N74°28'58"E
L5	27.72	S74°28'58"W
L6	60.85	S74°28'58"W
L7	278.69	S62°50'49"W
L8	75.73	N41°06'13"W
L9	15.00	N48°53'47"E
L10	15.00	N48°53'47"E
L11	75.73	N41°06'13"W
L12	100.00	N67°46'44"E

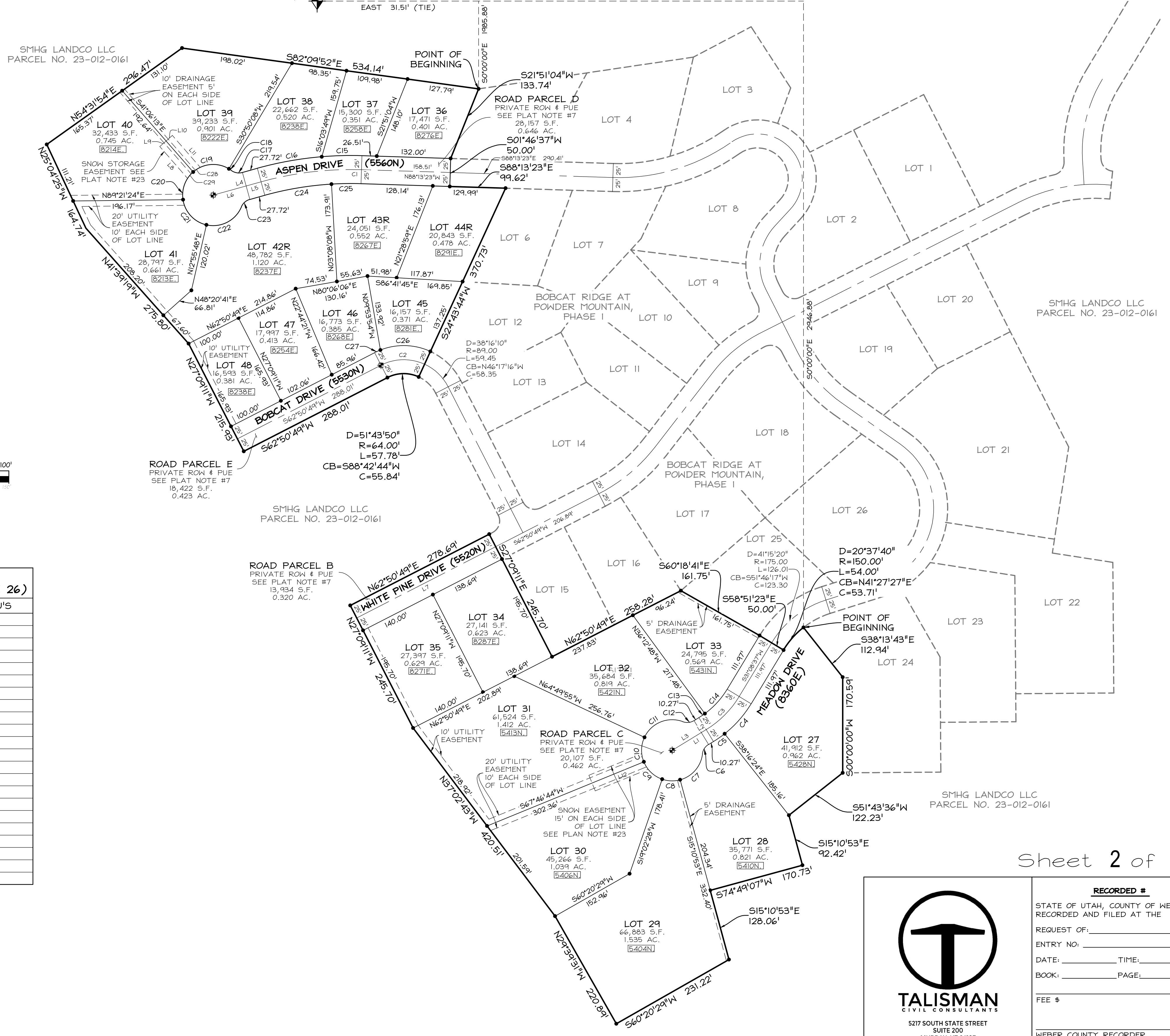
- LEGEND**
- BOUNDARY LINE
 - - - SECTION LINE
 - - - ADJOINER DEED LINES
 - - - RIGHT-OF-WAY LINE
 - - - ROAD CENTERLINE
 - ◆ SECTION CORNER AS NOTED
 - ⊕ SET CL MONUMENT
 - SET NO.5 X 24" LONG REBAR WITH PLASTIC CAP STAMPED "TALISMAN"



SMHG LANDCO LLC
PARCEL NO. 23-012-0161

SMHG LANDCO LLC
PARCEL NO. 23-012-0161

SMHG LANDCO LLC
PARCEL NO. 23-012-0161



SMHG PHASE I, LLC.
3632 N. WOLF CREEK DR.
EDEN, UT, 84310



Sheet 2 of 2

RECORDED #
STATE OF UTAH, COUNTY OF WEBER,
RECORDED AND FILED AT THE
REQUEST OF: _____
ENTRY NO. _____
DATE: _____ TIME: _____
BOOK: _____ PAGE: _____
FEE \$ _____
WEBER COUNTY RECORDER