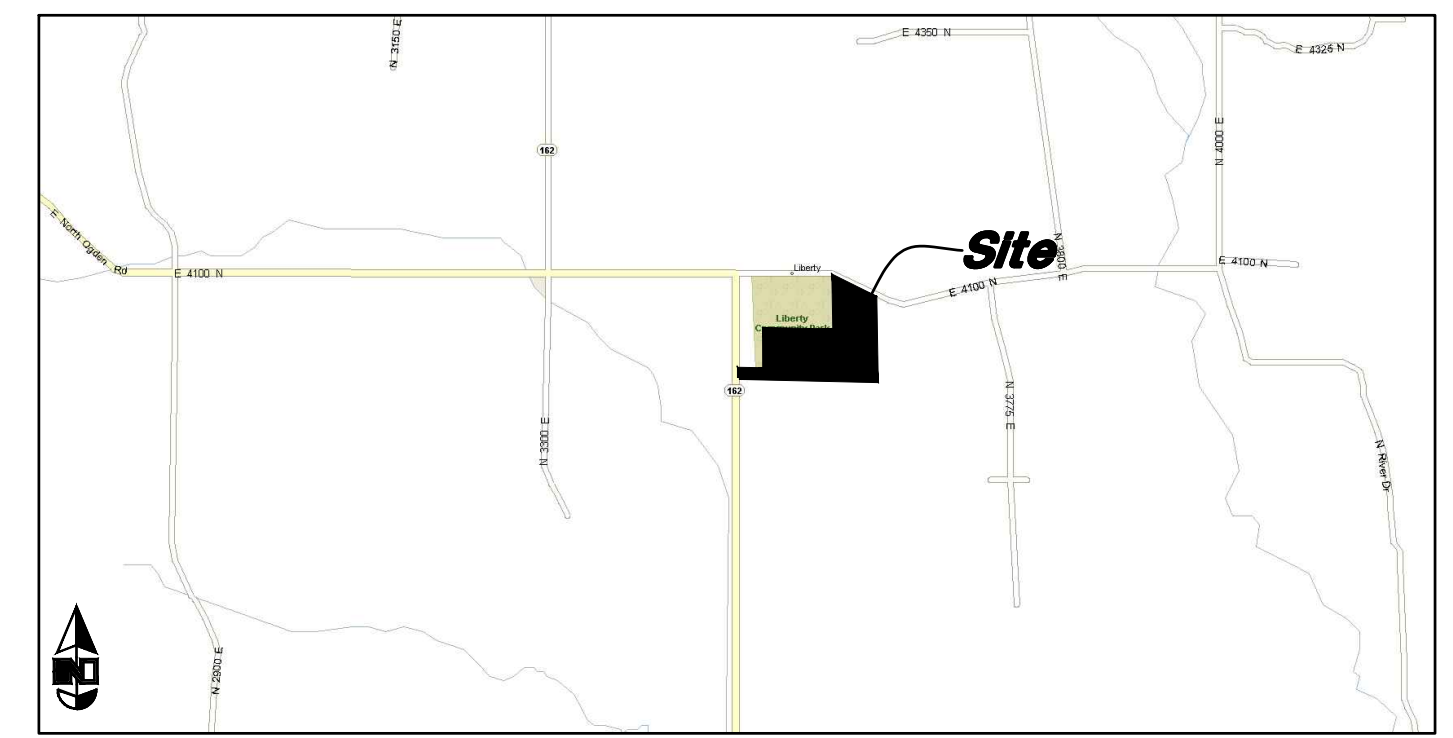


Liberty Acres

A part of the Northeast 1/4 of Section 20, T7N, R1E, SLB&M, U.S. Survey
Weber County, Utah
April 2018



VICINITY MAP
Not to Scale

Legend

(Note: All items may not appear on drawing)

San. Sewer Manhole	Ductile Iron	DI
Water Manhole	Polyvinyl Chloride	PVC
Storm Drain Manhole	Top of Asphalt	TA
Cleanout	Edge of Asphalt	EA
Flowline	Centerline	CL
Finish Floor	Finish	FL
Top of Curb	Top of Wall	TC
Top of Walk	Top of Concrete	TW
Top of Concrete	Top of Concrete	TCN
Match Existing	Natural Ground	NG
Water Valve	Finish Grade	FG
Sanitary Sewer	Match Existing	ME
Culinary Water	Fire Department Connection	FDC
Gas Line	Finish Contour	90
Irrigation Line	Exist. Contour	95.357A
Storm Drain	Finish Grade	95.721A
Telephone Line	Exist. Grade	R
Secondary Waterline	Ridge Line	R
Power Line	Direction of Flow	
Fire Line	Existing Asphalt	
Land Drain	New Asphalt	
Power pole	Existing Concrete	
Power pole w/guy	New Concrete	
Light Pole	To be Dedicated for Public Right-of-Way	
Fence		
Flowline of ditch		
Overhead Power line		
Corrugated Metal Pipe		
Concrete Pipe		
Reinforced Concrete Pipe		

YOU FOUND LANDMARK CAPS AND AGREE WITH LANDMARK SURVEY THE MAP SHOWS YOU DIFFER IF YOU COULD PLEASE EXPLAIN THE DIFFERENCE OF WHY YOU'RE NOT AGREEING WITH THE CAPS ON THE MAP?

NARRATIVE

This Survey and subdivision plat were requested by Mr. Steve Waldrip for the purpose of creating two parcels and dedicating a portion of roadway.

Weber County Brass Cap Monuments were found at the North Quarter Corner, South Quarter Corner and East Quarter Corner, in Ogden City, Weber County Utah.

A Line between Monuments found at the North Quarter Corner and the South Quarter Corner of Section 20 with a Bearing of North 0°09'22" West was used as the Basis of Bearings for this Survey.

The boundaries of this parcel were retraced using a survey prepared by Landmark Surveying for Dick Dixon dated 9-10-97, (Filed with the Weber County Surveyor's Office on April 11 2000, as Filing #2472)

Property Corners and other Survey Markers were set as depicted on this survey.

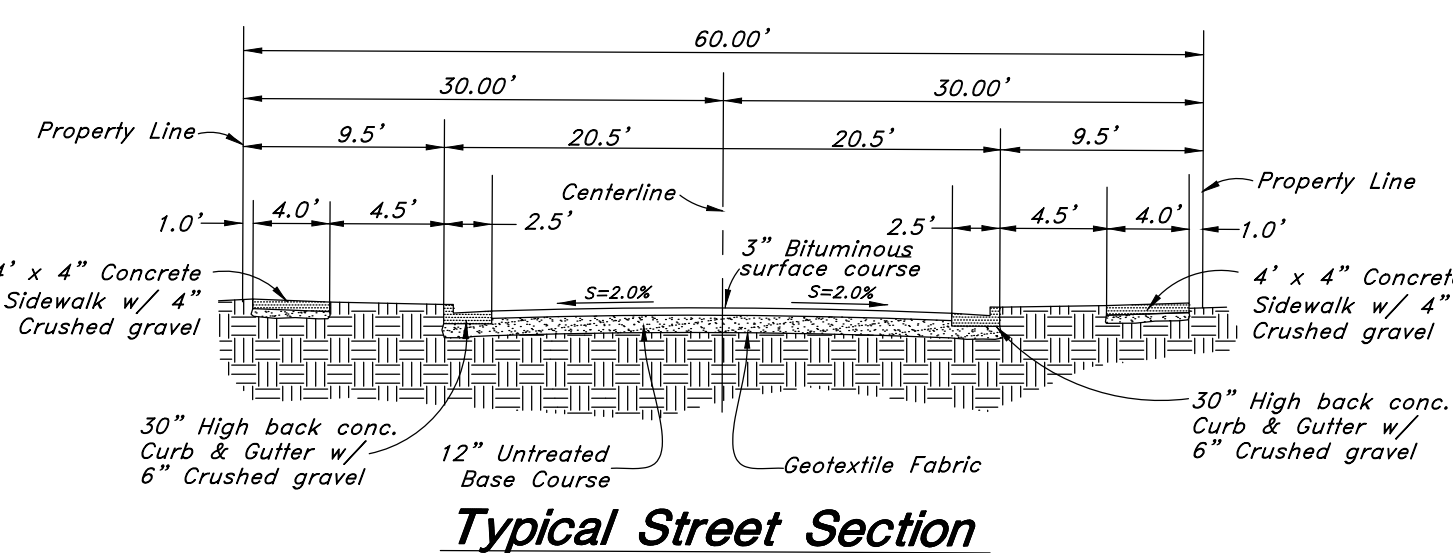
SURVEY REFERENCES TWO CENTER OF SECTIONS, WHICH ONE WAS CALCULATED FOR YOUR MAP

BOUNDARY DESCRIPTIONS

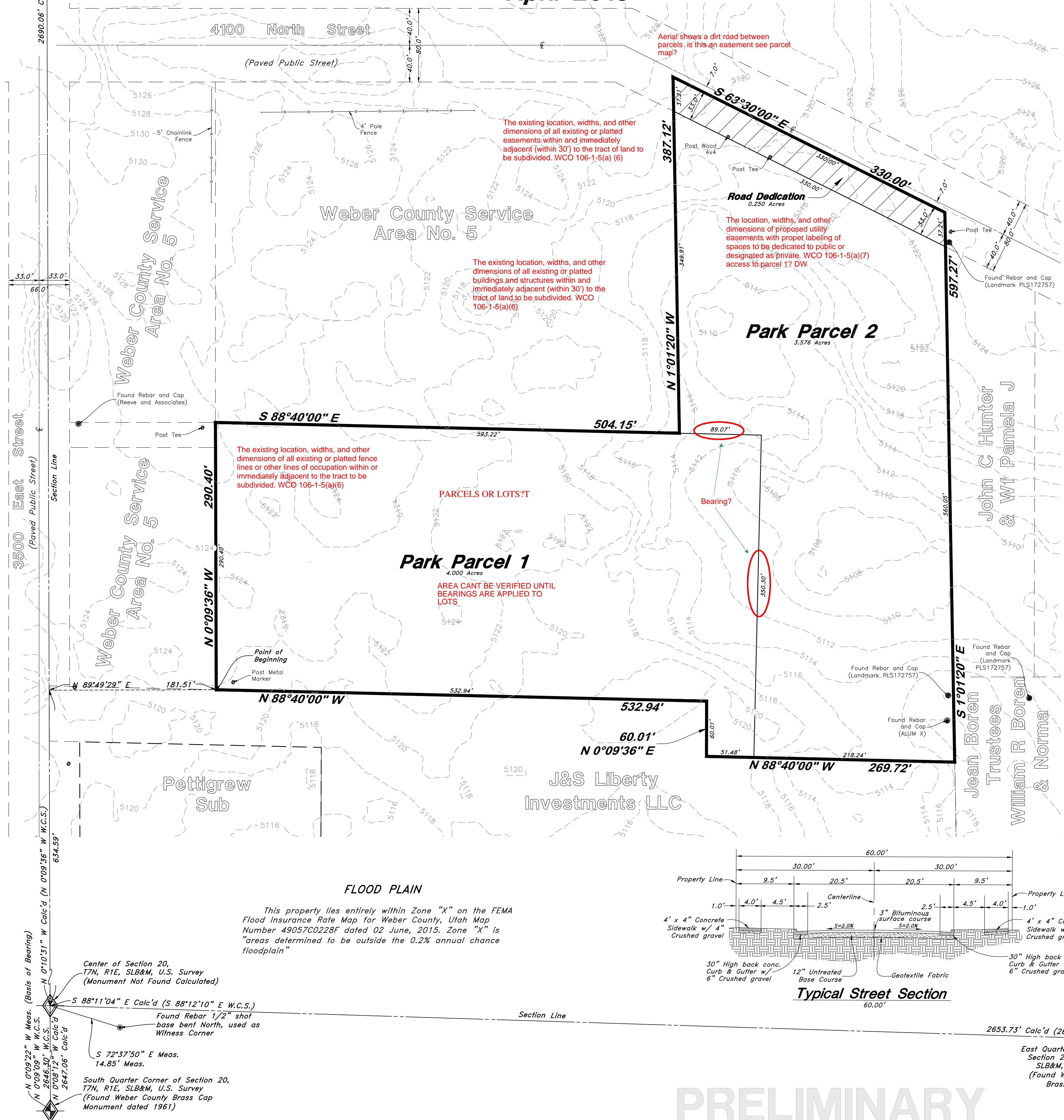
A part of the Northeast Quarter of Section 20, Township 7 North, Range 1 East, Salt Lake Base and Meridian, U.S. Survey, Liberty, Weber County Utah:

Beginning at a point 634.59 feet North 0°10'31" West along the section line and 181.51 feet North 89°49'29" East from the Center of Section 20, Township 7 North, Range 1 East, Salt Lake Base and Meridian, U.S. Survey; and running thence North 0°09'36" West 290.40 feet; thence South 88°40'00" East 504.15 feet; thence North 1°01'20" West 387.12 feet into the Centerline of 4100 North Street; thence South 63°30'00" East 330.00 feet along said Centerline; thence South 1°01'20" East 597.27 feet along an Existing fence line; thence North 88°40'00" West 269.72 feet; thence North 0°09'36" East 60.01 feet; thence North 88°40'00" West 532.94 feet to the Point of Beginning.

Containing: 7.826 Acres



Typical Street Section



FLOOD PLAIN

This property lies entirely within Zone "X" on the FEMA Flood Insurance Rate Map for Weber County, Utah Map Number 49057C0228F dated 02 June, 2015. Zone "X" is "areas determined to be outside the 0.2% annual chance floodplain"

NEED TITLE REPORT TO COMPLETE REVIEW.

MAP STATES AS A PRELIMINARY SUBMITTAL, MIRADI PROJECT DESCRIPTION CALLS IT A FINAL SUBDIVISION, CHECKED FOR PRELIMINARY REVIEW, DID ADD SOME FINAL REVIEW NOTES, BUT WILL WAIT FOR THE NEXT SUBMITTAL

A three-inch by three-inch space in the lower right hand corner of the drawing for Recording Information. WCO 106-1-8(c)(1)

MISSING ALL SIGNATURE BLOCKS
MISSING SURVEYOR CERTIFICATE
MISSING OWNERS DEDICATION

The plat shall have a detailed description of all monuments found and each one shall be referenced on the plat including the type, size, condition, and location in reference to the surface of the ground as well as a description or graphic depiction of the markings, date, agency, entity, or surveyor as inscribed on the monument. WCO 45-3-3(b)

LIBERTY IRRIGATION PER ROS 4127

ENGINEER:
Great Basin Engineering, Inc
c/o Andy Hubbard
AndyH@greatbasineng.com
5746 South 1475 East Suite 200
Ogden, Utah 84405
(801) 394-4515

DEVELOPER:
Steve Waldrip
1911 North 5700 East
Eden, UT 84310
(801) 389-9329

GREAT BASIN ENGINEERING
 5746 SOUTH 1475 EAST OGDEN, UTAH 84403
 MAIN (801) 394-4515 S.L.C (801) 521-0222 FAX (801) 392-7544
 WWW.GREATBASINENGINEERING.COM

Preliminary Plan
Liberty Acres
 Approx. 3500 East & 3992 North
 Weber County, Utah
 A part of Section 20, T7N, R1E, SLB&M, U.S. Survey

27 Apr, 2018

SHEET NO.

1

14N78B

PRELIMINARY