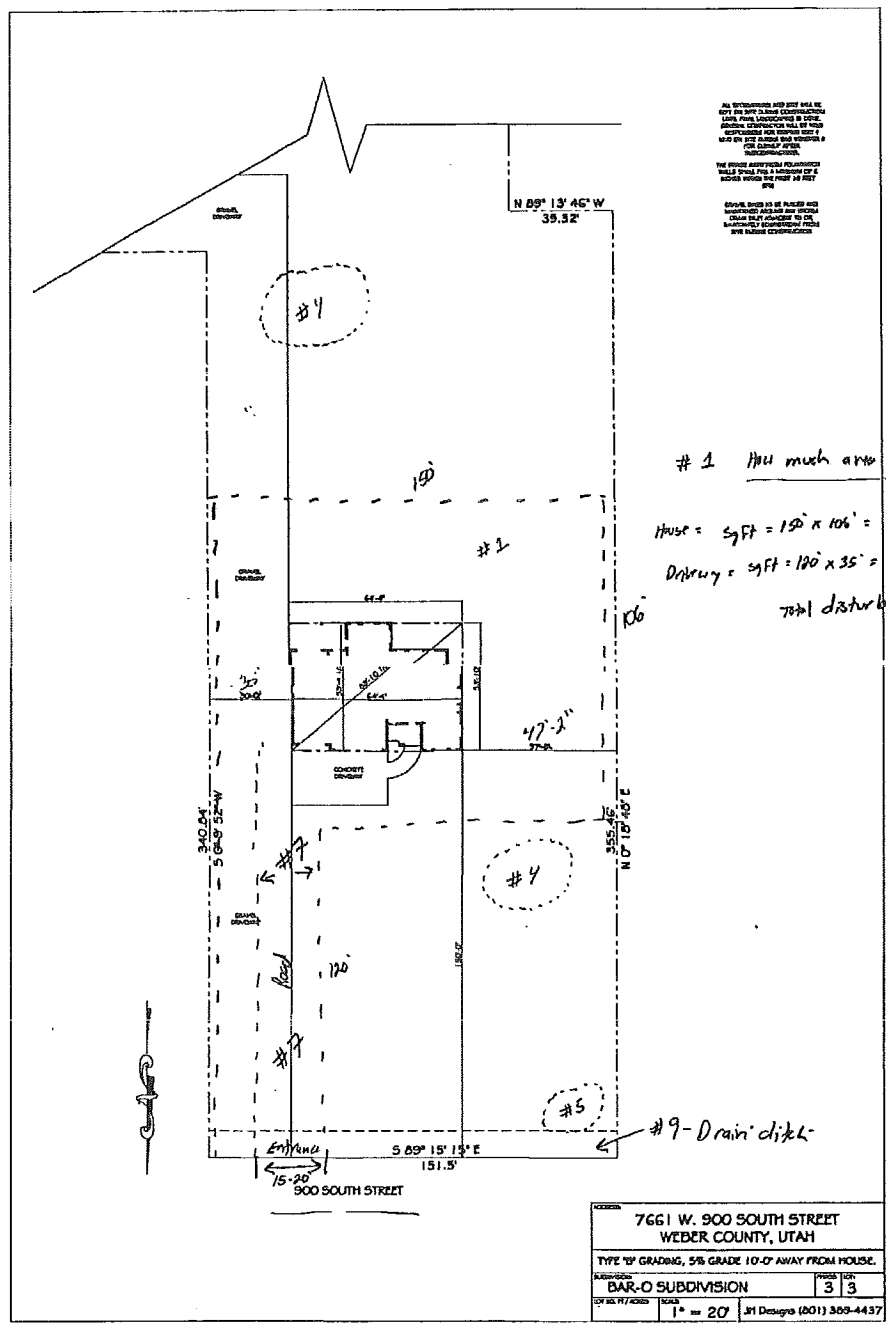


- #10. Rain/Storm water soaks into the ground or feeds into the Front drain ditch.
- #11. There are currently no existing occupations on the property.

Completed by: Chris Clem
May 24, 2012



#1 How much area will be disturbed?
 House = 9 FT = 150' x 106' = 15,900 sq FT
 Driveway = 9 FT = 100' x 35' = 3,500 sq FT
 Total disturbed area = 20,100 sq FT

7661 W. 900 SOUTH STREET WEBER COUNTY, UTAH	
TYPE "B" GRADING, 5% GRADE 10'-0" AWAY FROM HOUSE.	
BAR-O SUBDIVISION	3 3
1" = 20'	31 Designs (201) 309-4437

- #1 = Disturbed Area 20,100 sq FT approx.
- #2 = Chris Clem - 801-232-0162 will be responsible for the conditions of the site.
- #3 = Chris will stay in contact with owners on East & West side. Keeping them informed and resolving concerns as they arrive.
- #4 = Excavated material locations will be in back south East and Front north west.
- #5 = Concrete Wash-out - Once construction is completed it will be covered with fill materials.
- #6 = Porta-Johns will not be provided. We will be using the Home to the west as needed.
- #7 = 15'-20" Road Feeding 5-10' From east property line. 8'-10" - 4" minus with 3" Road base from the road to the house.
- #8 = 9" minus road will be installed, if excessive dirt gets on the road Chris will have it swept off.
- #9 = Drain ditch has been covered.