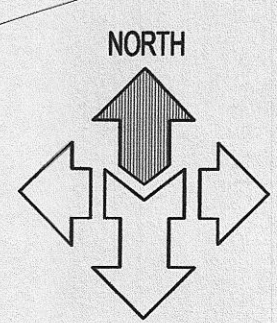
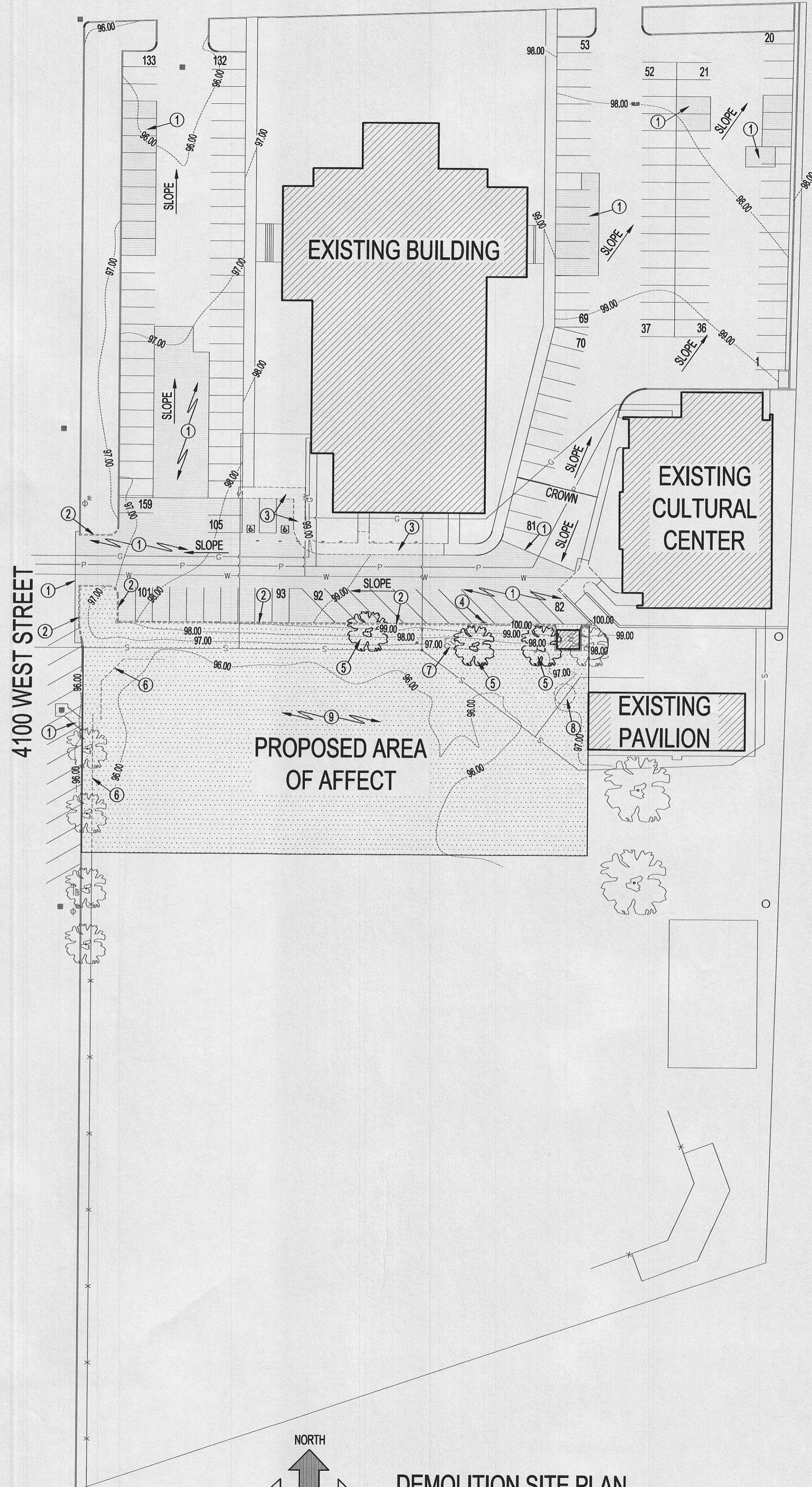


900 SOUTH STREET



**DEMOLITION SITE PLAN**  
SCALE: 1" = 40'-0"

**SCOPE OF WORK:**

- ① SAWCUT AND REMOVE EXISTING ASPHALT AND ROAD BASE 9" BELOW FINISH GRADES. REMOVE ADDITIONAL ASPHALT AND BASE MATERIAL TO DEPTH AS REQUIRED TO CONNECT NEW PIPE IN STREET.
- ② SAWCUT AND REMOVE SECTIONS OF CURB WALL FROM JOINT TO JOINT AS SHOWN ON PLAN AND LEGALLY DISPOSE.
- ③ SAWCUT AND REMOVE SECTIONS OF SIDEWALK FROM JOINT TO JOINT. SAWCUT AND REMOVE SECTION OF CONCRETE RAMP TO PAVILION AREA FROM TO JOINT TO JOINT AS SHOWN ON SITE PLAN. LEGALLY DISPOSE OF ALL MATERIALS ON PROJECT.
- ④ REMOVE AND DISPOSE OF EXISTING BASKETBALL STANDARD.
- ⑤ REMOVE (3) LARGE TREES FROM SOUTH SIDE OF EXISTING PARKING LOT.
- ⑥ REMOVE EXISTING FENCE FROM STREET AND SOFTBALL BACKSTOP FENCING.
- ⑦ REMOVE AND DISPOSE OF EXISTING DRINKING FOUNTAIN AND CONCRETE IN GRASS AREA.
- ⑧ REMOVE EXISTING FLAG POLE AND CONCRETE. PROTECT EXISTING FLAG POLE DURING CONSTRUCTION TO REINSTALL IN NEW CONCRETE AT NEW ELEVATION.
- ⑨ REMOVE SOD, TOPSOIL, SUBGRADE, GRAVEL, IRRIGATION SYSTEM, ETC. FROM AREA OF CONSTRUCTION DOWN 9" BELOW FINISH GRADES. AREAS ALREADY 9" BELOW NEW FINISH GRADE WILL BE CLEARED AND GRUBBED AND HAVE ALL IRRIGATION COMPONENTS REMOVED OR PERMANENTLY CAPPED AND DISCONNECTED FROM EXISTING AND NEW IRRIGATION SYSTEM.

AVOID CUTTING UNDERGROUND UTILITIES. IT'S COSTLY.

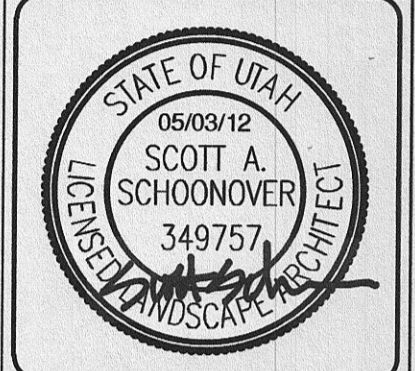
Call  
DJO

1-800-662-4111

NOTICE!  
THE CONTRACTOR SHALL BE RESPONSIBLE FOR THE LOCATION, PROTECTION, AND RESTORATION OF ALL BURIED OR ABOVE GROUND UTILITIES, SHOWN OR NOT SHOWN ON THE PLANS.

MCNEIL GROUP

Designing for the Future Since 1983™  
8610 So. Sandy Parkway, Suite 200 Sandy, Utah 84070  
TEL: (801) 255-7700 FAX: (801) 255-8071  
E-MAIL: info@mcneileng.com WEB SITE: AT: www.mcneil-group.com



WEST WEBER 1, 2, 3, &  
The Church of JESUS CHRIST of Latter-Day Saints

OGDEN UTAH WEBER NORTH STAKE  
4880 WEST 900 SOUTH  
WEST WEBER, UTAH

REV	DATE	DESCRIPTION

PROJECT NO: 11358
CAD DWG. FILE: 11358-site.dwg
DRAWN BY: NMD/MGS
PROPERTY NO: 502-2681
DESIGNED BY: NMD
FIELD CREW: NMD/MGS
CHECKED BY: RJD
DATE: MAY 2012

SHEET TITLE  
DEMOLITION  
SITE  
PLAN

C:\Users\mrisse\OneDrive\Local Items\AcPublish\98A\11358-site.dwg May 03, 2012 - 5:00pm

MCNEIL ENGINEERING - SURVEYING, L.C. MCNEIL ENGINEERING STRUCTURAL, L.C. MCNEIL ASPEN CONSULTANTS, L.C. MCNEIL ENGINEERING - CIVIL, L.C.