

BASEMAP: PLAN TITLED "FOOTPRINT PLAN" SHEET A1.5, PREPARED BY TOM WISCOMBE ARCHITECTRE, DATED APRIL 4, 2018

LOT 44R SUMMIT POWDER MTN.: PERMANENT SOLIDER PILE WALL

APPROXIMATE GRAPHICAL SCALE: 1 INCH = 10 FEET (11X17 ONLY)

PLOT DATE: APR 15, 2018

MARK	REVISIONS	DATE	BY	CHK

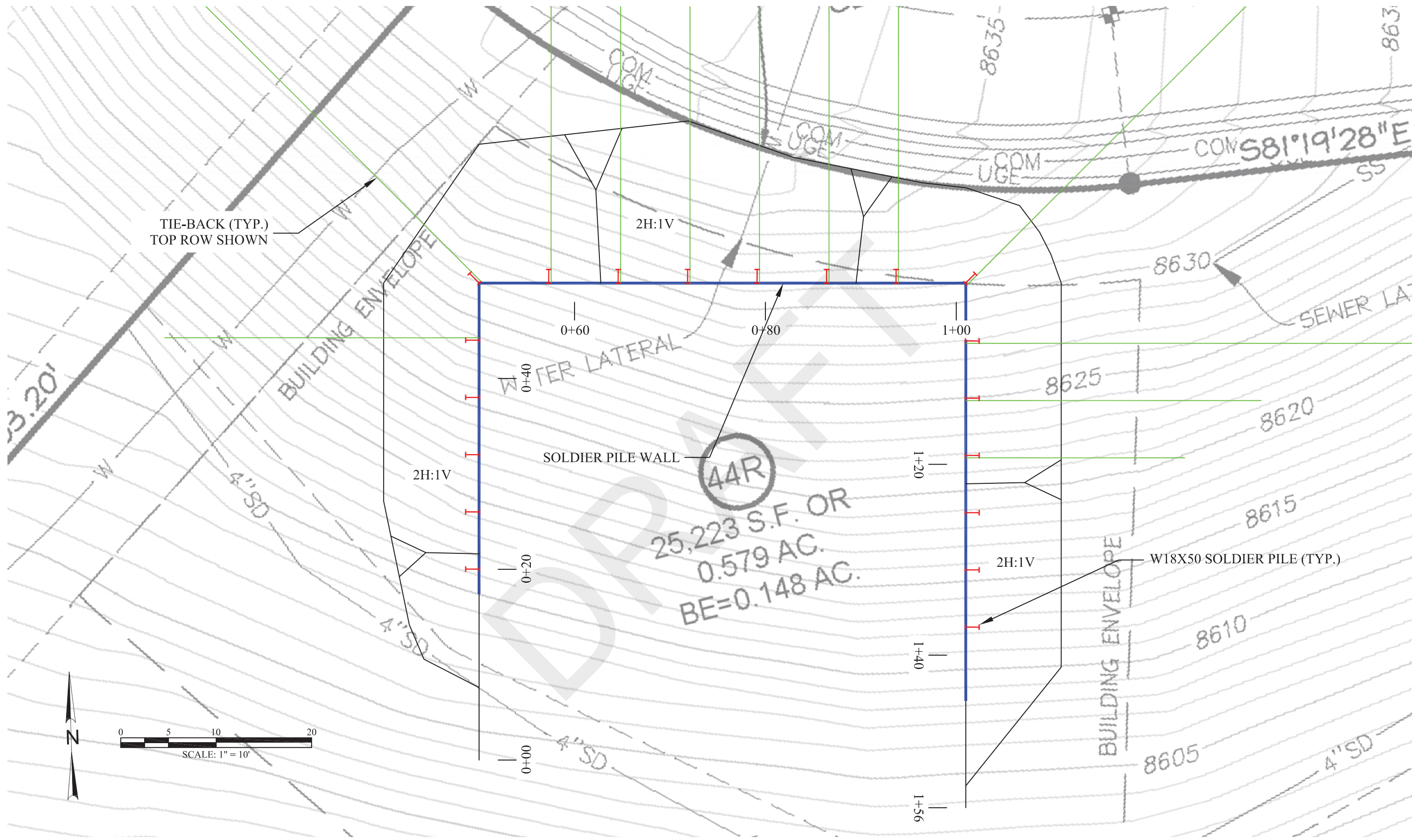


12429 SOUTH 300 EAST, STE. 100
 DRAPER, UTAH 84020
 (801) 748-4044 FAX: (801) 748-4045

PERMANENT SOLDIER PILE WALL DESIGN
 LOT 44R, SUMMIT POWDER MOUNTAIN
 WEBER COUNTY, UTAH

PLAN VIEW

DESIGNED BY: DAG APR 15, 2018	PLOT SCALE
DRAWN BY: DAG APR 15, 2018	1=1
CHECKED BY: DLB APR 15, 2018	DWG SCALE
APPROVED BY: DAG APR 15, 2018	1"=10'
IGES PROJECT NO. 02732-002	SHEET NO. 1.2a
	REV. N/A



BASEMAP: PLAN TITLED "EXISTING CONDITIONS SURVEY" SHEET ET01, PREPARED BY TALISMAN, DATED AUGUST 23, 2017

LOT 44R SUMMIT POWDER MTN.: PERMANENT SOLDIER PILE WALL

APPROXIMATE GRAPHICAL SCALE: 1 INCH = 10 FEET (11X17 ONLY)

PLOT DATE: APR 15, 2018

MARK	REVISIONS	DATE	BY	CHK

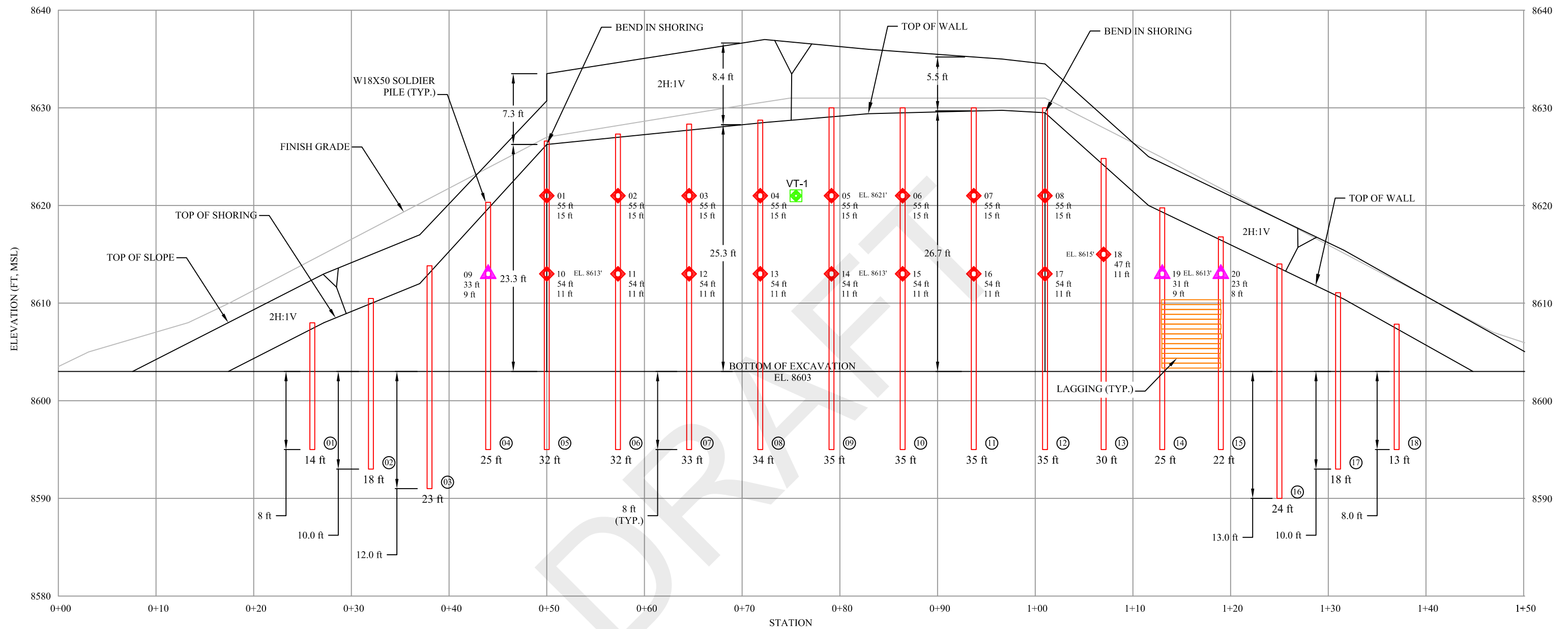


12429 SOUTH 300 EAST, STE. 100
 DRAPER, UTAH 84020
 (801) 748-4044 FAX: (801) 748-4045

PERMANENT SOLDIER PILE WALL DESIGN
 LOT 44R, SUMMIT POWDER MOUNTAIN
 WEBER COUNTY, UTAH

PLAN VIEW

DESIGNED BY: DAG	APR 15, 2018	PLOT SCALE	1=1
DRAWN BY: DAG	APR 15, 2018	DWG SCALE	1"=10'
CHECKED BY: DLB	APR 15, 2018	IGES PROJECT NO.	02732-002
APPROVED BY: DAG	APR 15, 2018	SHEET NO.	1.2b
		REV.	N/A



**PERMANENT SOLDIER PILE WALL
ELEVATION VIEW
SCALE : 1"=10' 11X17 ONLY**

MARK	REVISIONS	DATE	BY	CHK



IGES[®]

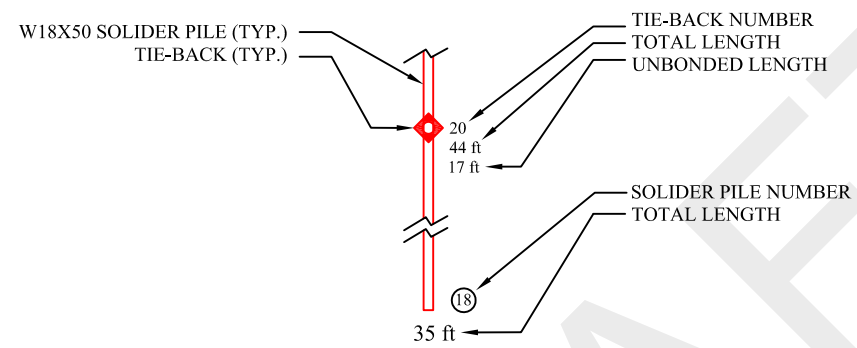
12429 SOUTH 300 EAST, STE. 100
DRAPER, UTAH 84020
(801) 748-4044 FAX: (801) 748-4045




**PERMANENT SOLDIER PILE WALL DESIGN
LOT 44R, SUMMIT POWDER MOUNTAIN
WEBER COUNTY, UTAH
ELEVATION VIEW**

DESIGNED BY: DAG	APR 14, 2018	PLOT SCALE	1=1
DRAWN BY: DAG	APR 14, 2018	DWG SCALE	1"=10'
CHECKED BY: DLB	APR 14, 2018		
APPROVED BY: DAG	APR 14, 2018		
IGES PROJECT NO. 02732-002	SHEET NO. 1.3a	REV.	N/A

PLOT DATE: APR 14, 2018

LEGEND



-  VT-1 VERIFICATION TEST LOCATION (TYP.)
-  3-STRAND TIE-BACK (OR #14 GRADE 75)
-  2-STRAND TIE-BACK (OR #11 GRADE 75)

DRAFT

PLOT DATE: APR 14, 2018

MARK	REVISIONS	DATE	BY	CHK

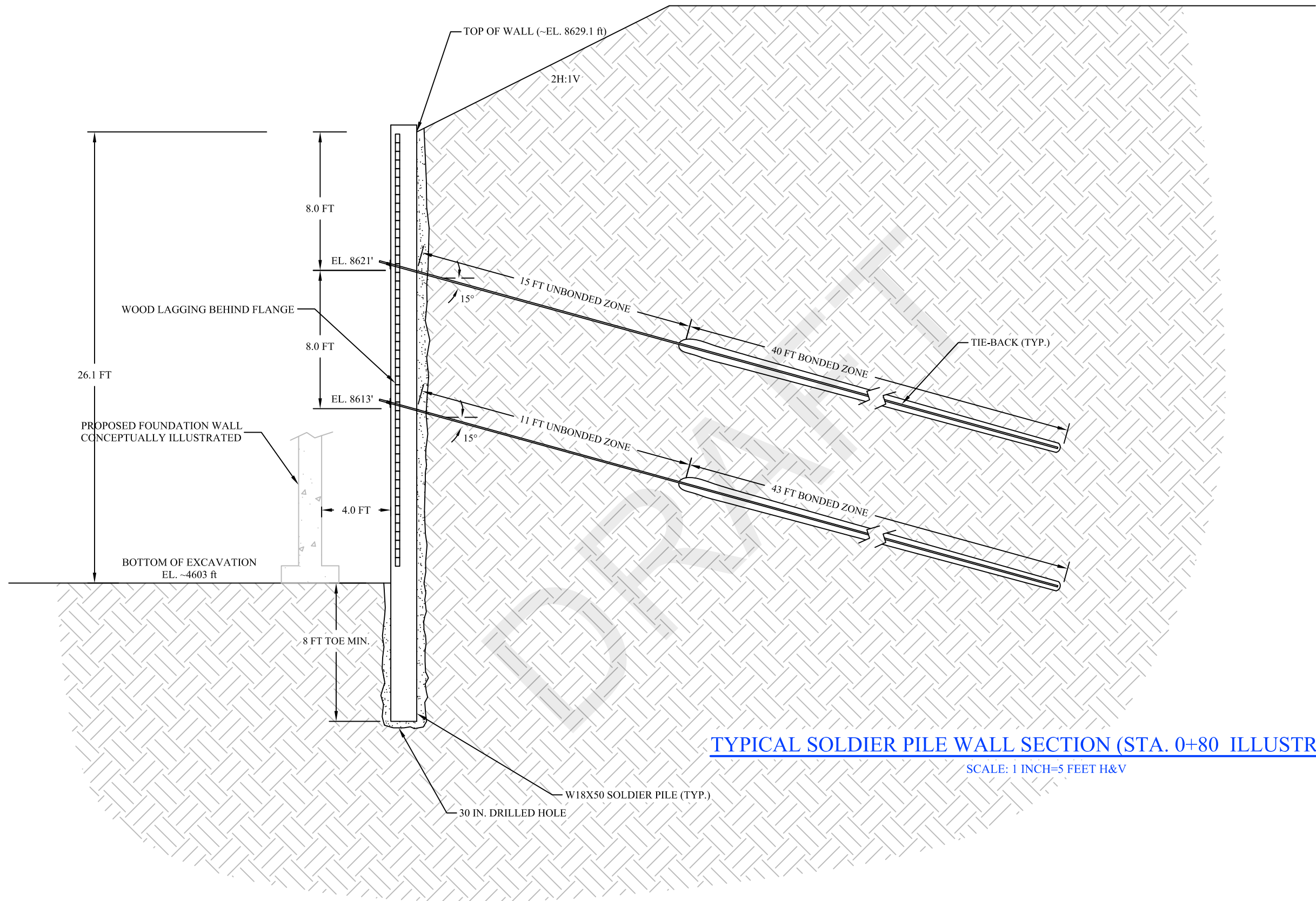


IGES[®]

12429 SOUTH 300 EAST, STE. 100
 DRAPER, UTAH 84020
 (801) 748-4044 FAX: (801) 748-4045

PERMANENT SOLDIER PILE WALL DESIGN
 LOT 44R, SUMMIT POWDER MOUNTAIN
 WEBER COUNTY, UTAH
ELEVATION VIEW LEGEND

DESIGNED BY: DAG	APR 14, 2018	PLOT SCALE
DRAWN BY: DAG	APR 14, 2018	1=1
CHECKED BY: DLB	APR 14, 2018	DWG SCALE
APPROVED BY: DAG	APR 14, 2018	1"=10'
IGES PROJECT NO.	SHEET NO.	REV.
02732-002	1.3b	N/A



TYPICAL SOLDIER PILE WALL SECTION (STA. 0+80 ILLUSTRATED)

SCALE: 1 INCH=5 FEET H&V

MARK	REVISIONS	DATE	BY	CHK

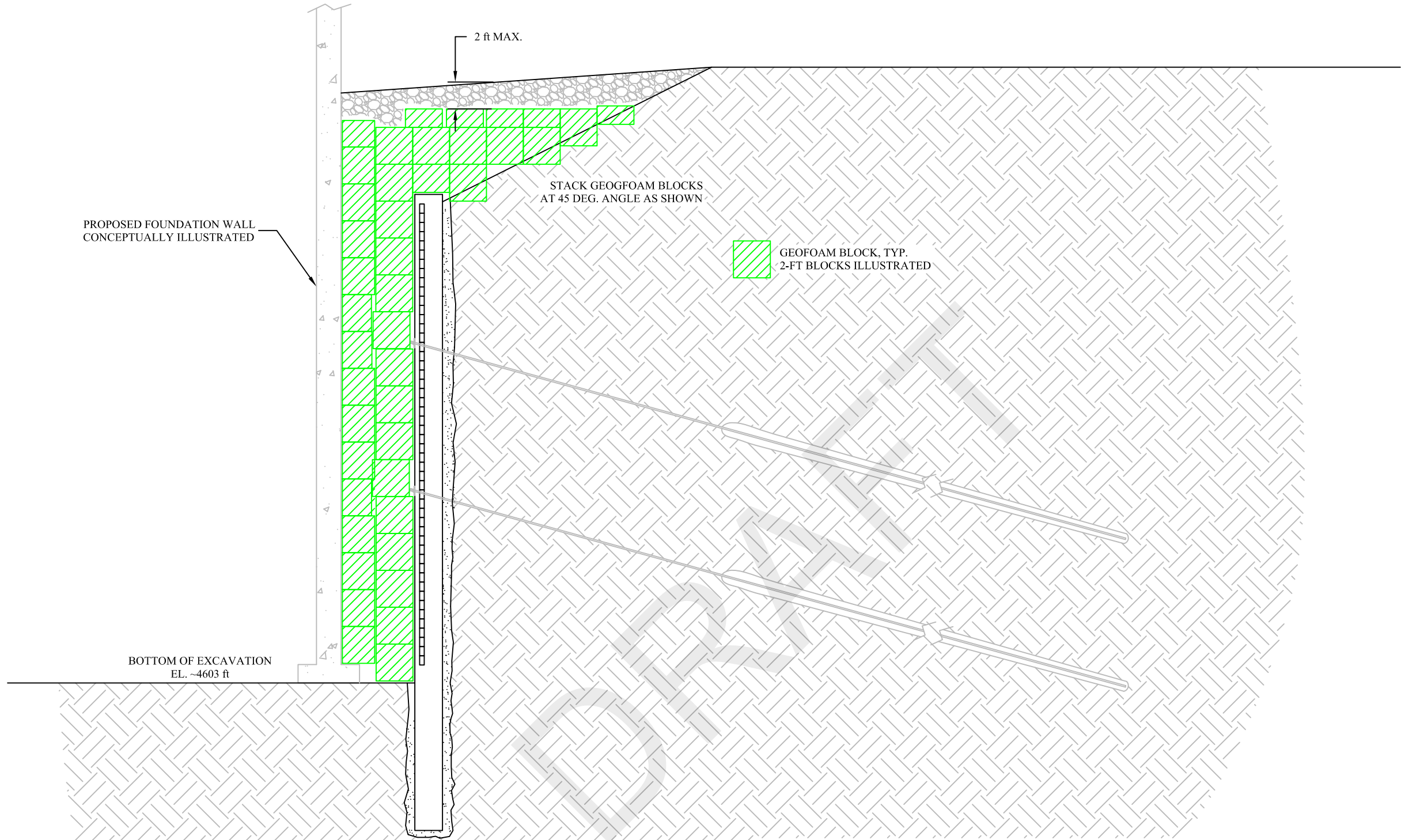


12429 SOUTH 300 EAST, STE. 100
 DRAPER, UTAH 84020
 (801) 748-4044 FAX: (801) 748-4045

PERMANENT SOLDIER PILE WALL DESIGN
 LOT 44R, SUMMIT POWDER MOUNTAIN
 WEBER COUNTY, UTAH
 TYPICAL SECTION VIEW

DESIGNED BY: DAG	APR 14, 2018	PLOT SCALE	1=1
DRAWN BY: DAG	APR 14, 2018	DWG SCALE	1"-6'
CHECKED BY: DLB	APR 14, 2018	IGES PROJECT NO.	02732-002
APPROVED BY: DAG	APR 14, 2018	SHEET NO.	1.4a
		REV.	N/A

PLOT DATE: APR 14, 2018



PROPOSED FOUNDATION WALL
CONCEPTUALLY ILLUSTRATED

2 ft MAX.

STACK GEOFOAM BLOCKS
AT 45 DEG. ANGLE AS SHOWN

GEOFOAM BLOCK, TYP.
2-FT BLOCKS ILLUSTRATED

BOTTOM OF EXCAVATION
EL. ~4603 ft

TYPICAL SOLDIER PILE WALL SECTION (STA. 0+80 ILLUSTRATED)

SCALE: 1 INCH=5 FEET H&V

MARK	REVISIONS	DATE	BY	CHK



12429 SOUTH 300 EAST, STE. 100
DRAPER, UTAH 84020
(801) 748-4044 FAX: (801) 748-4045

PERMANENT SOLDIER PILE WALL DESIGN
LOT 44R, SUMMIT POWDER MOUNTAIN
WEBER COUNTY, UTAH
TYPICAL SECTION VIEW

DESIGNED BY: DAG	APR 14, 2018	PLOT SCALE	1=1
DRAWN BY: DAG	APR 14, 2018	DWG SCALE	1"-6'
CHECKED BY: DLB	APR 14, 2018	IGES PROJECT NO.	02732-002
APPROVED BY: DAG	APR 14, 2018	SHEET NO.	1.4b
		REV.	N/A

PLOT DATE: APR 14, 2018