

REVISIONS:
 DATE: 12-03-11
 PROJECT: 12-031
 DRAWN BY: C.D.
 PLOT: 06-07-2012

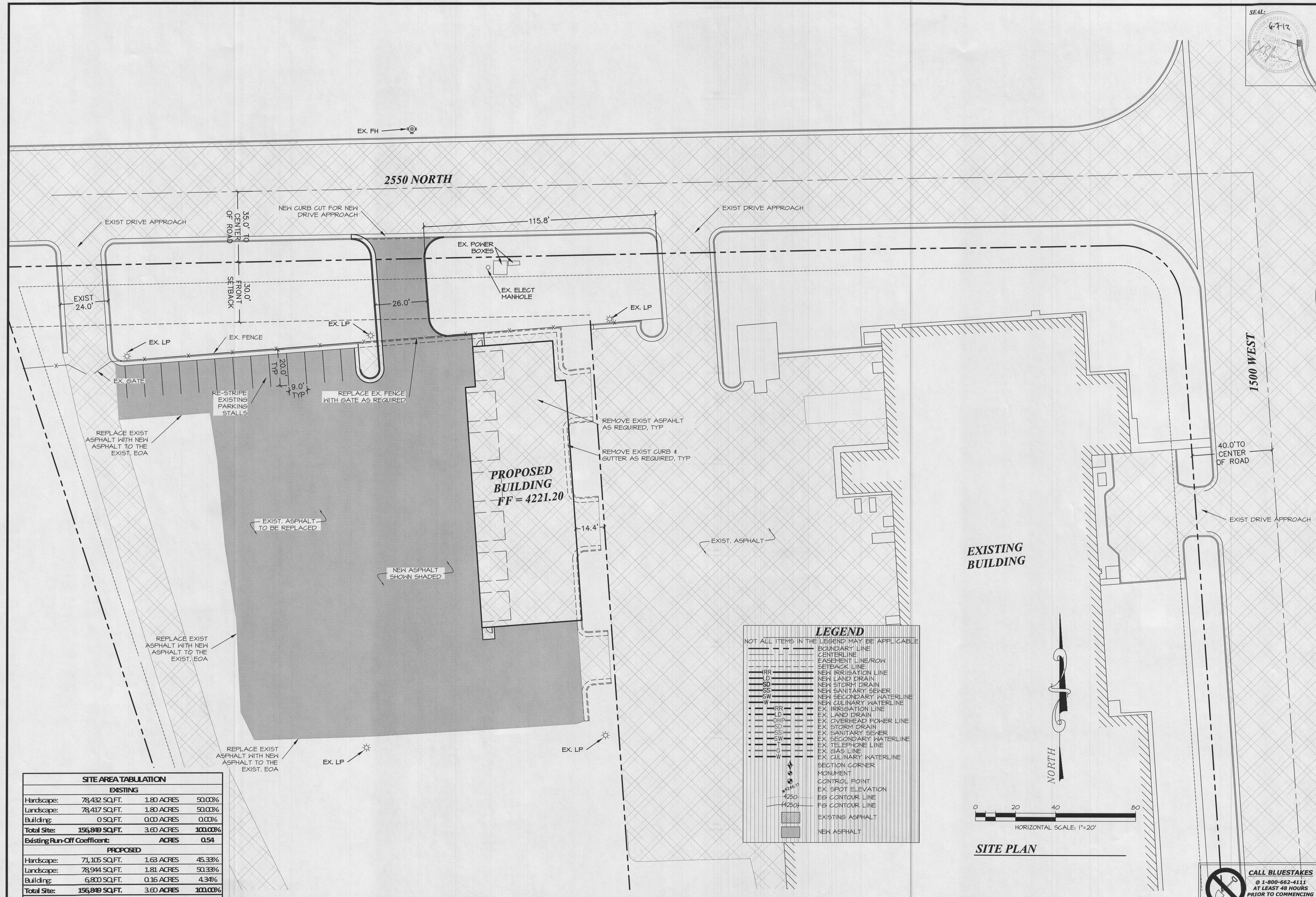
DRAWING DESCRIPTION:
 SITE PLAN

177 E. ANTELOPE DR. #B
 LAYTON, UT 84041
 PHONE: (801) 499-5054
 FAX: (801) 499-5065

SILVERPEAK
 ENGINEERING

BAUR STORAGE BUILDING
 LOT 1B, WEBER INDUSTRIAL PARK
 WEBER COUNTY, UTAH

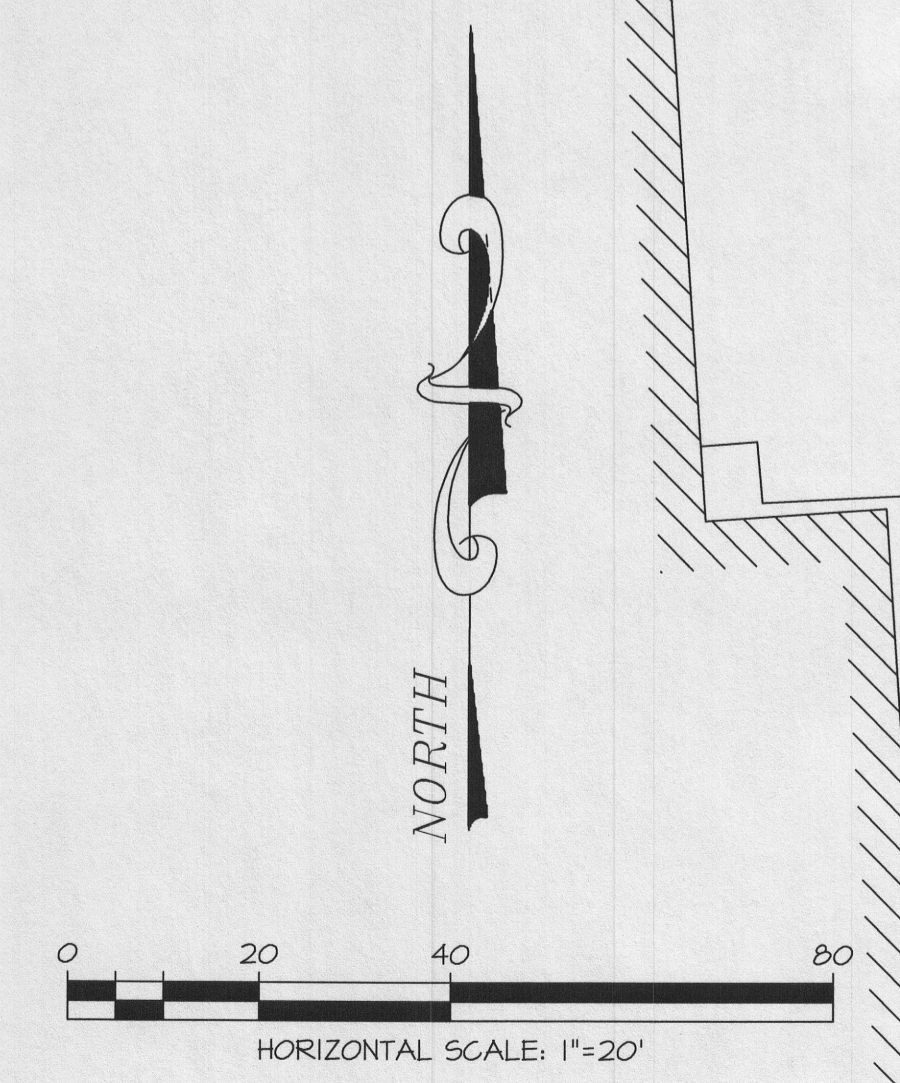
SHEET NUMBER:
C3



SITE AREA TABULATION			
EXISTING			
Hardscape:	78,432 SQ.FT.	1.80 ACRES	50.00%
Landscape:	78,417 SQ.FT.	1.80 ACRES	50.00%
Building:	0 SQ.FT.	0.00 ACRES	0.00%
Total Site:	156,849 SQ.FT.	3.60 ACRES	100.00%
Existing Run-Off Coefficient:	ACRES	0.54	
PROPOSED			
Hardscape:	71,105 SQ.FT.	1.63 ACRES	45.33%
Landscape:	78,944 SQ.FT.	1.81 ACRES	50.33%
Building:	6,800 SQ.FT.	0.16 ACRES	4.34%
Total Site:	156,849 SQ.FT.	3.60 ACRES	100.00%
Proposed Run-Off Coefficient:	ACRES	0.53	

LEGEND
 NOT ALL ITEMS IN THE LEGEND MAY BE APPLICABLE

---	BOUNDARY LINE
---	CENTERLINE
---	EASEMENT LINE/ROW
---	SETBACK LINE
---	NEW IRRIGATION LINE
---	NEW LAND DRAIN
---	NEW STORM DRAIN
---	NEW SANITARY SEWER
---	NEW SECONDARY WATERLINE
---	NEW CULINARY WATERLINE
---	EX IRRIGATION LINE
---	EX LAND DRAIN
---	EX OVERHEAD POWER LINE
---	EX STORM DRAIN
---	EX SANITARY SEWER
---	EX SECONDARY WATERLINE
---	EX CULINARY WATERLINE
---	EX TELEPHONE LINE
---	EX GAS LINE
---	EX CULINARY WATERLINE
---	SECTION CORNER
---	MONUMENT
---	CONTROL POINT
---	EX SPOT ELEVATION
---	EG CONTOUR LINE
---	FG CONTOUR LINE
---	EXISTING ASPHALT
---	NEW ASPHALT



SITE PLAN

CALL BLUESTAKES
 @ 1-800-662-4111
 AT LEAST 48 HOURS
 PRIOR TO COMMENCING
 ANY CONSTRUCTION