

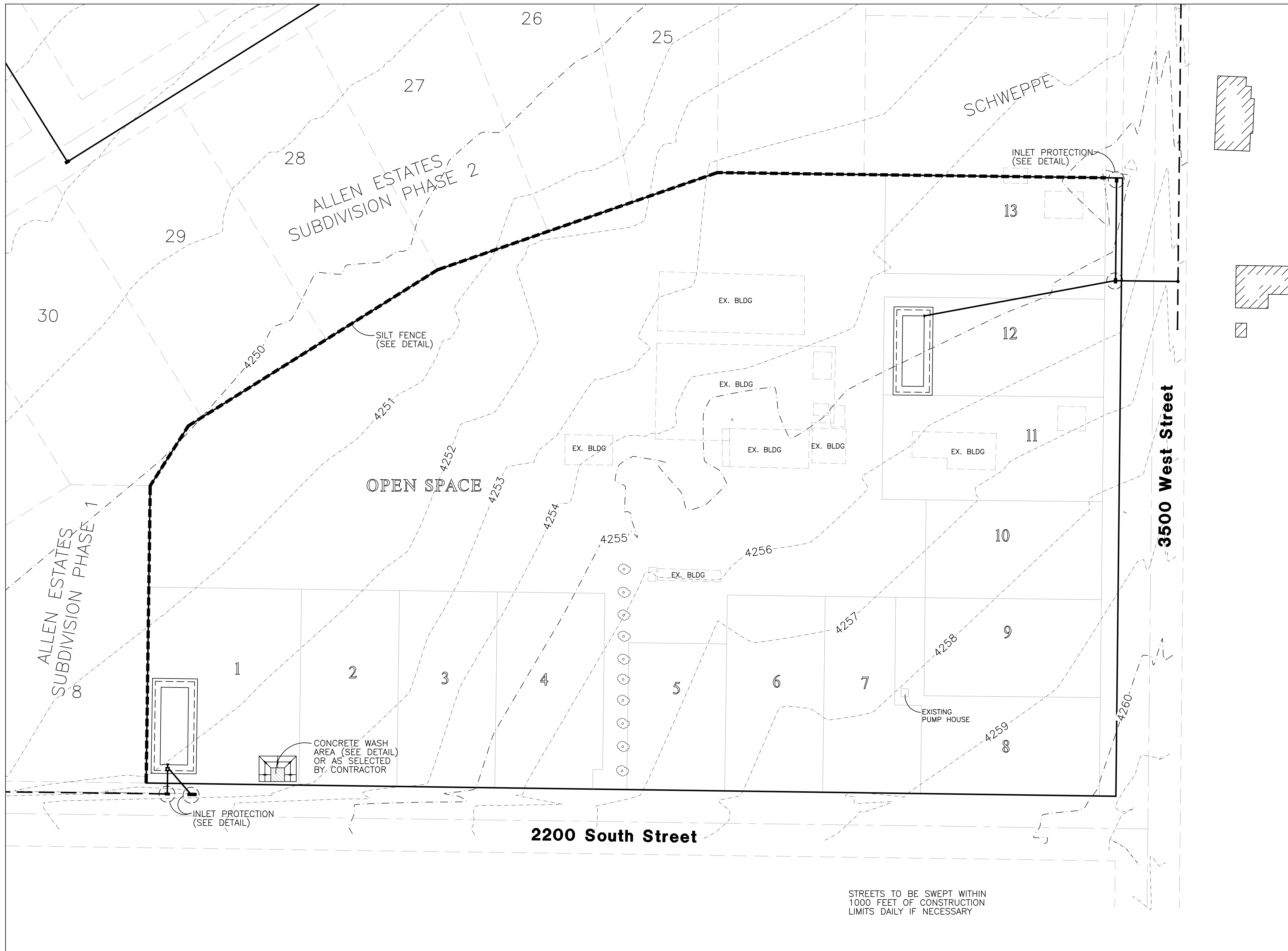
Allen Horseplay Cluster Subdivision

Storm Water Pollution Prevention Plan Exhibit

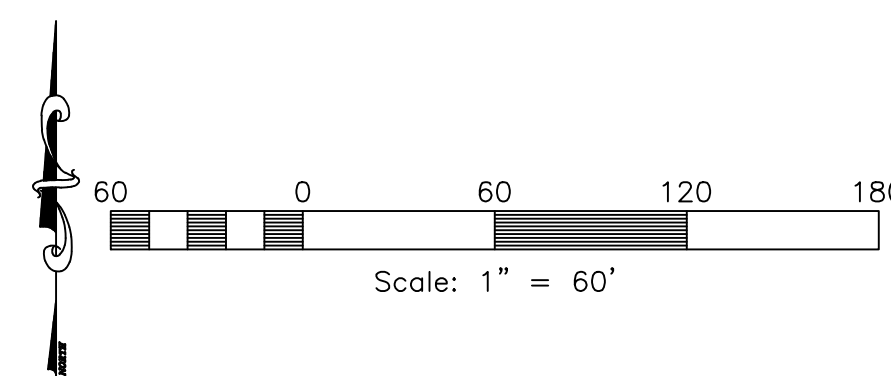
WEBER COUNTY, UTAH
AUGUST, 2012



Vicinity Map
NOT TO SCALE



STREETS TO BE SWEEP WITHIN
1000 FEET OF CONSTRUCTION
LIMITS DAILY IF NECESSARY



Construction Activity Schedule

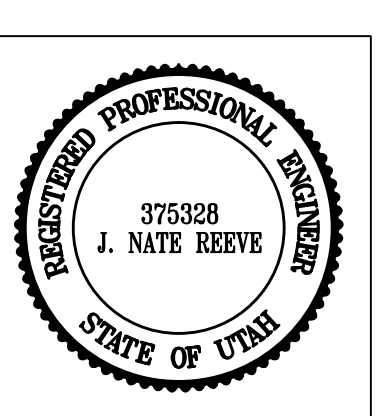
- PROJECT LOCATION.....WEBER COUNTY, UTAH
- PROJECT BEGINNING DATE.....AUGUST 2012
- BMP'S DEPLOYMENT DATE.....AUGUST 2012
- STORM WATER MANAGEMENT CONTACT / INSPECTOR.....VAUGHN ALLEN (801) 391-3880
- SPECIFIC CONSTRUCTION SCHEDULE INCLUDING BMP CONSTRUCTION SCHEDULE TO BE INCLUDED WITH SWPPP BY OWNER/DEVELOPER

Reeve & Associates, Inc.
920 CHAMBERS STREET, SUITE #14, OGDEN, UTAH 84403
TEL: (801) 621-2100 FAX: (801) 621-2666 www.reeve-assoc.com
LAND PLANNERS • CIVIL ENGINEERS • LAND SURVEYORS
TRAFFIC ENGINEERS • STRUCTURAL ENGINEERS • LANDSCAPE ARCHITECTS

REVISIONS	DESCRIPTION

Allen Horseplay Cluster Subdivision
WEBER COUNTY, UTAH

Storm Water Pollution Prevention Plan Exhibit



Project Info.

Engineer: J. NATE REEVE, P.E.
 Drafter: R. HANSEN
 Begin Date: AUGUST 10, 2012
 Name: ALLEN HORSEPLAY CLUSTER SUBDIVISION
 Number: 5125-02

Sheet	10
9	Sheets