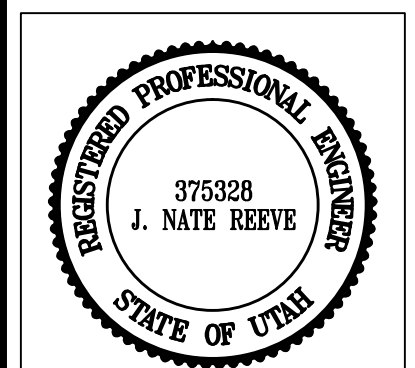


REVISIONS	DESCRIPTION

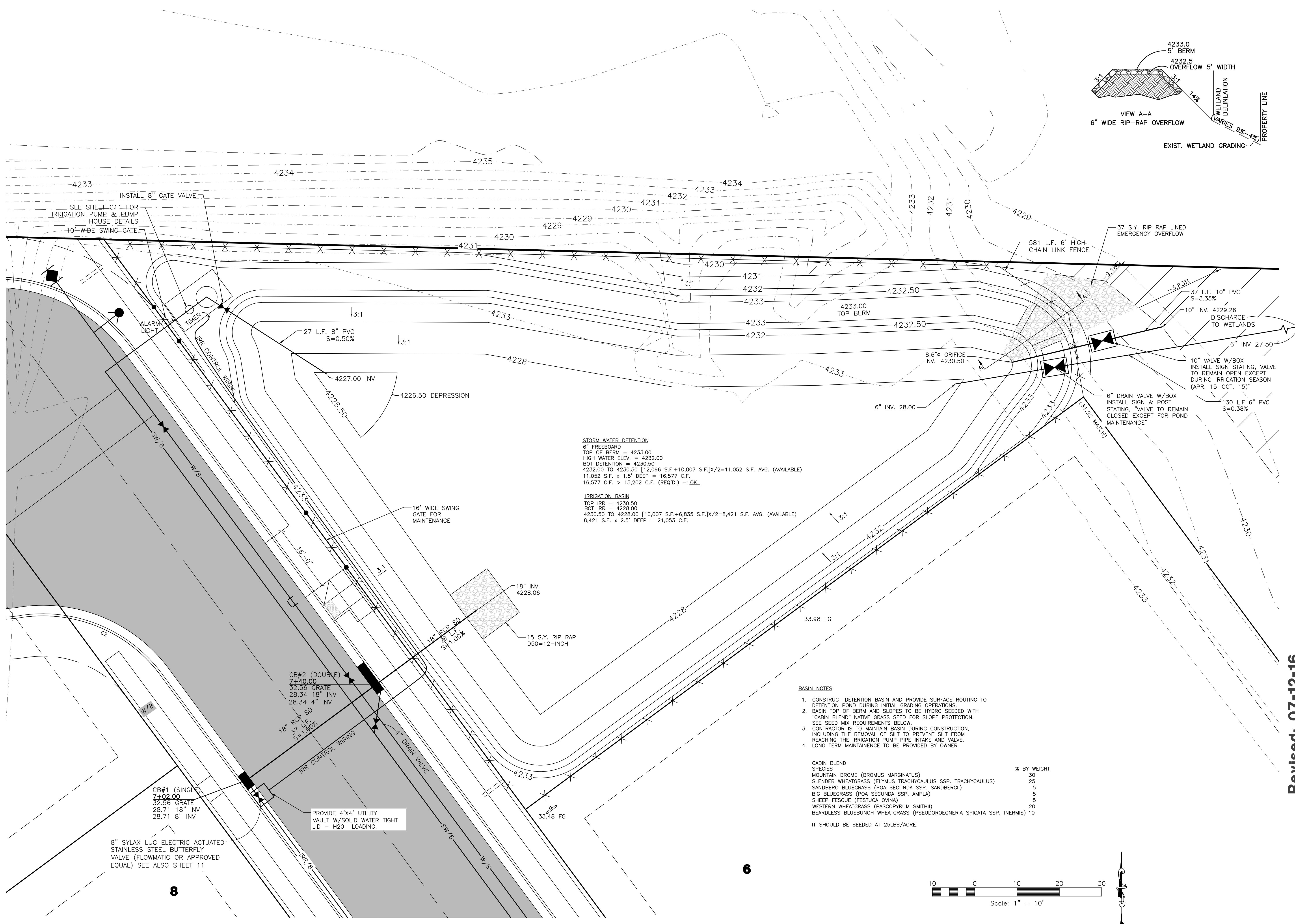
Henry Flats Cluster Subdivision
WEST WEBER CITY, WEBER COUNTY, UTAH

Detention Basin Grading Plan



Project Info.
Engineer: J. NATE REEVE
Drafted: C. KINGSLEY
Begin Date: NOVEMBER, 2015
Name: HENRY FLATS CLUSTER SUBDIVISION
Number: 6272-01

Sheet **12**
11 Sheets



Revised: 07-12-16