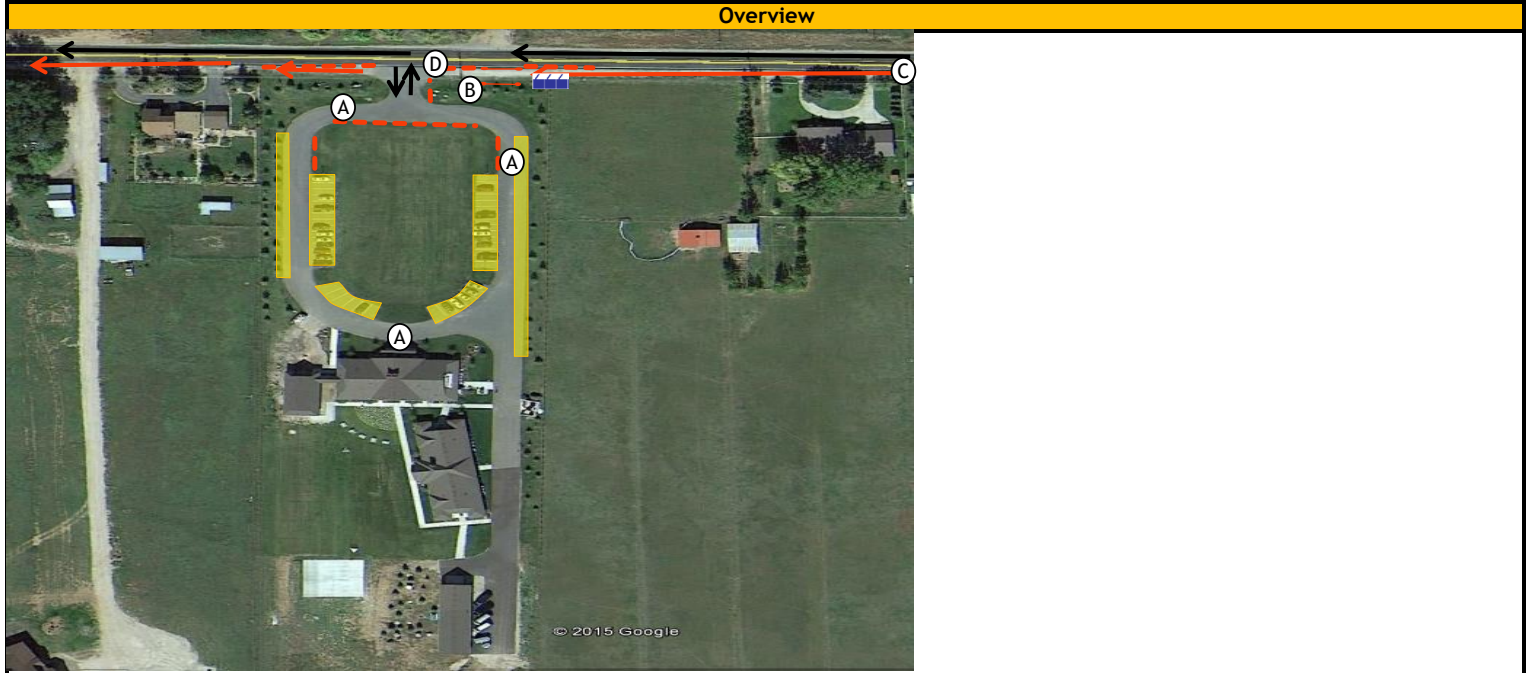


EX 10	School	Location: Waypoint Academy 9091 E 100 S, Huntsville, UT 84317	Contact:	Night Time Hours 7:45 PM - 6:30 AM
Max Parking Space	70	Key: 		
Peak Parking Needs	55			
Peak Time	4:21 PM			
Volunteer Shift Time				
Shift	Start	End		
Shift 1	12:45 PM	5:30 PM		
Shift 2	5:00 PM	9:30 PM		
Shift 3				



Overview Notes	
CHUTE PLACEMENT	Place Chute directly across from church. Create a lane for runner to stand in, keeping them from overflowing onto street. Leave opening for incoming and outgoing runner to cross
PARKING INSTRUCTIONS	Parking up near church, on asphalt and gravel. No parking on the grass
TRAFFIC CONCERNS	This is a high speed road. Regular traffic should not be impeded at all by race activities
VAN/RUNNER FLOW	Runners should be held so that vans can turn in and out of the parking lot with ease
PORT-A-POTTIE PLACEMENT	Toilets should face the road but have coning in front to curb the line
PRIVATE PROPERTY CONCERNS	This a boarding school, runners should be kept out of the school and behind at all costs
OTHER DETAIL NOTES	Exchange Bin, Binder, and cones on site should be cleaned up and stacked by Portable toilets for Course Set Up to pick up once the exchange has closed

Volunteer Duties		
A	Manage parking flow, when slow, manage toilets & clean up exchange	3
B	Manage Chute, cross team off team list	1
C	Radioing incoming runner to volunteer at chute	1
D	Hold runners until traffic is clear	1
		6