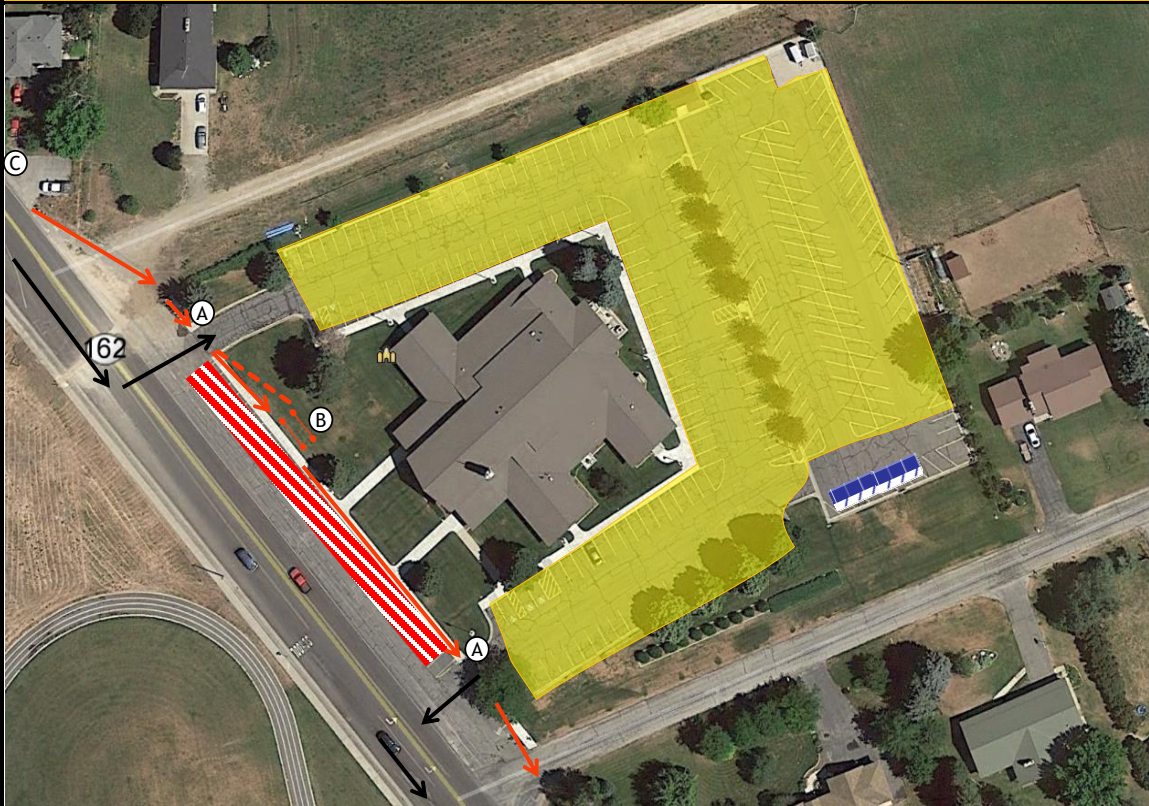


Exchange 7	Church	Location: LDS Church	Venue Contact:	Night Time Hours
Venue:		2900 North HWY 162, Eden, UT 84310		7:45 PM - 6:30 AM
Max Parking Space	236	Volunteer Shift Time	Key:	Toilets
Peak Parking Needs	50	Shift Start End	Chute	Volunteer
Peak Time	12:14 PM	Shift 1 10:45 AM 3:45 PM	Van's Path	Parking
		Shift 2 3:15 PM 8:15 PM	Runner's Path	No Parking
		Shift 3		

Overview



Overview Notes

CHUTE PLACEMENT	In Grass, pull away from the sidewalk, but maintain a line of site for the runner
PARKING INSTRUCTIONS	Use parking lot, do not park in front of the church
TRAFFIC CONCERNS	
VAN/RUNNER FLOW	Make sure outgoing runners stop for van traffic before crossing van path. Use Volunteer A to stop runner.
PORT-A-POTTIE PLACEMENT	Place as indicated on layout. Church has approved.
PRIVATE PROPERTY CONCERNS	
OTHER DETAIL NOTES	Exchange Bin, Binder, and cones on site should be cleaned up and stacked by Portable toilets for Course Set Up to pick up once the exchange has closed

Volunteer Duties

A	Manage Runners to keep from crossing outgoing van, assist in parking flow, when slow, manage toilets & clean up exchange	2
B	Manage Chute, cross team off team list	1
C	Radioing incoming runner to volunteer at chute	1
		4